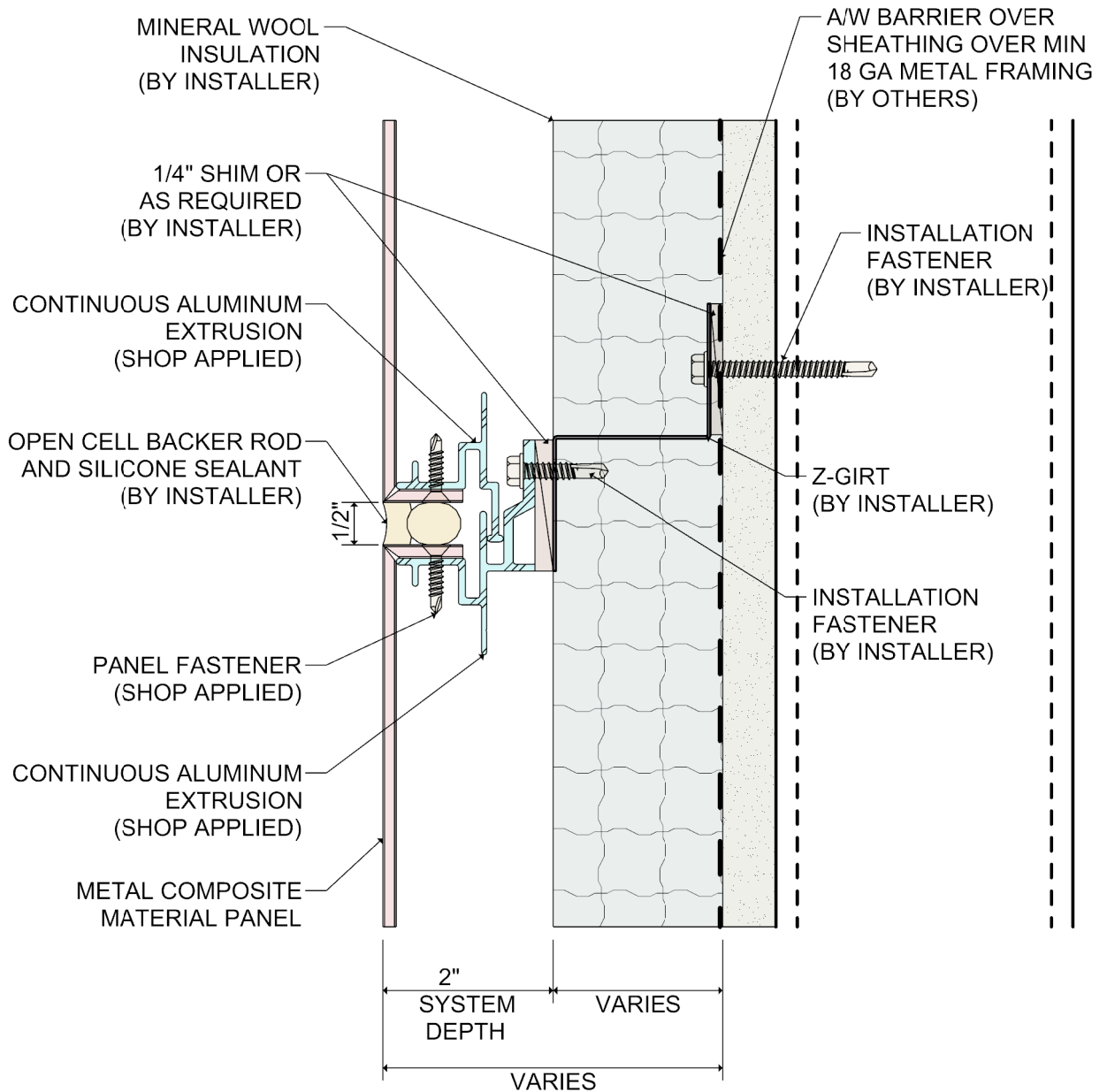
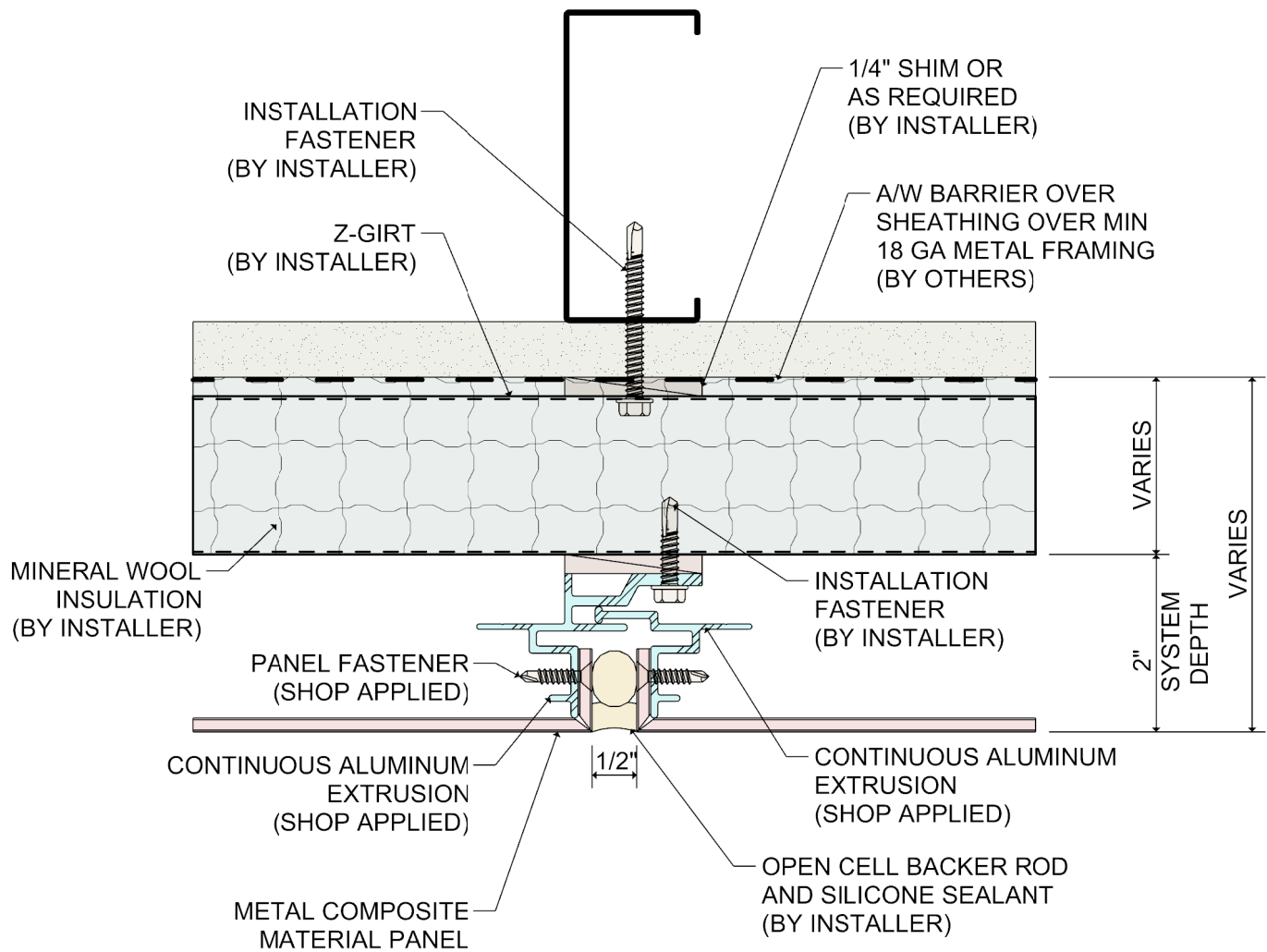


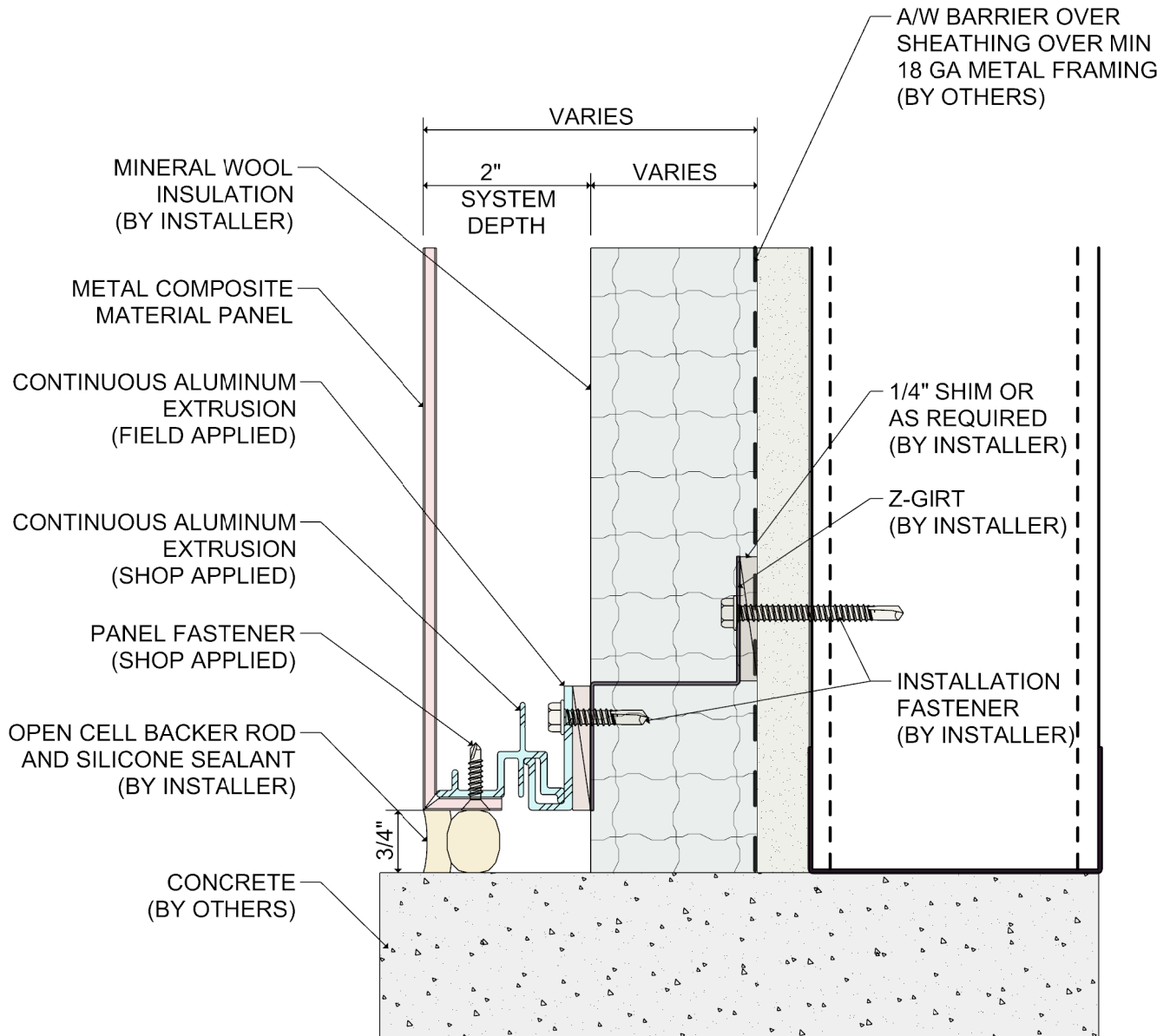


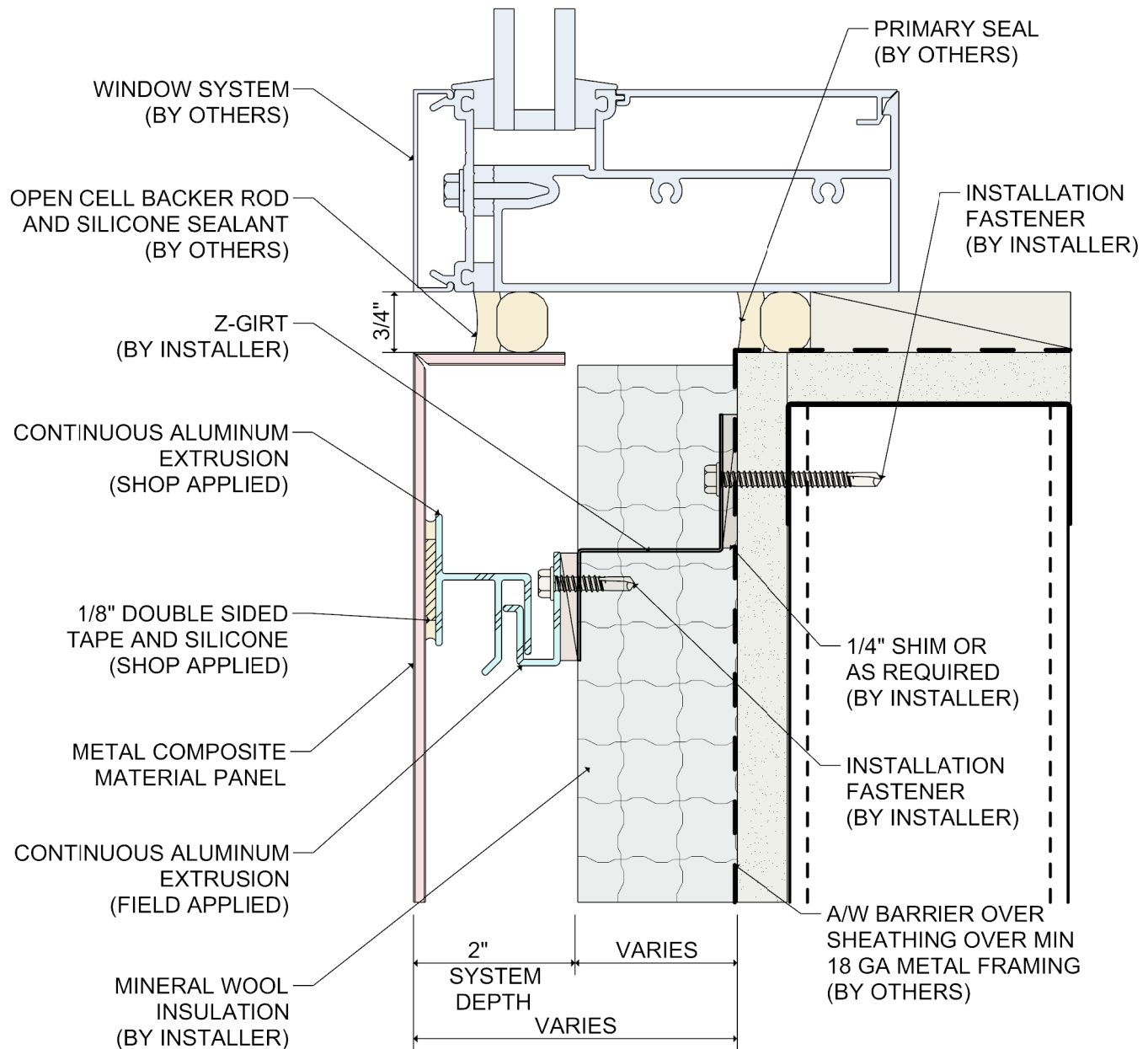
System 1100 Wet Seal Attachment System Details with Mineral Wool Insulation

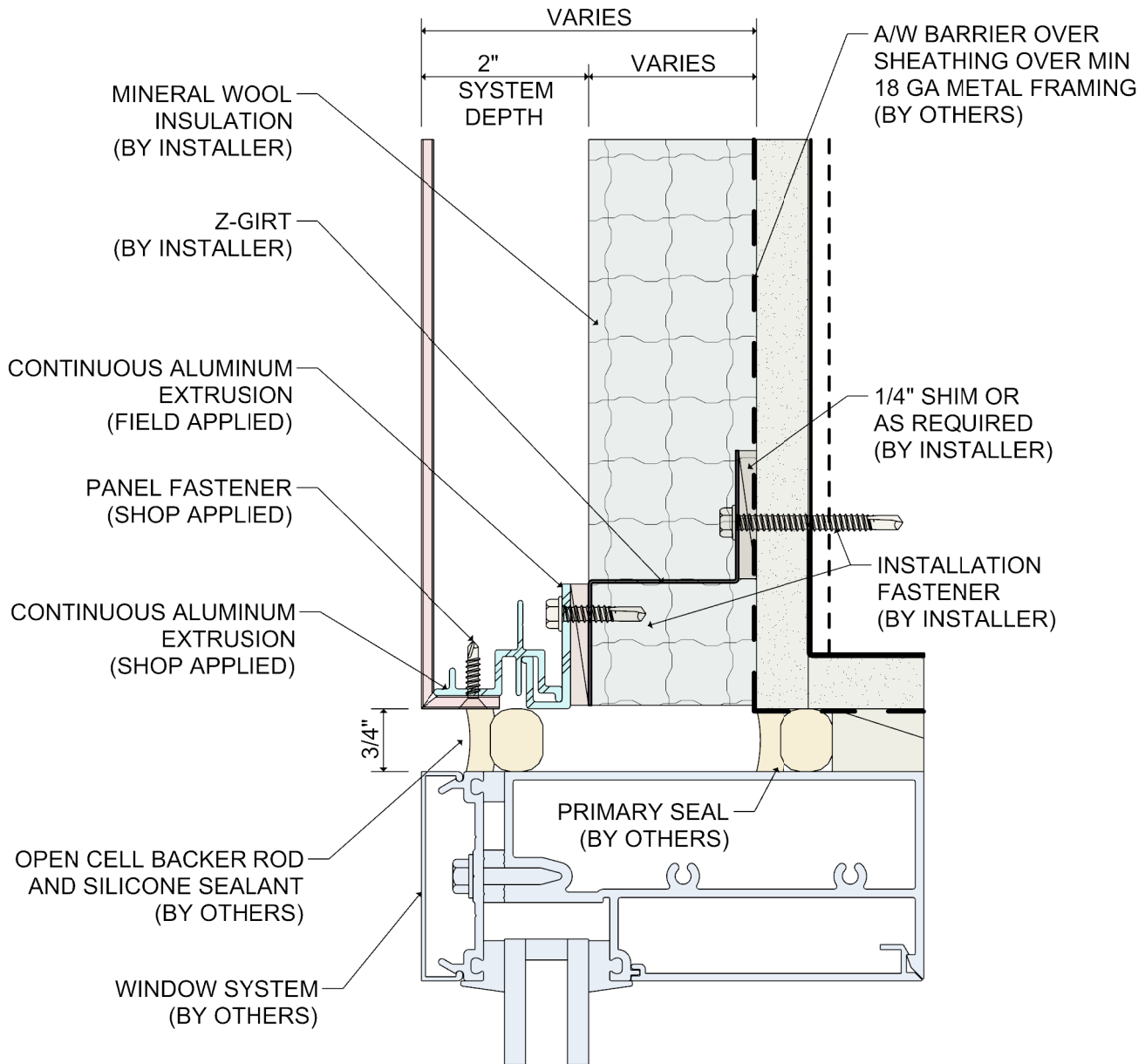
Revised 11/2020

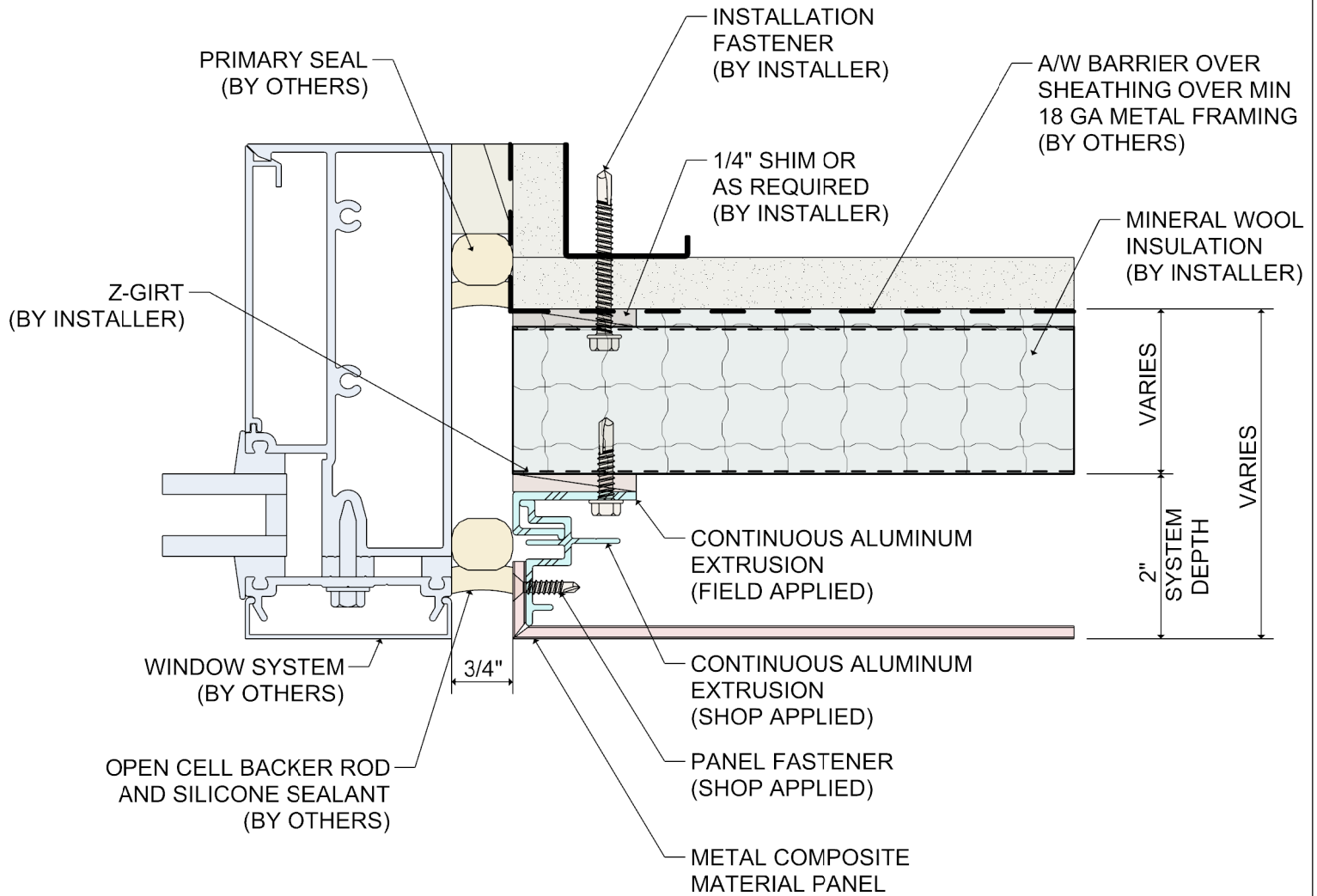


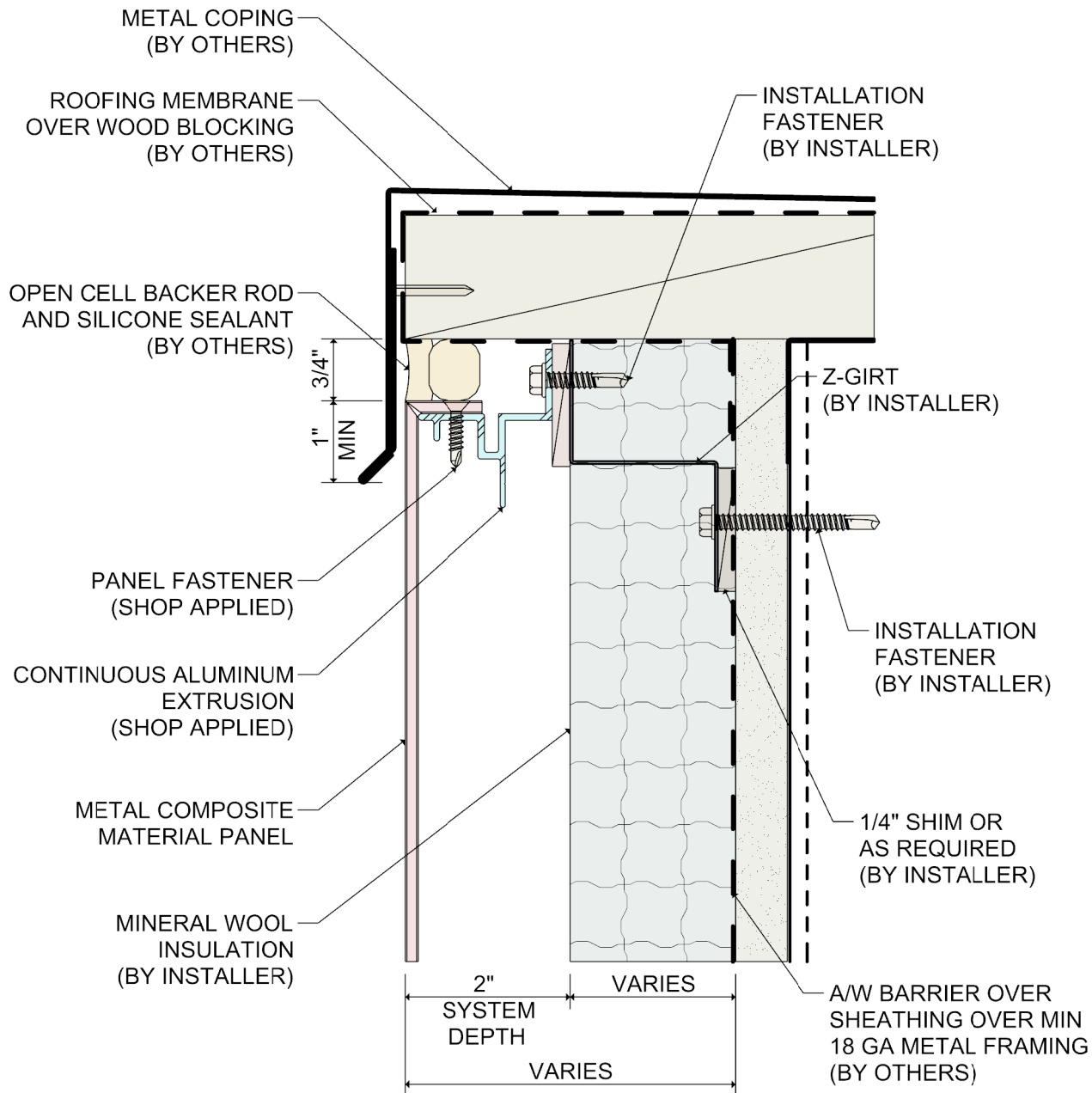


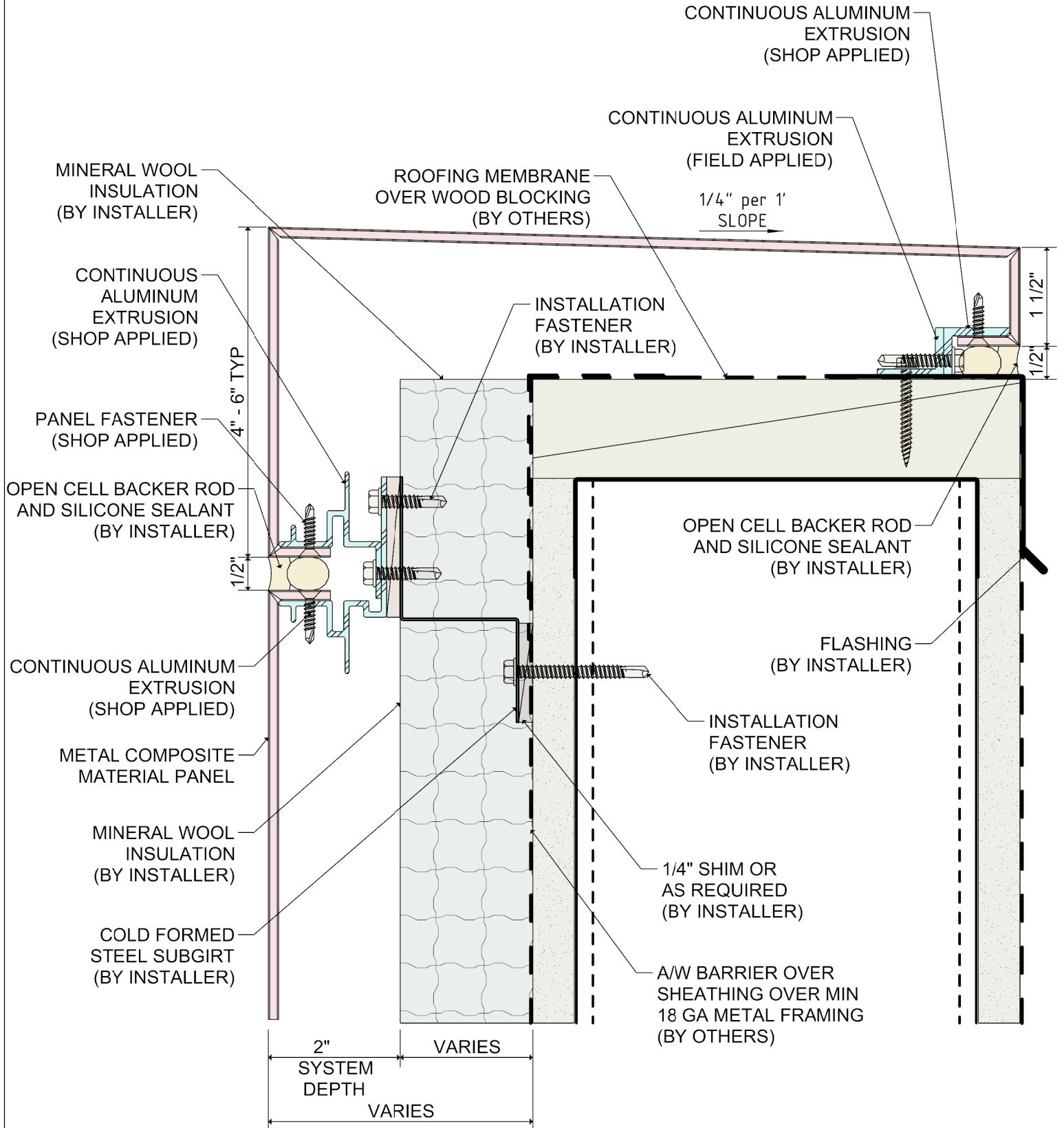


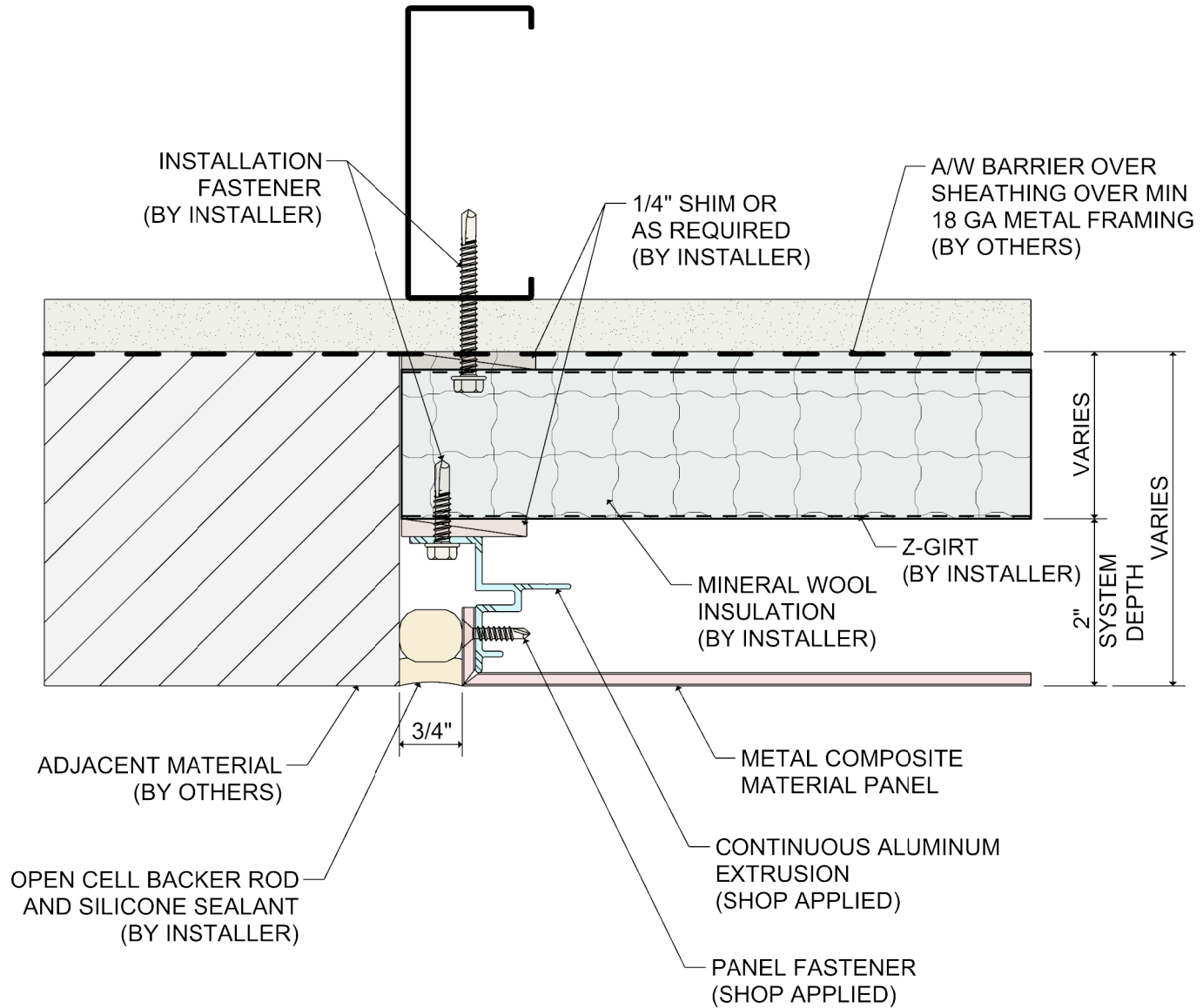


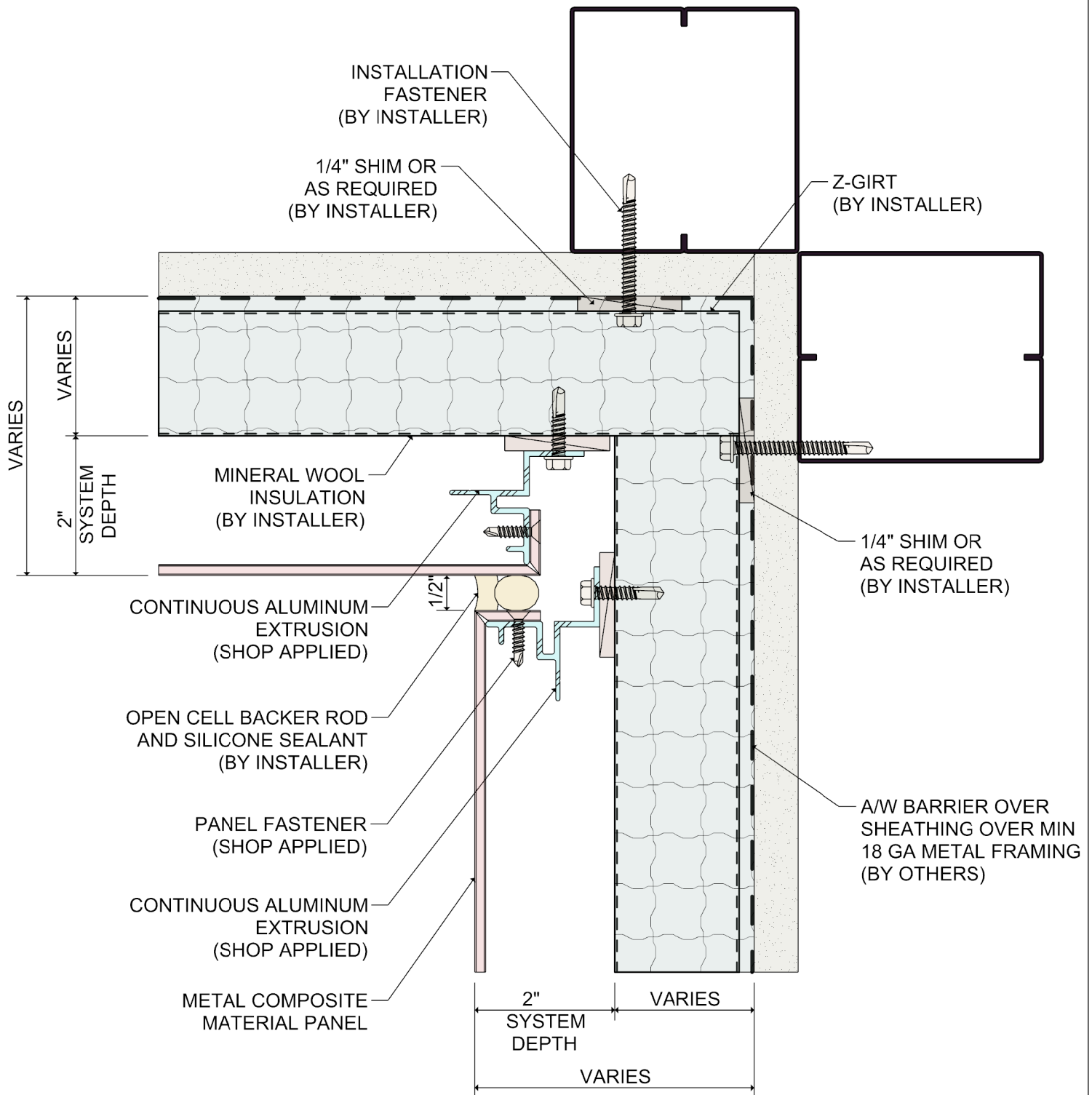


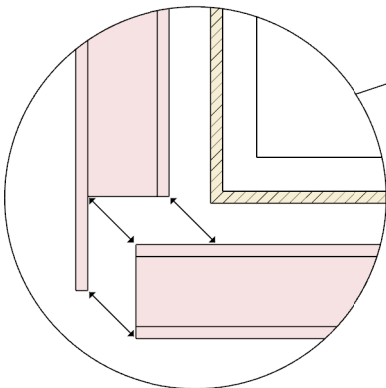
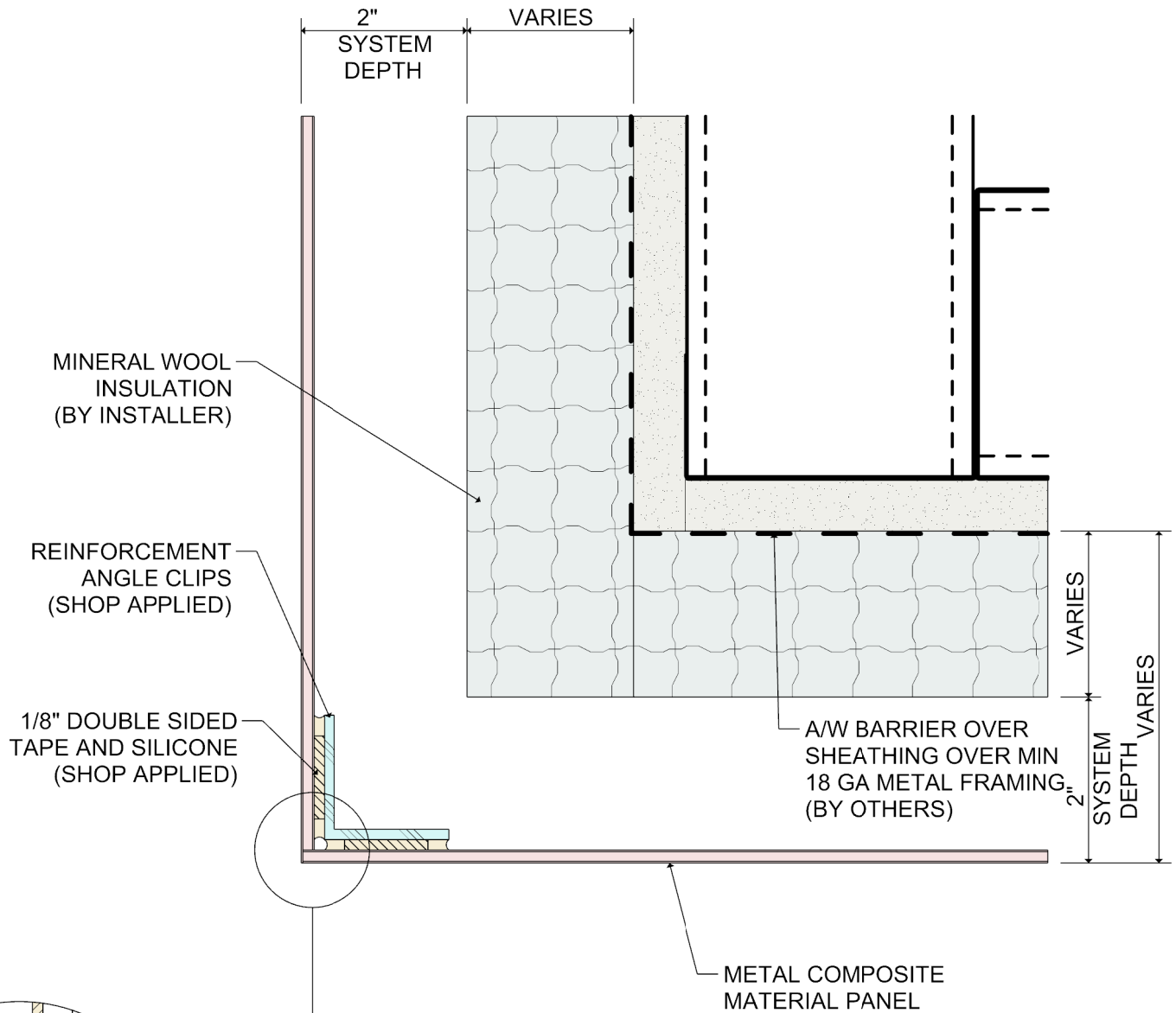


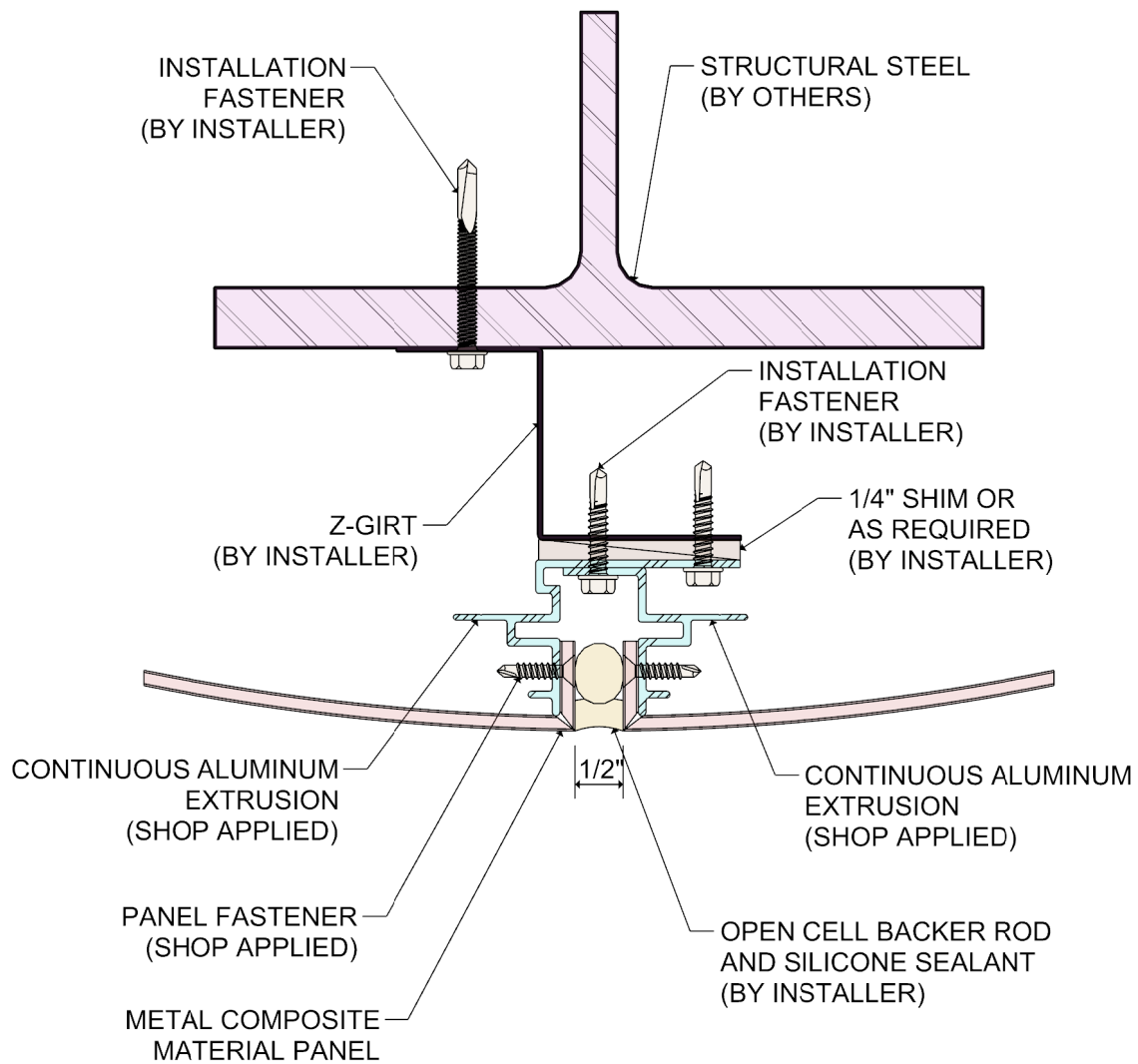


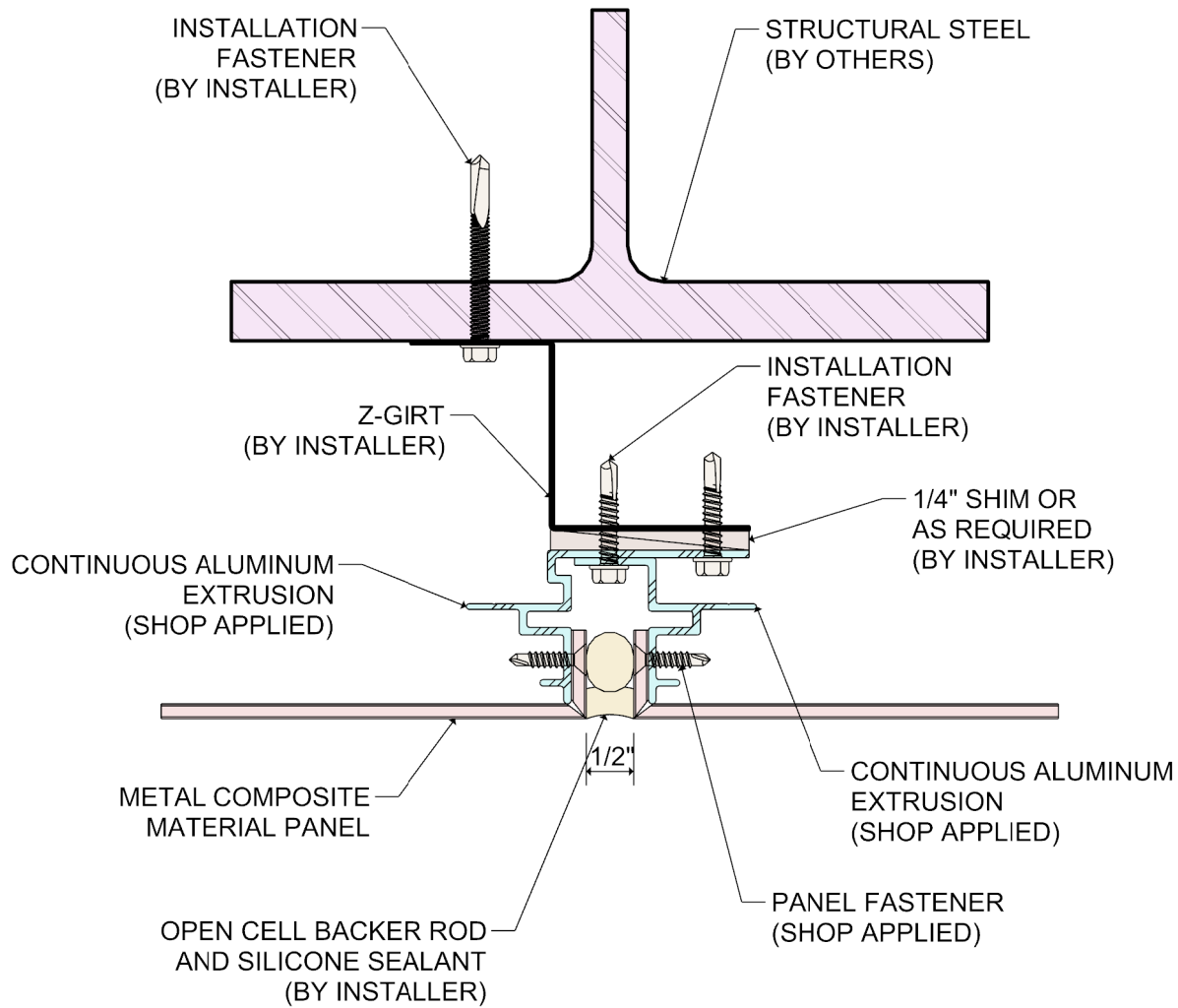


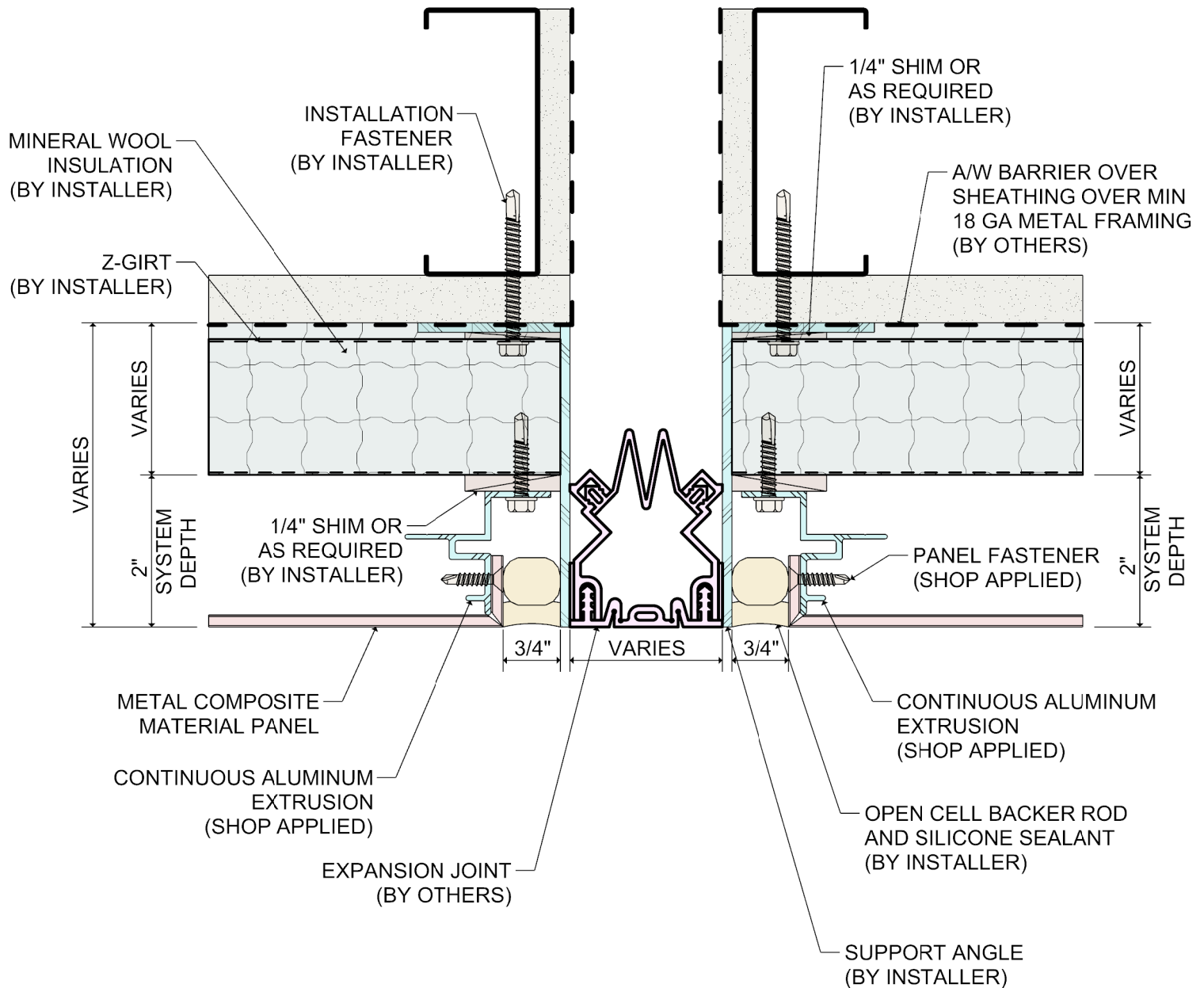










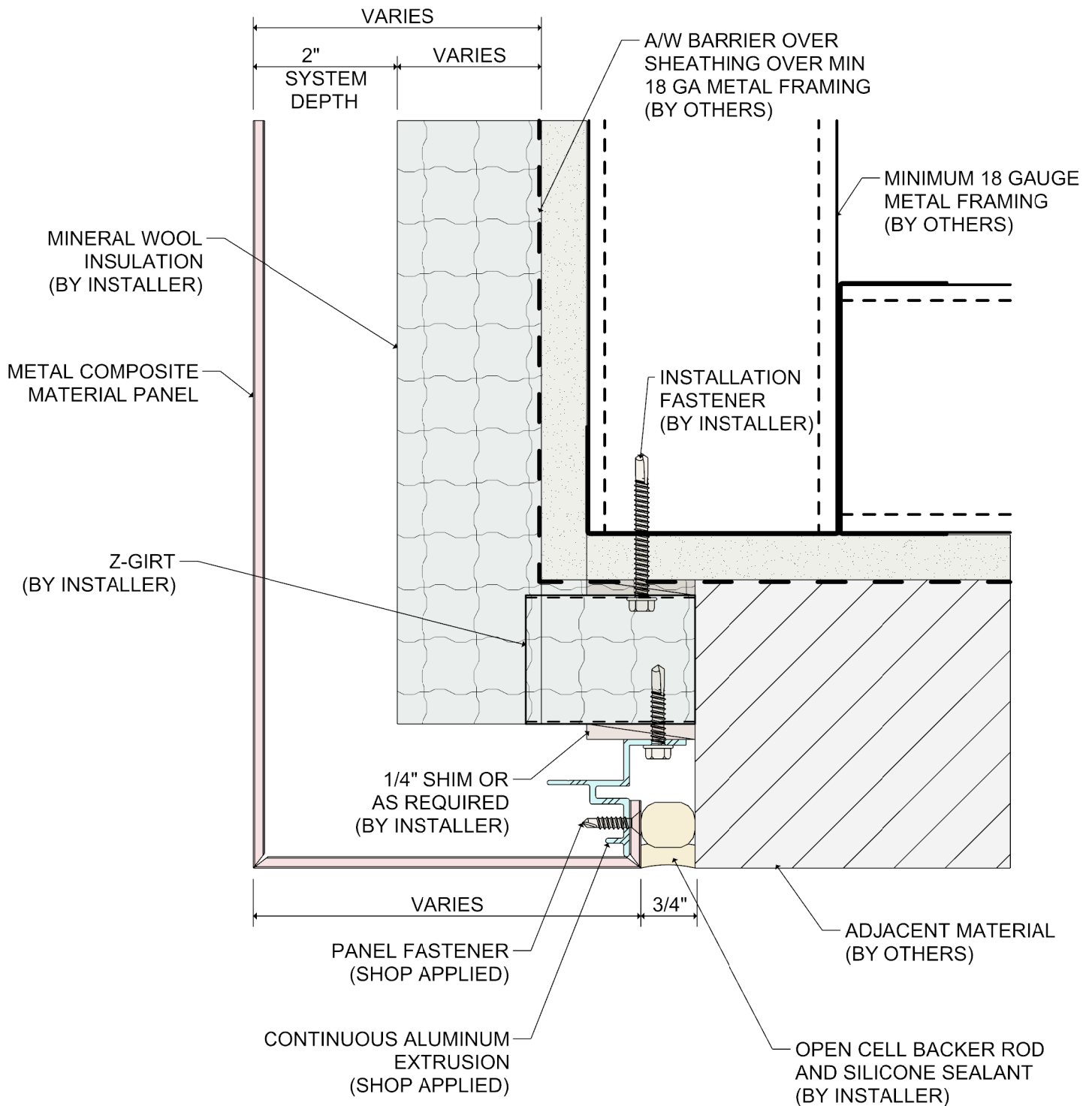


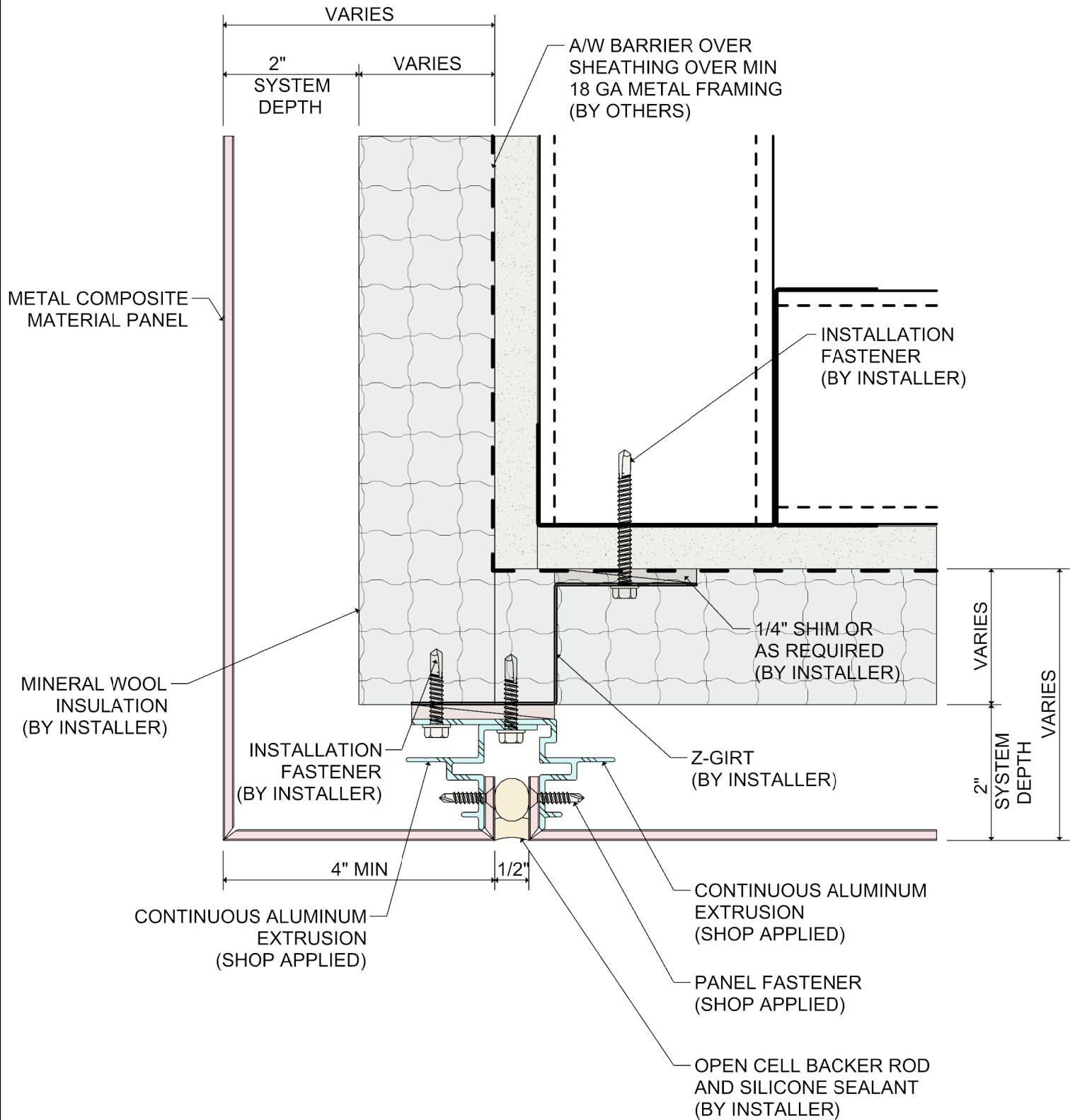
DETAIL:

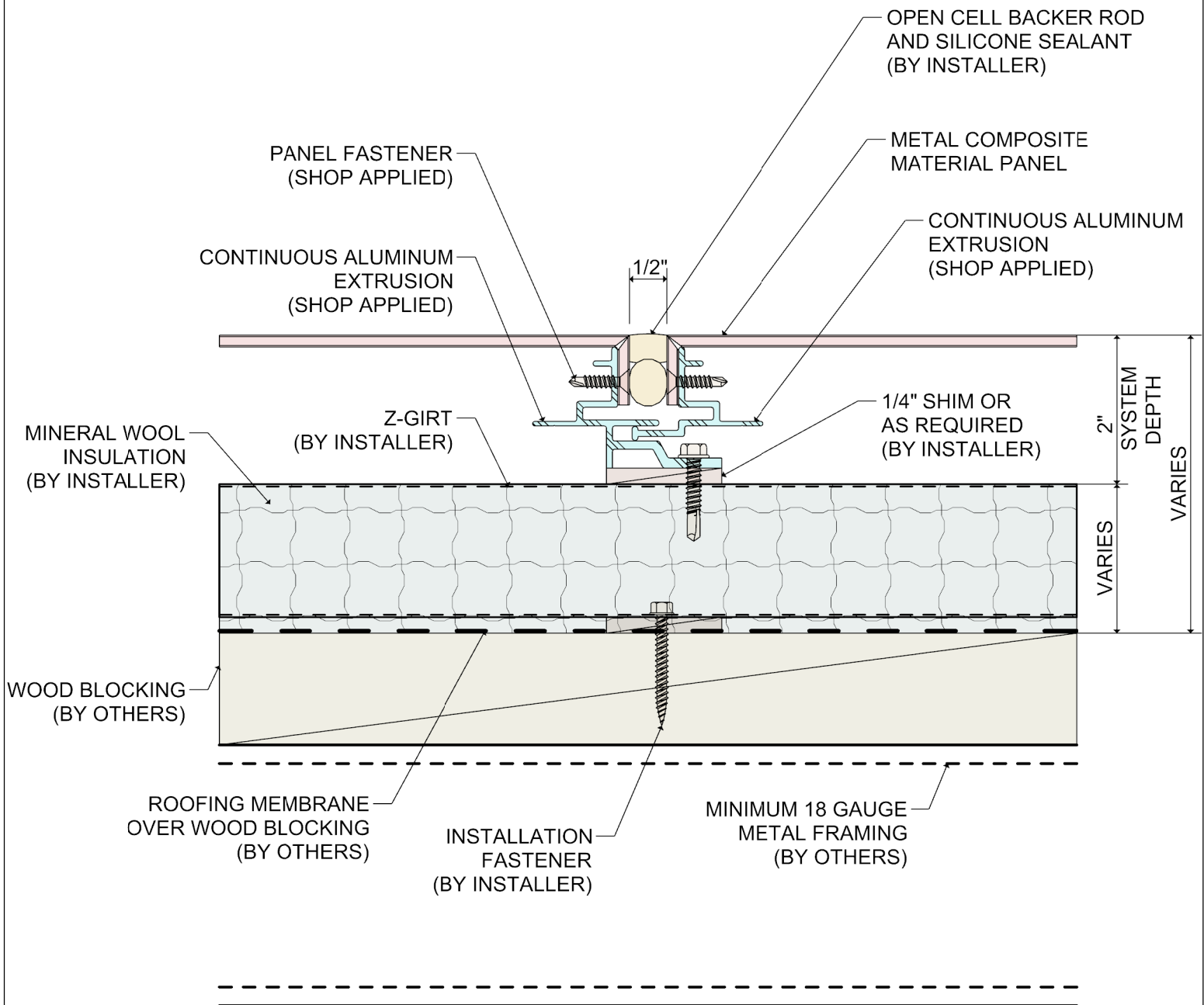
13

SYSTEM 1100 WET SEAL SYSTEM

JAMB AT EXPANSION JOINT







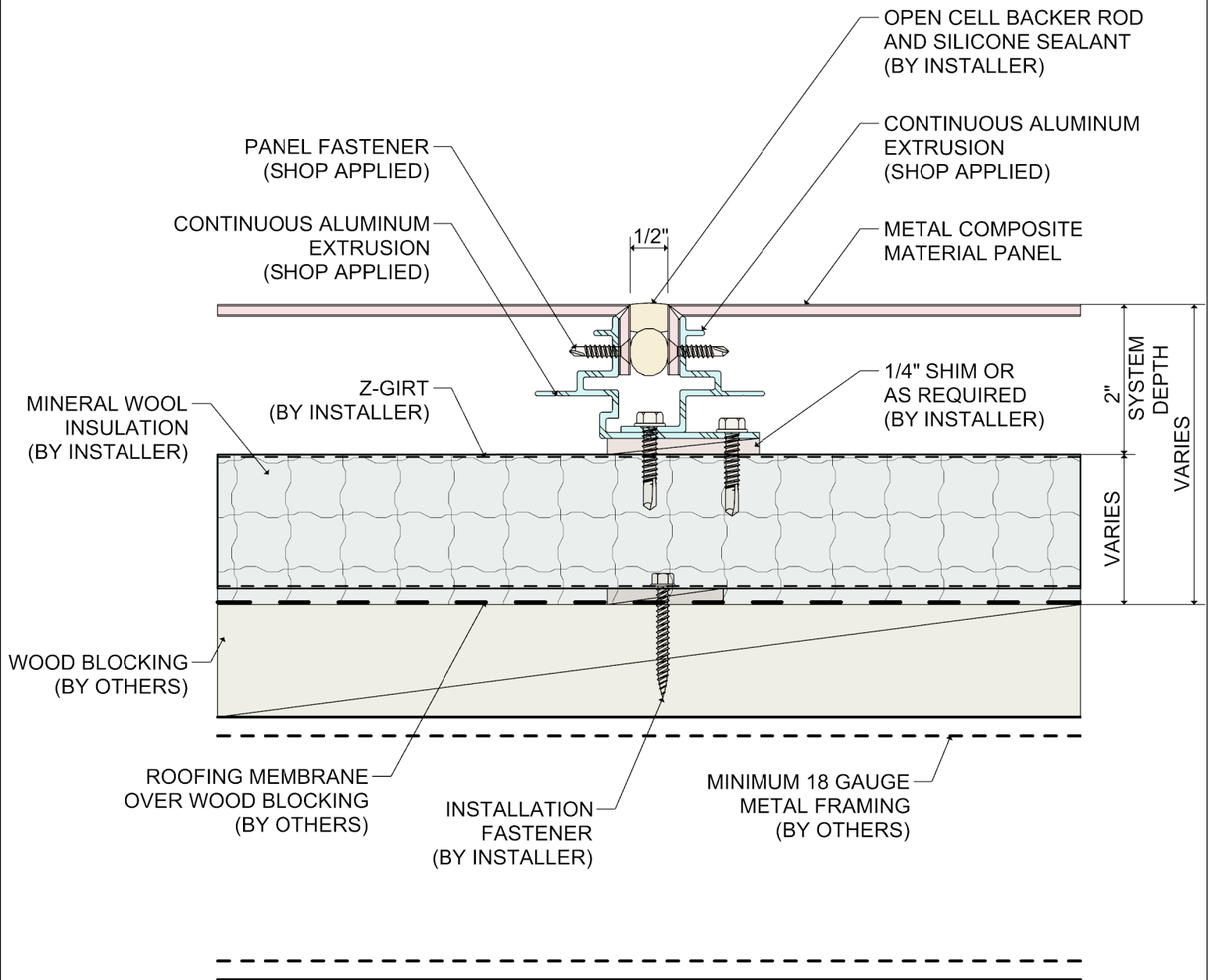
DETAIL:

16

SYSTEM 1100

WET SEAL SYSTEM

SKYWARD FACING JOINT- THERMAL EXPANSION



DETAIL:

16A

SYSTEM 1100

WET SEAL SYSTEM

SKYWARD FACING JOINT- HARD FASTENED

