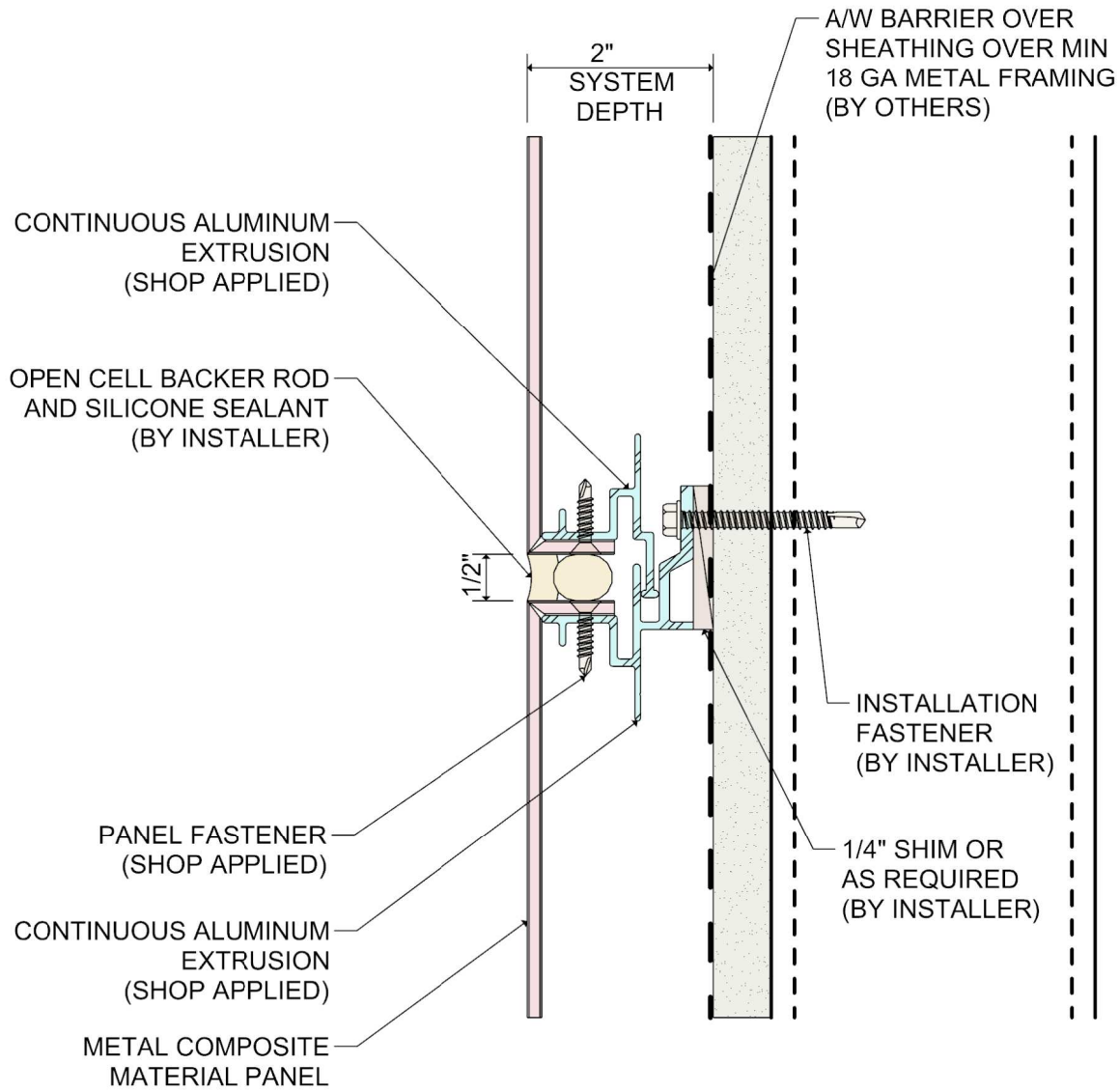
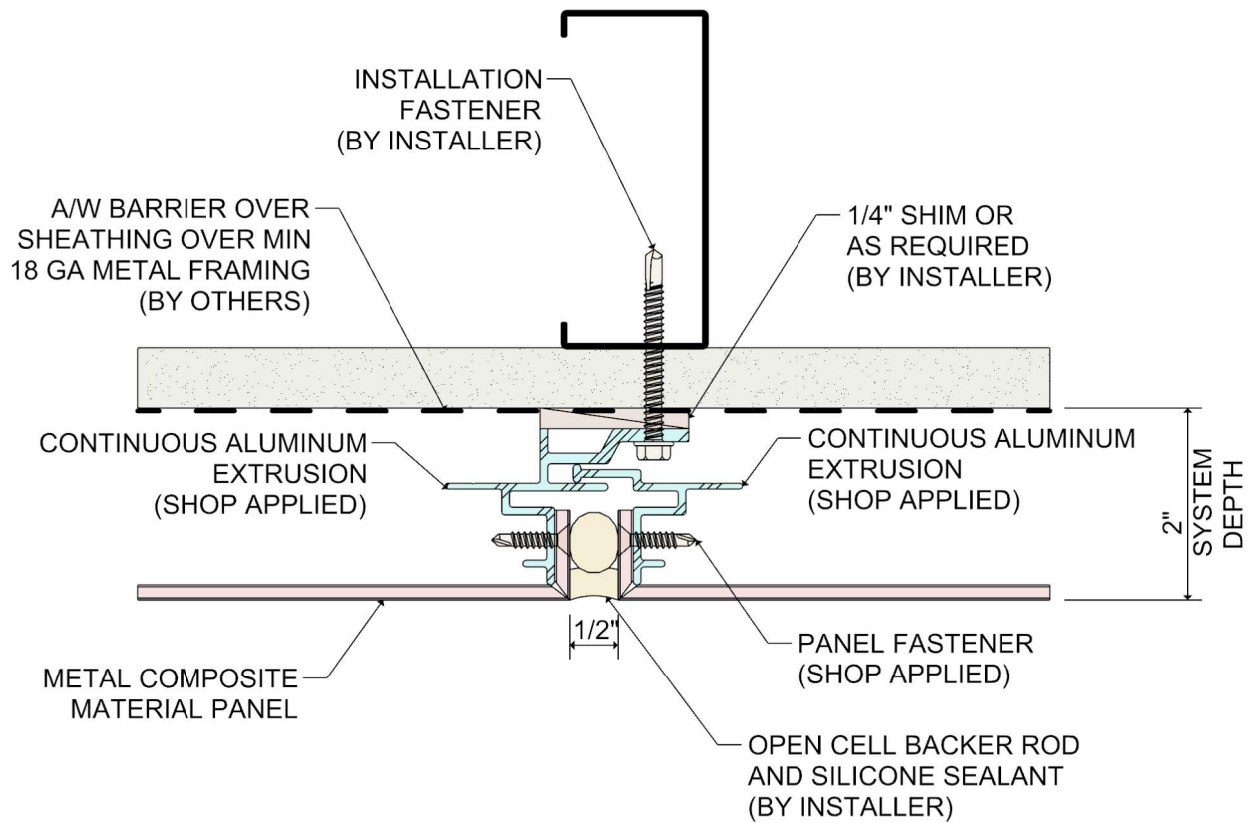


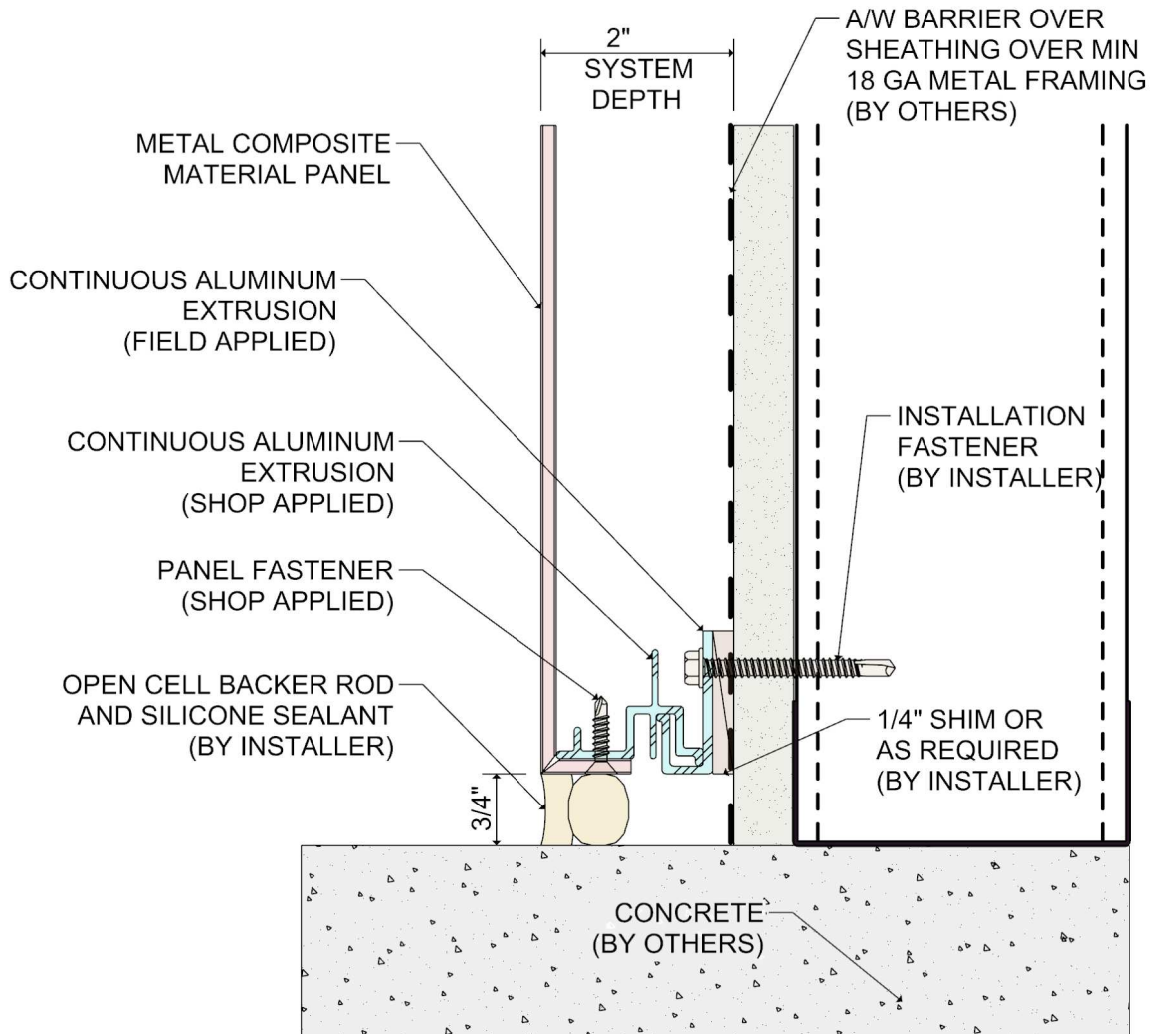


System 1100 Wet Seal Attachment System Details

Revised 11/2020







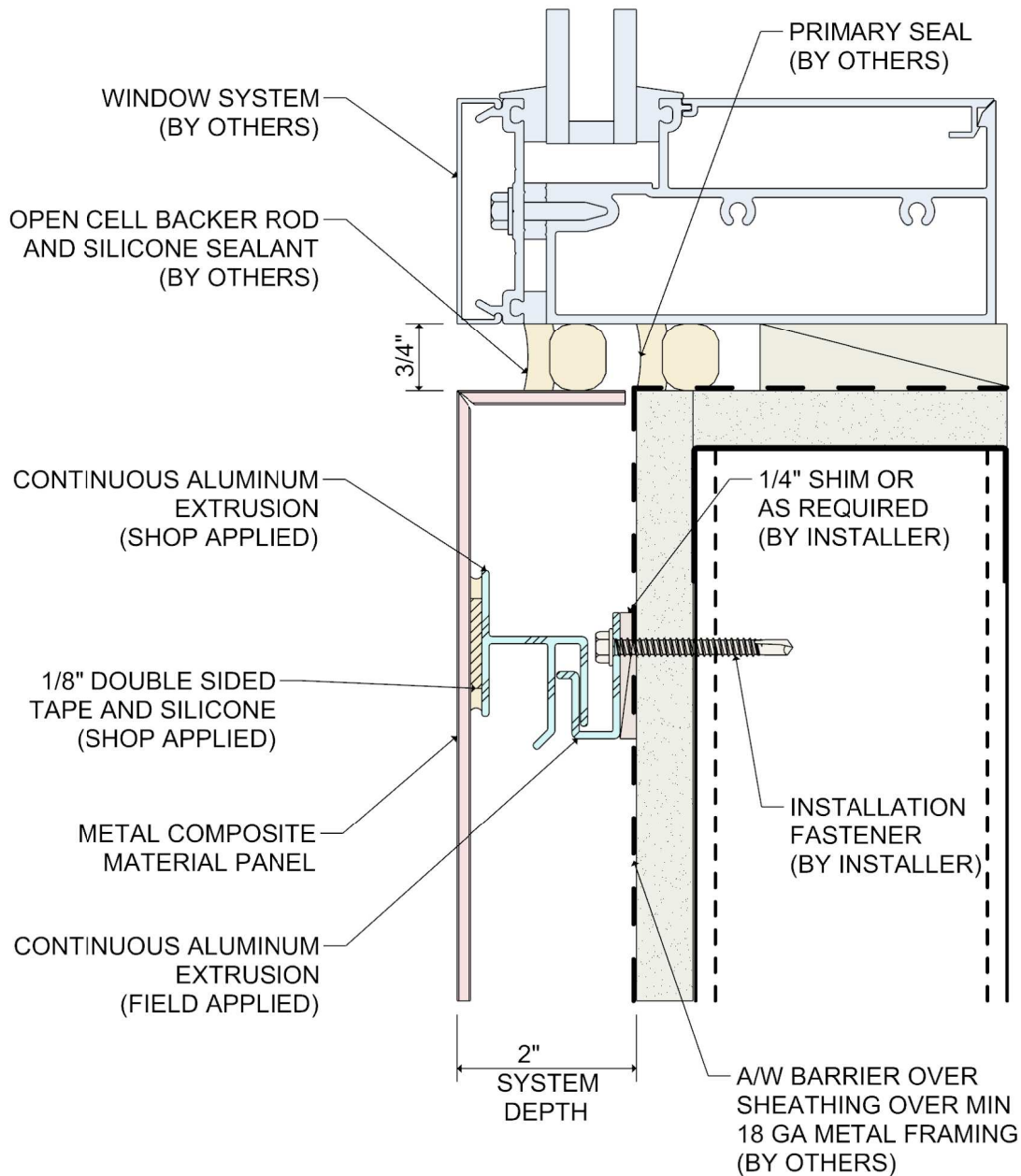
DETAIL:

3

SYSTEM 1100

WET SEAL SYSTEM

BASE DETAIL

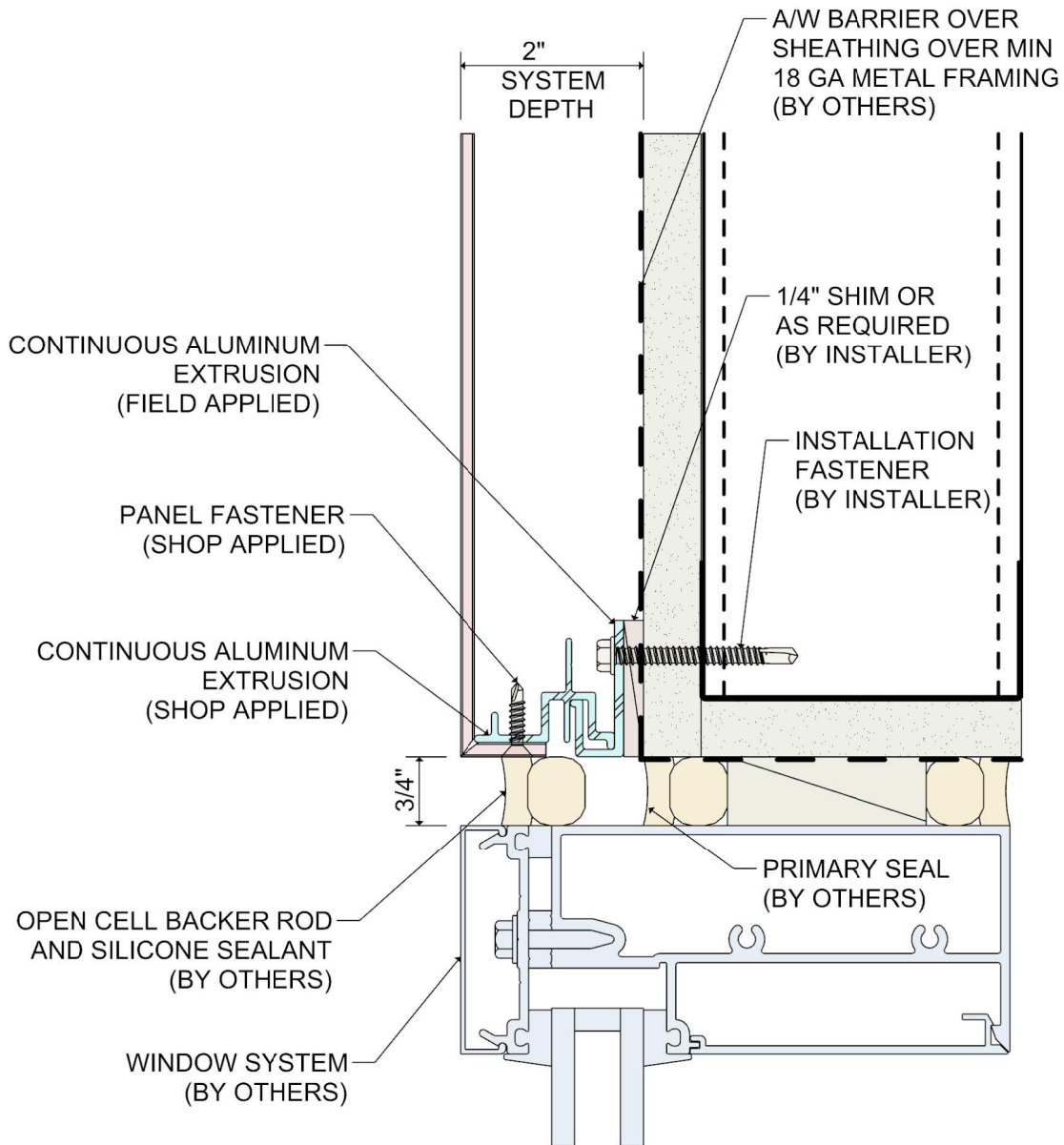


DETAIL:

4

SYSTEM 1100 WET SEAL SYSTEM

WINDOW SILL DETAIL

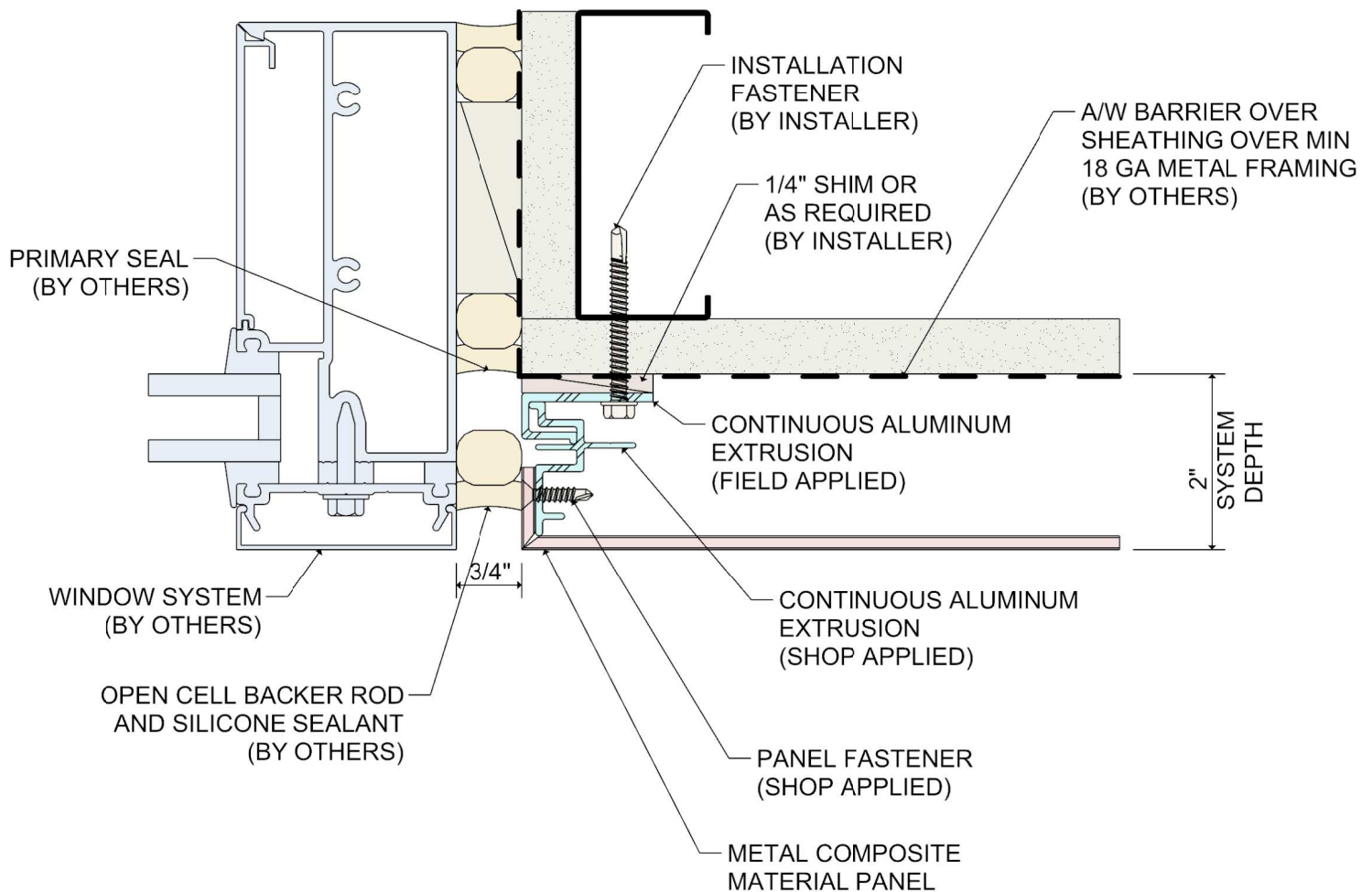


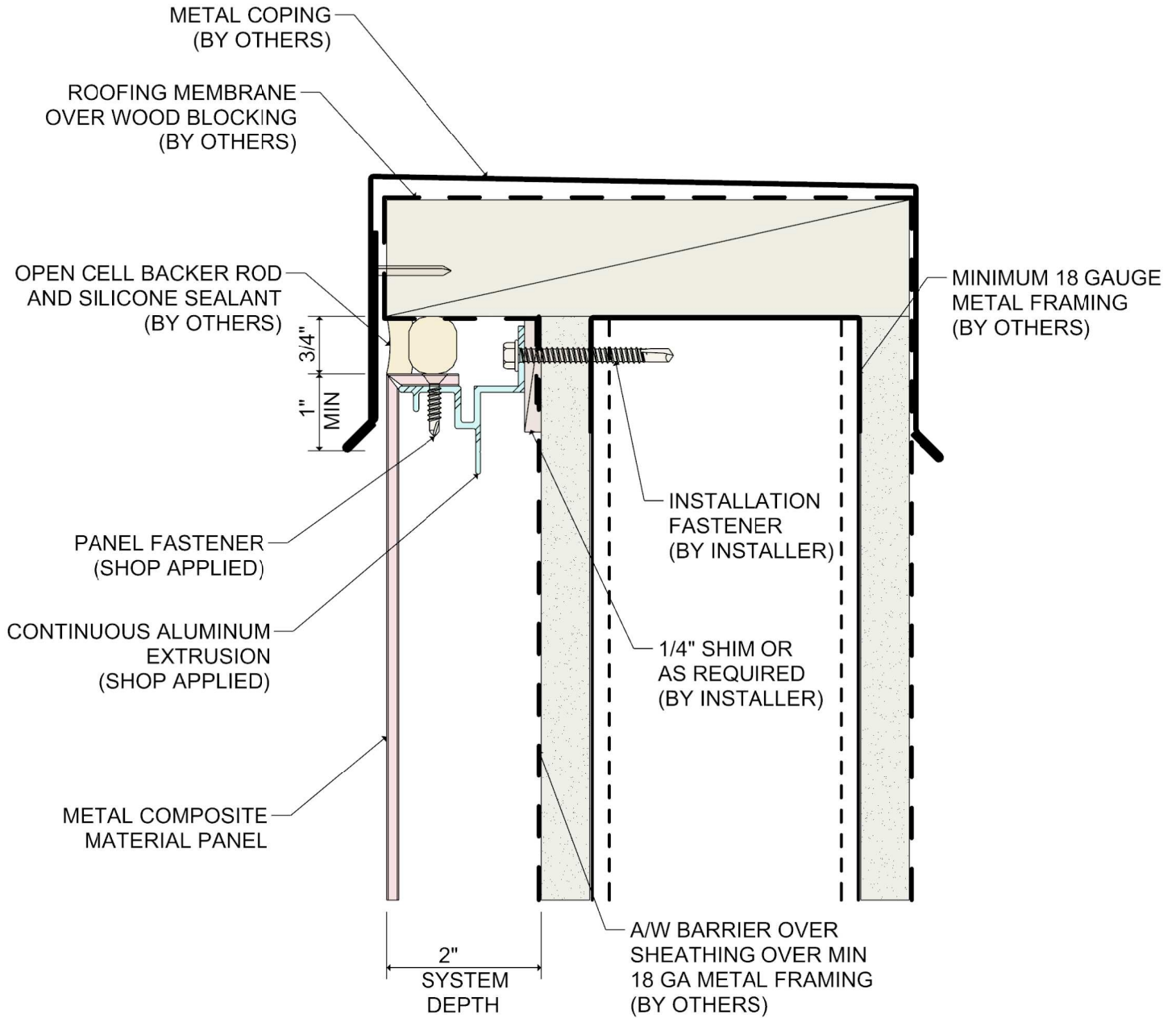
DETAIL:

5

SYSTEM 1100 WET SEAL SYSTEM

WINDOW HEAD DETAIL



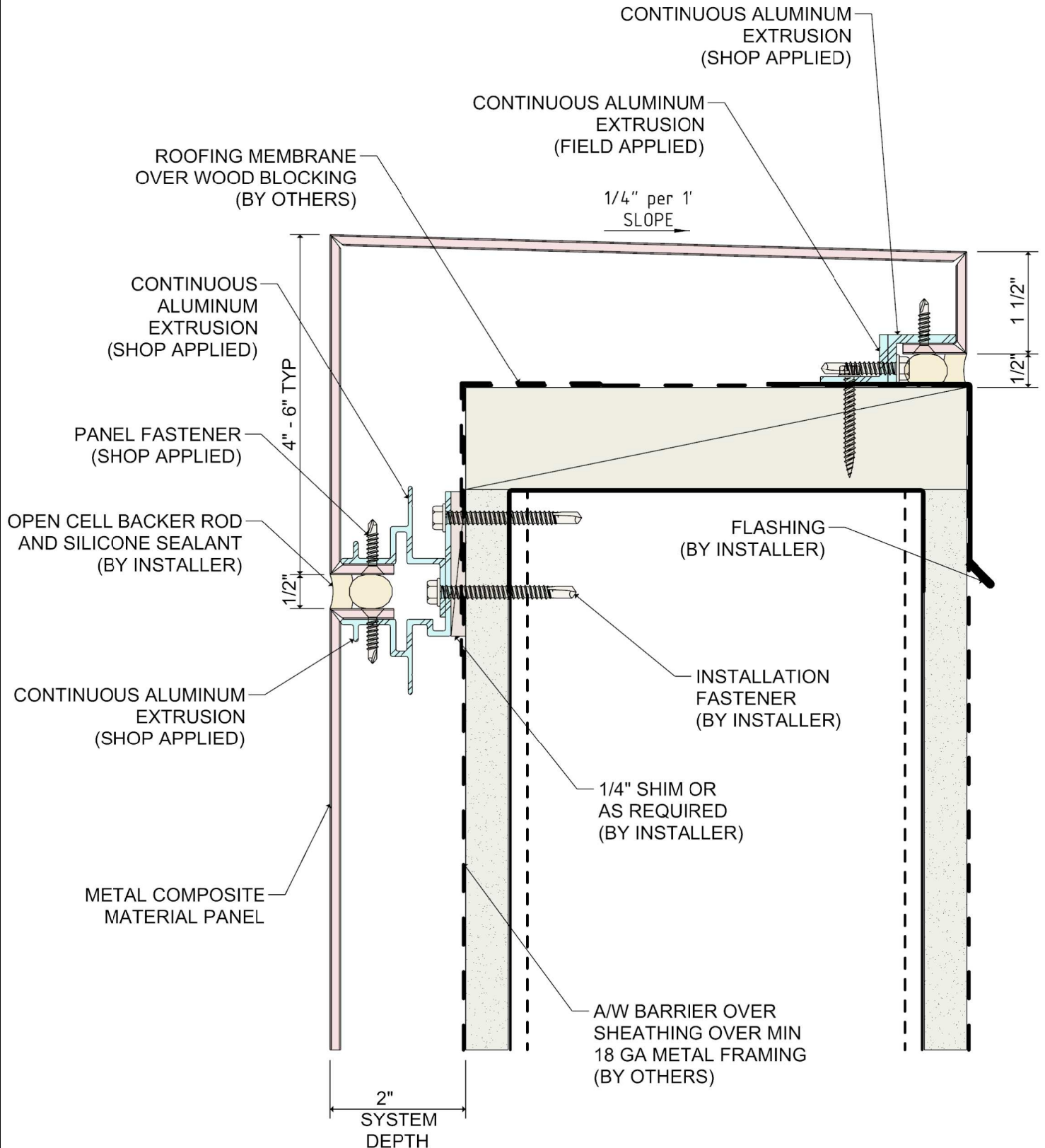


DETAIL:

7

SYSTEM 1100 WET SEAL SYSTEM

SHEET METAL COPING DETAIL

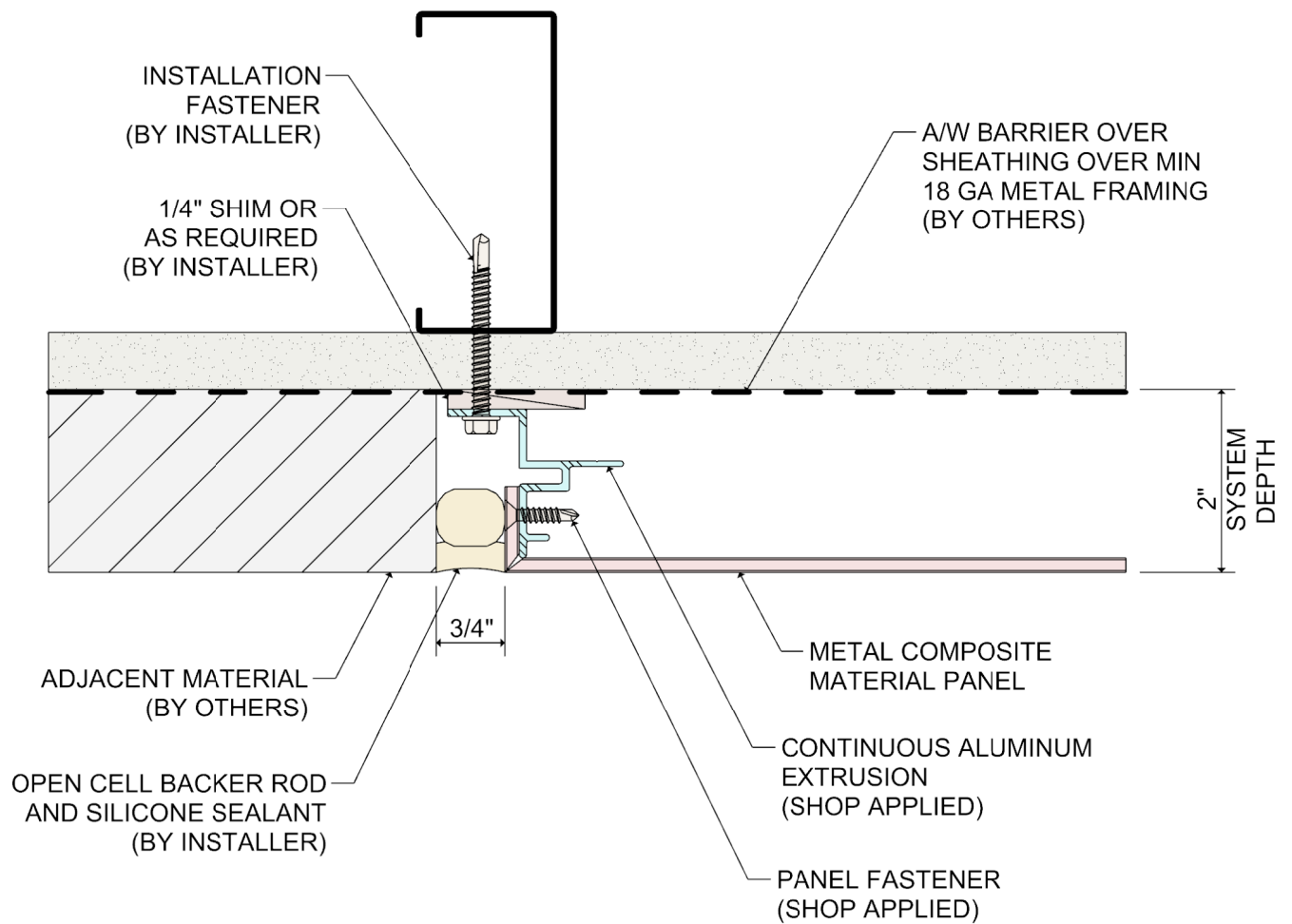


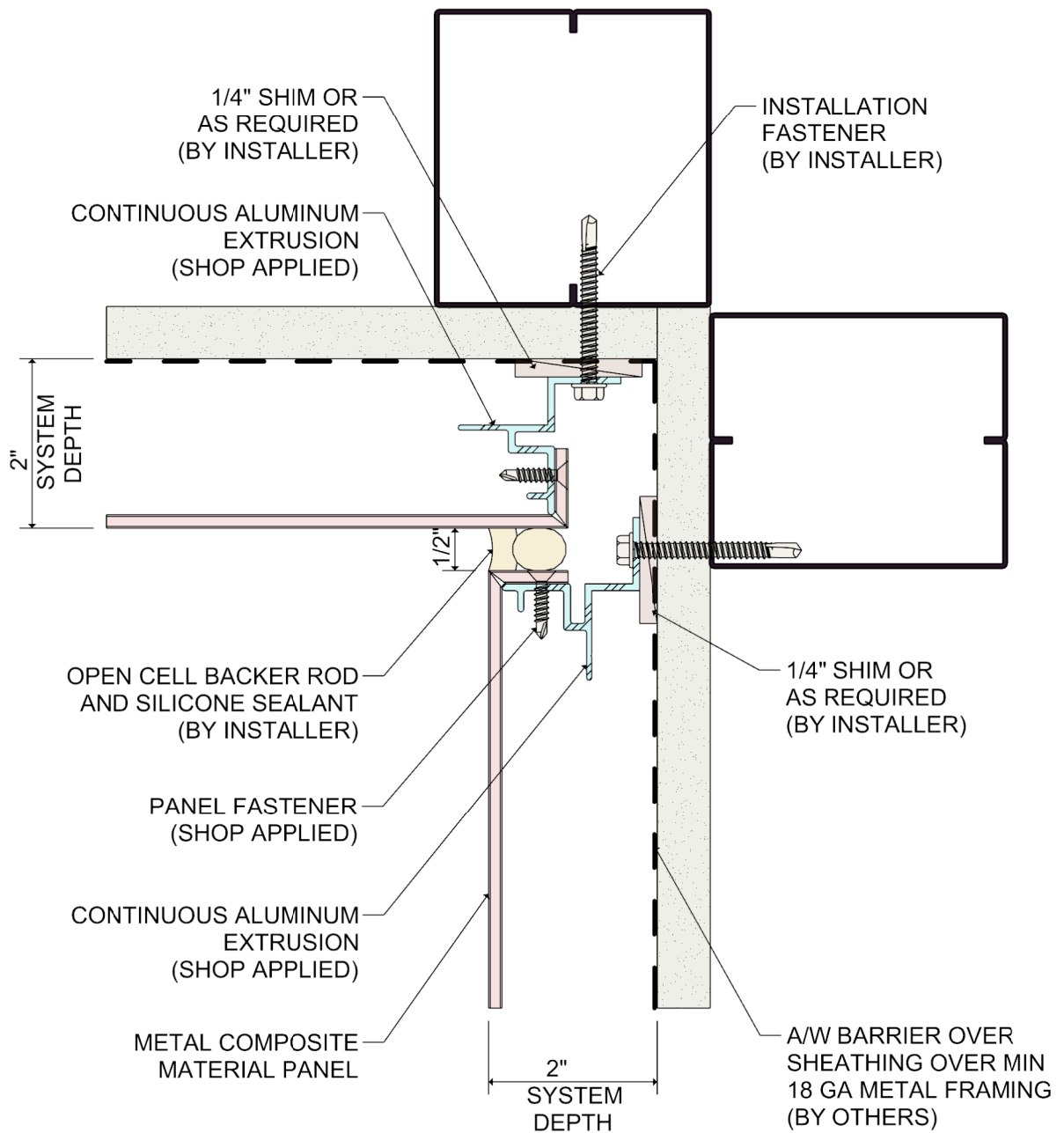
DETAIL:

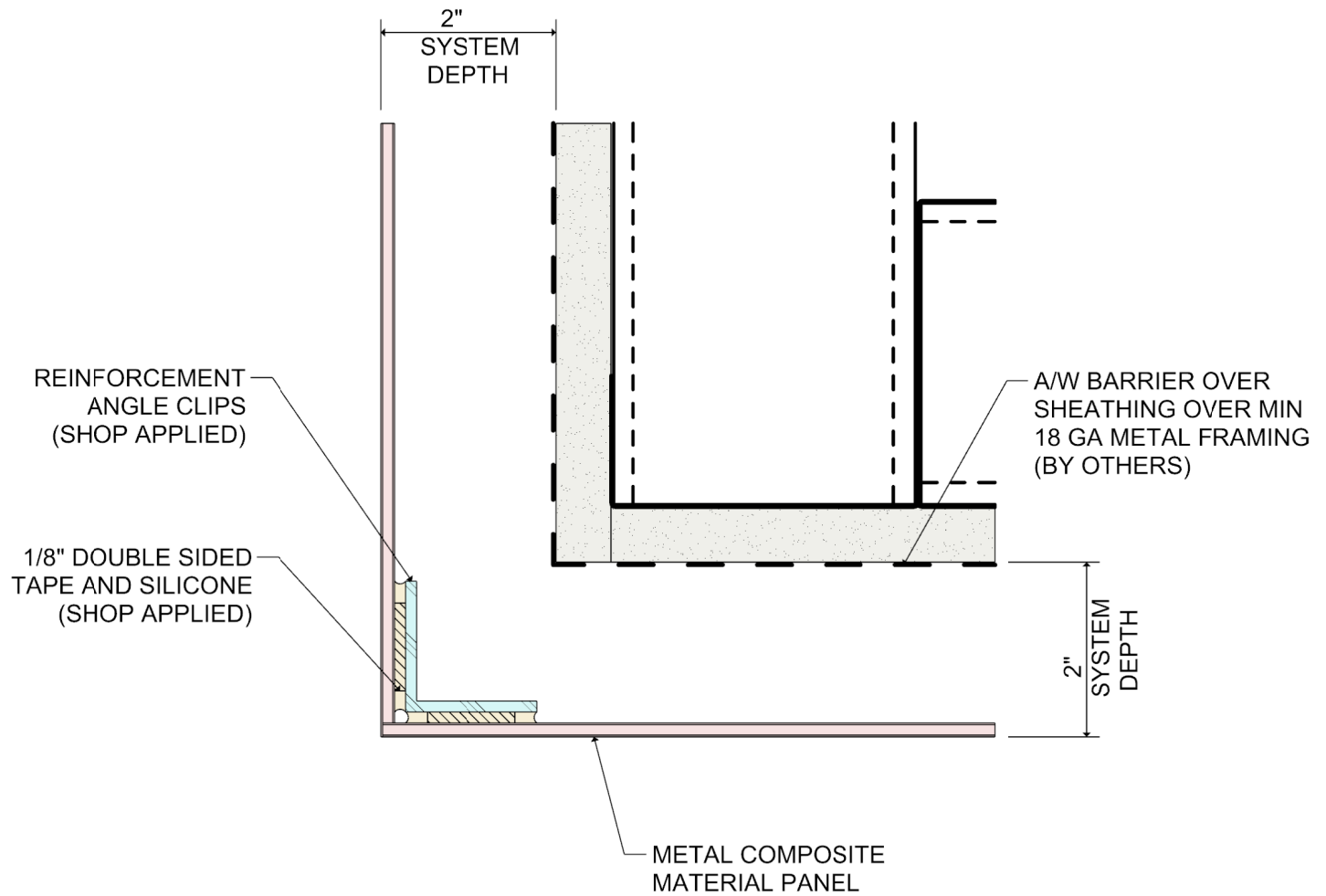
8

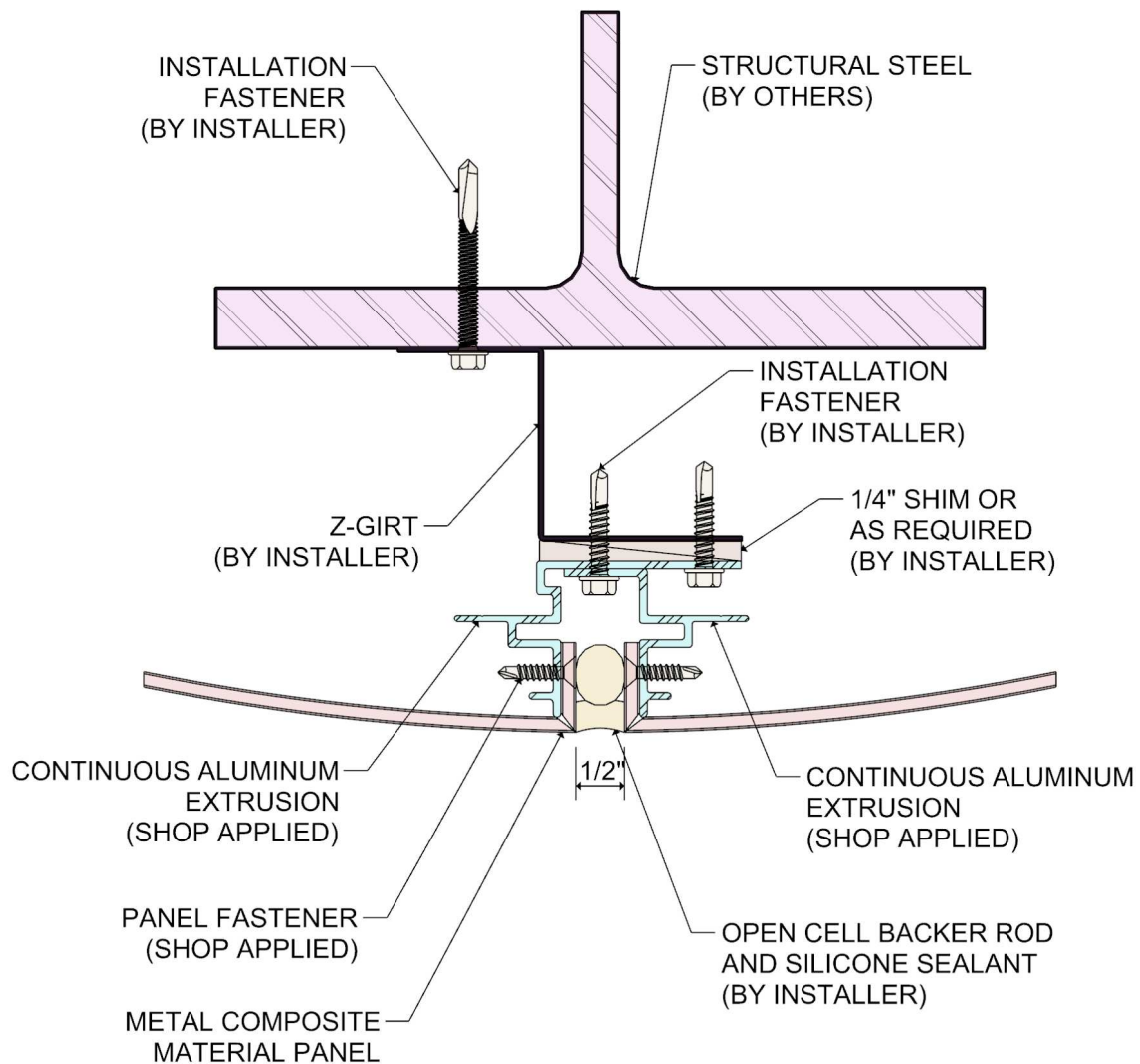
SYSTEM 1100 WET SEAL SYSTEM

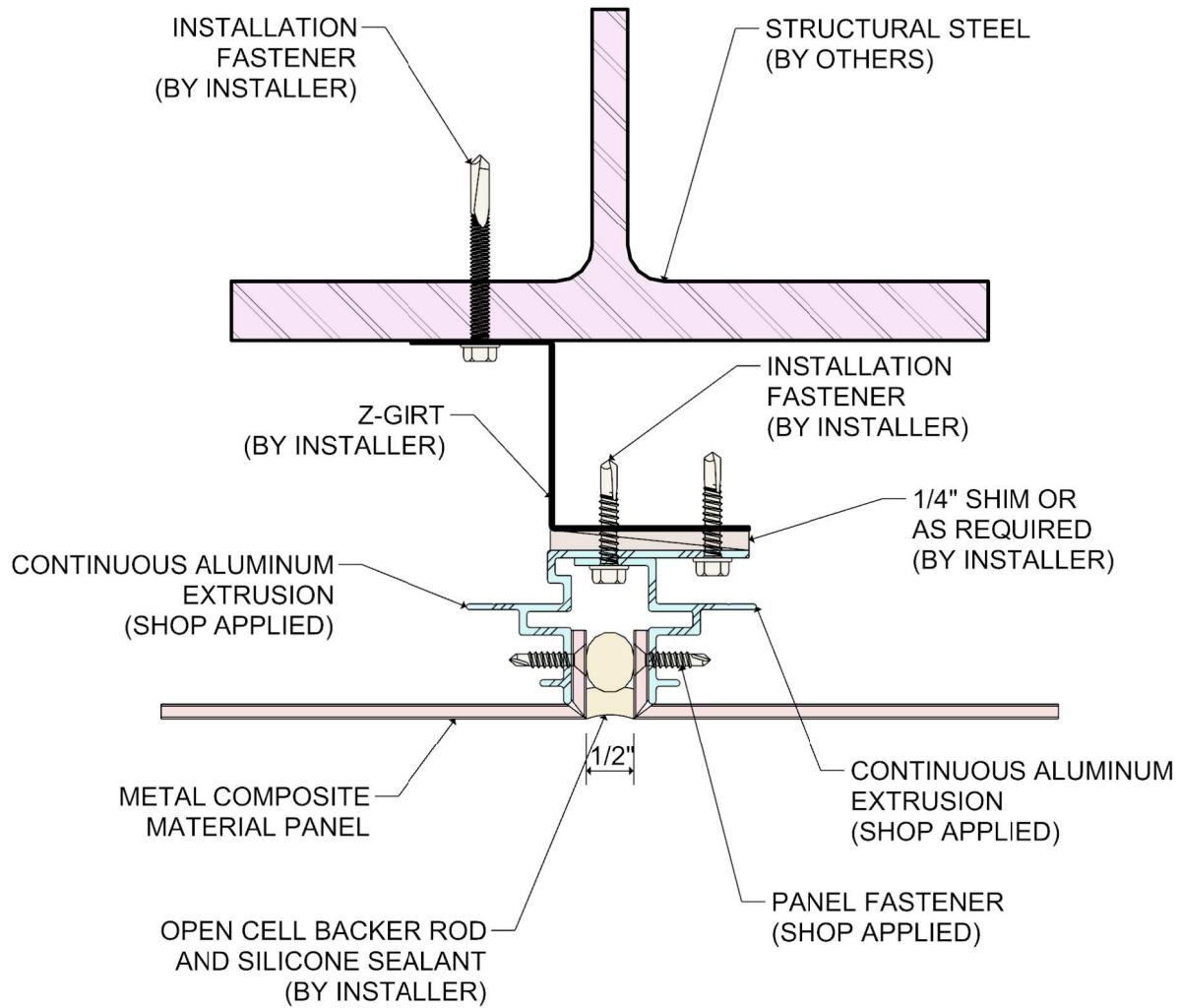
METAL COMPOSITE MATERIAL COPING DETAIL

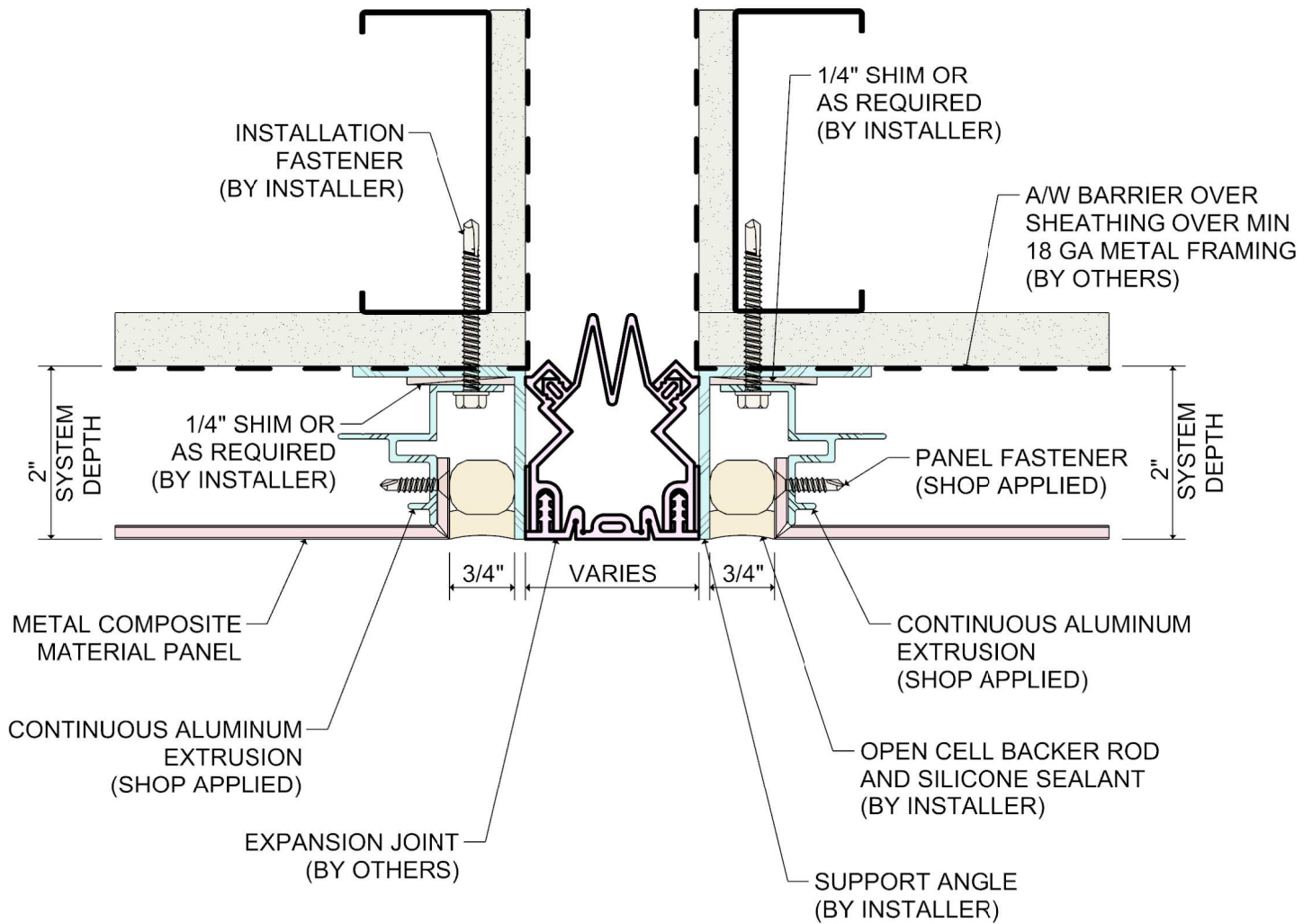


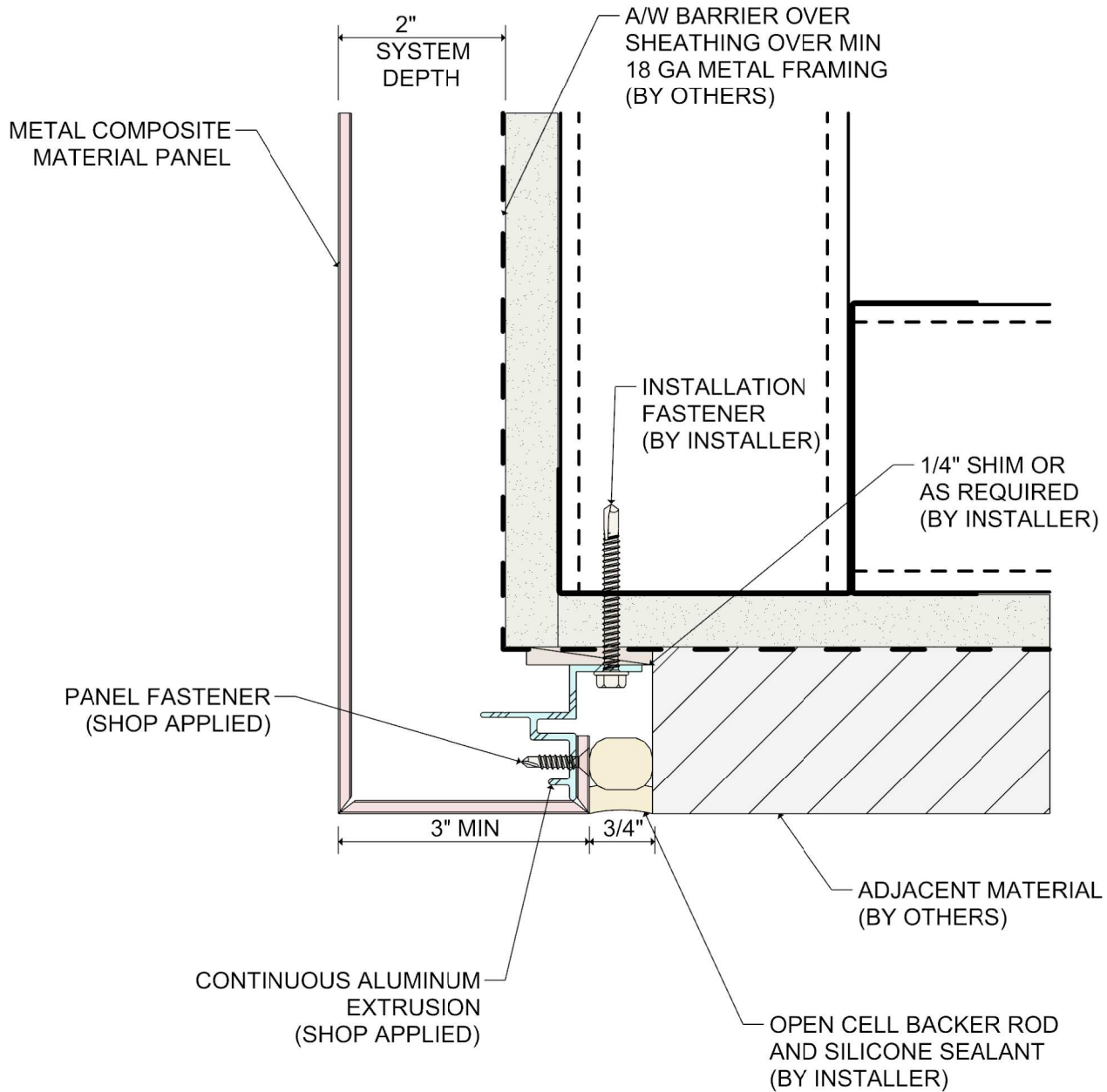


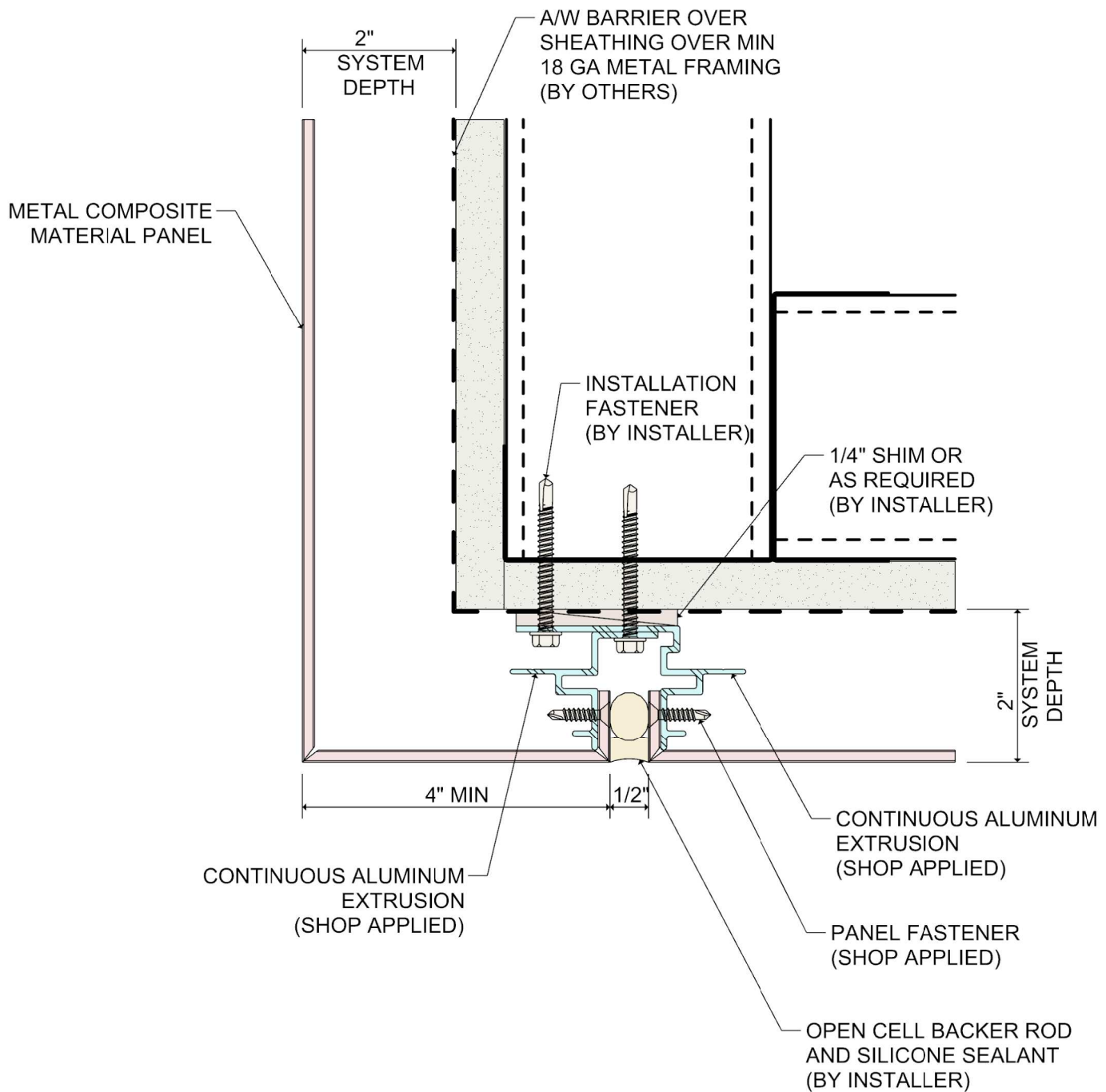










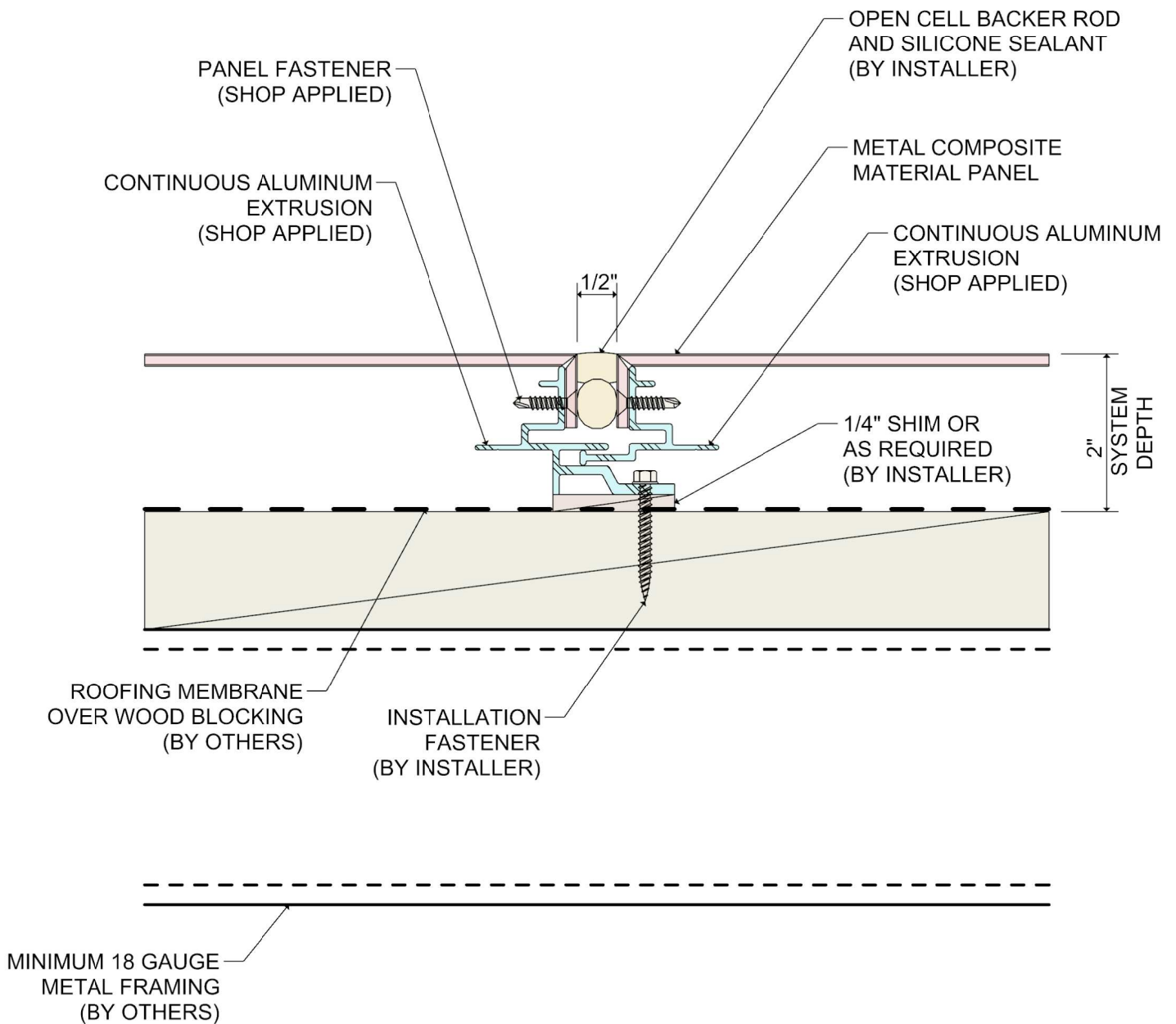


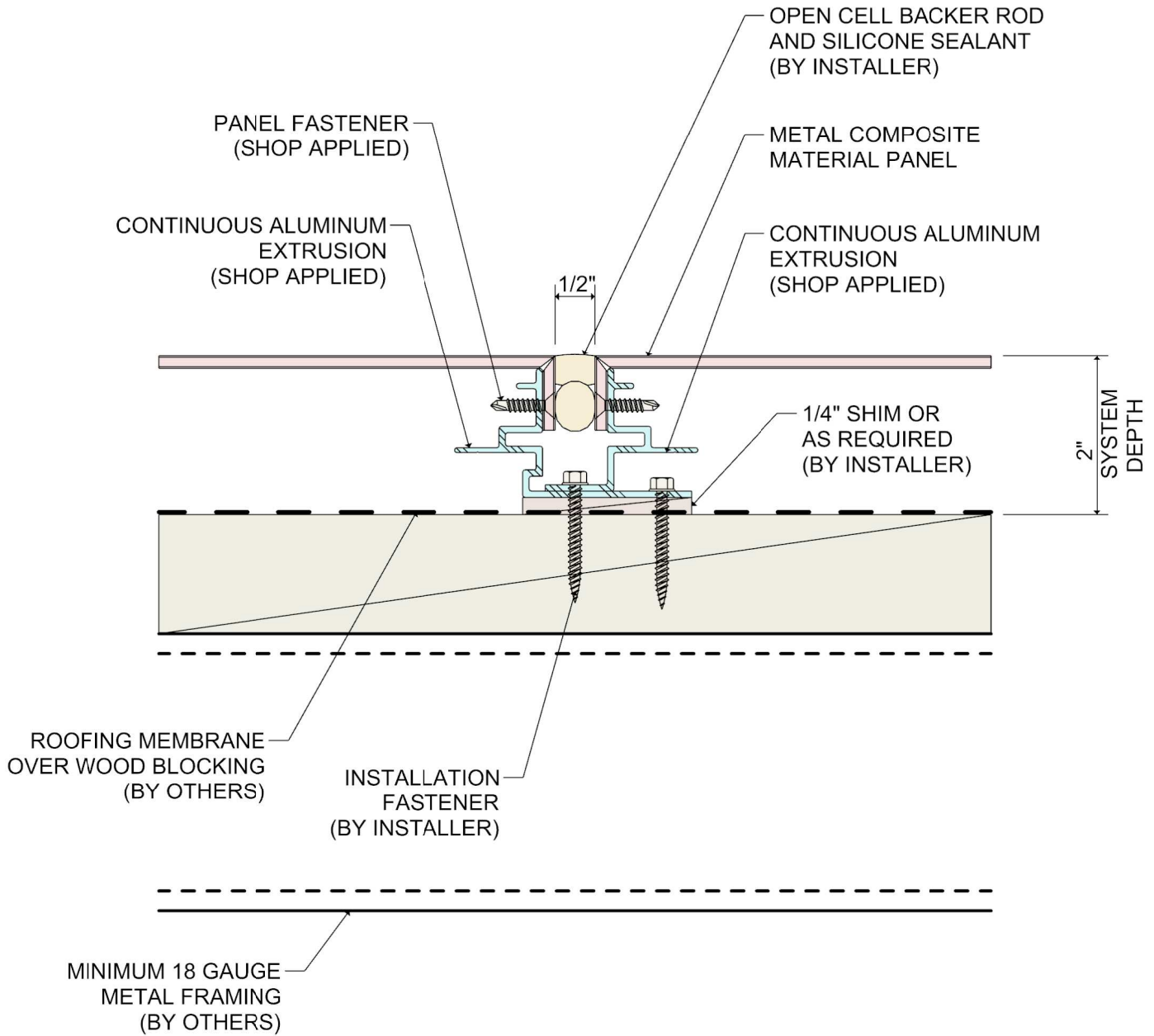
DETAIL:

15

SYSTEM 1100 WET SEAL SYSTEM

SOFFIT TRANSITION





DETAIL:
16A

SYSTEM 1100	WET SEAL SYSTEM
SKYWARD FACING JOINT- HARD FASTENED	

