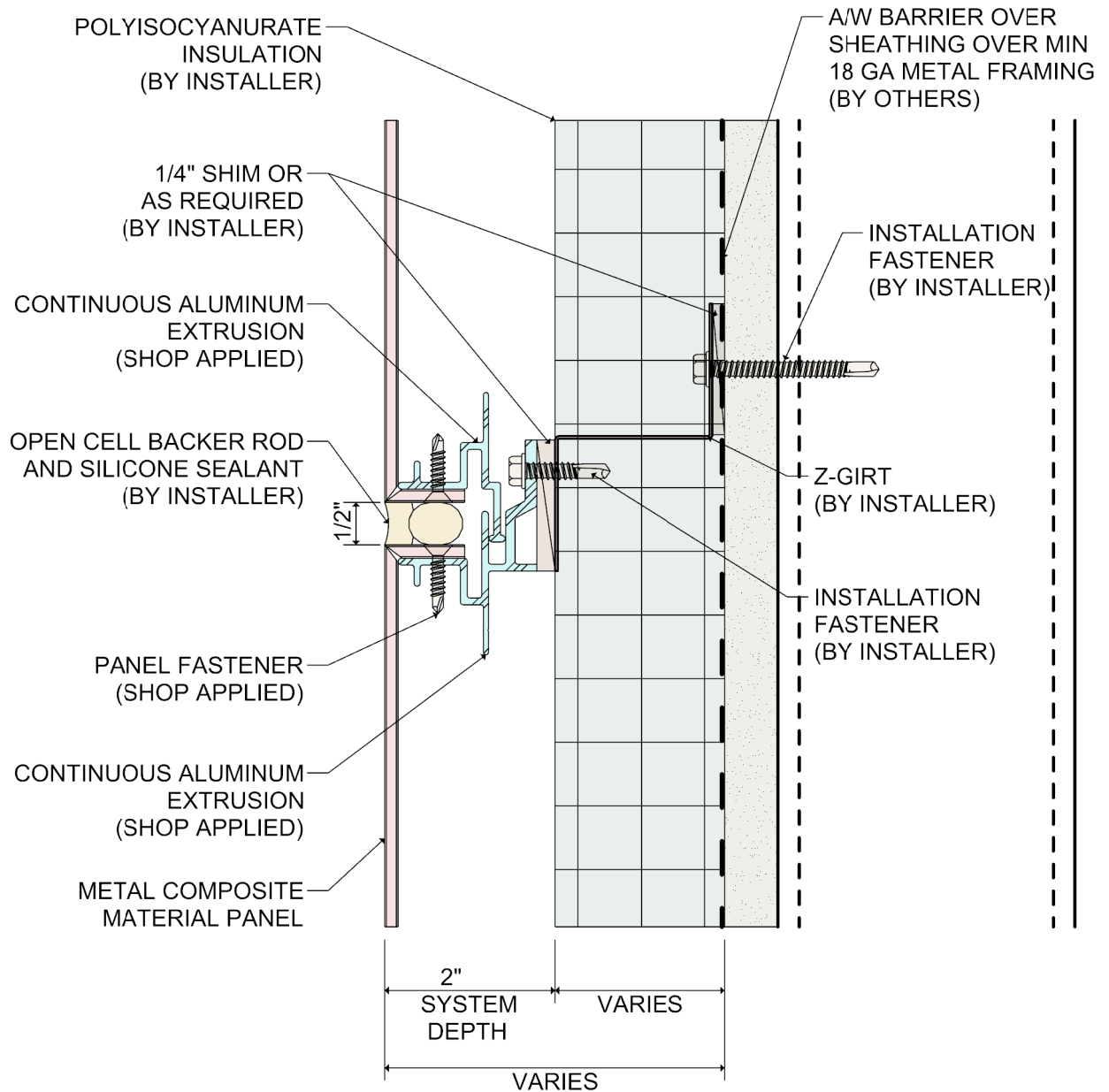
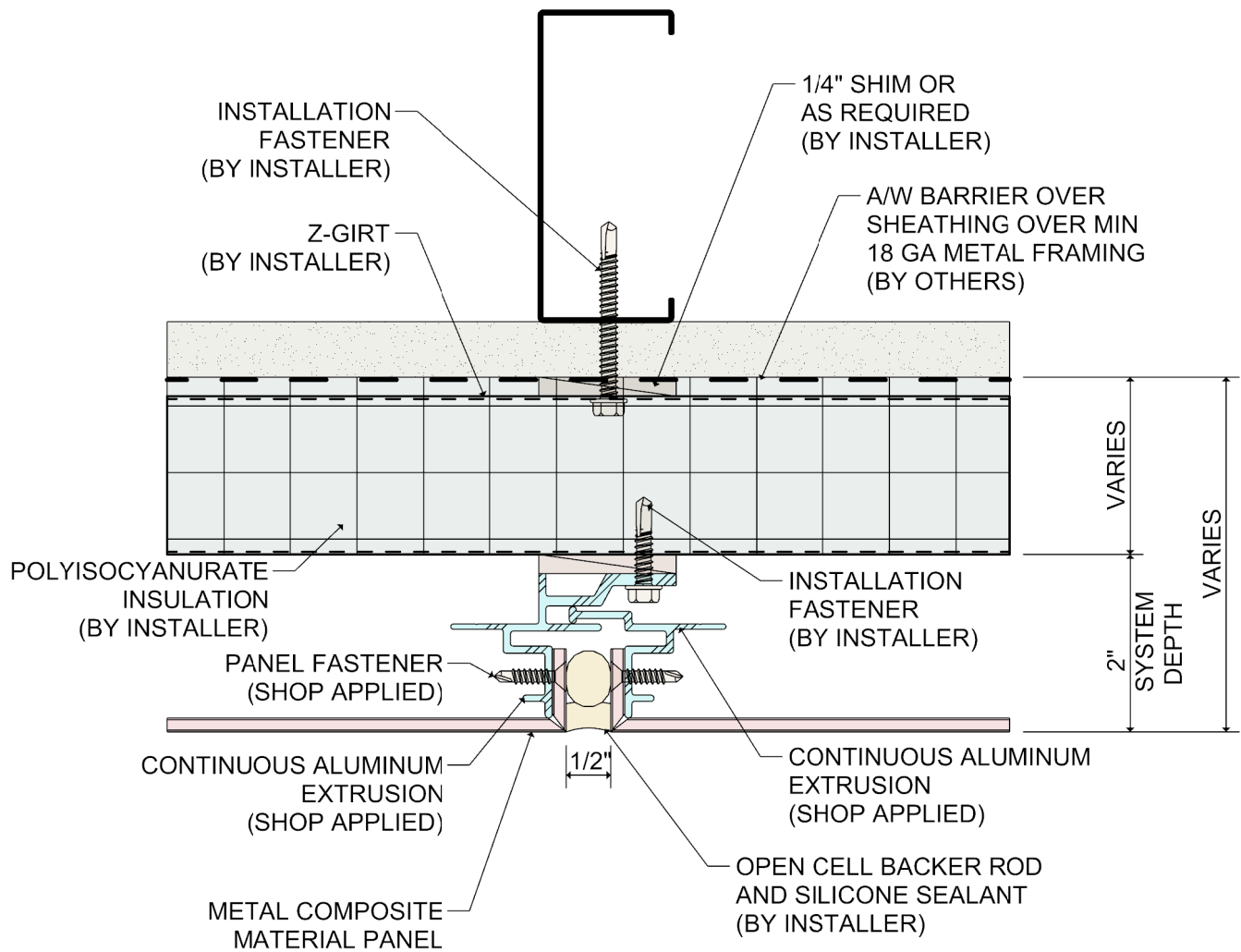


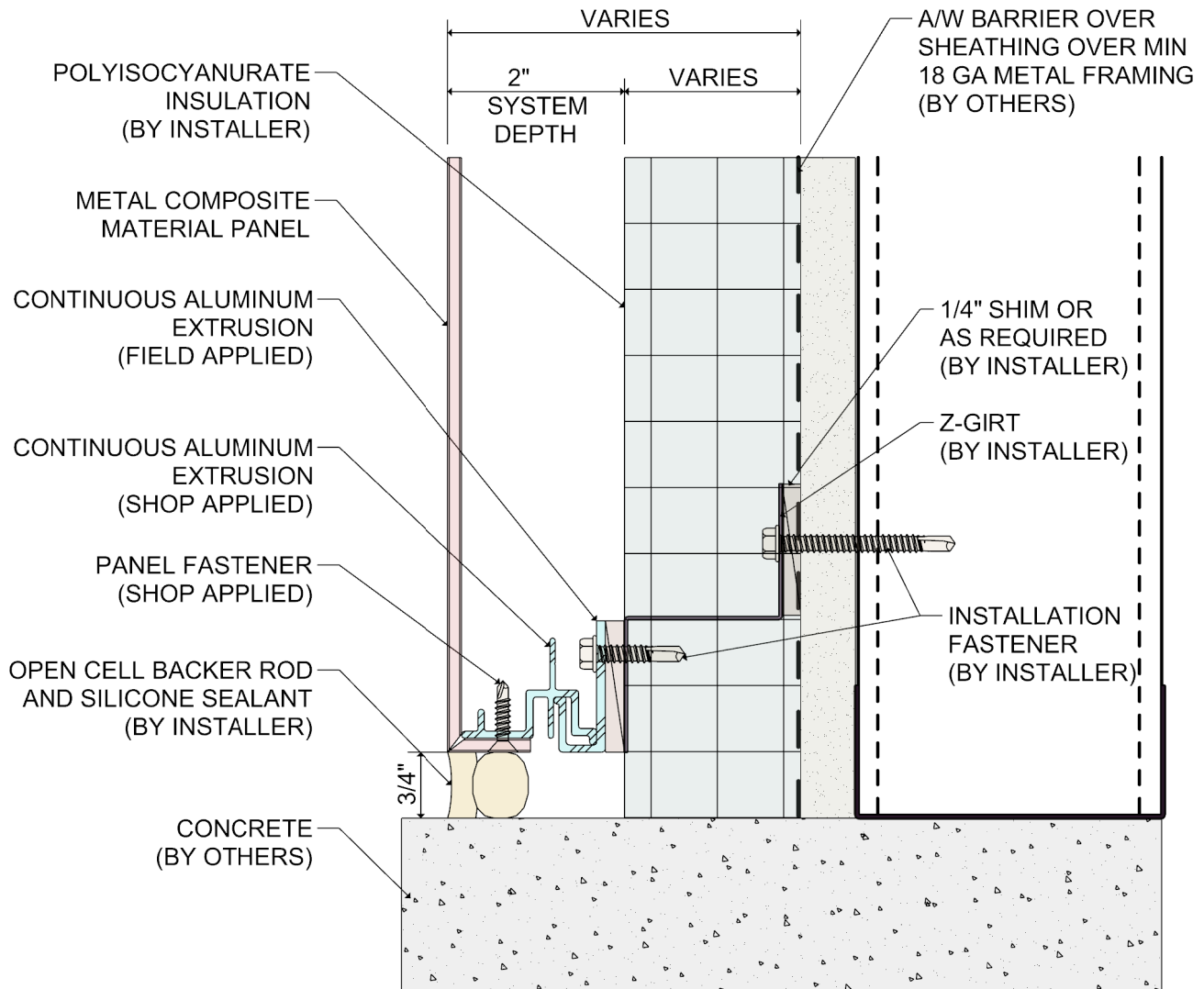


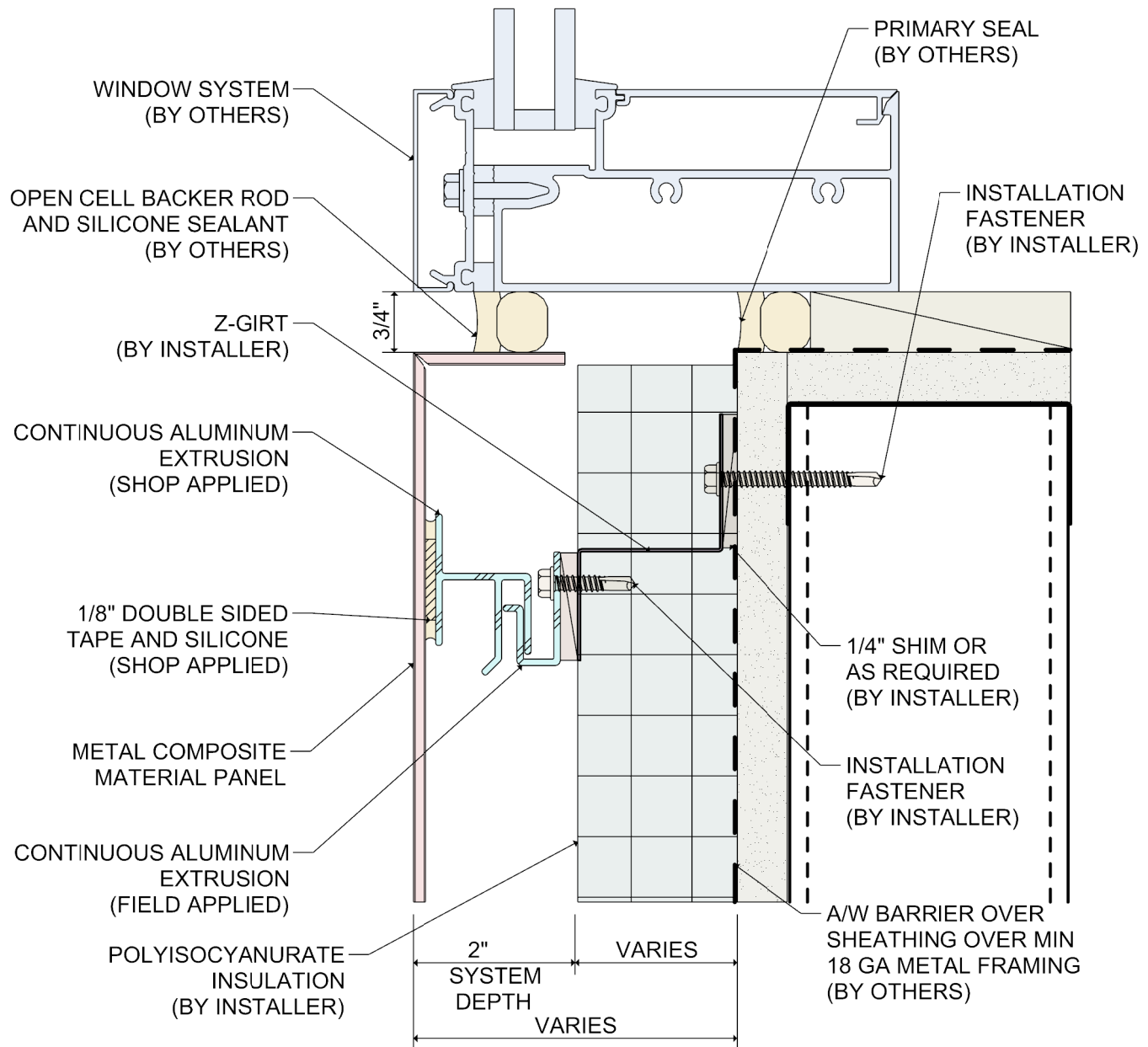
## System 1100 Wet Seal Attachment System Details with Polyisocyanurate Insulation

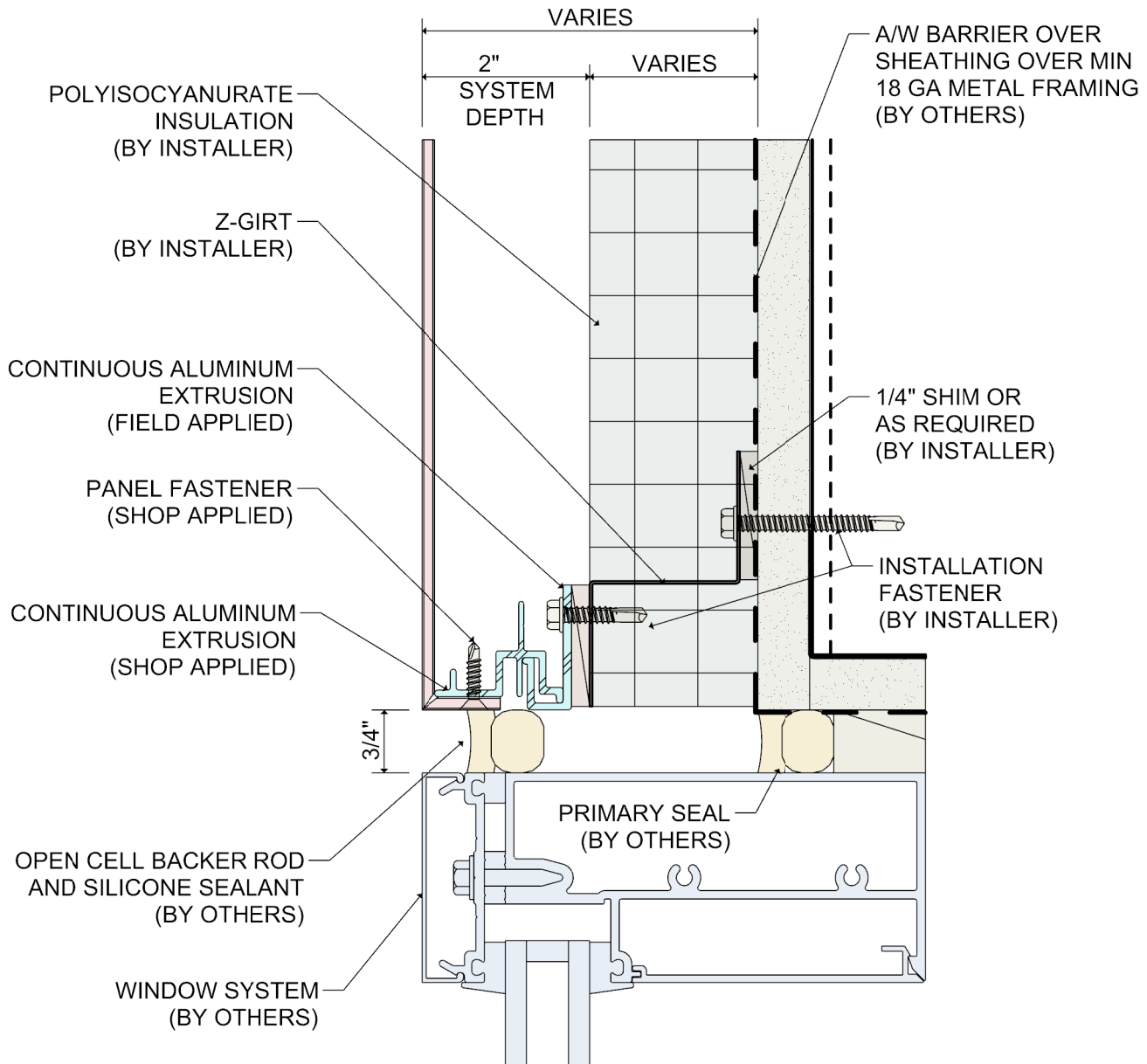
Revised 11/2020

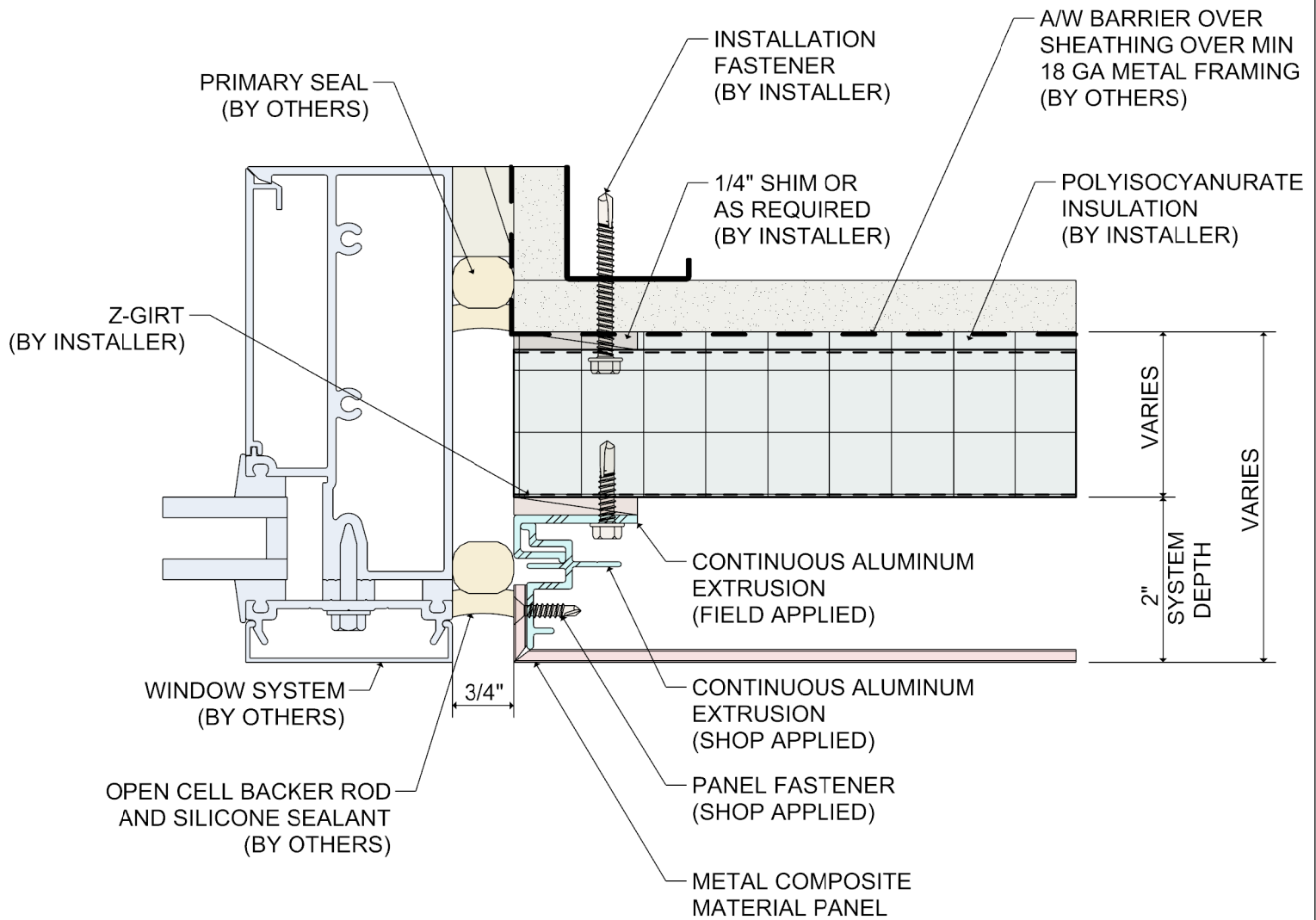




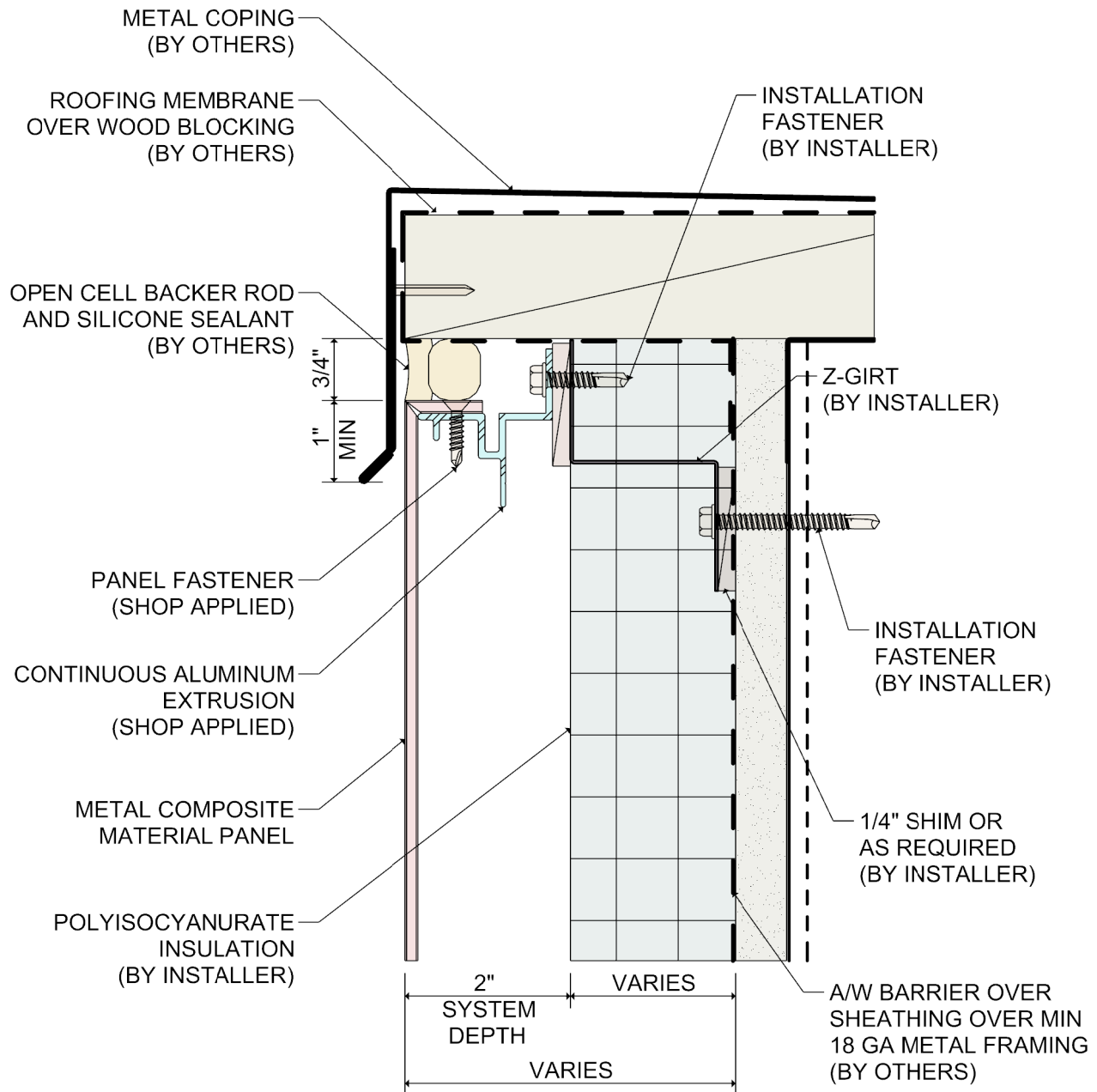




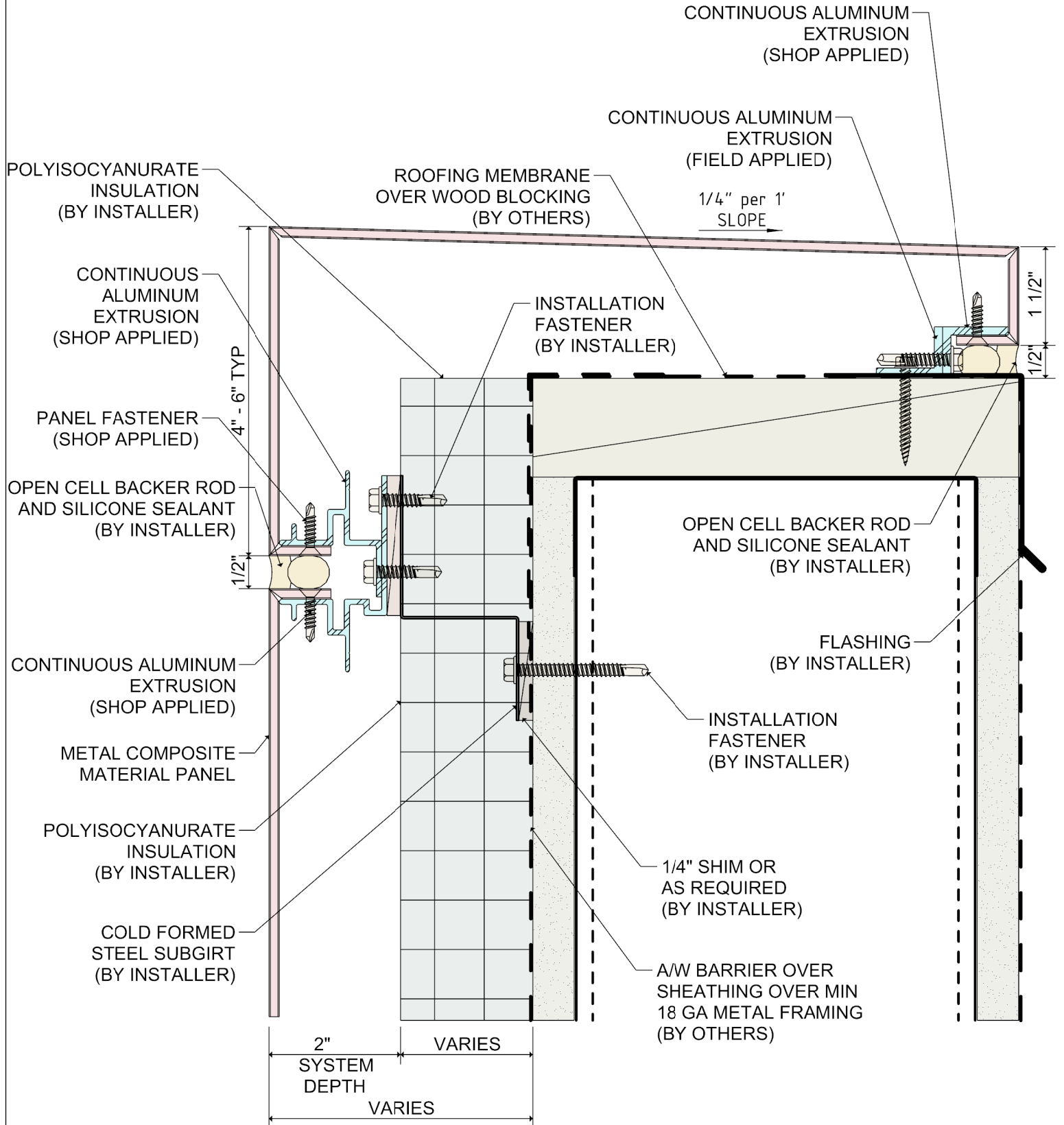












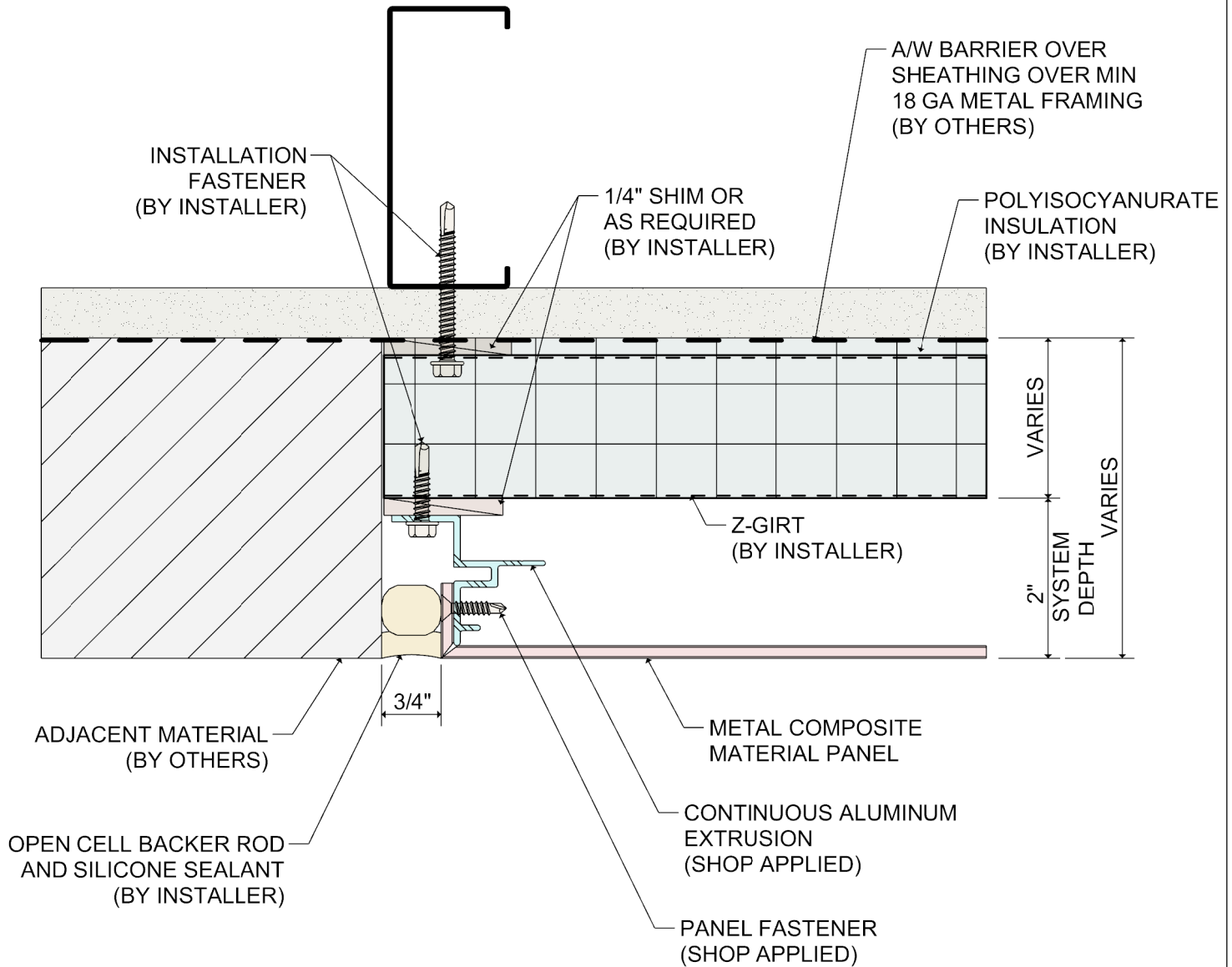
DETAIL:

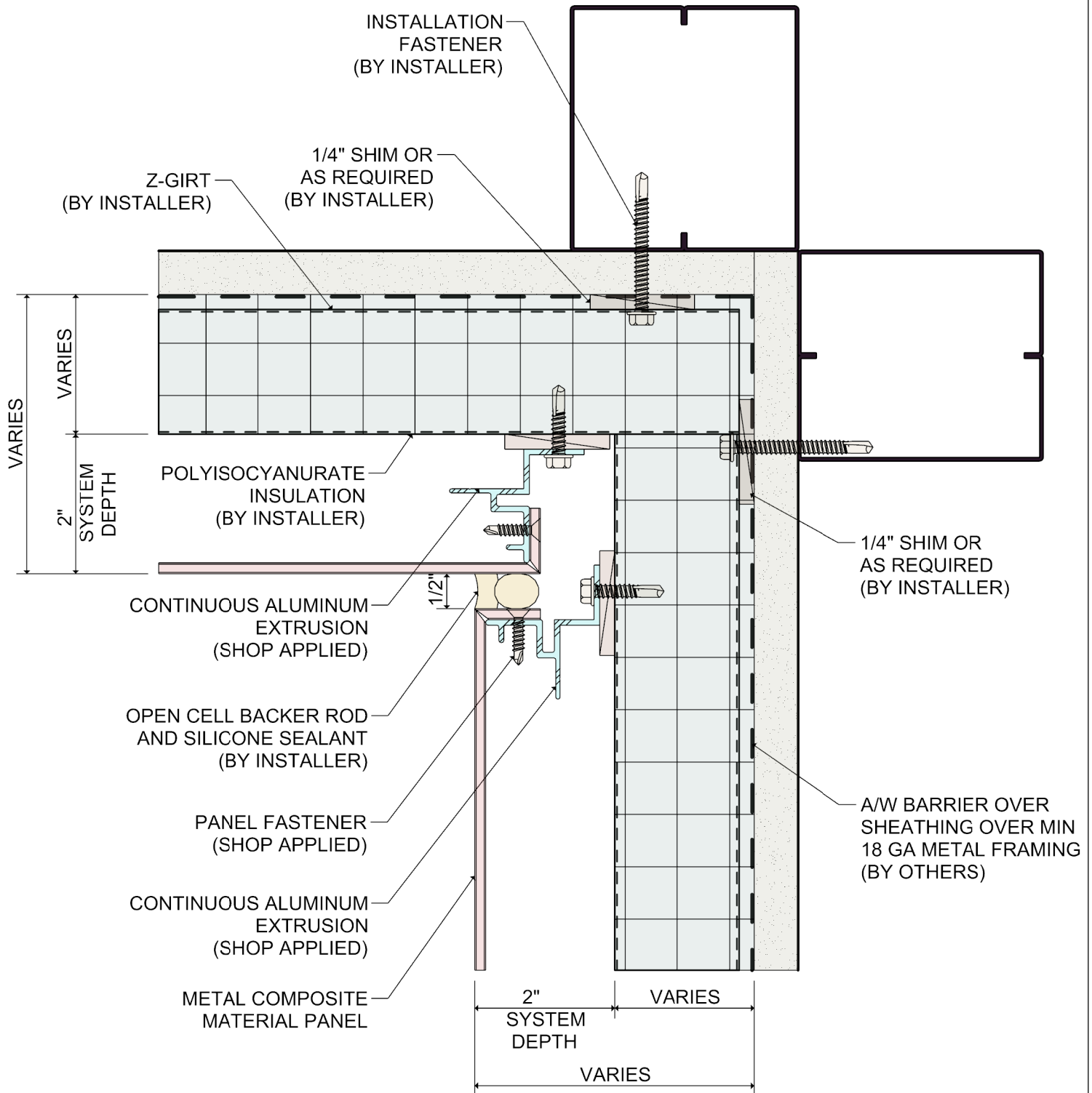
8

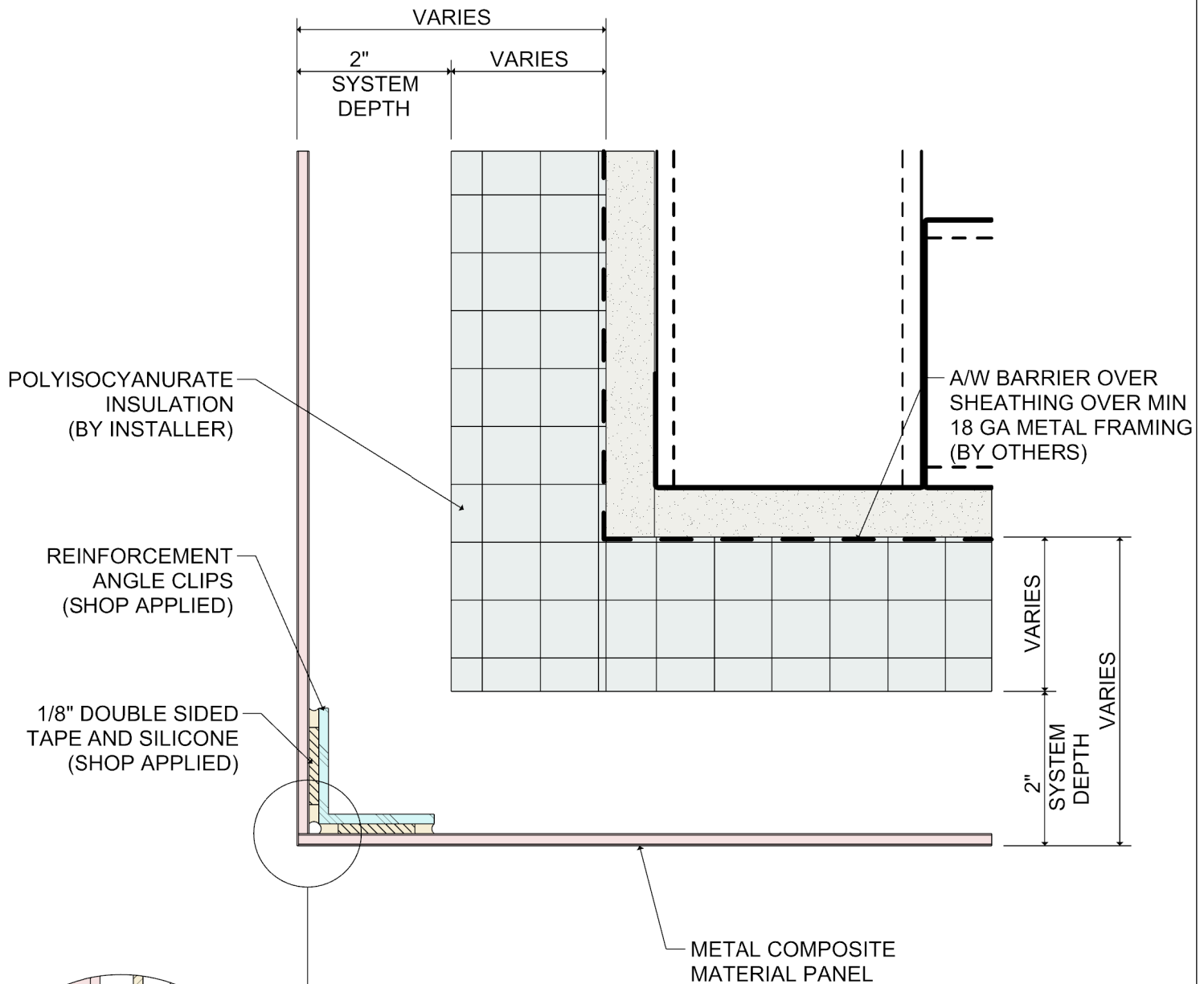
SYSTEM 1100

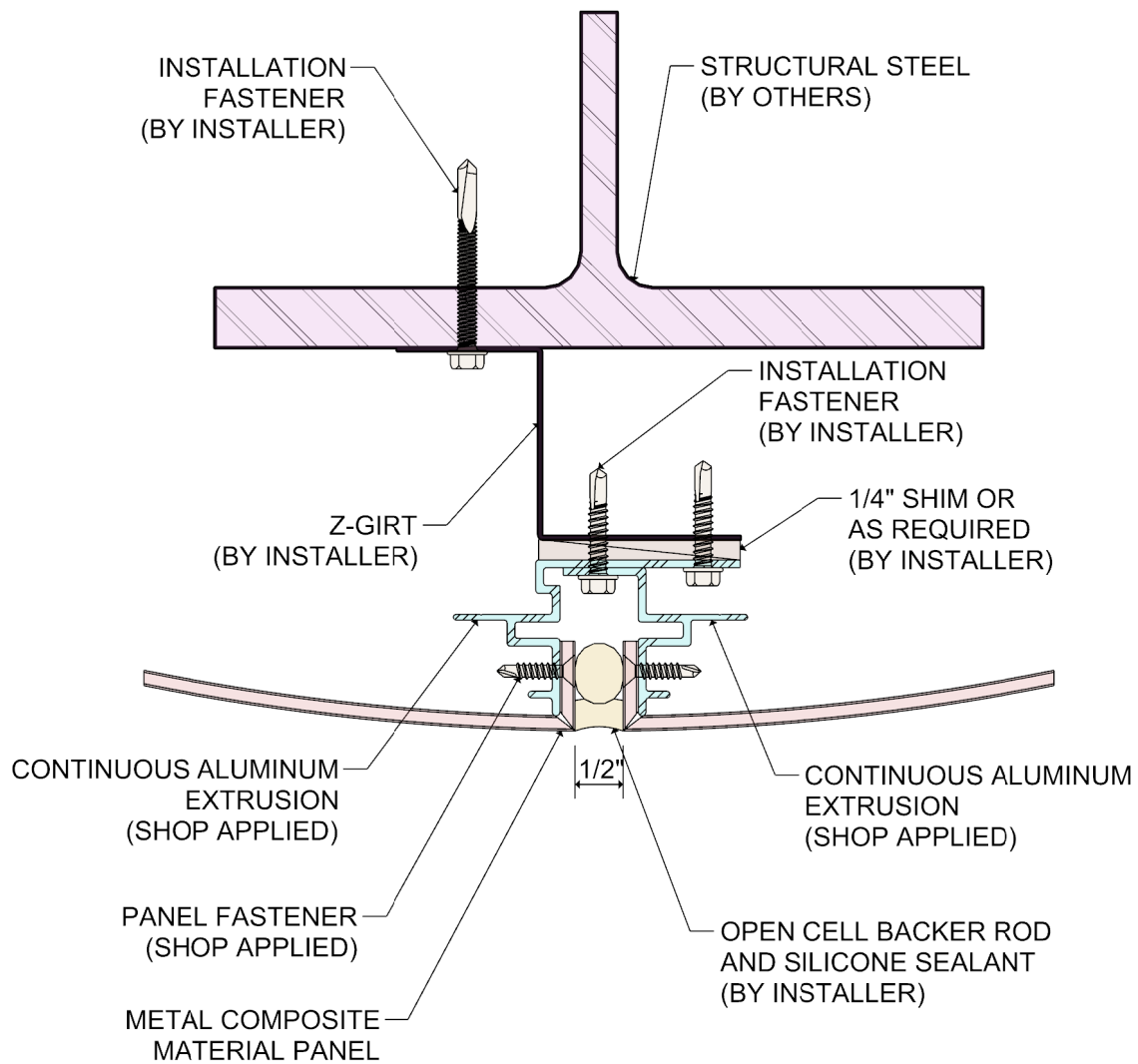
WET SEAL SYSTEM

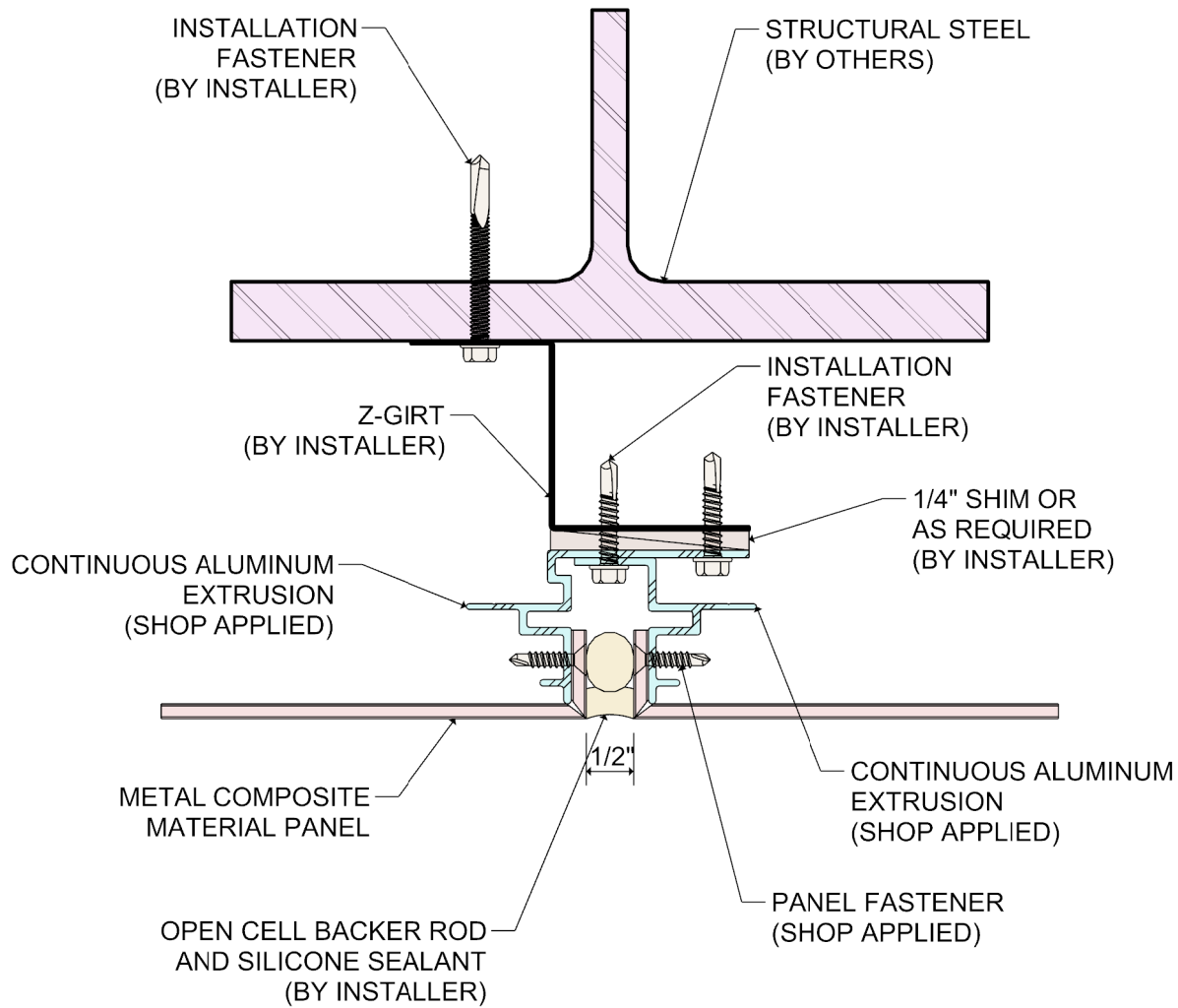
METAL COMPOSITE MATERIAL COPING DETAIL

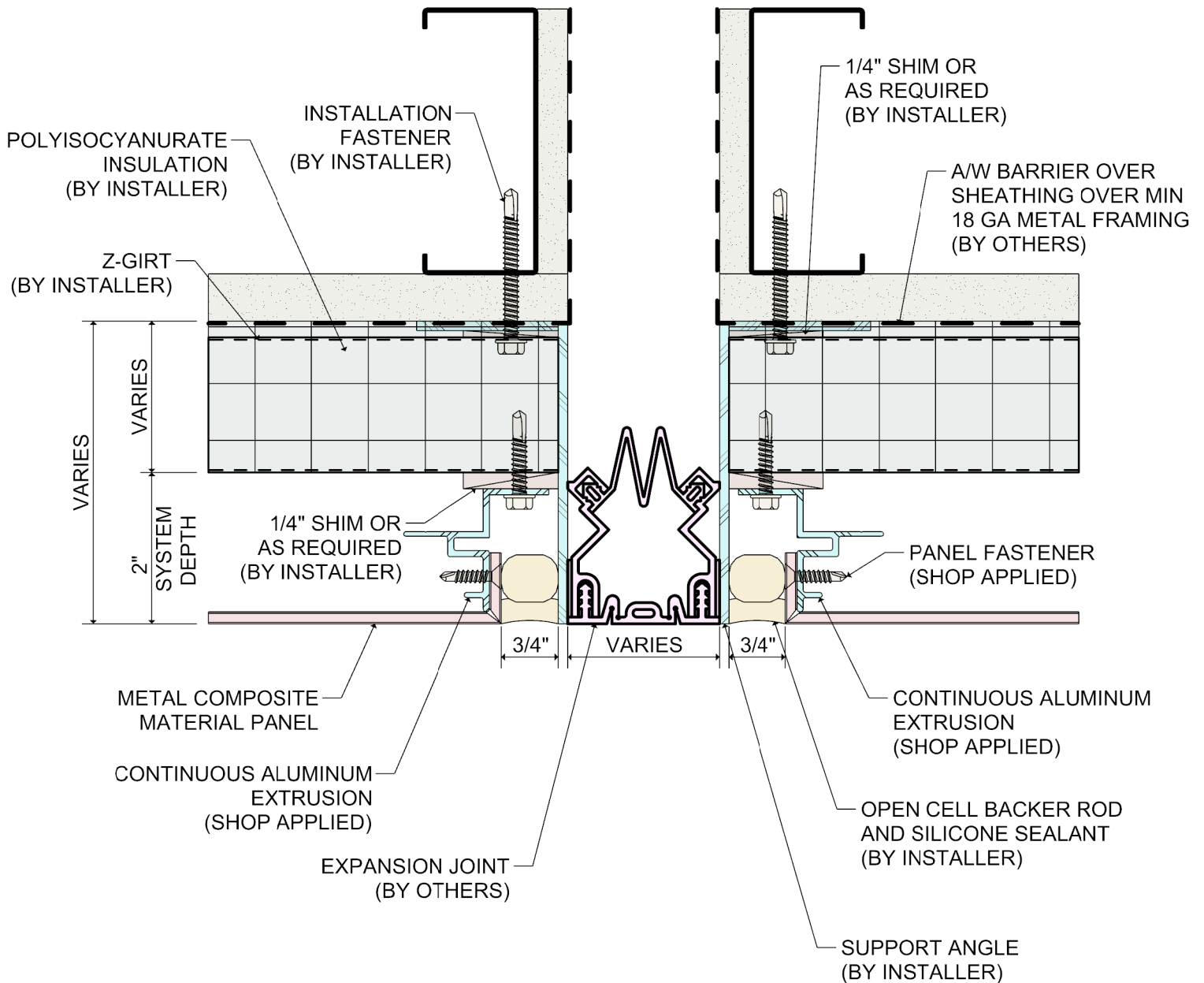




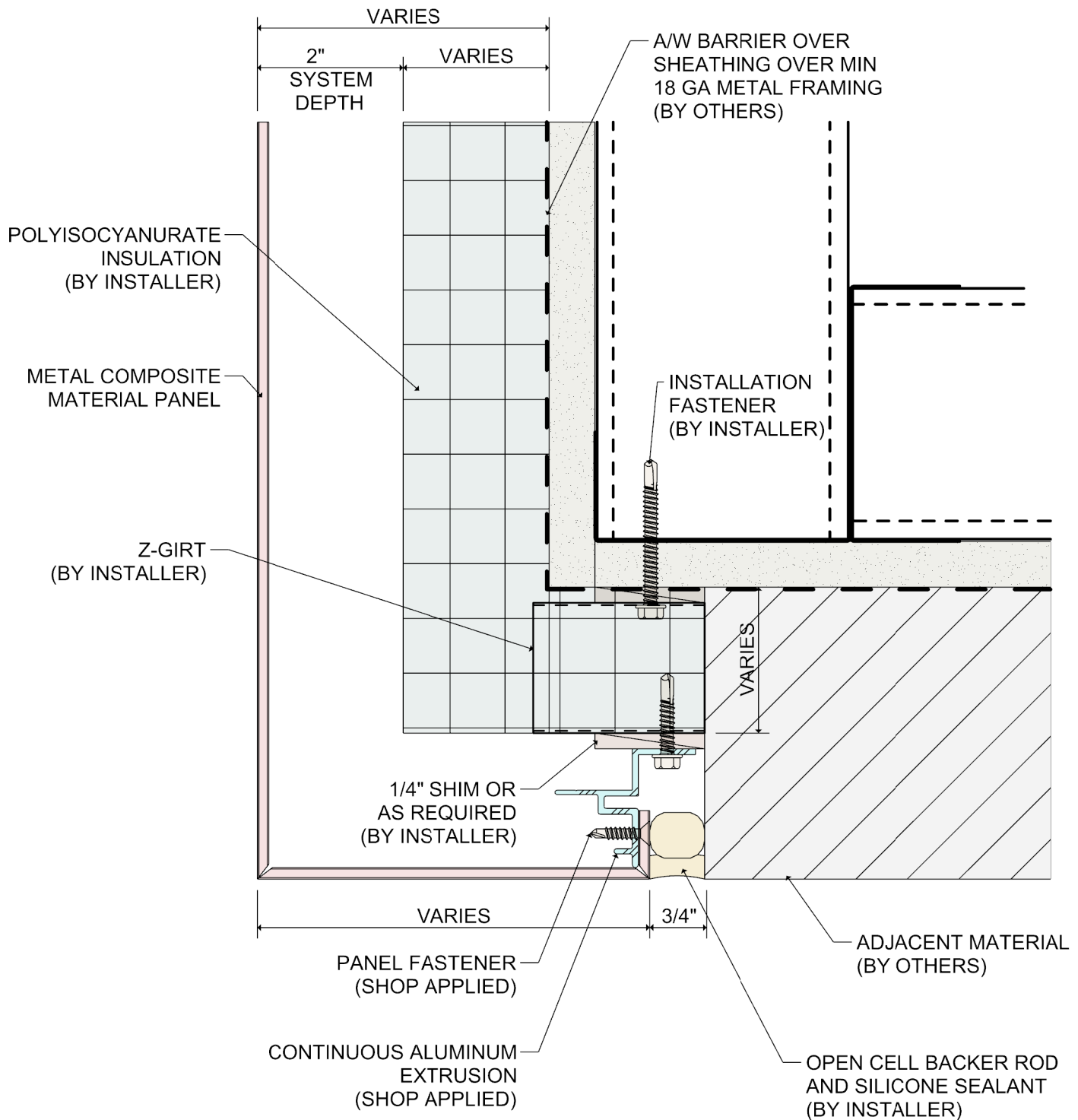


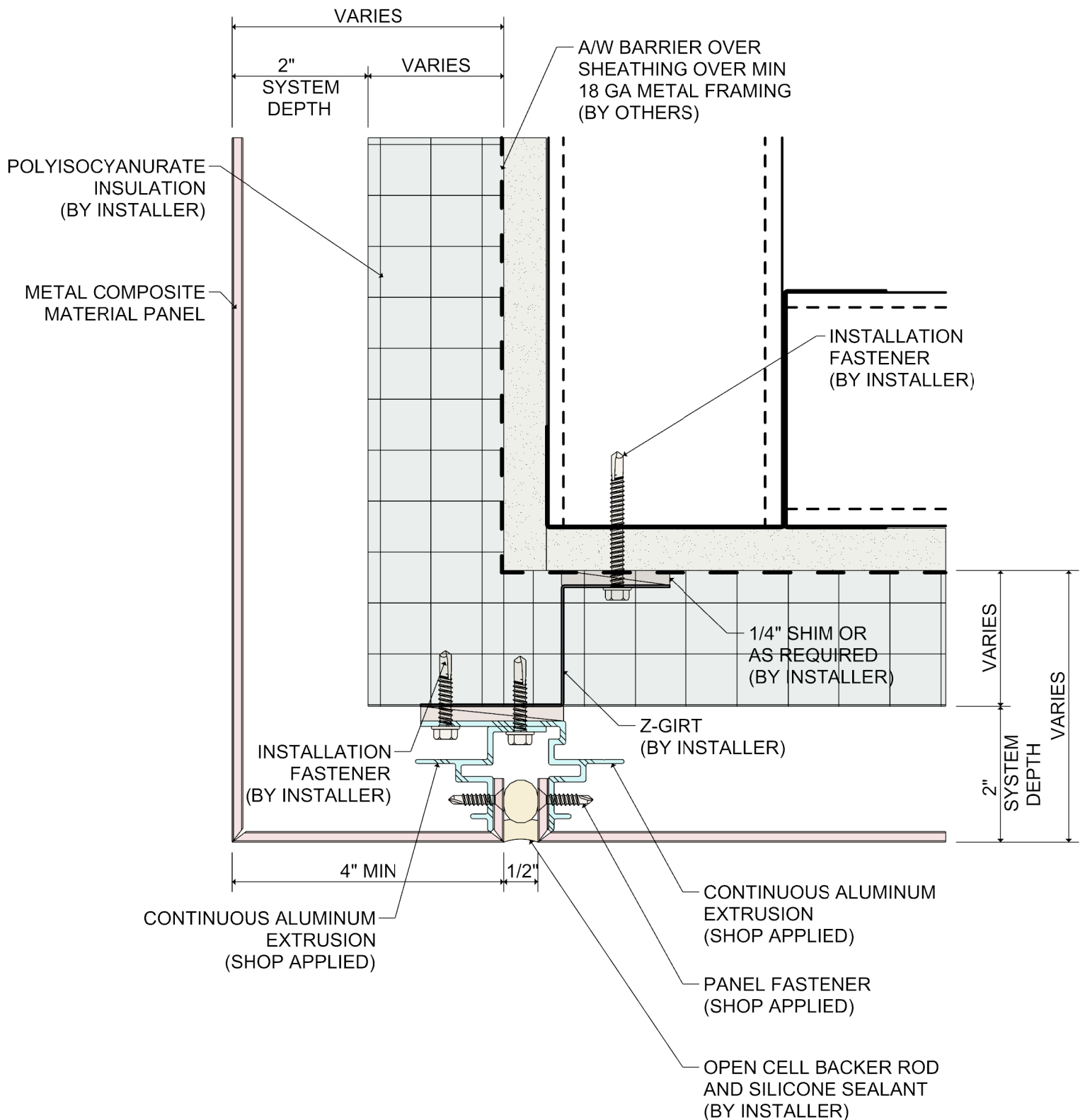


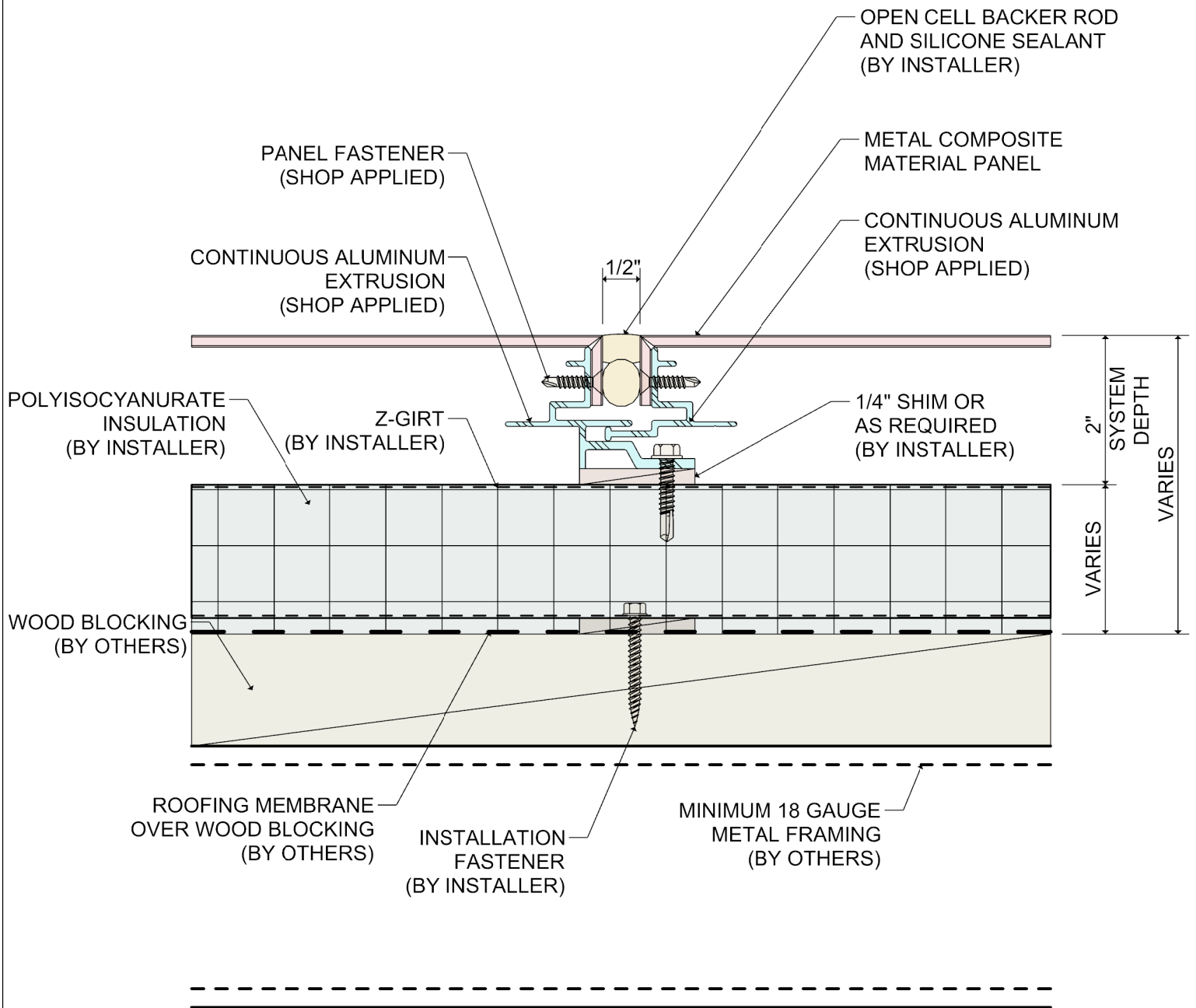


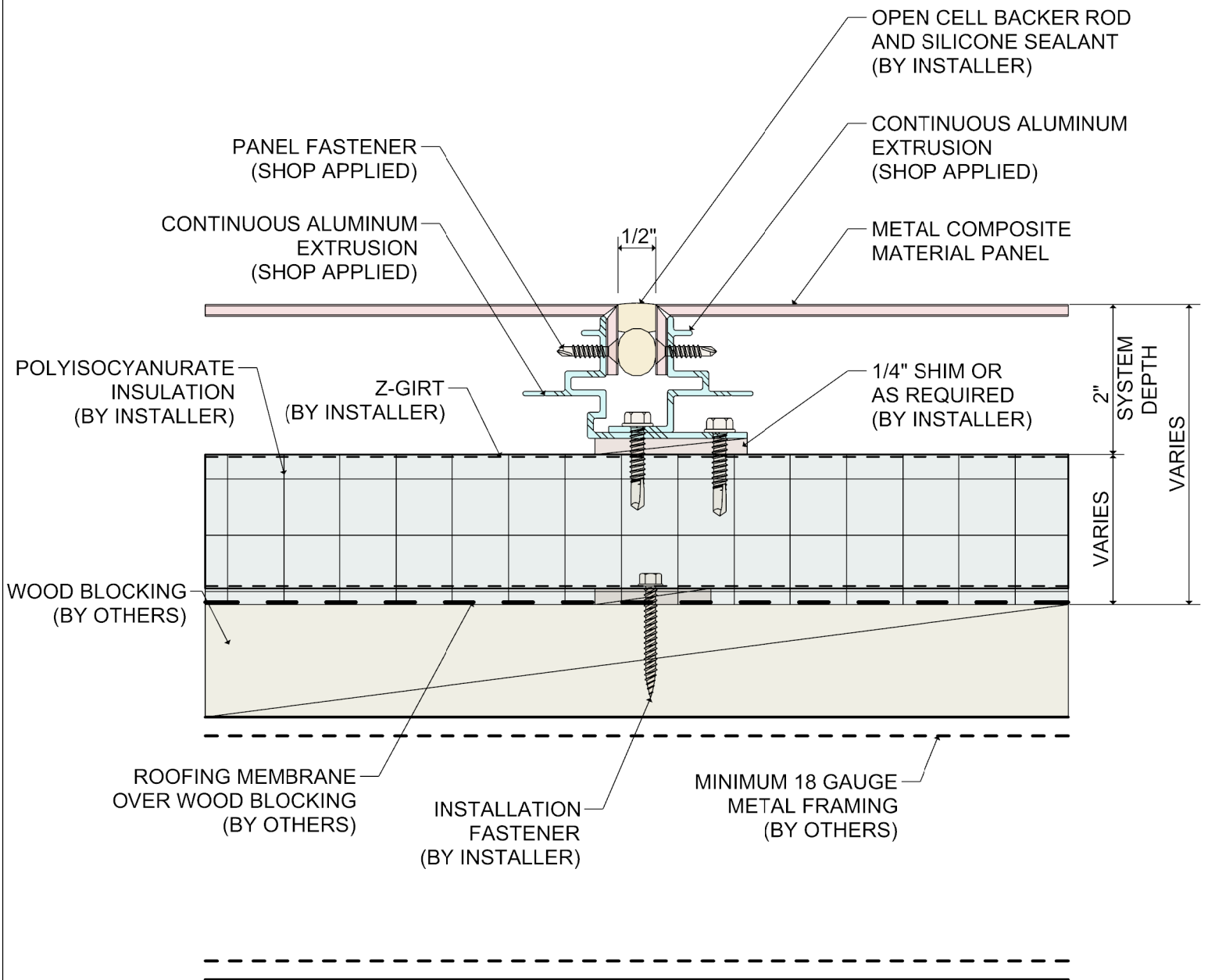












DETAIL:

16A

SYSTEM 1100

WET SEAL SYSTEM

SKYWARD FACING JOINT- HARD FASTENED

