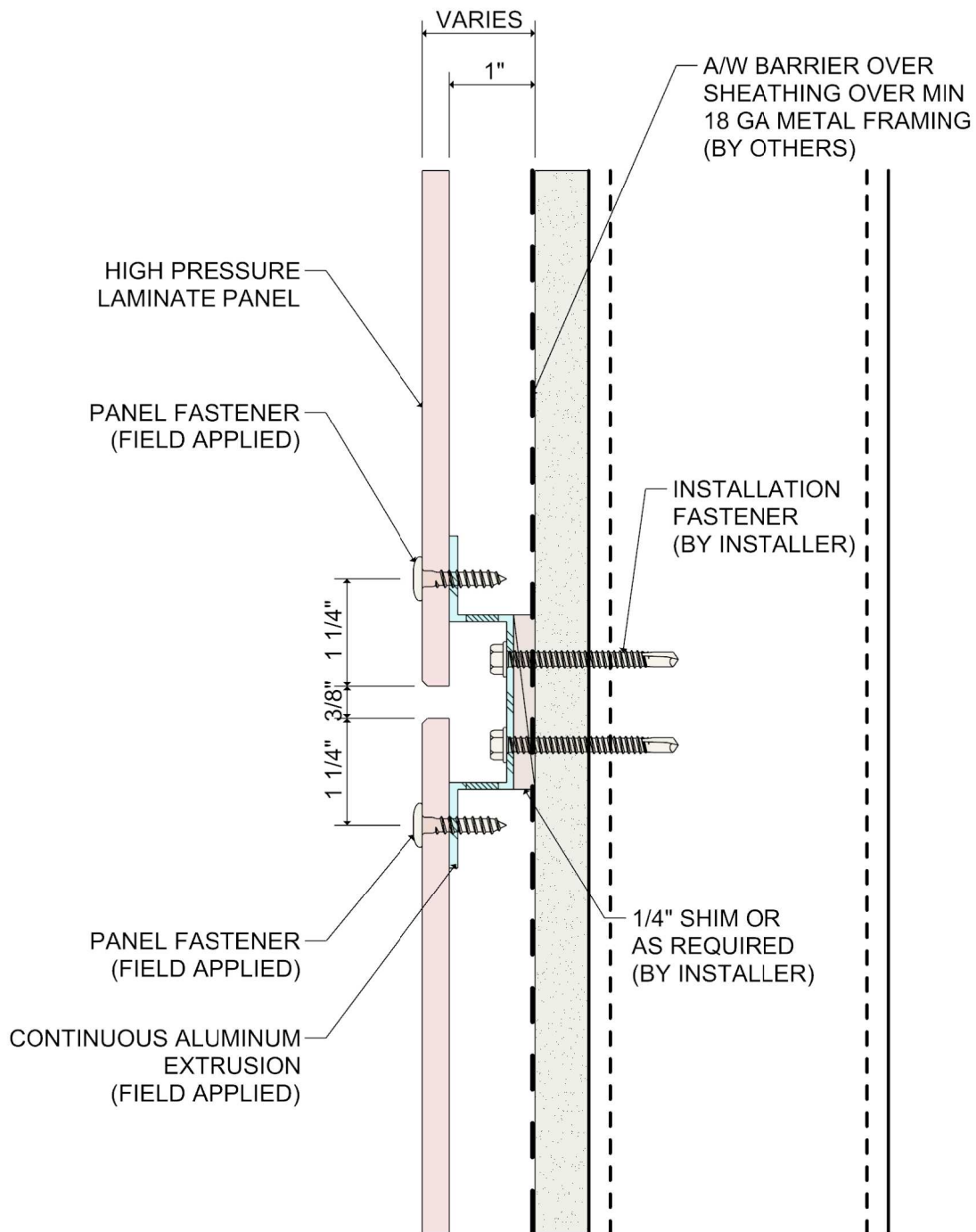


System 2000 HPL Panel Rainscreen Attachment System

Standard Details

Revised 10/2020



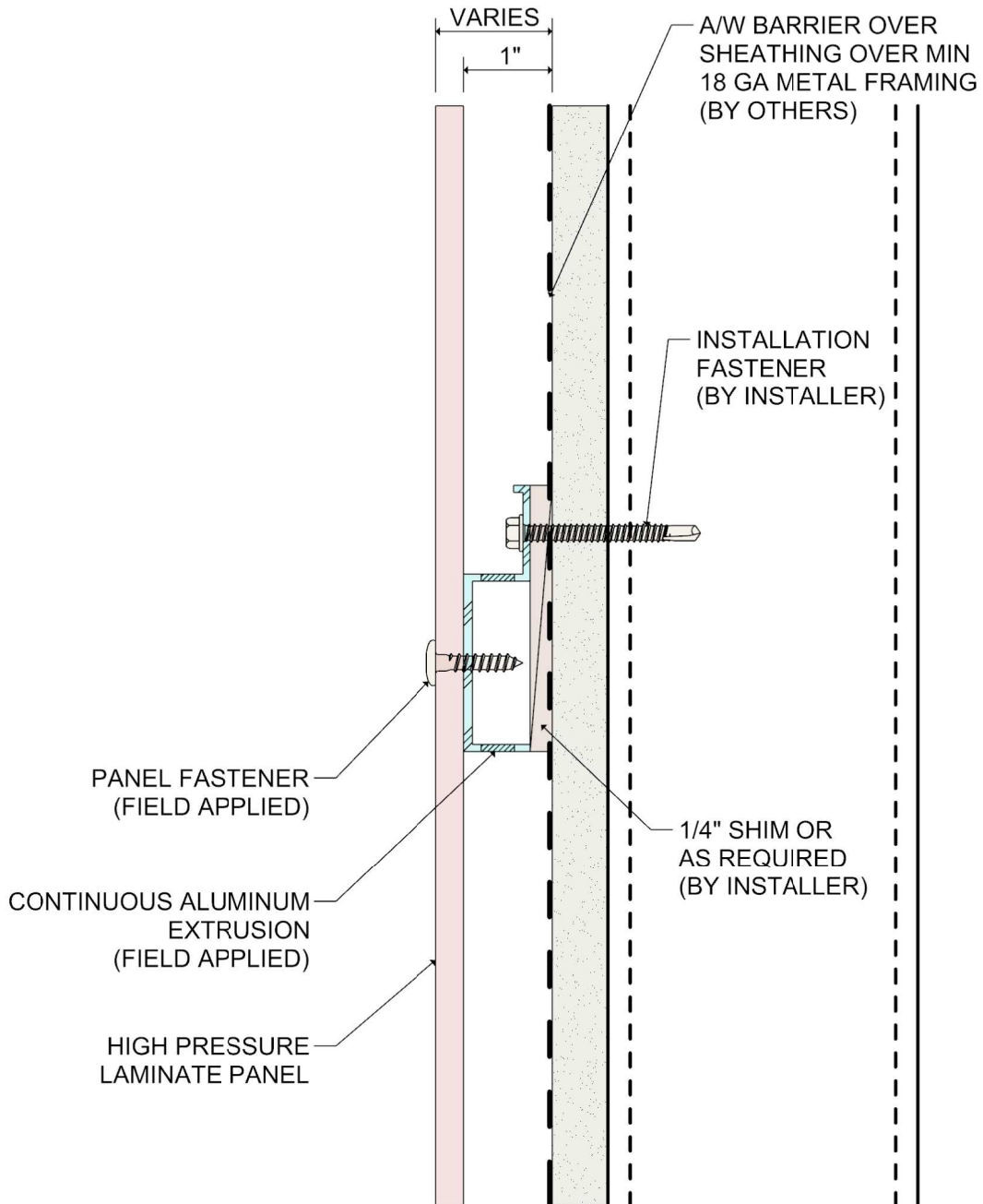
DETAIL:

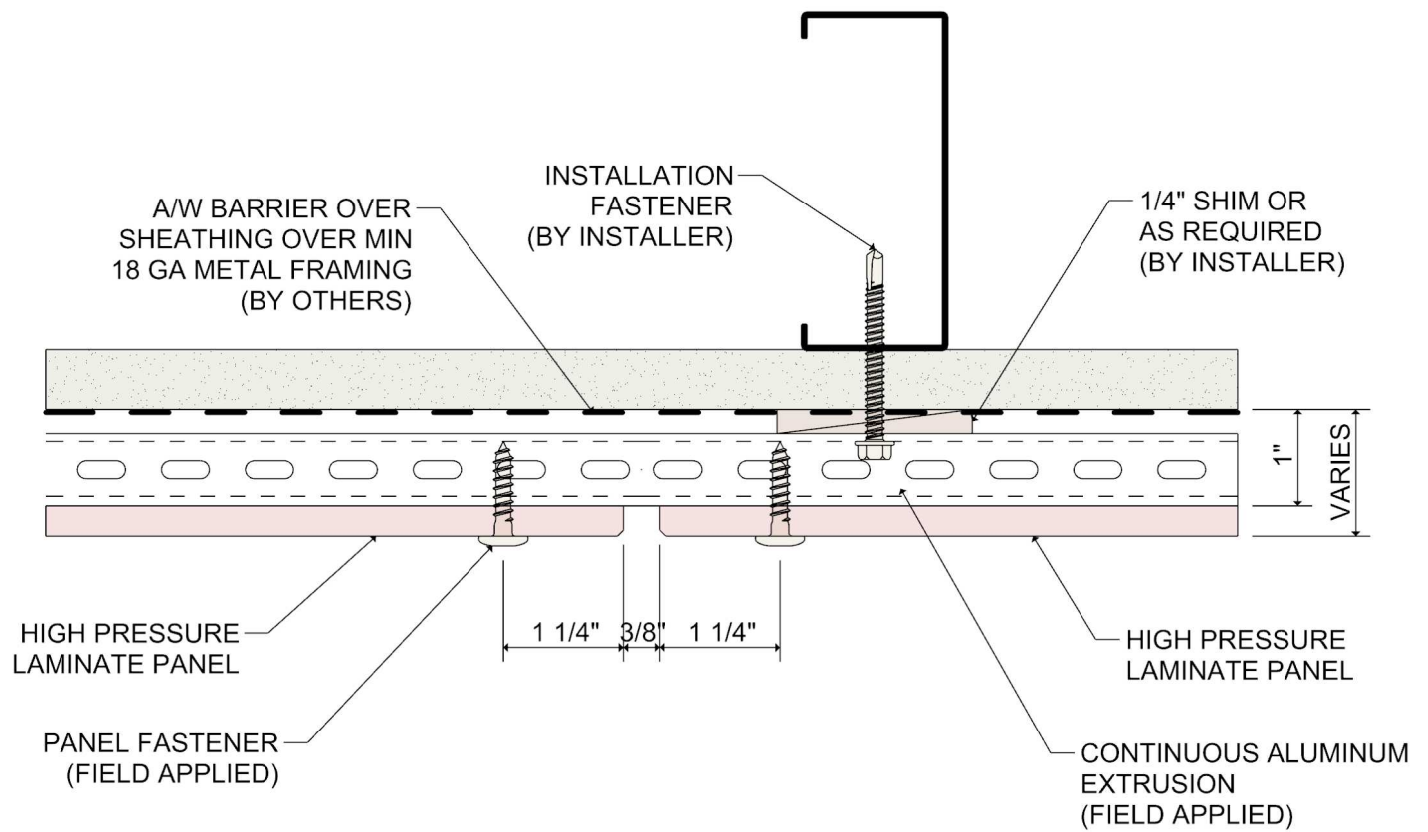
1

SYSTEM 2000

HPL RAINSCREEN

HORIZONTAL PANEL JOINT



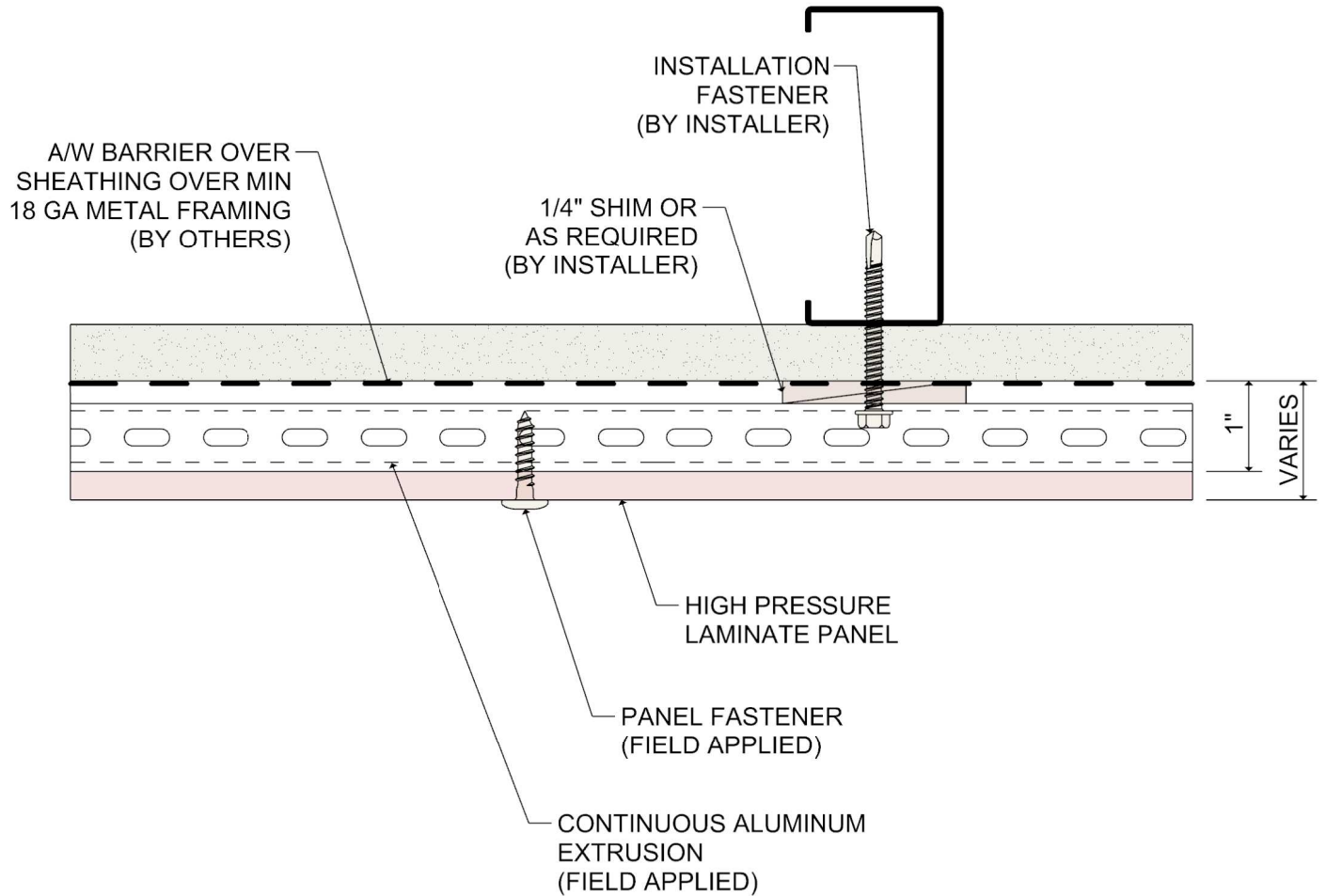


DETAIL:

3

SYSTEM 2000 HPL RAINSCREEN

VERTICAL PANEL JOINT

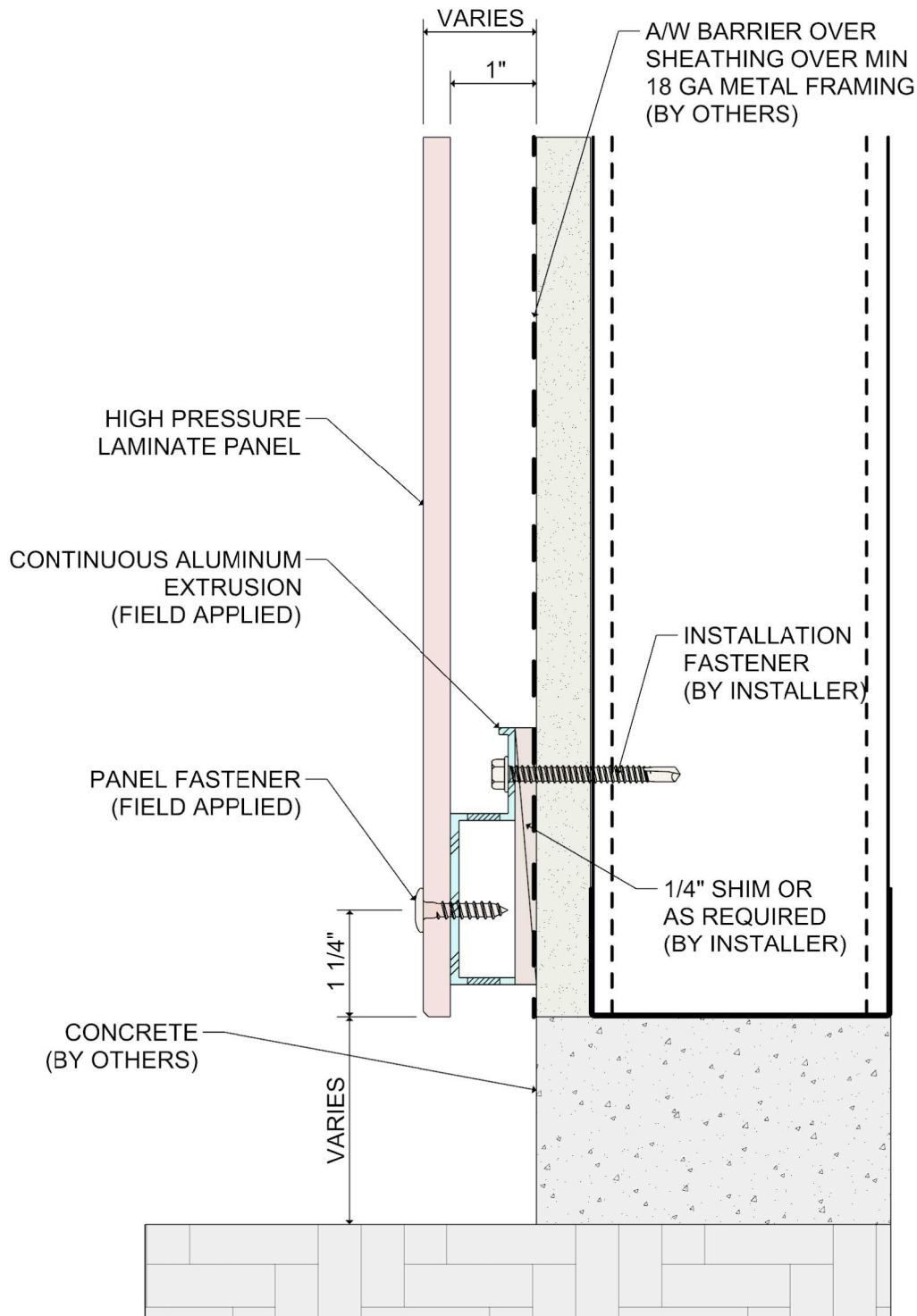


DETAIL:

4

SYSTEM 2000 HPL RAINSCREEN

VERTICAL MID PANEL DETAIL

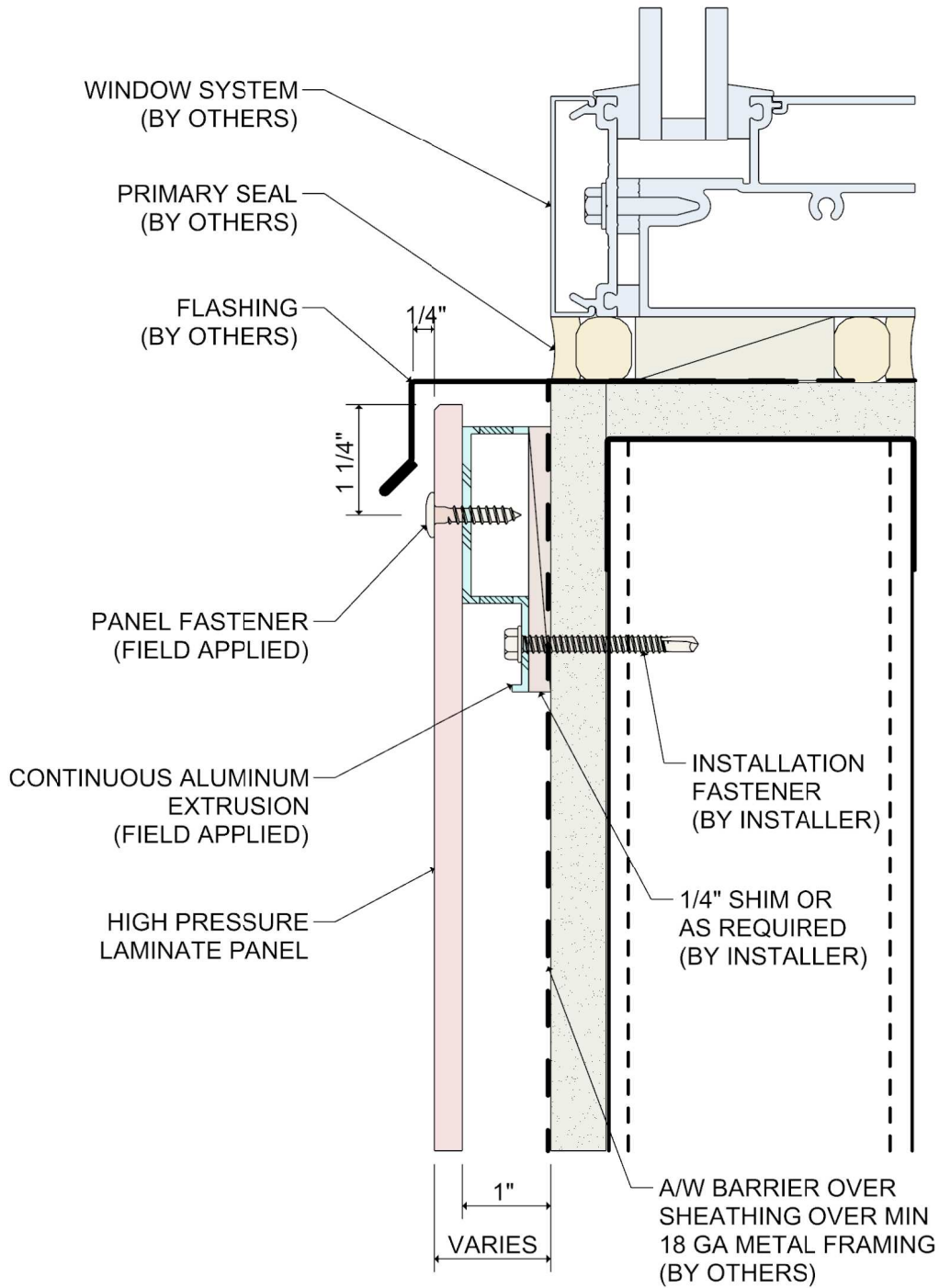


DETAIL:

5

SYSTEM 2000 HPL RAINSCREEN

BASE OF WALL DETAIL



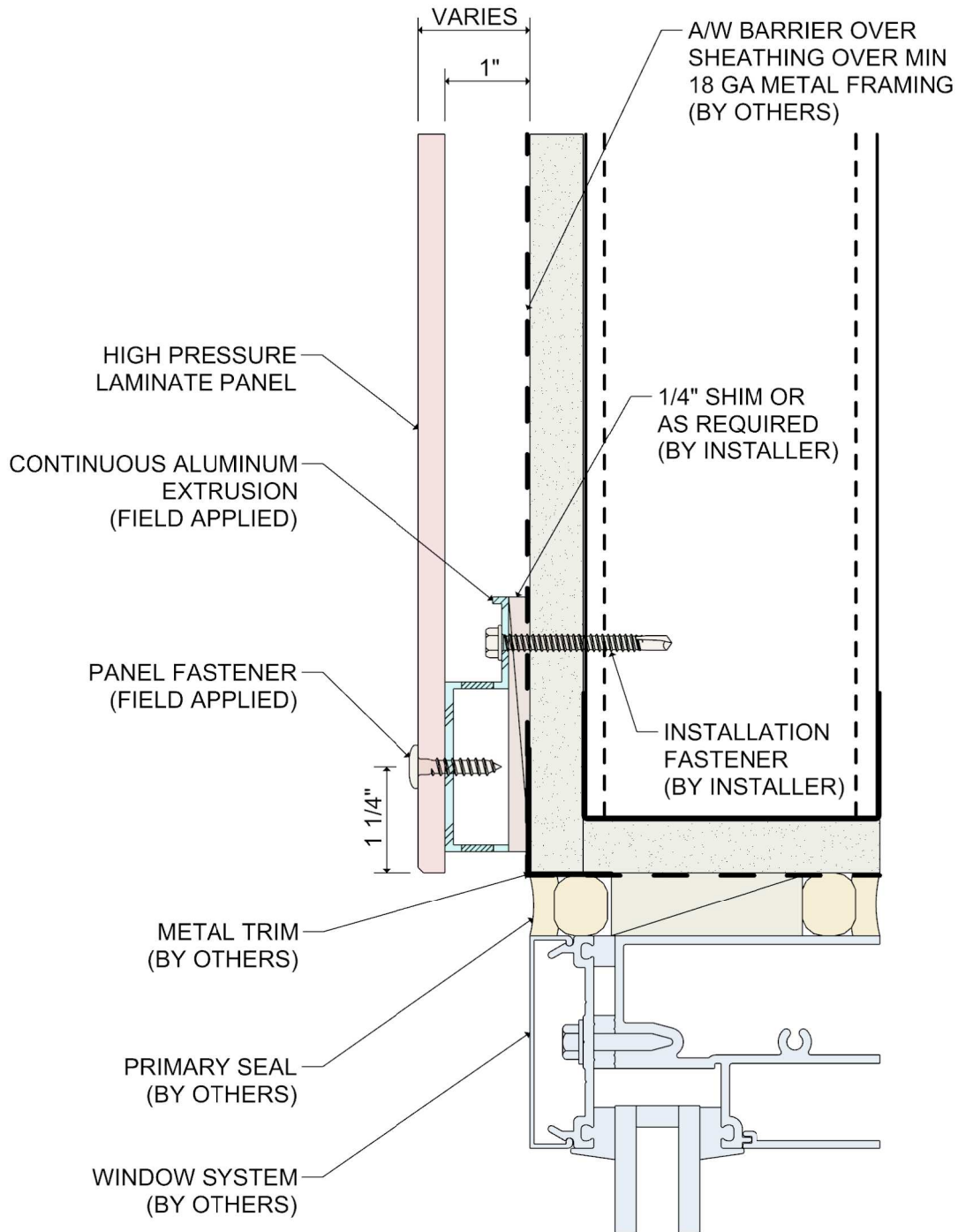
DETAIL:

SYSTEM 2000

HPL RAINSCREEN

6

WINDOW SILL DETAIL



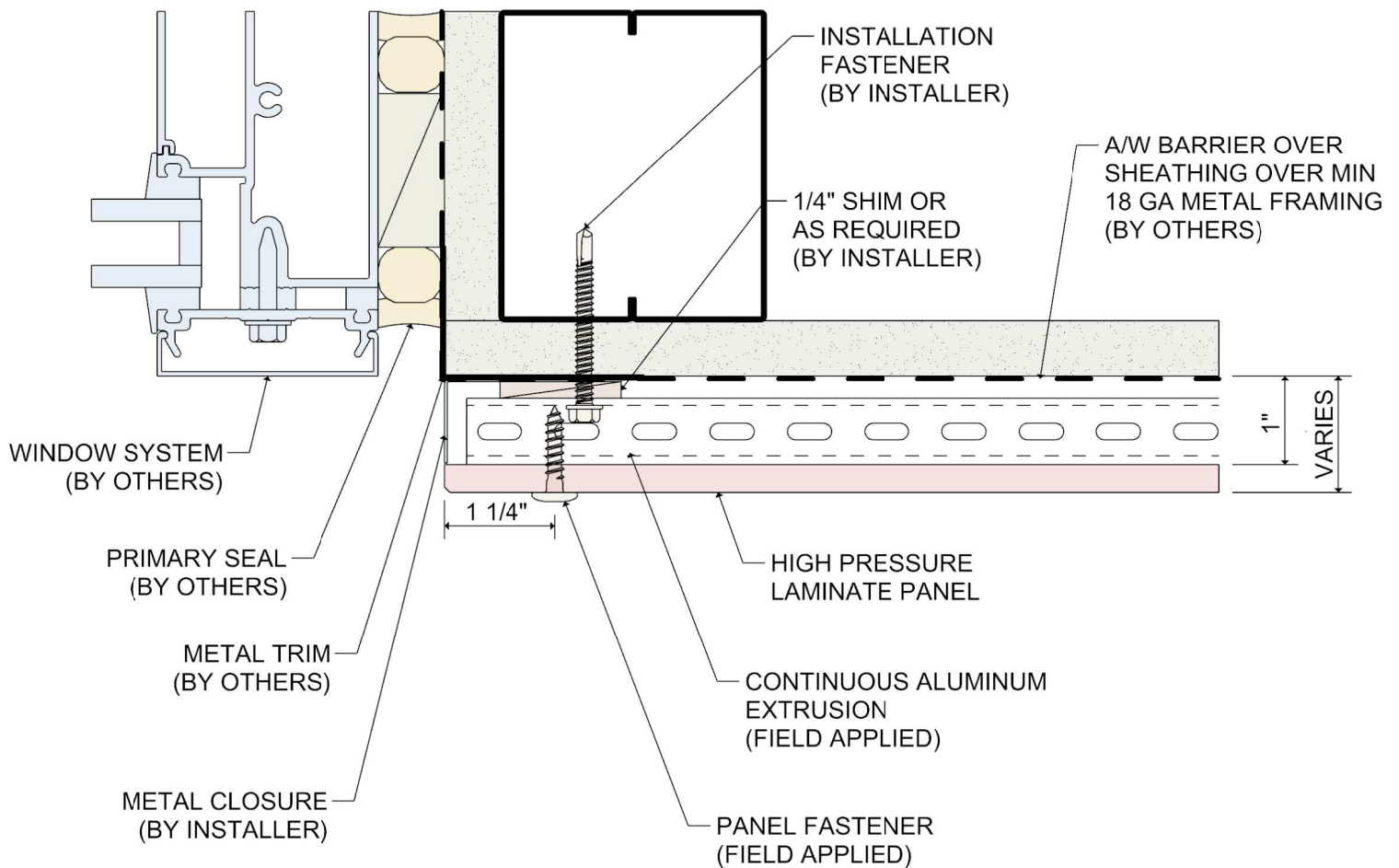
DETAIL:

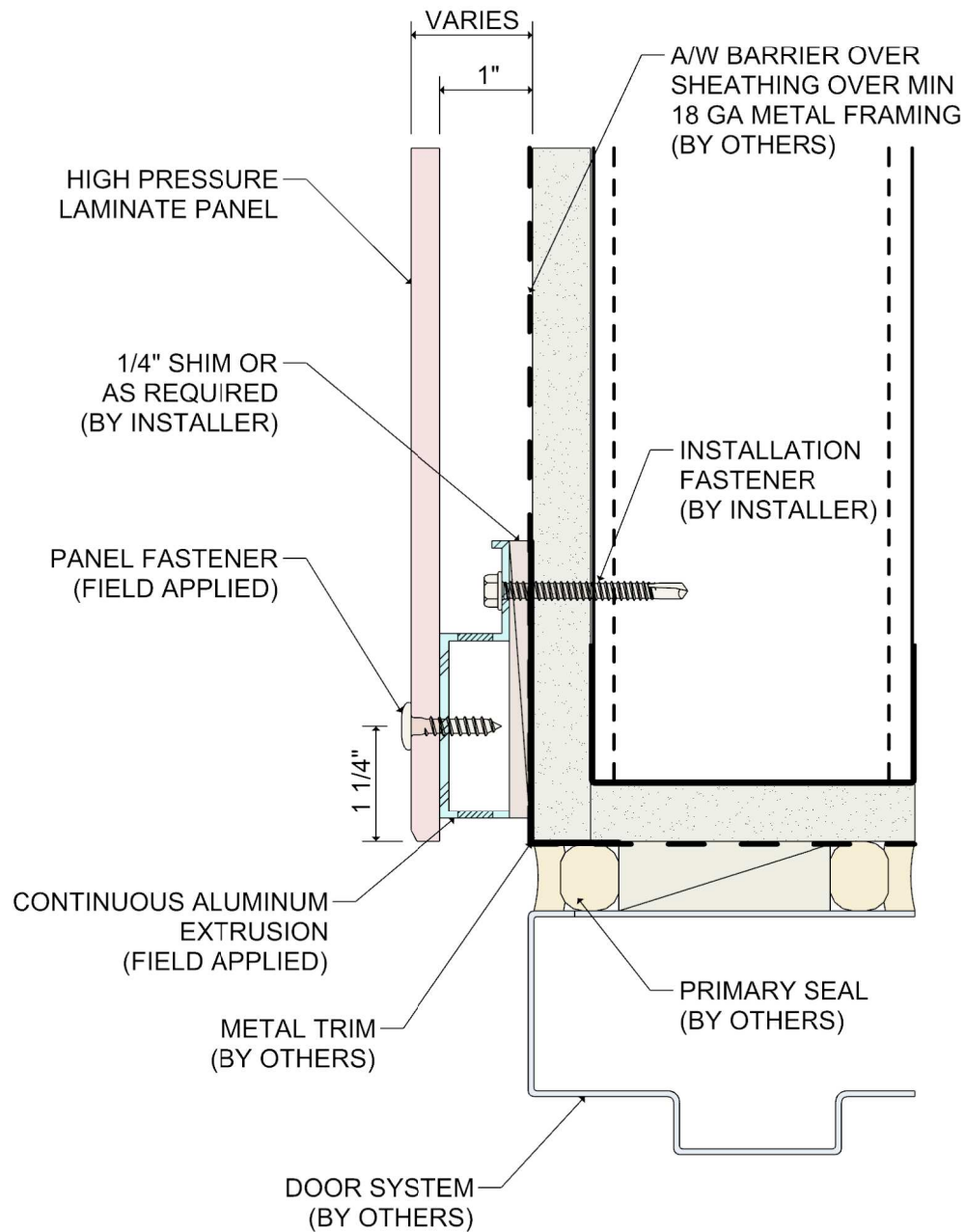
7

SYSTEM 2000

HPL RAINSCREEN

WINDOW HEAD DETAIL





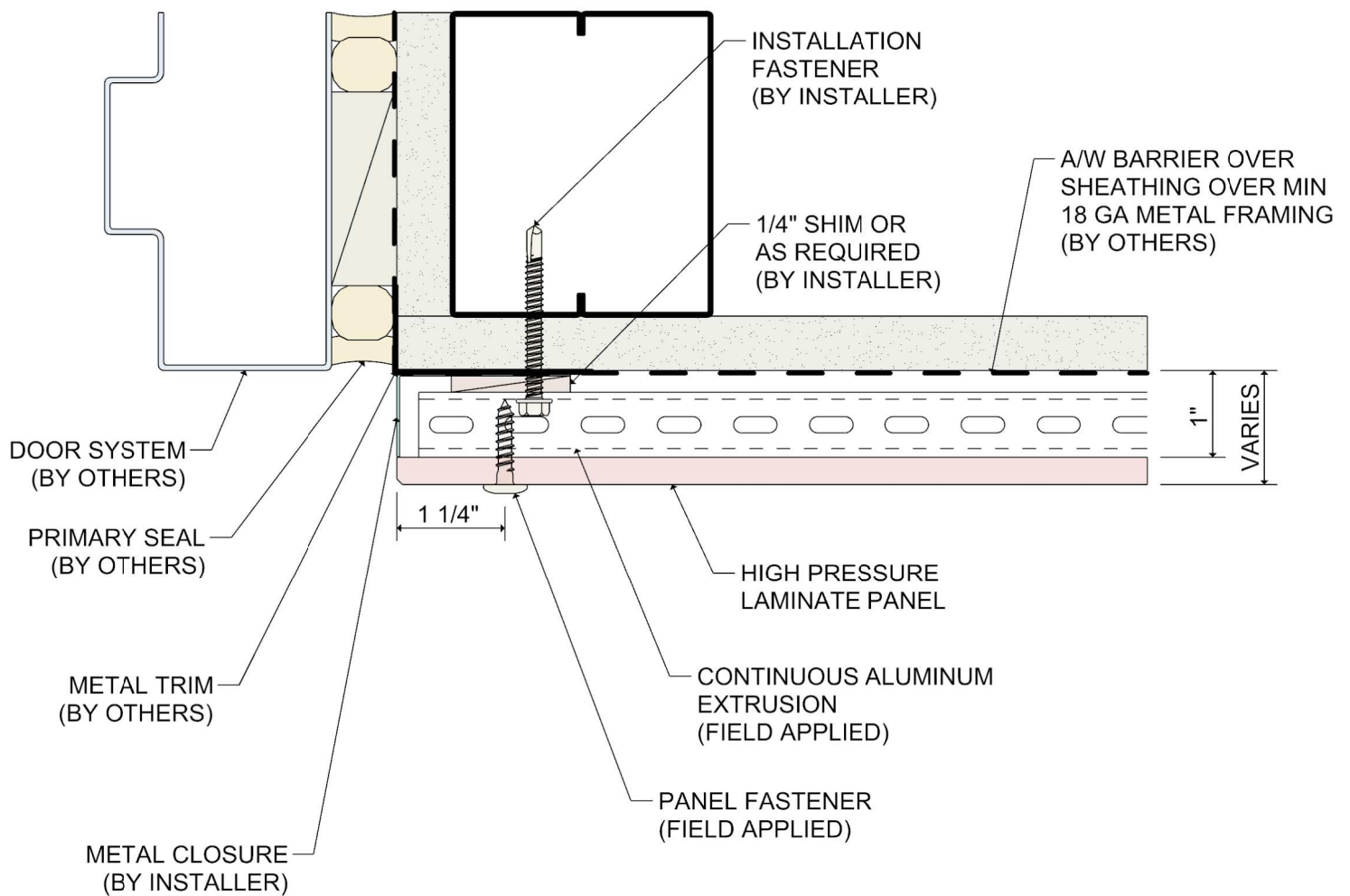
DETAIL:

SYSTEM 2000

HPL RAINSCREEN

9

DOOR HEAD DETAIL



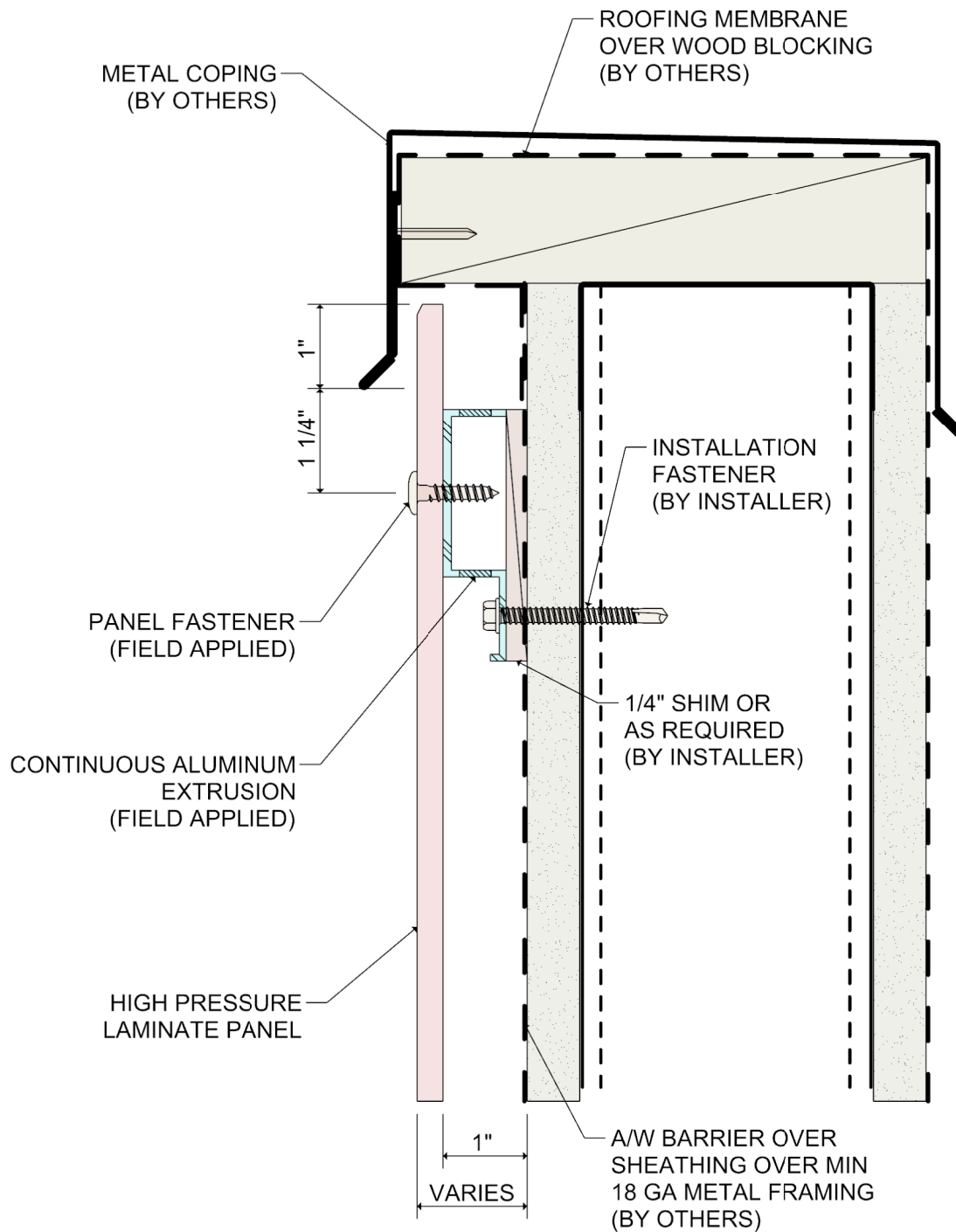
DETAIL:

SYSTEM 2000

HPL RAINSCREEN

10

TERMINATION AT DOOR JAMB



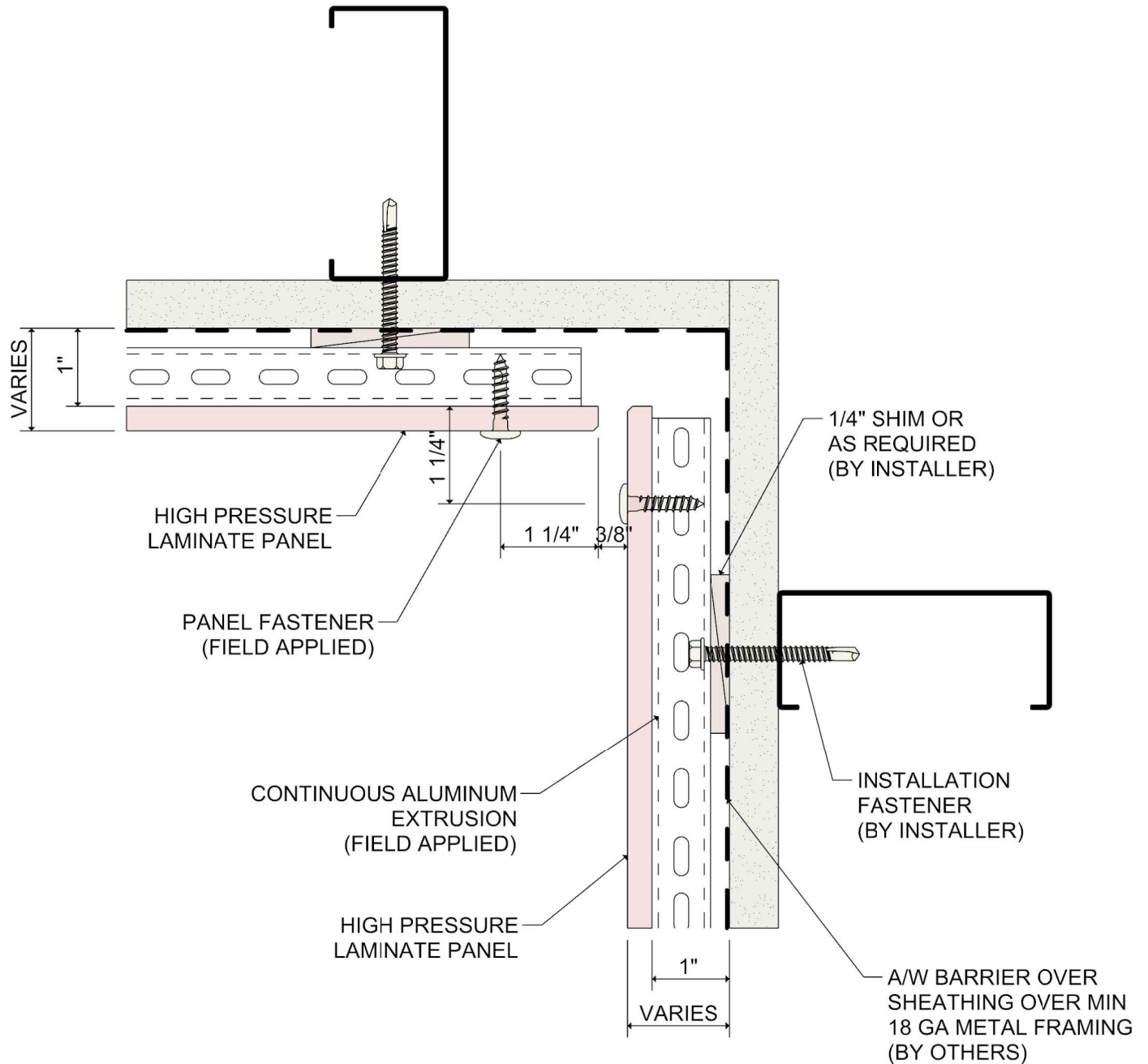
DETAIL:

SYSTEM 2000

HPL RAINSCREEN

11

TERMINATION AT PARAPET CAP



DETAIL:

12

SYSTEM 2000

HPL RAINSCREEN

INSIDE CORNER

