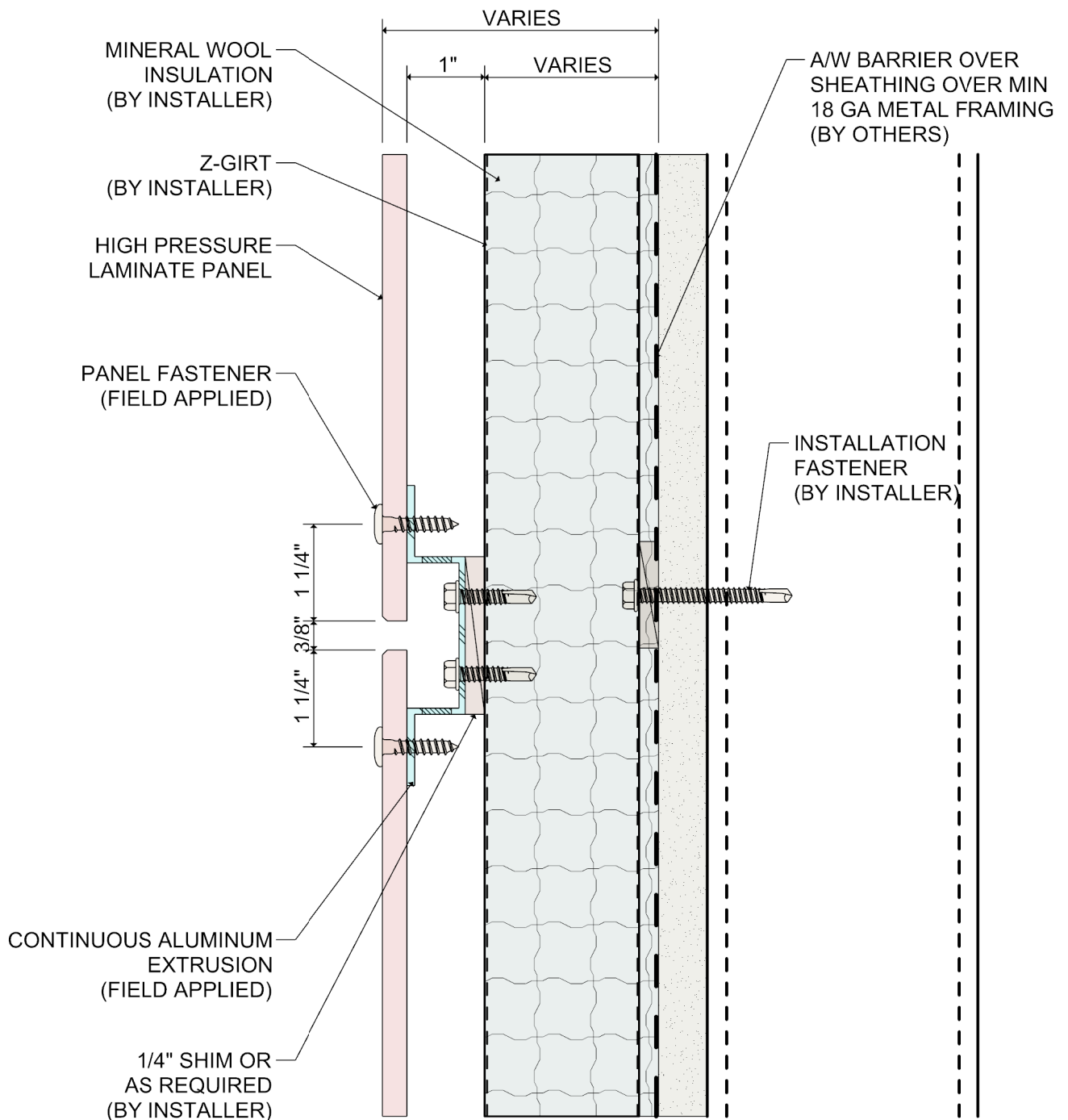


System 2000 HPL Panel Rainscreen Attachment System with Mineral Wool Insulation

Standard Details

Revised 11/2020



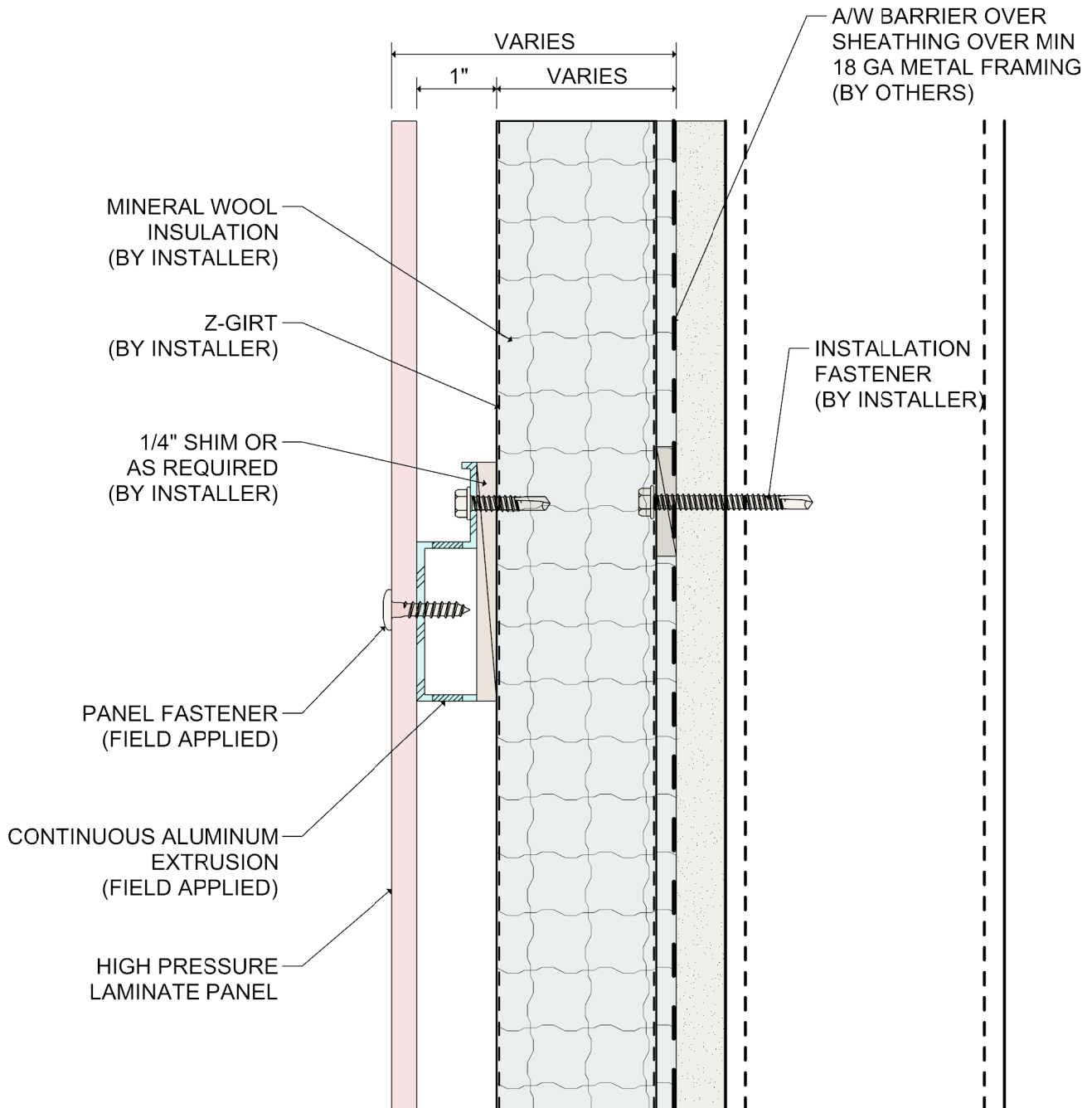
DETAIL:

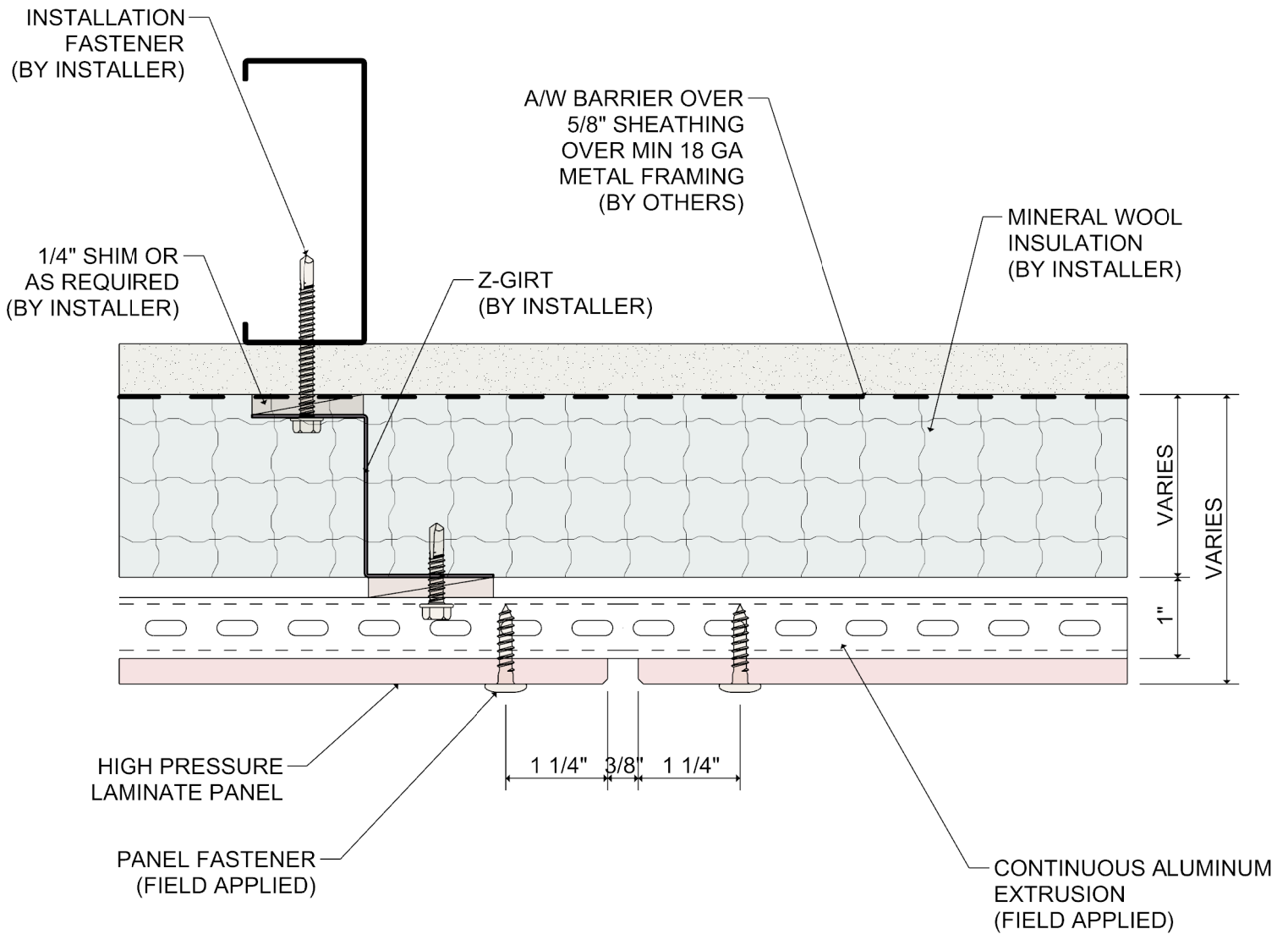
1

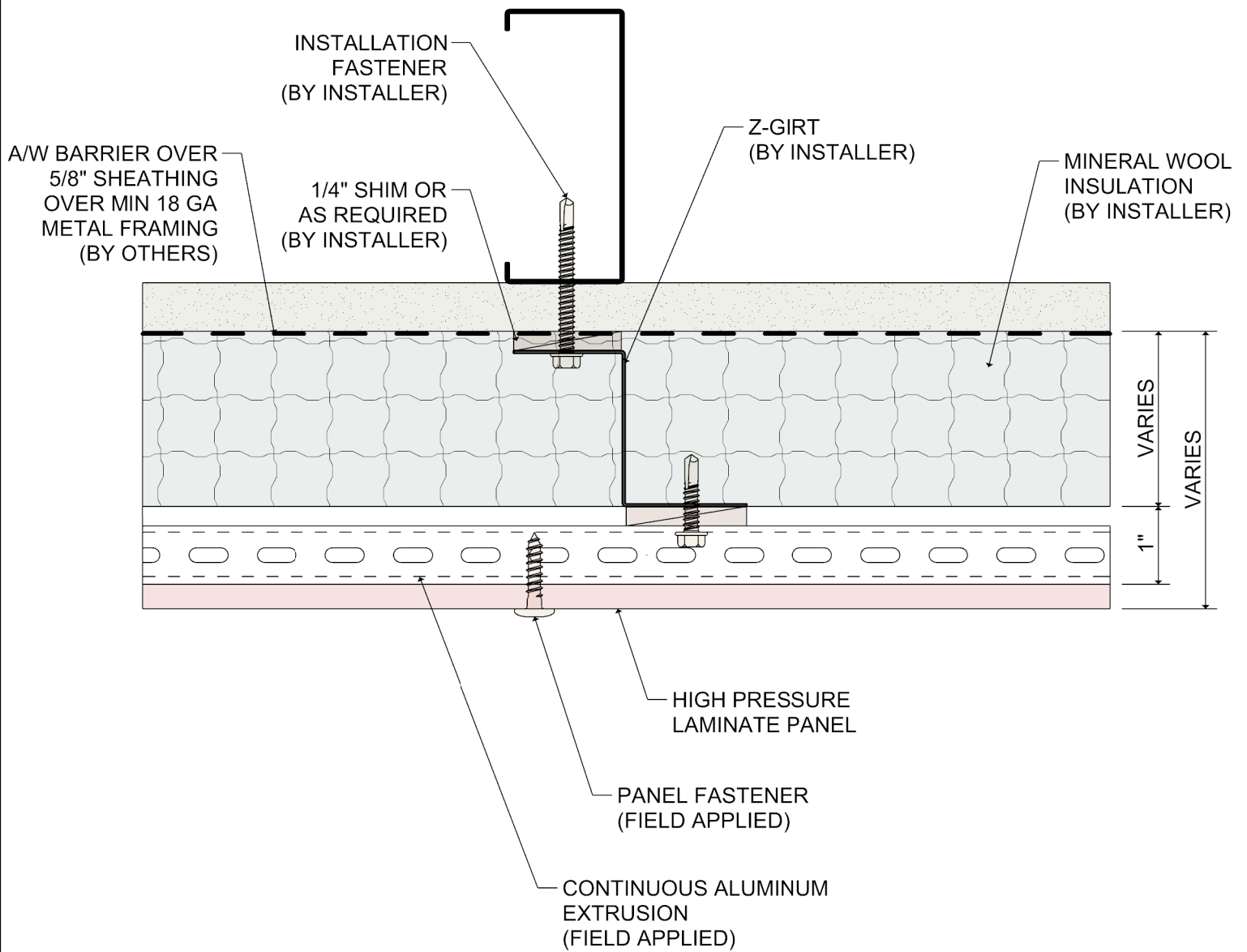
SYSTEM 2000

HPL RAINSCREEN

HORIZONTAL PANEL JOINT







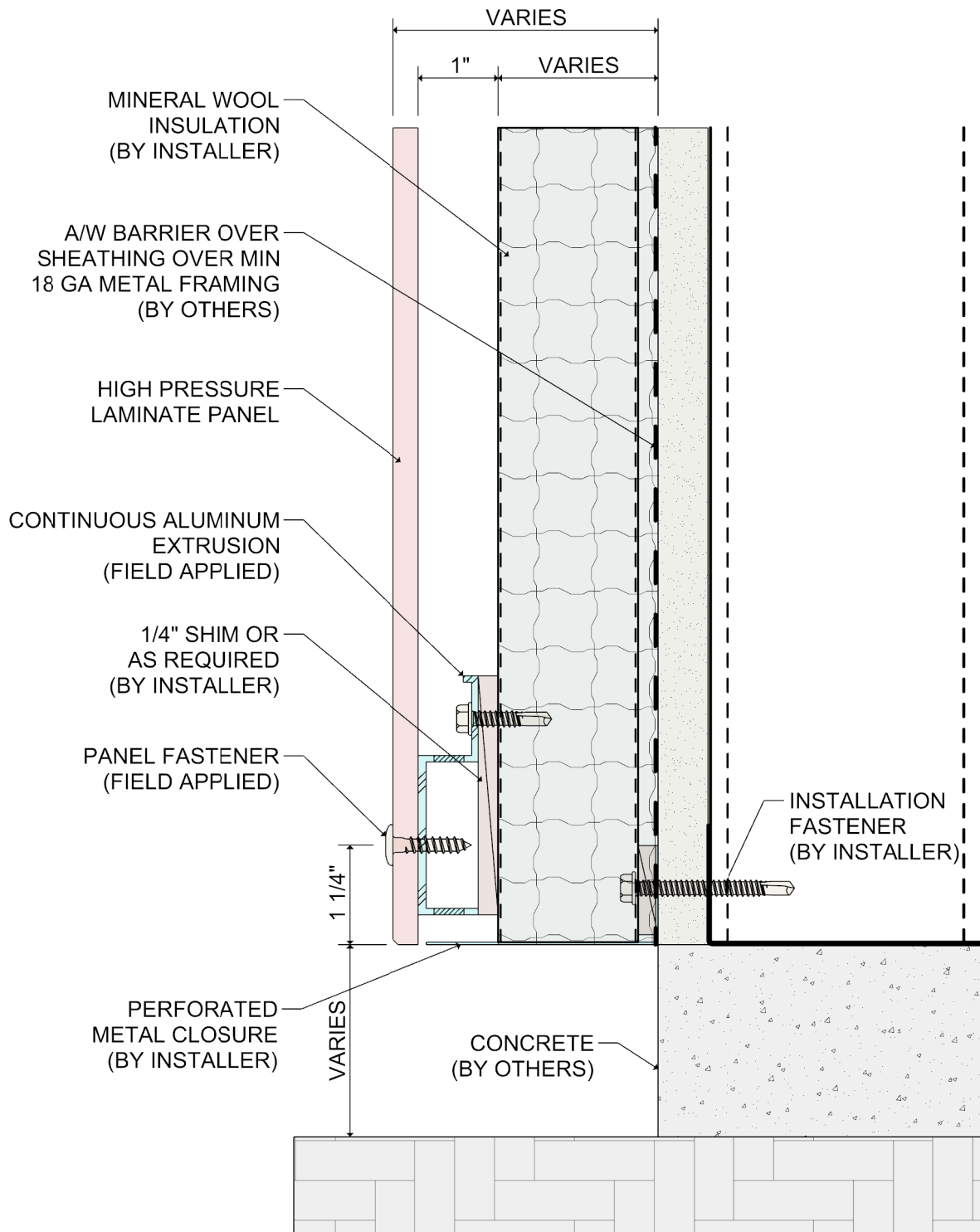
DETAIL:

4

SYSTEM 2000

HPL RAINSCREEN

VERTICAL MID PANEL DETAIL



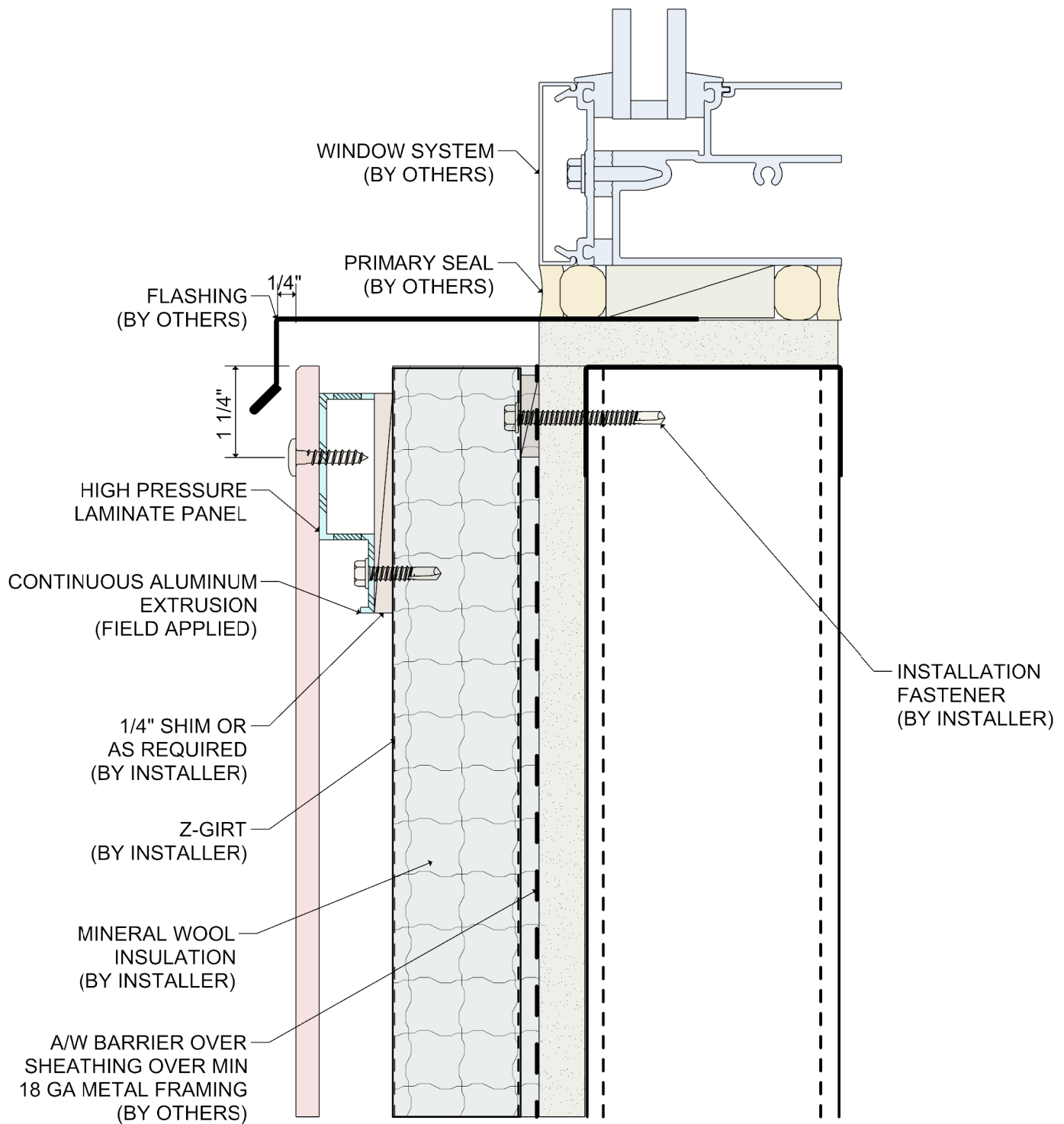
DETAIL:

SYSTEM 2000

HPL RAINSCREEN

5

BASE OF WALL DETAIL

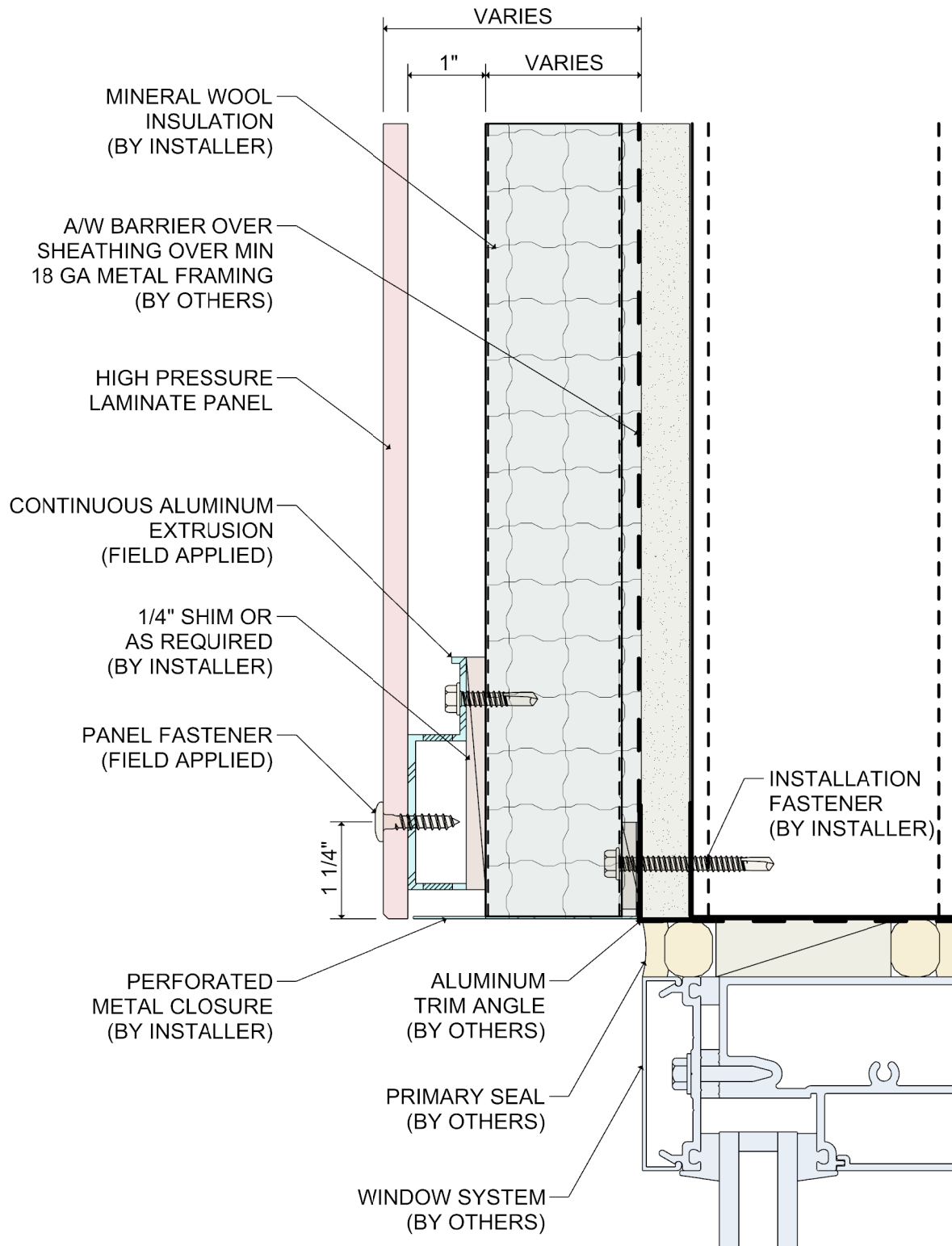


DETAIL:

6

SYSTEM 2000 HPL RAINSCREEN

WINDOW SILL DETAIL



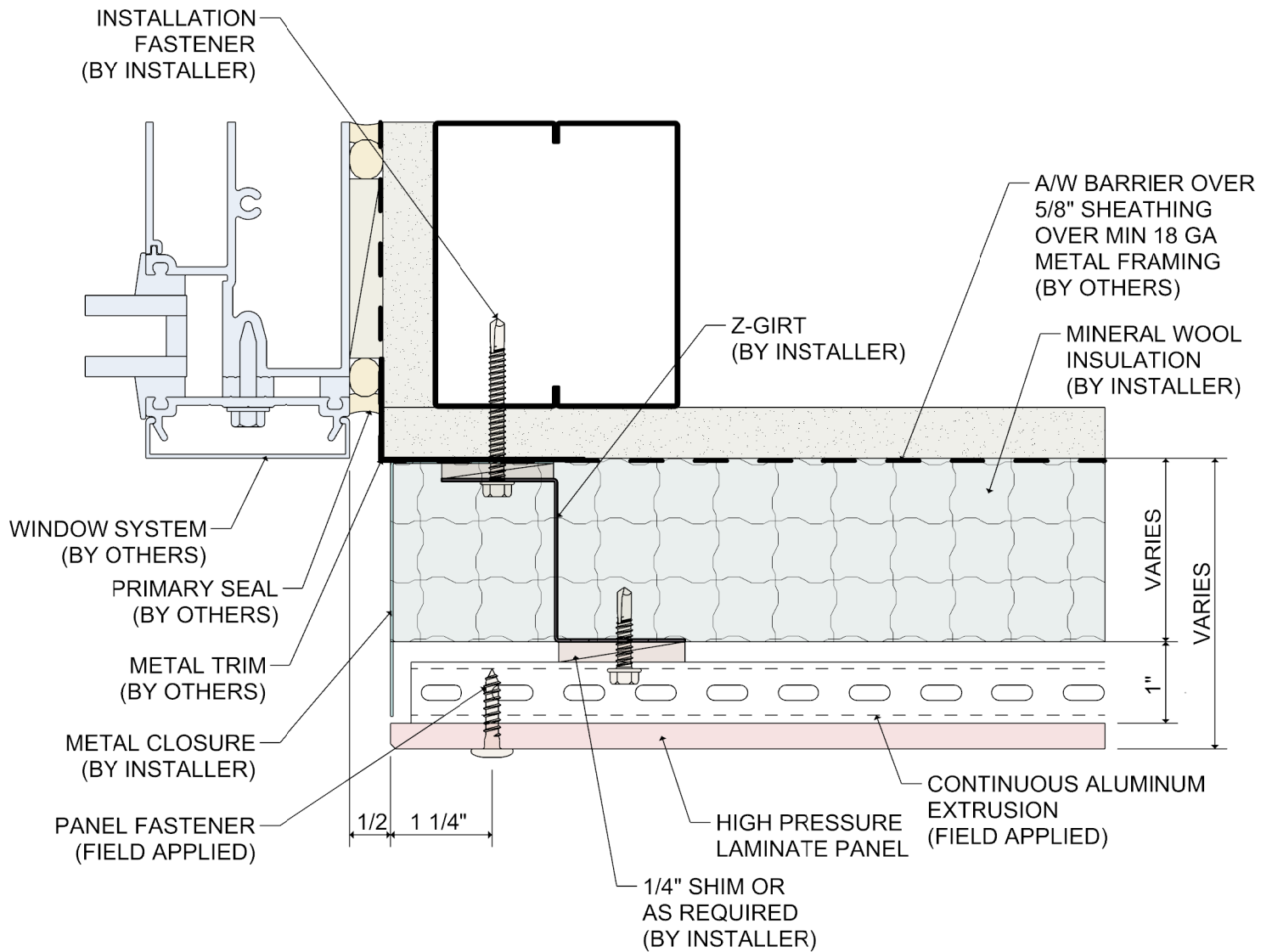
DETAIL:

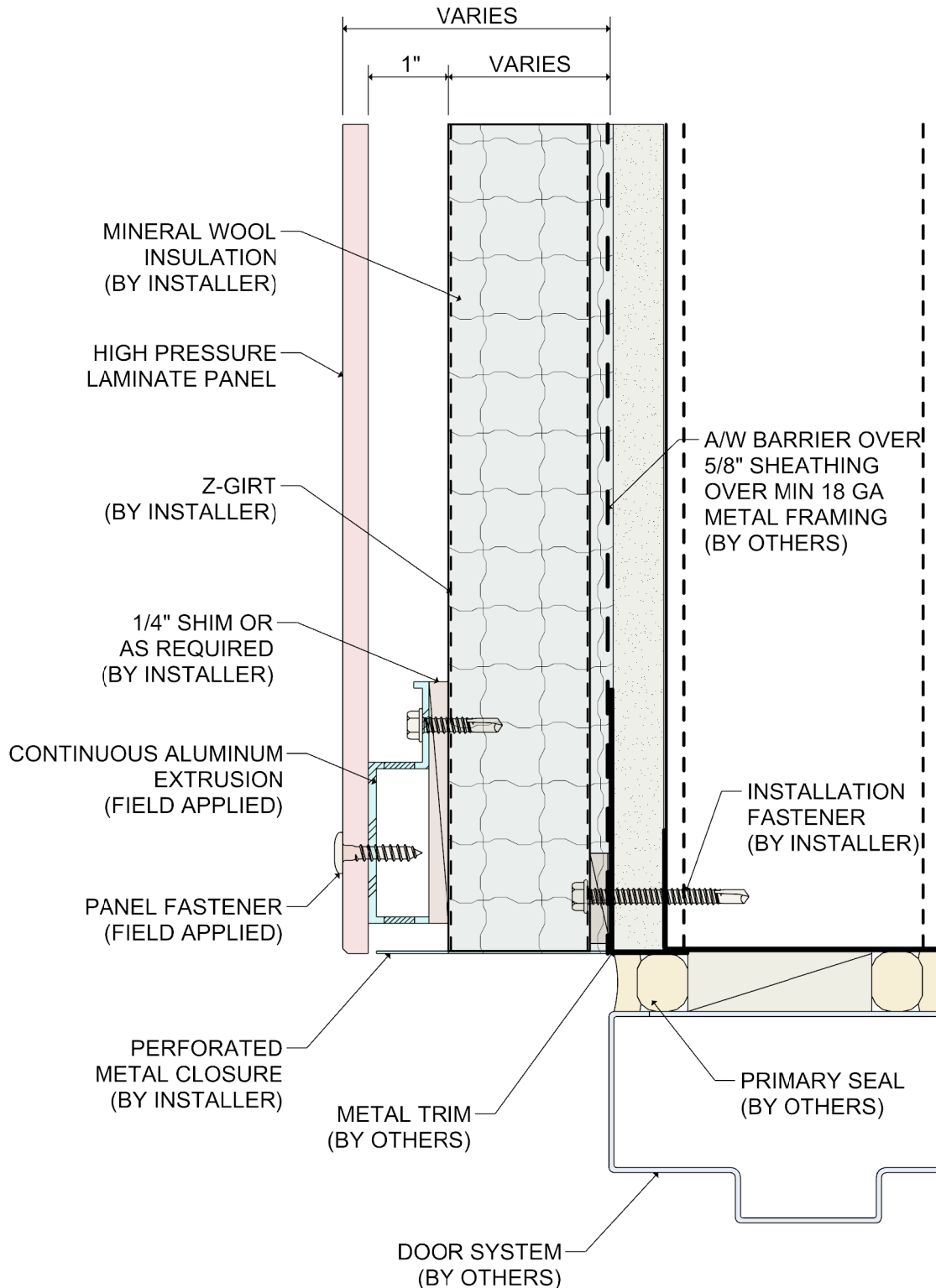
7

SYSTEM 2000

HPL RAINSCREEN

WINDOW HEAD DETAIL





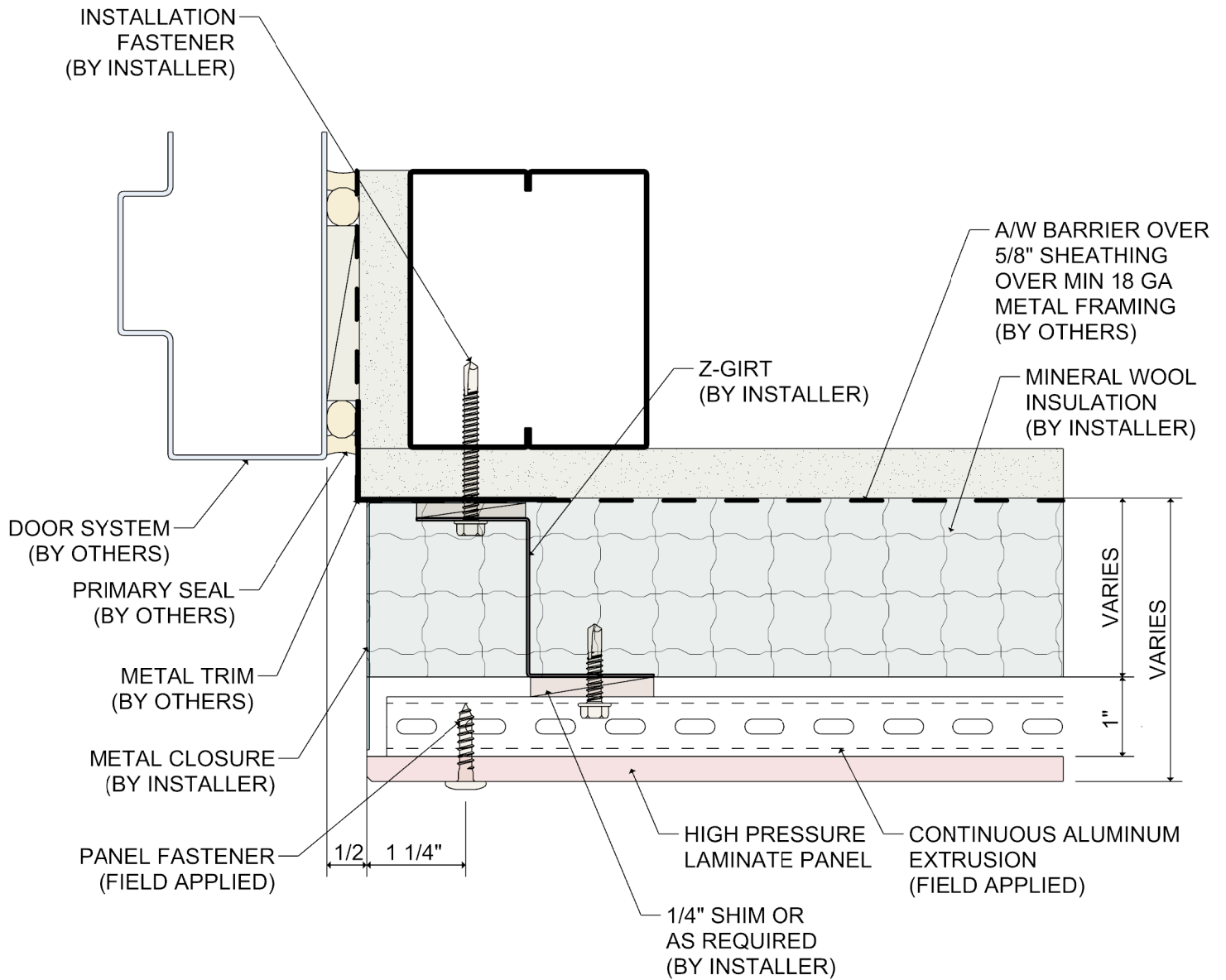
DETAIL:

9

SYSTEM 2000

HPL RAINSCREEN

DOOR HEAD DETAIL



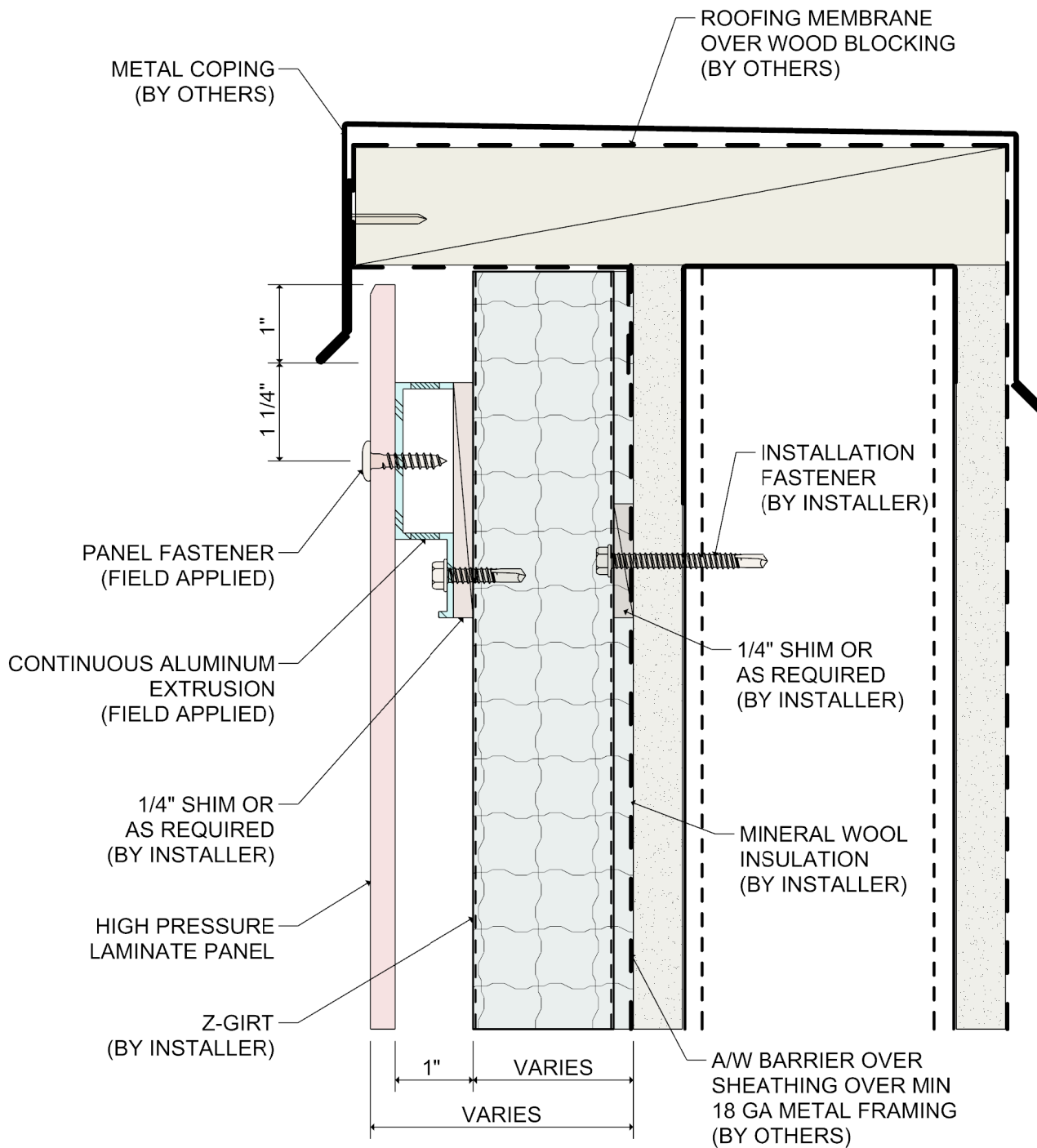
DETAIL:

10

SYSTEM 2000

HPL RAINSCREEN

TERMINATION AT DOOR JAMB

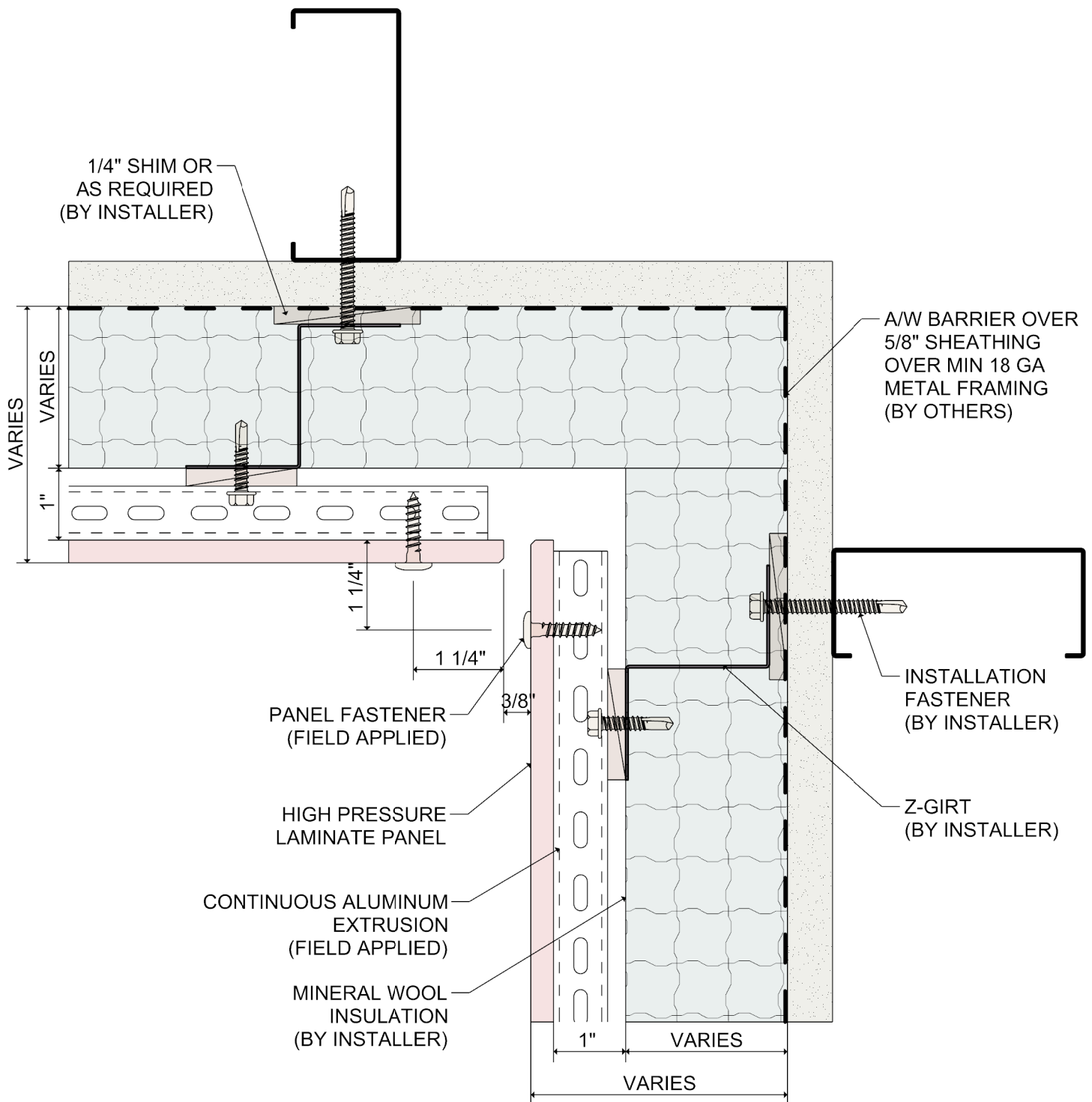


DETAIL:

11

SYSTEM 2000 HPL RAINSCREEN

TERMINATION AT PARAPET CAP



DETAIL:

12

SYSTEM 2000

HPL RAINSCREEN

INSIDE CORNER

