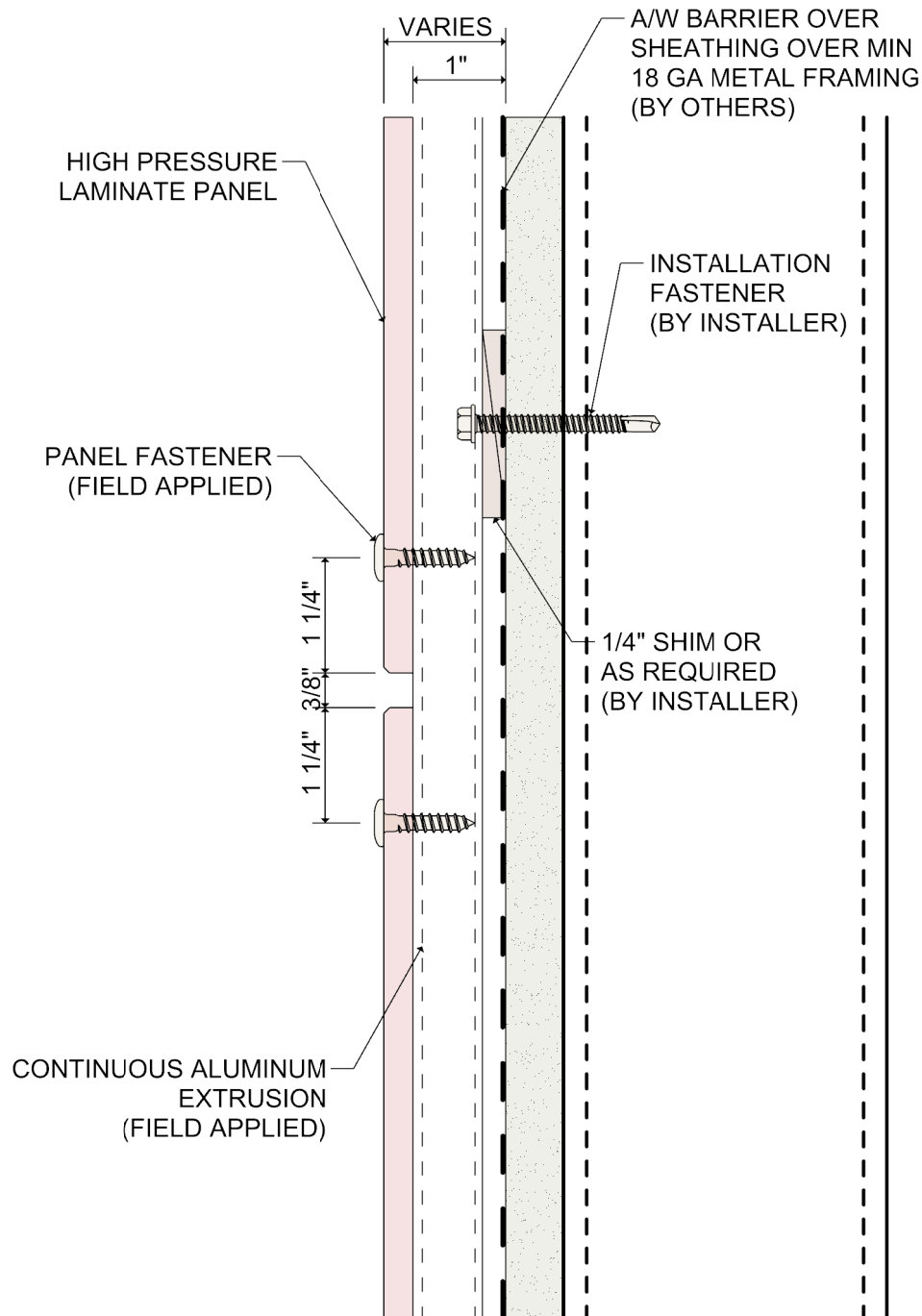


System 2100

HPL Panel Rainscreen Attachment System

Standard Details

Revised 11/2020

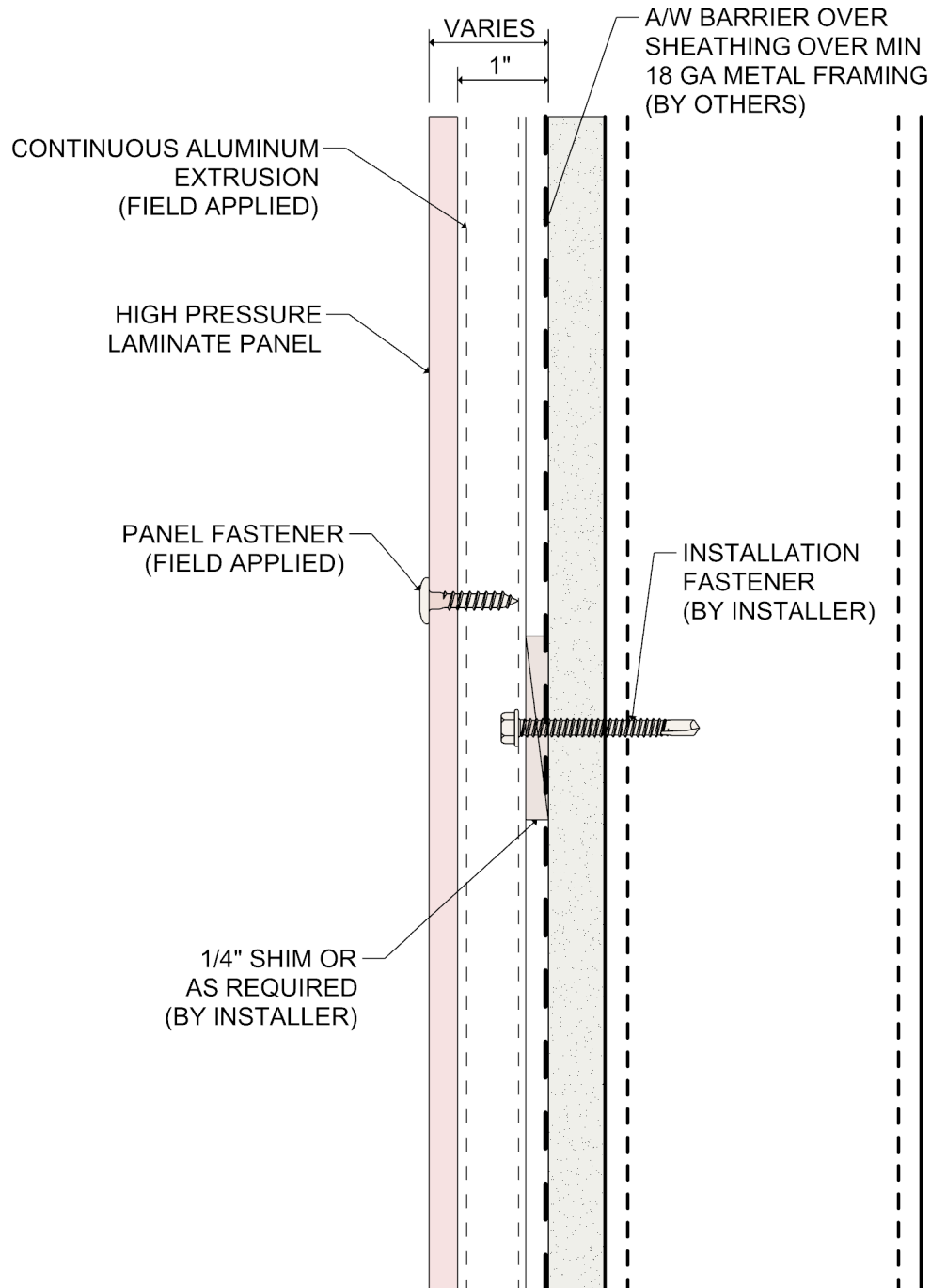


DETAIL:

1

SYSTEM 2100 HPL RAINSCREEN

HORIZONTAL PANEL JOINT



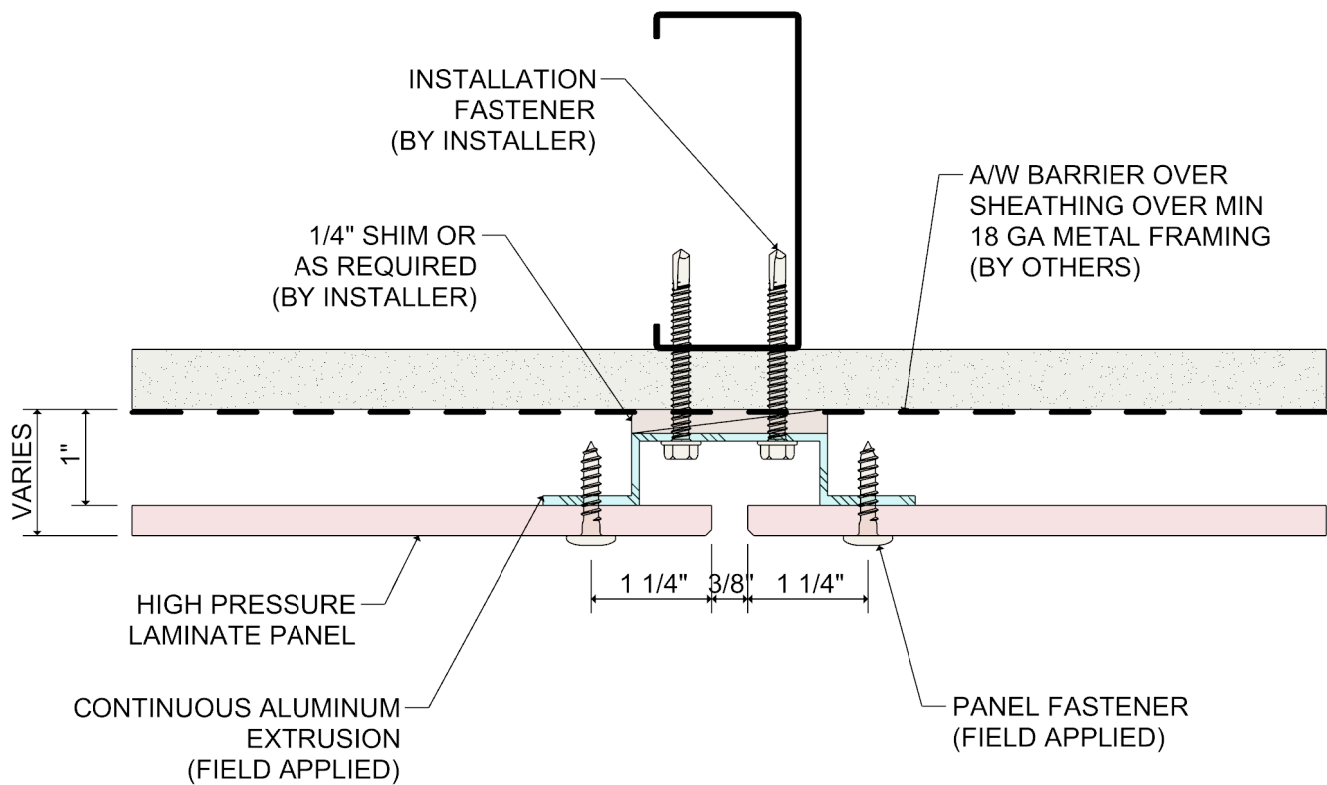
DETAIL:

2

SYSTEM 2100

HPL RAINSCREEN

HORIZONTAL MID PANEL

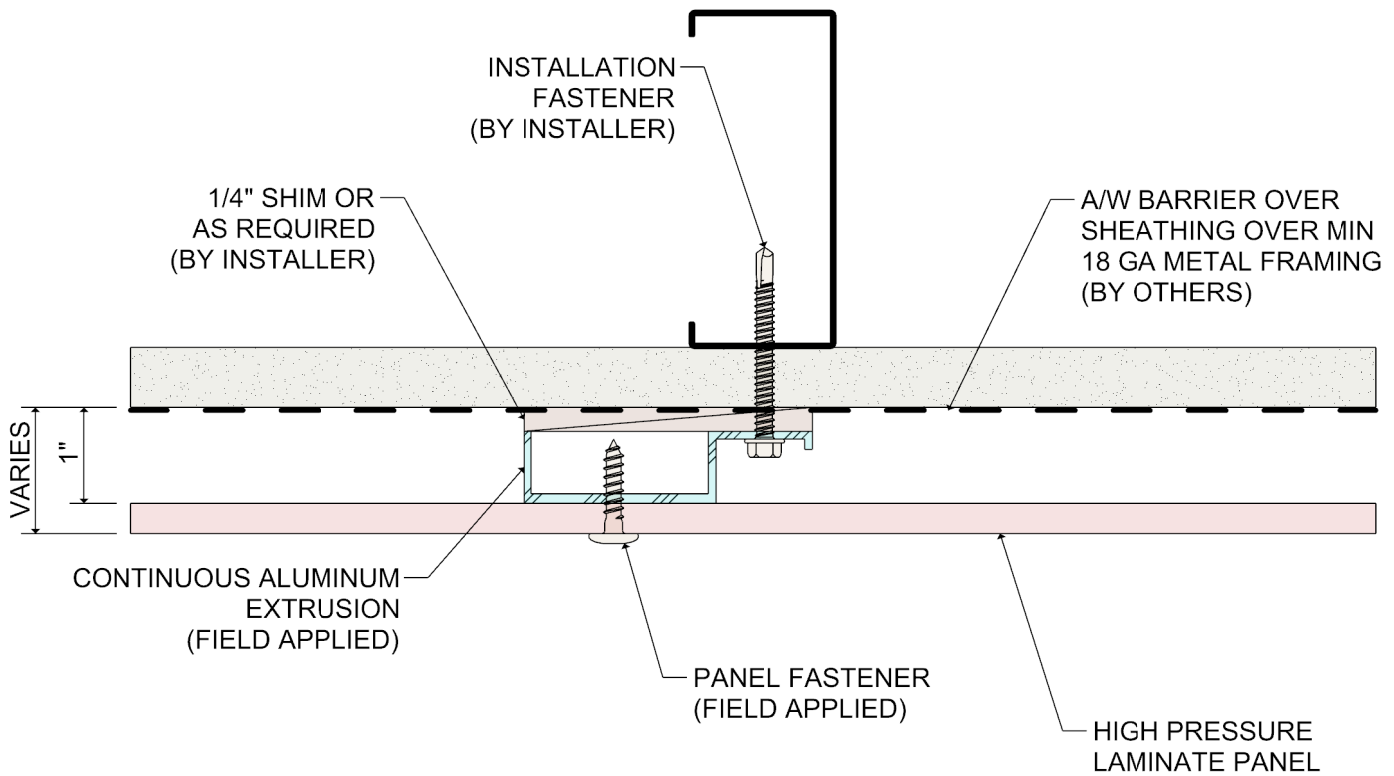


DETAIL:

3

SYSTEM 2100 HPL RAINSCREEN

VERTICAL PANEL JOINT

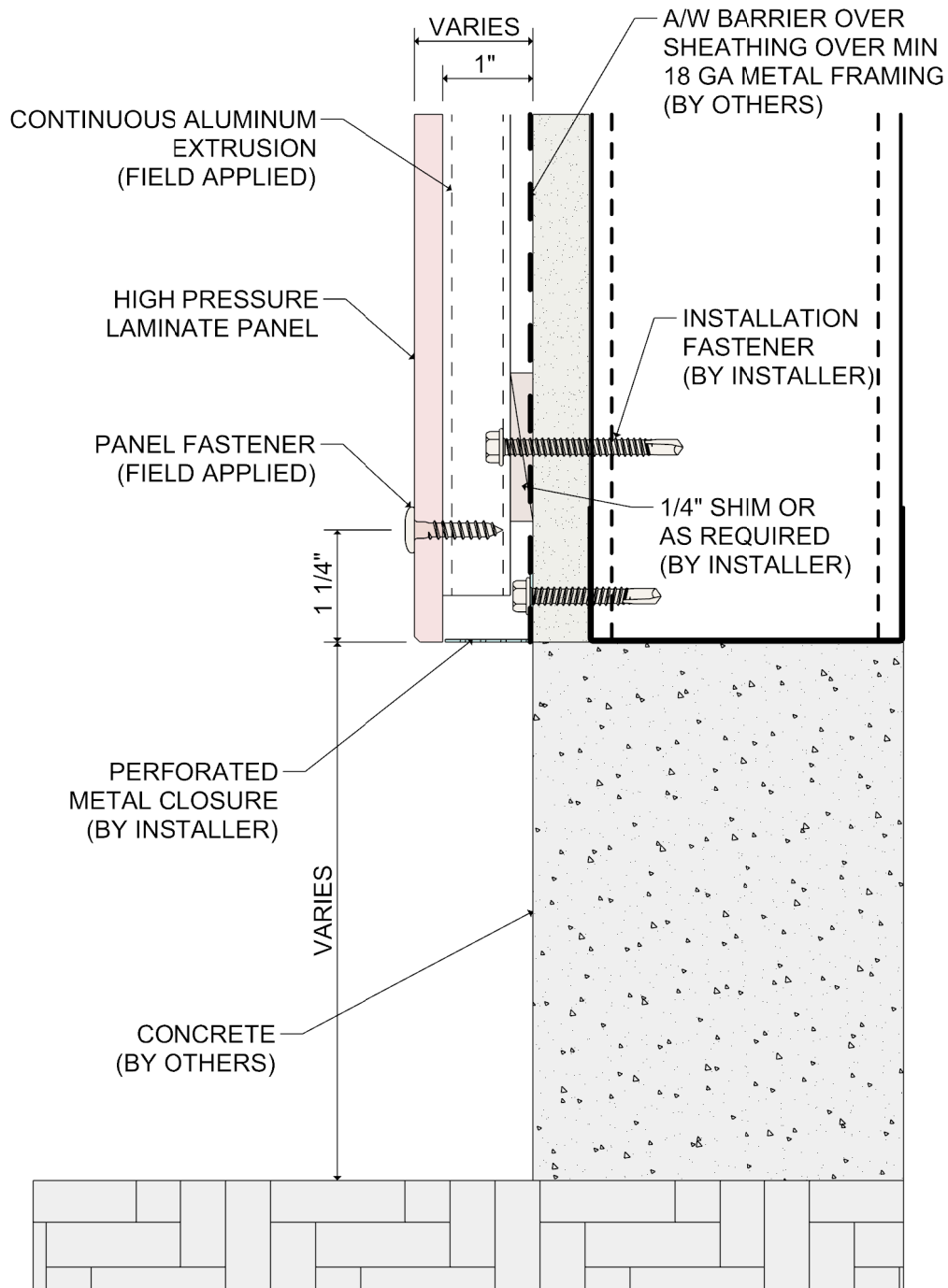


DETAIL:

4

SYSTEM 2100 HPL RAINSCREEN

VERTICAL MID PANEL DETAIL

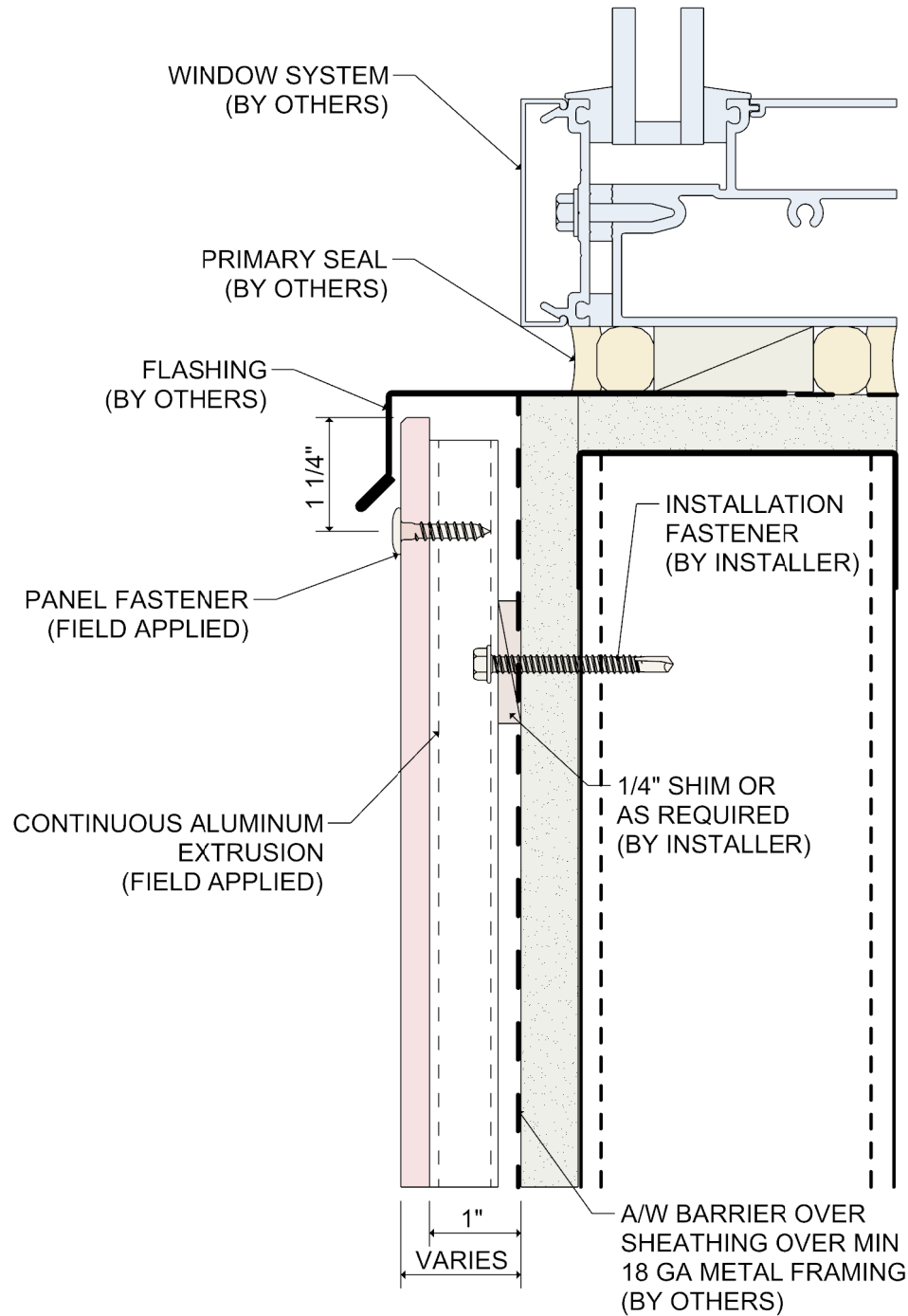


DETAIL:

5

SYSTEM 2100 HPL RAINSCREEN

BASE OF WALL DETAIL

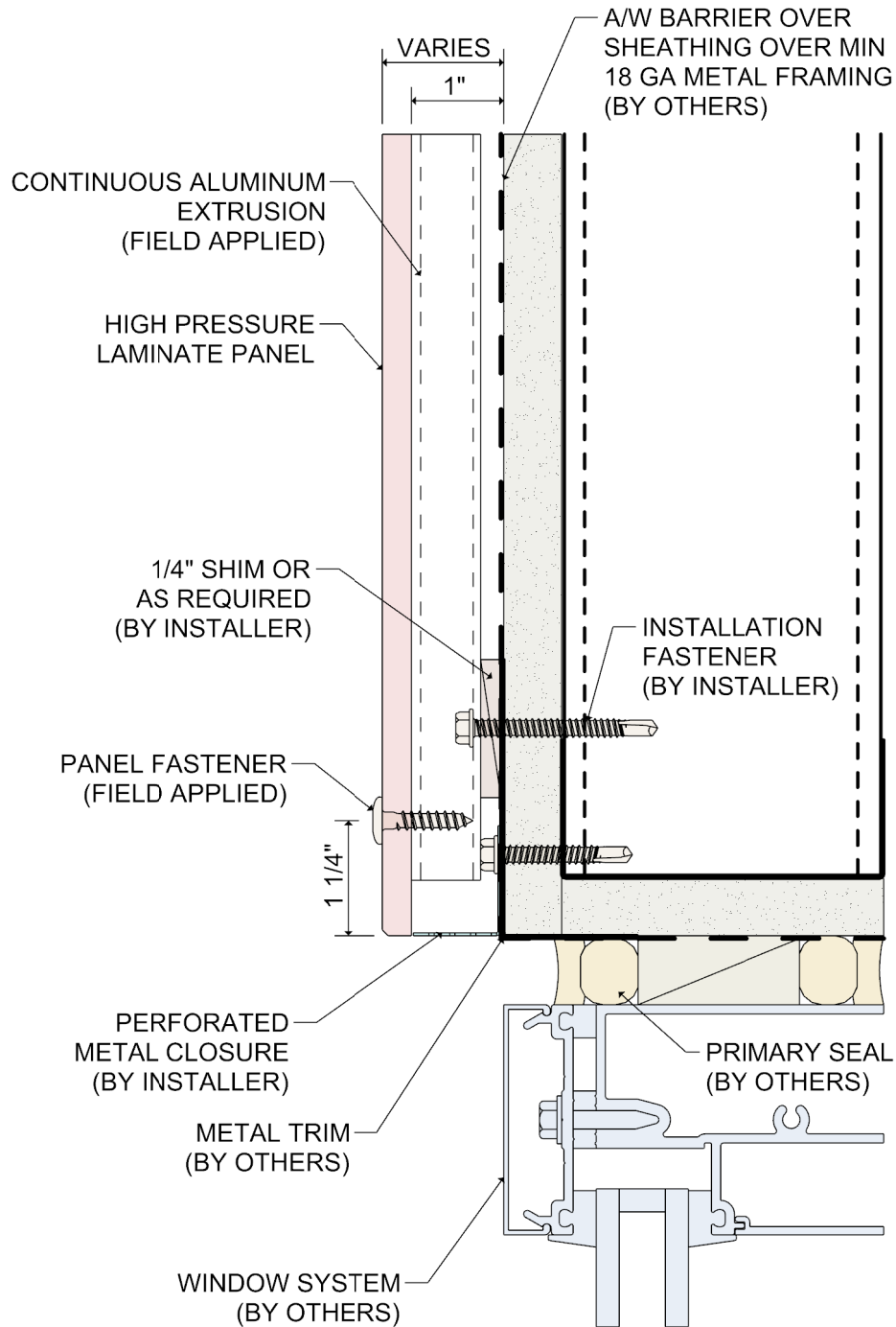


DETAIL:

6

SYSTEM 2100 HPL RAINSCREEN

WINDOW SILL DETAIL



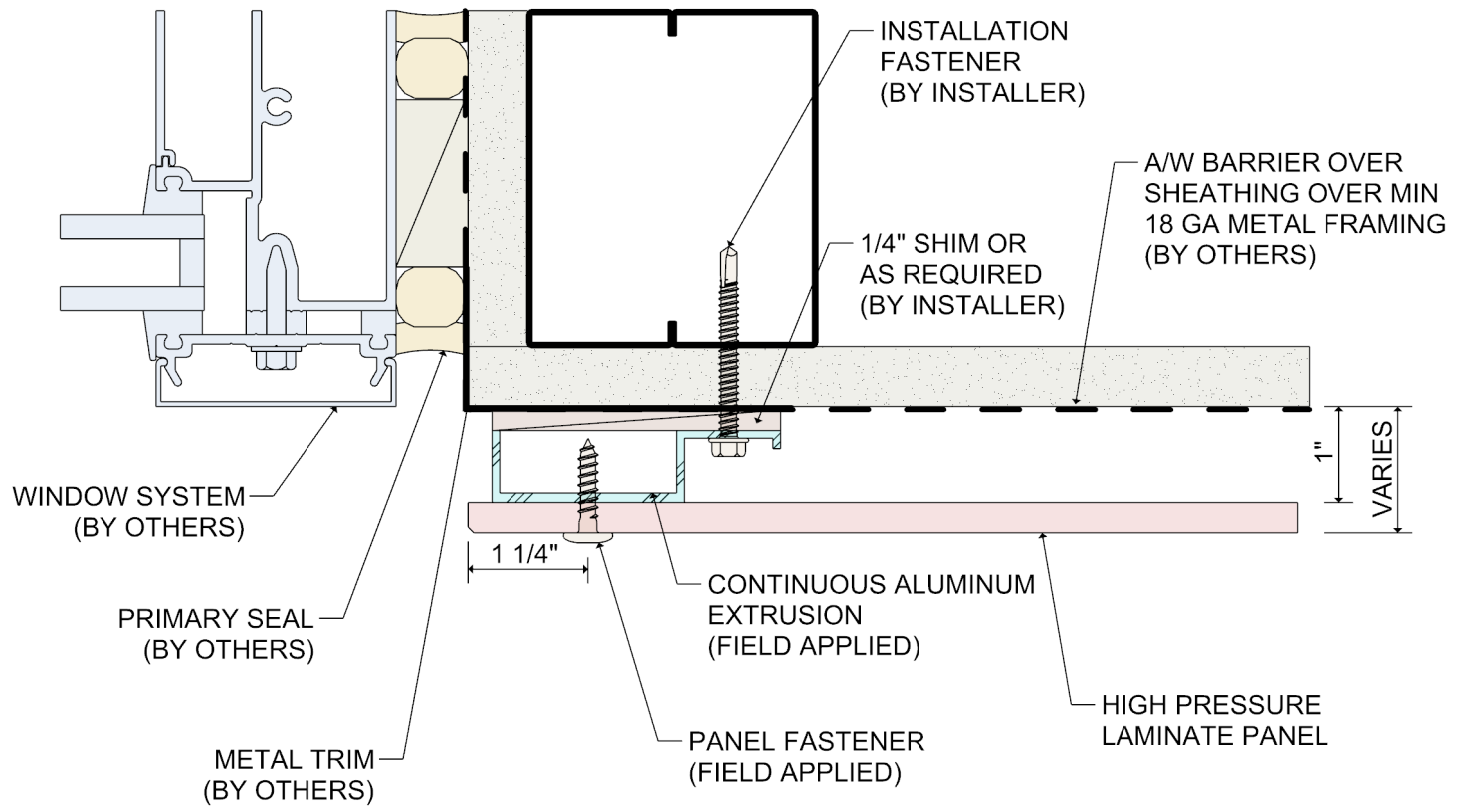
DETAIL:

7

SYSTEM 2100

HPL RAINSCREEN

WINDOW HEAD



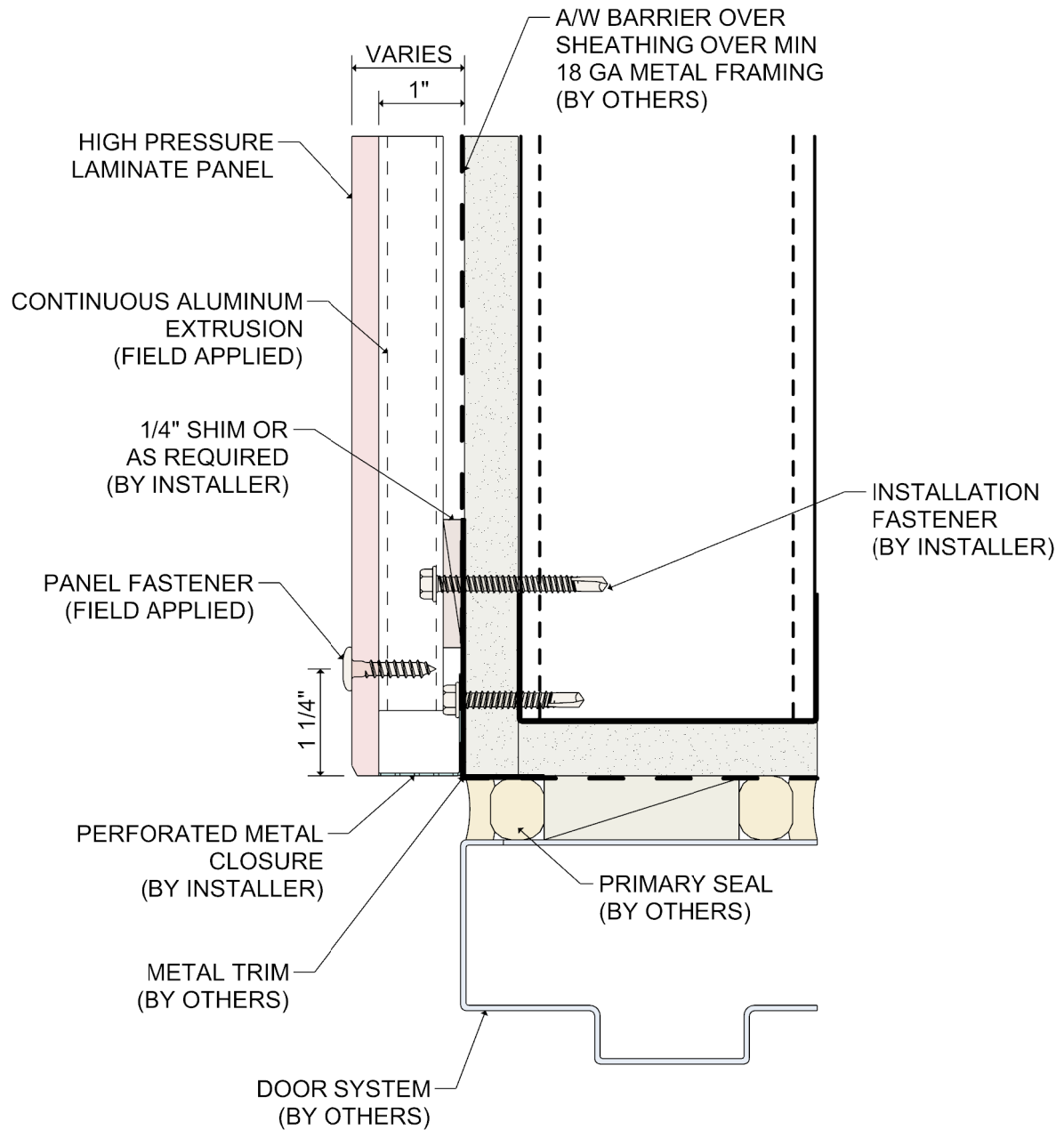
DETAIL:

8

SYSTEM 2100

HPL RAINSCREEN

WINDOW JAMB DETAIL



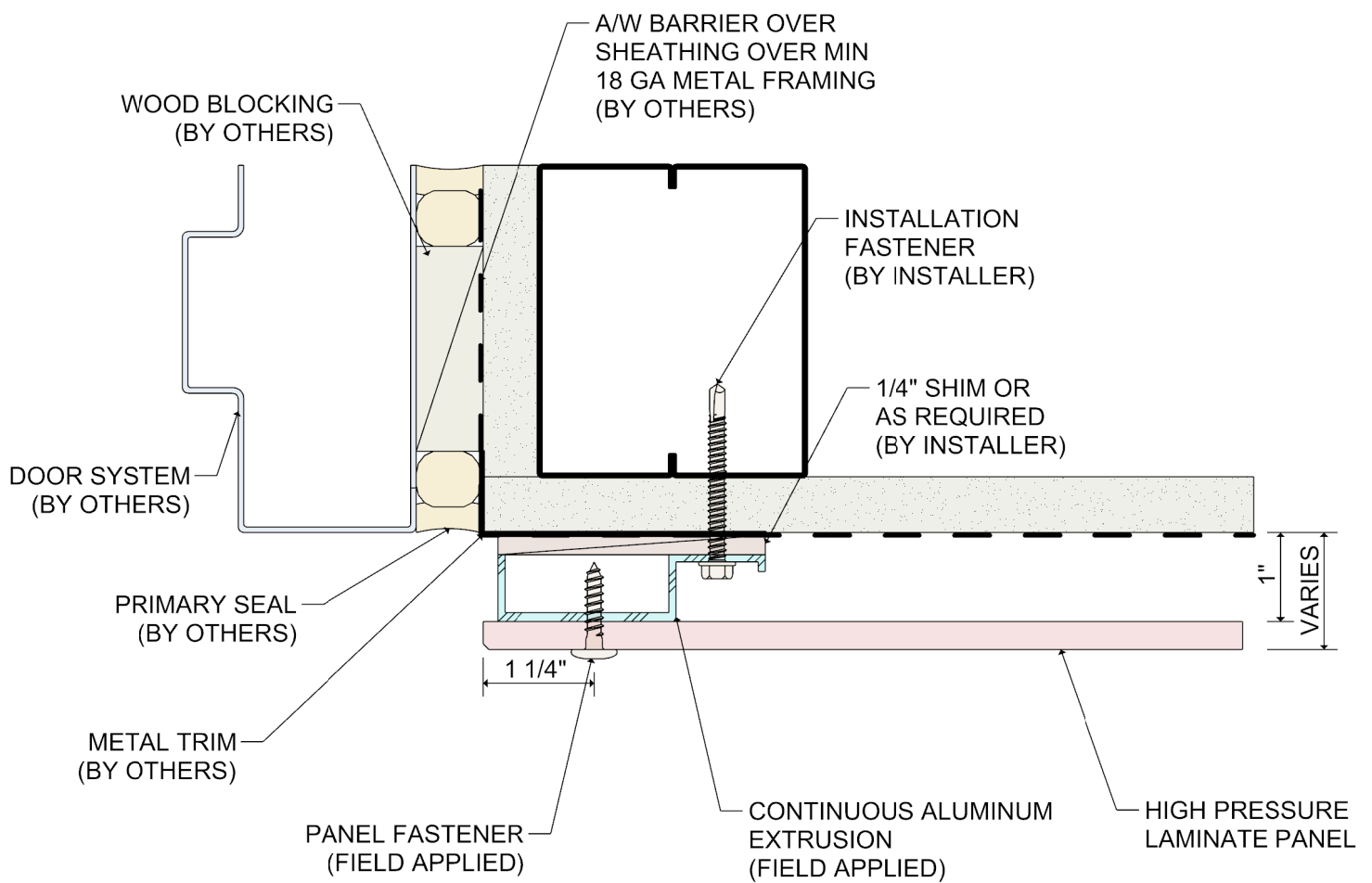
DETAIL:

9

SYSTEM 2100

HPL RAINSCREEN

DOOR HEAD

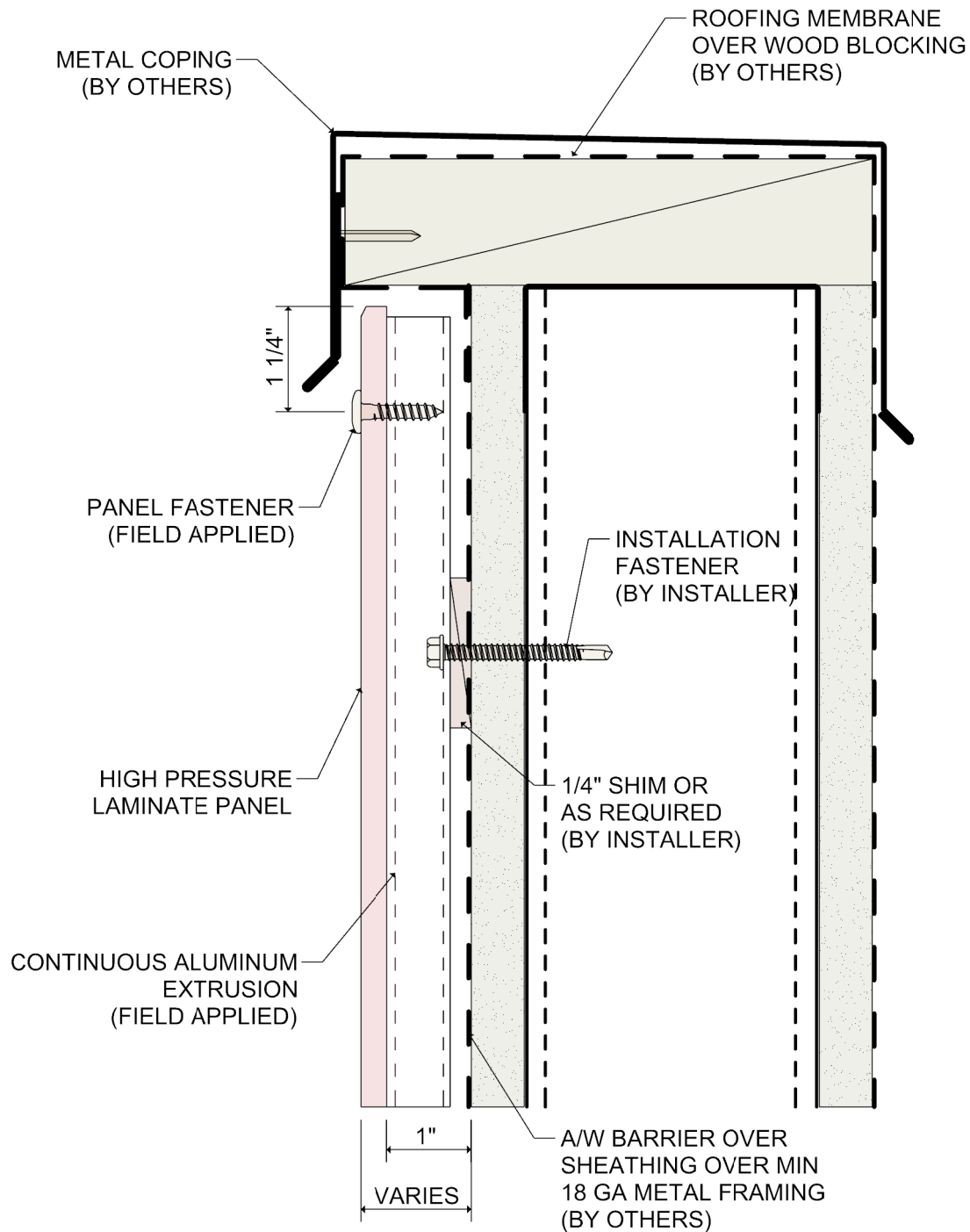


DETAIL:

10

SYSTEM 2100 HPL RAINSCREEN

TERMINATION @ DOOR JAMB



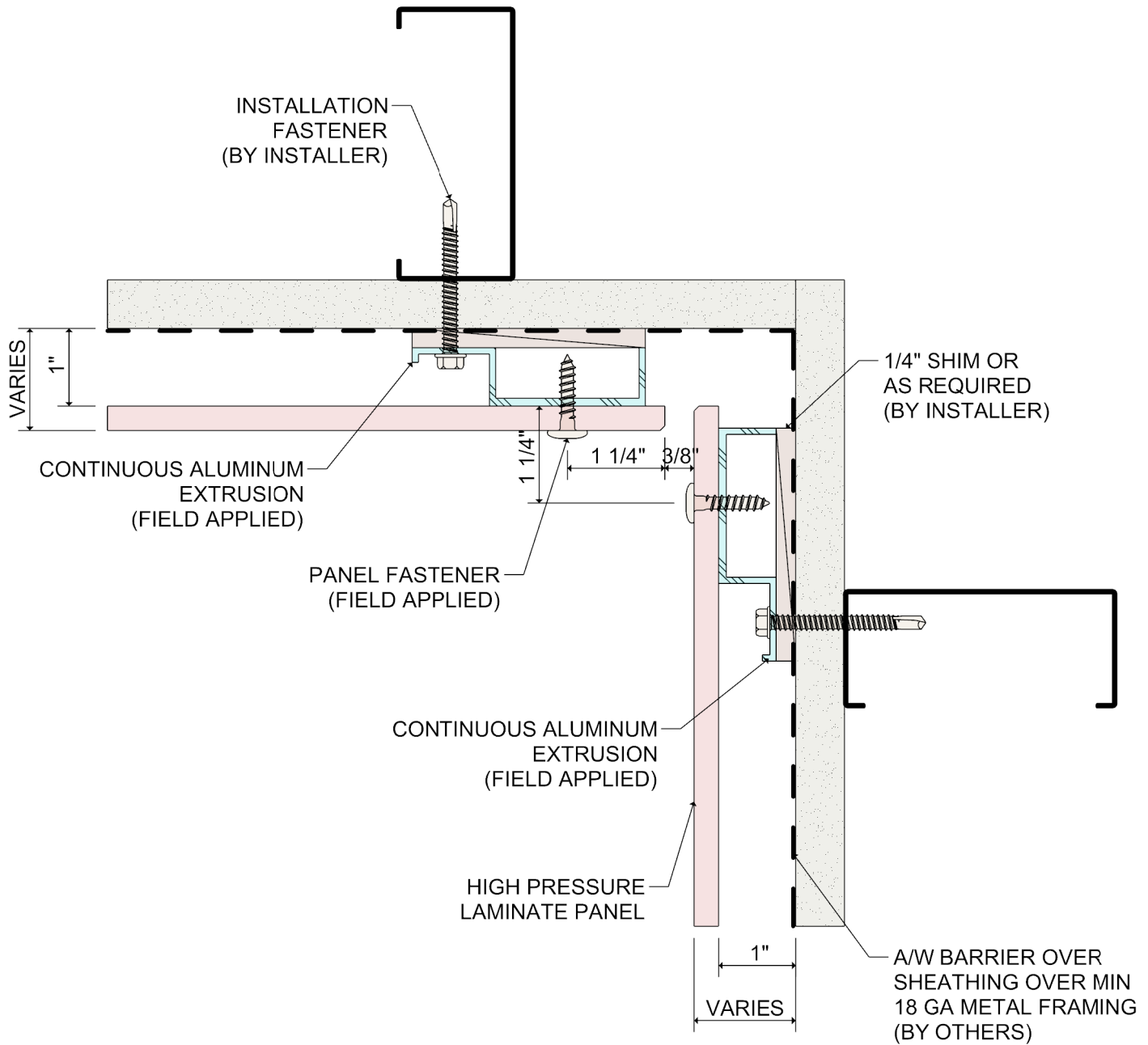
DETAIL:

SYSTEM 2100

HPL RAINSCREEN

11

TERMINATION @ PARAPET CAP



DETAIL:

12

SYSTEM 2100

HPL RAINSCREEN

INSIDE CORNER

