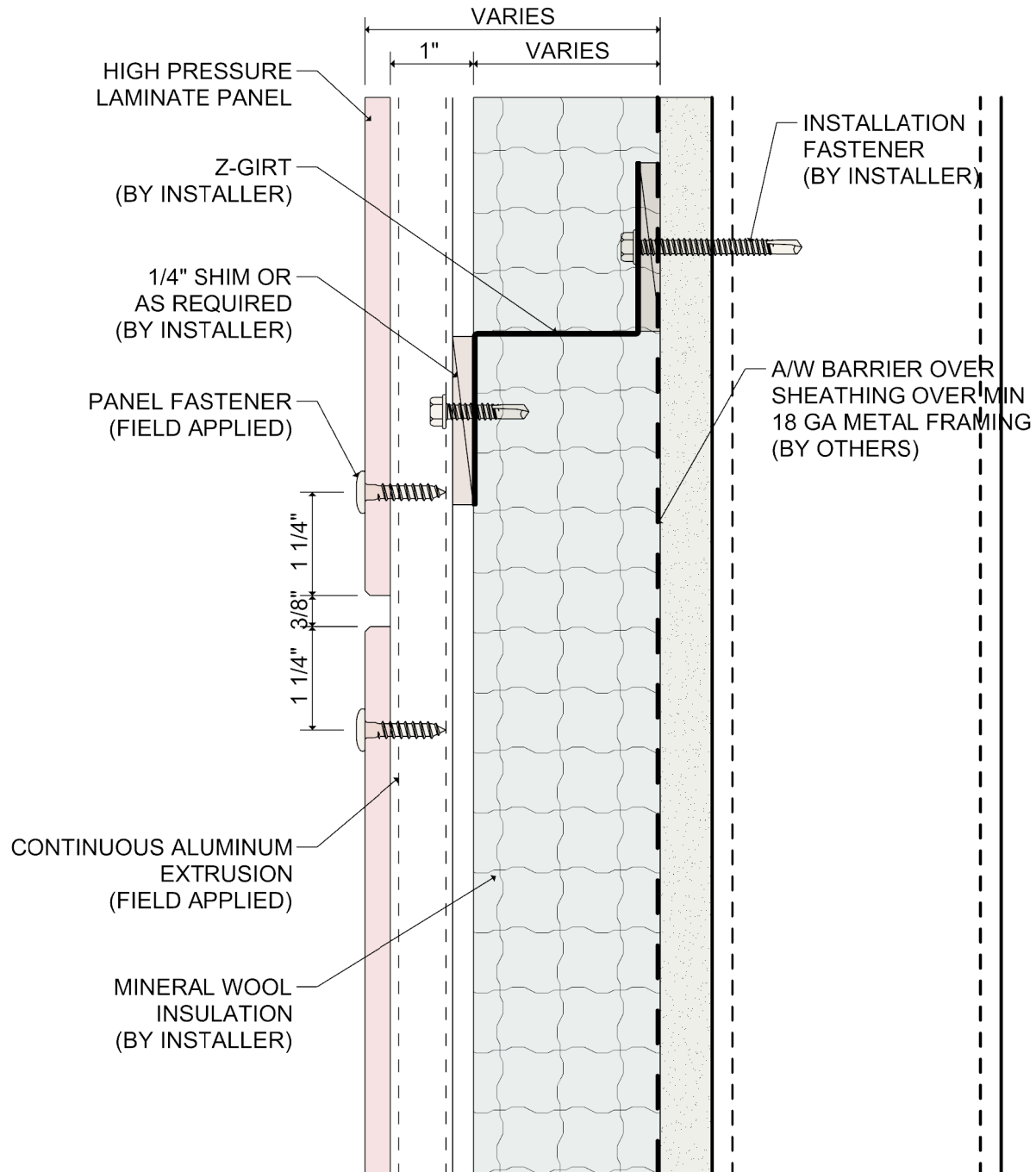


System 2100 HPL Panel Rainscreen Attachment System with Mineral Wool Insulation

Standard Details

Revised 11/2020

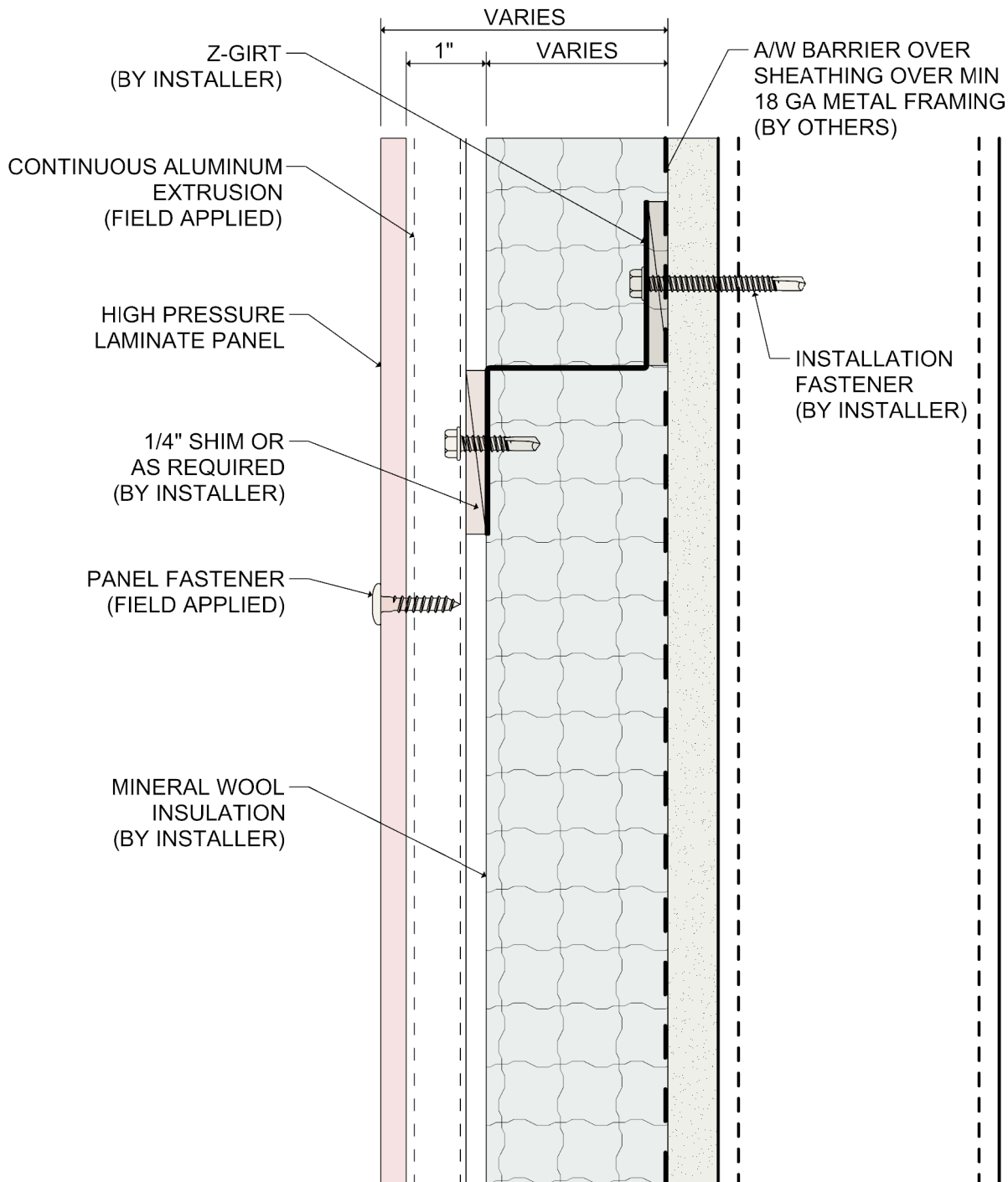


DETAIL:

1

SYSTEM 2100 HPL RAINSCREEN

HORIZONTAL PANEL JOINT



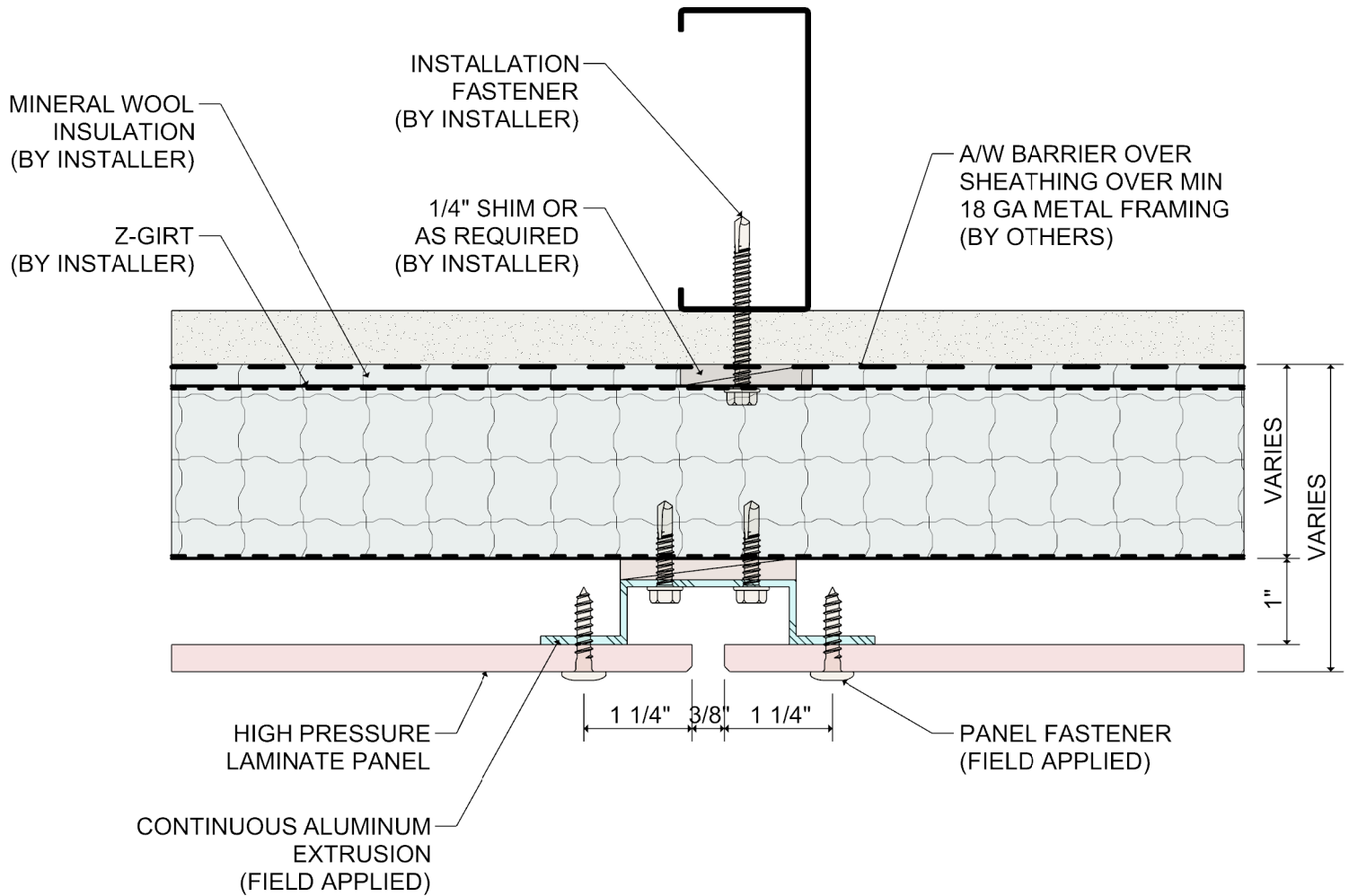
DETAIL:

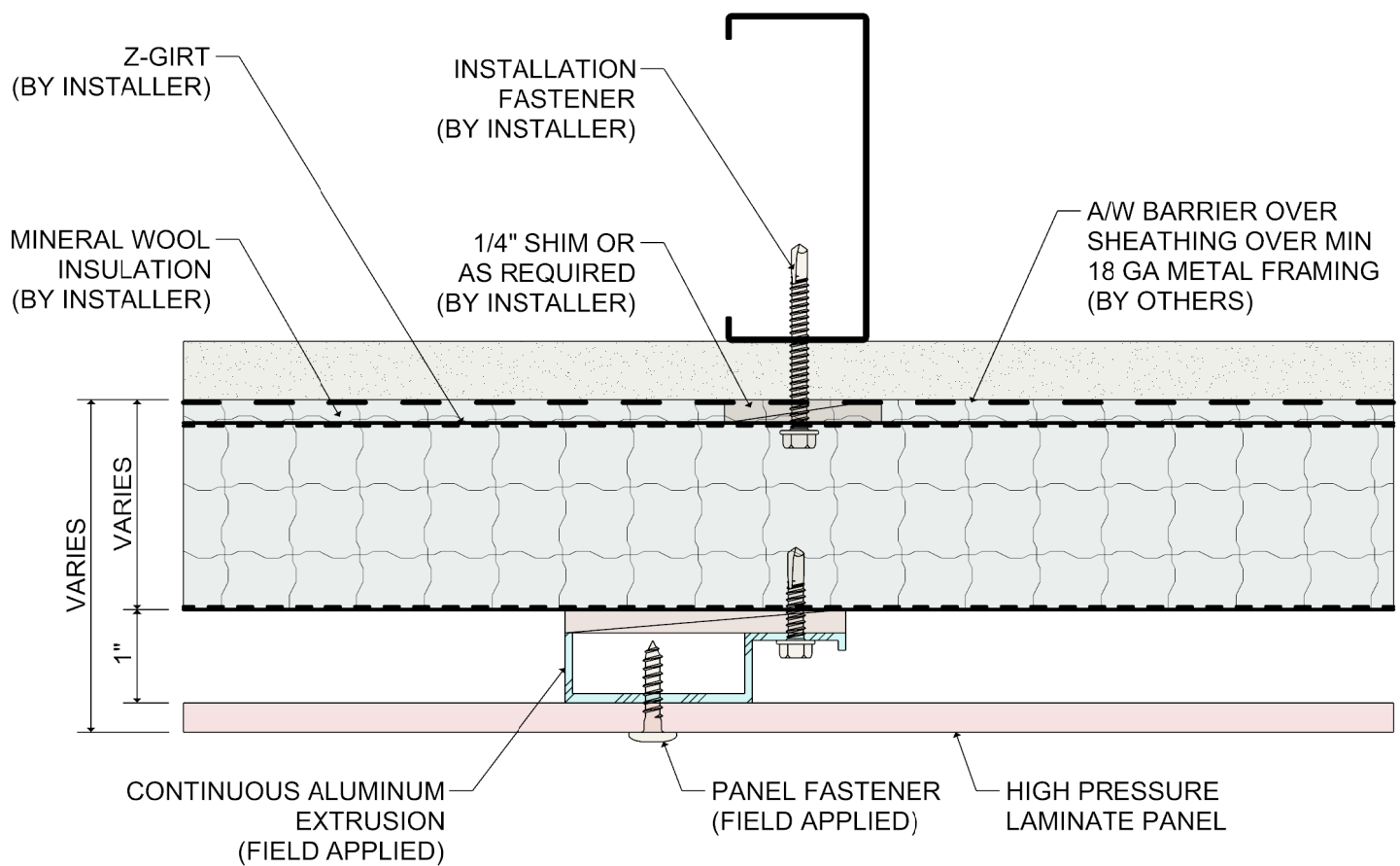
2

SYSTEM 2100

HPL RAINSCREEN

HORIZONTAL MID PANEL





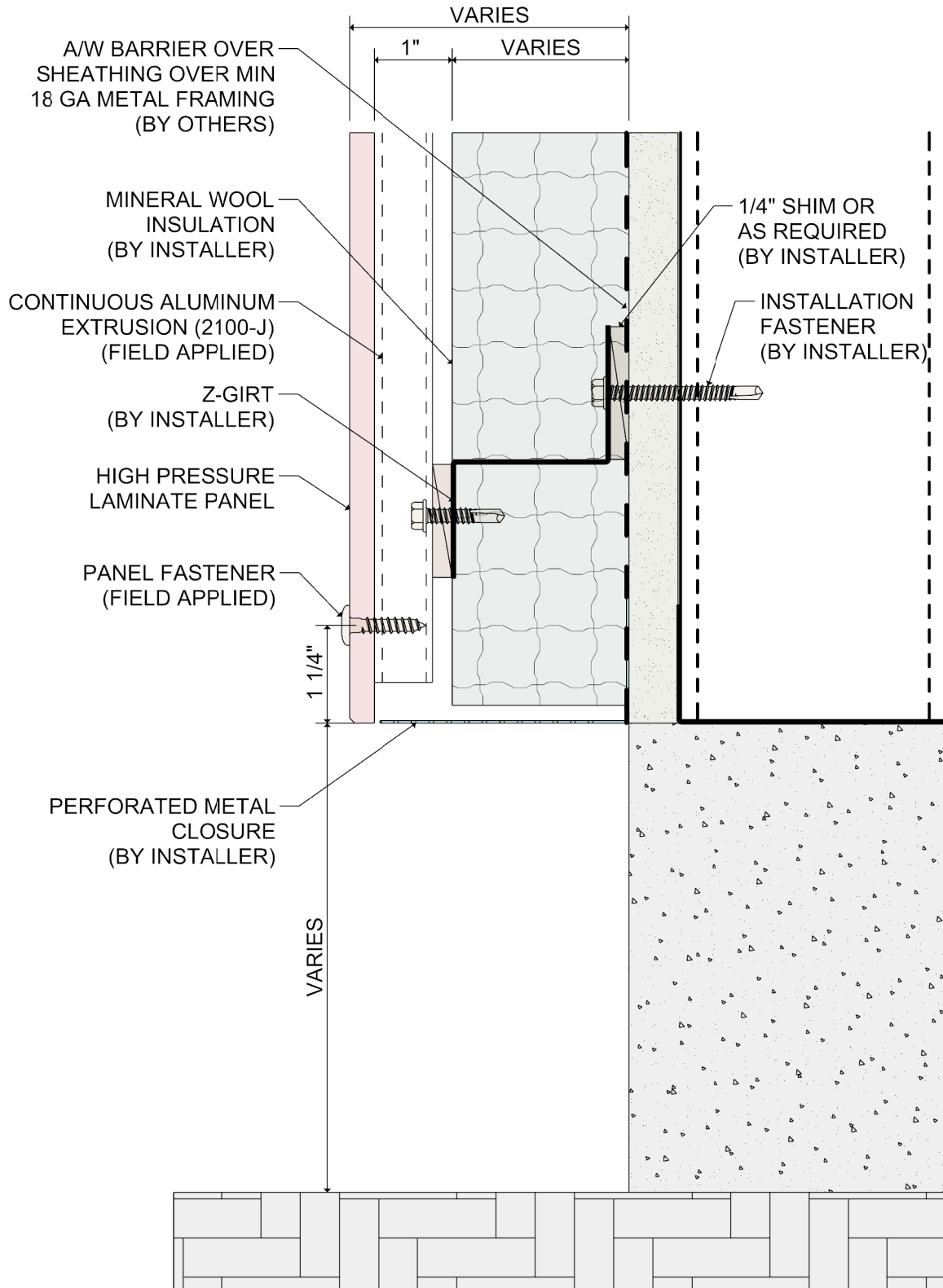
DETAIL:

4

SYSTEM 2100

HPL RAINSCREEN

VERTICAL MID PANEL DETAIL



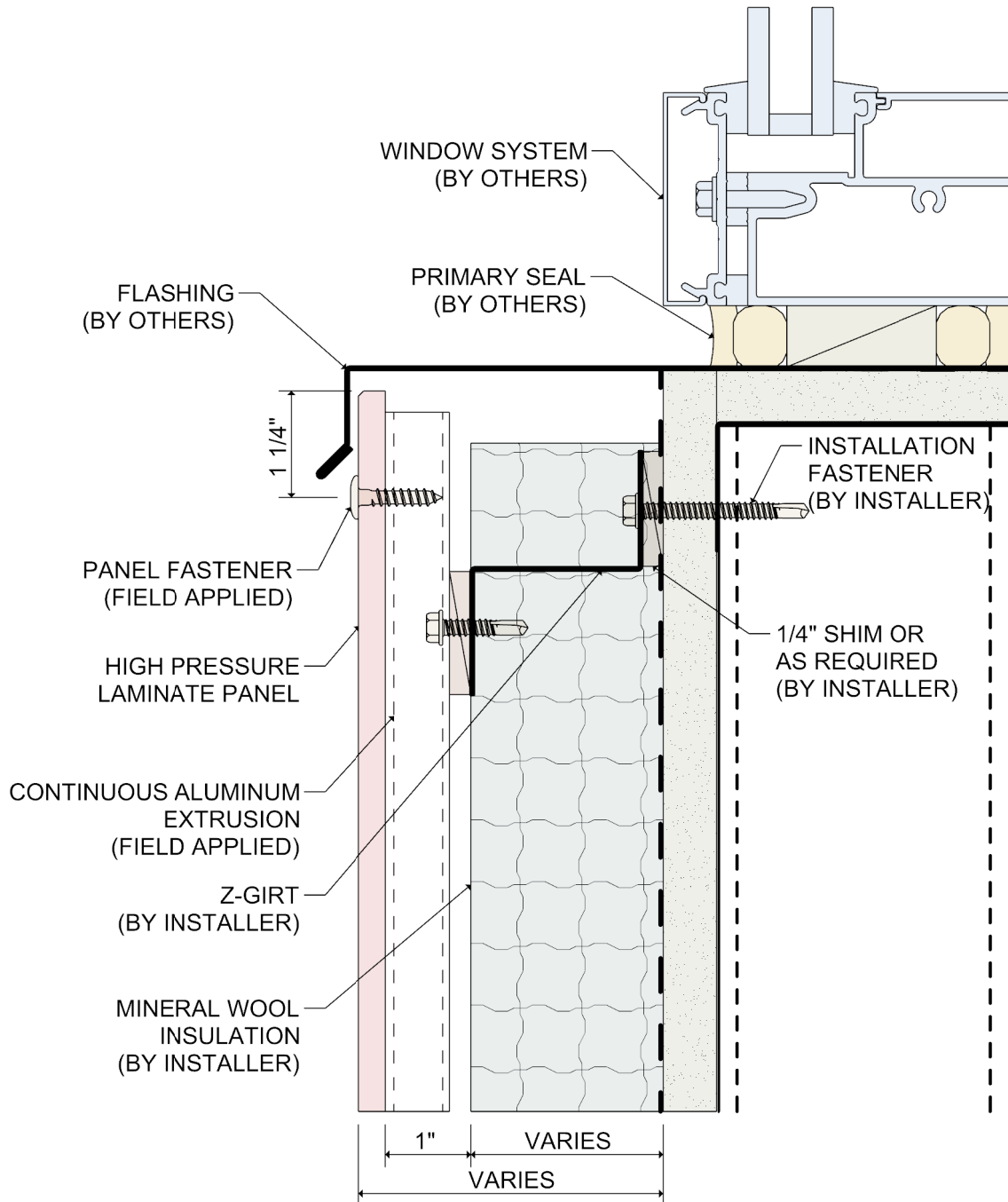
DETAIL:

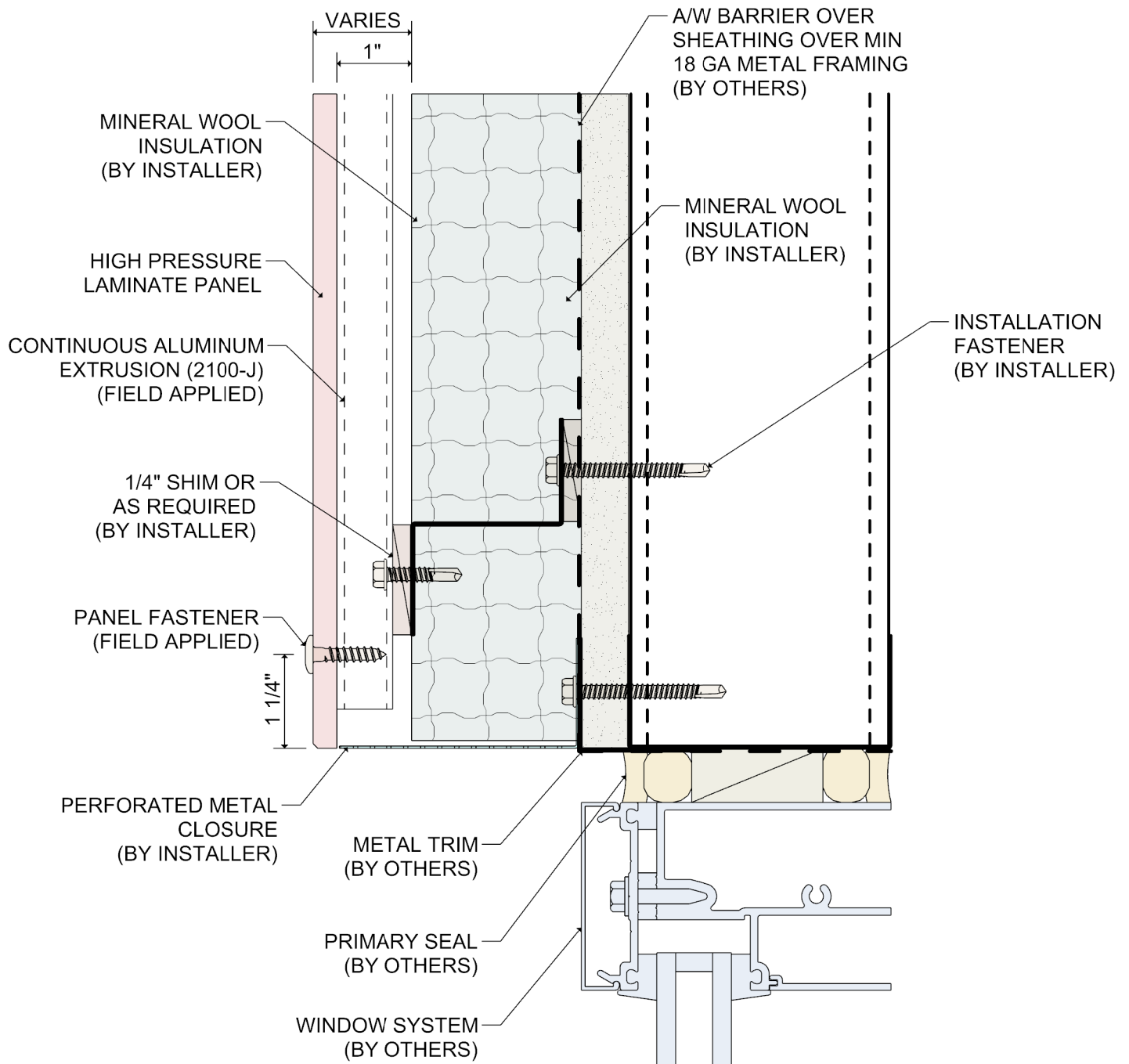
5

SYSTEM 2100

HPL RAINSCREEN

BASE OF WALL DETAIL





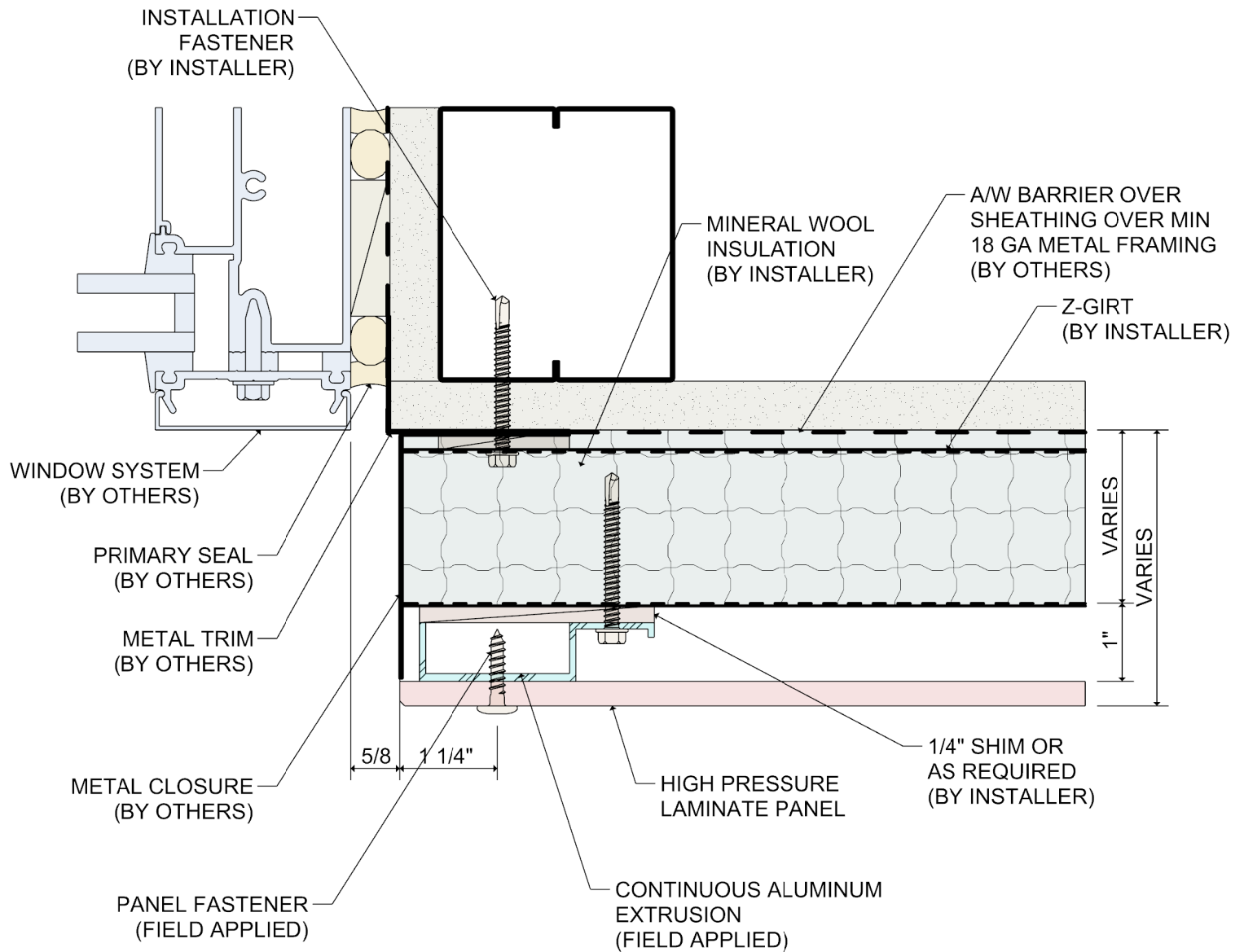
DETAIL:

7

SYSTEM 2100

HPL RAINSCREEN

WINDOW HEAD



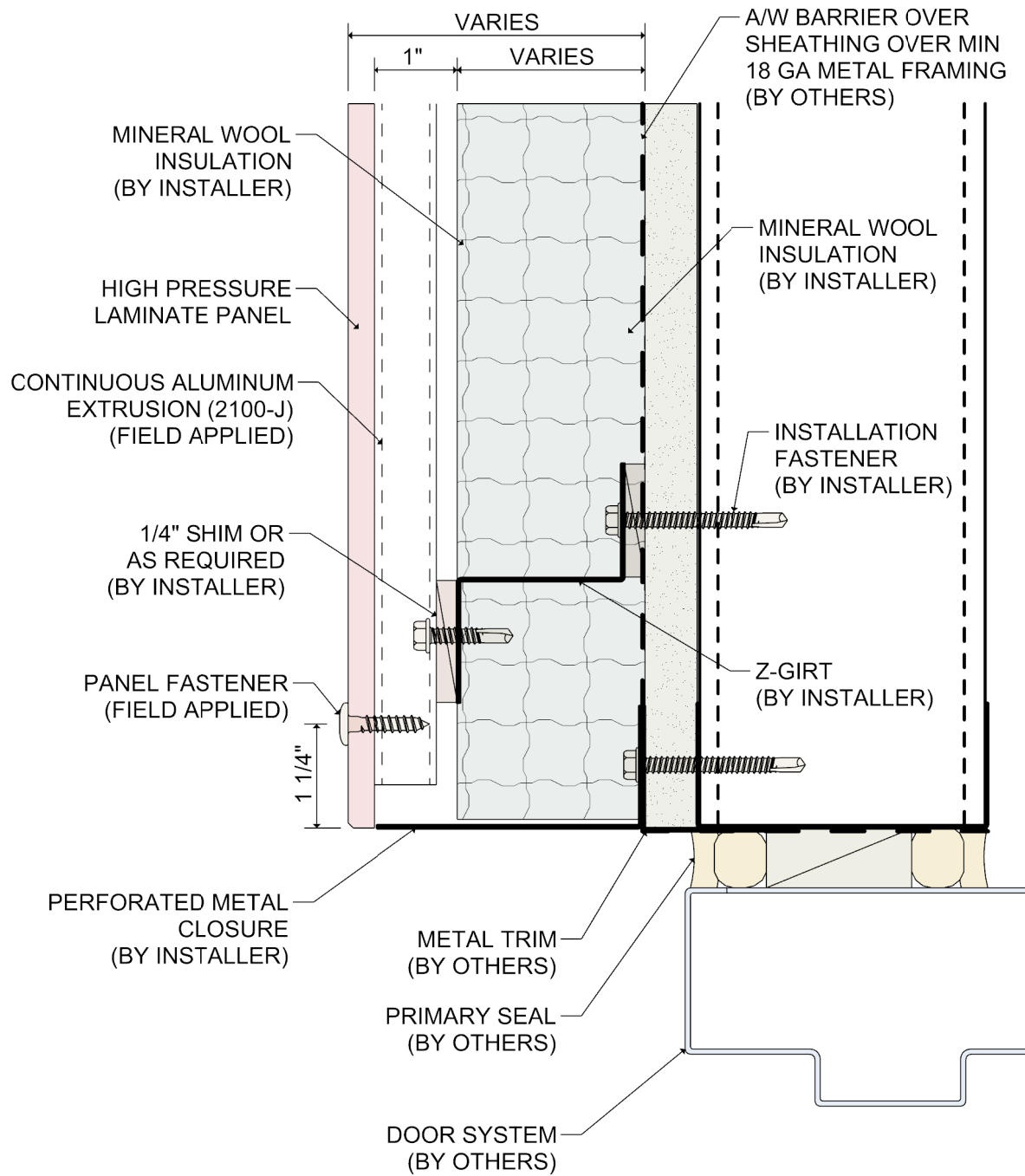
DETAIL:

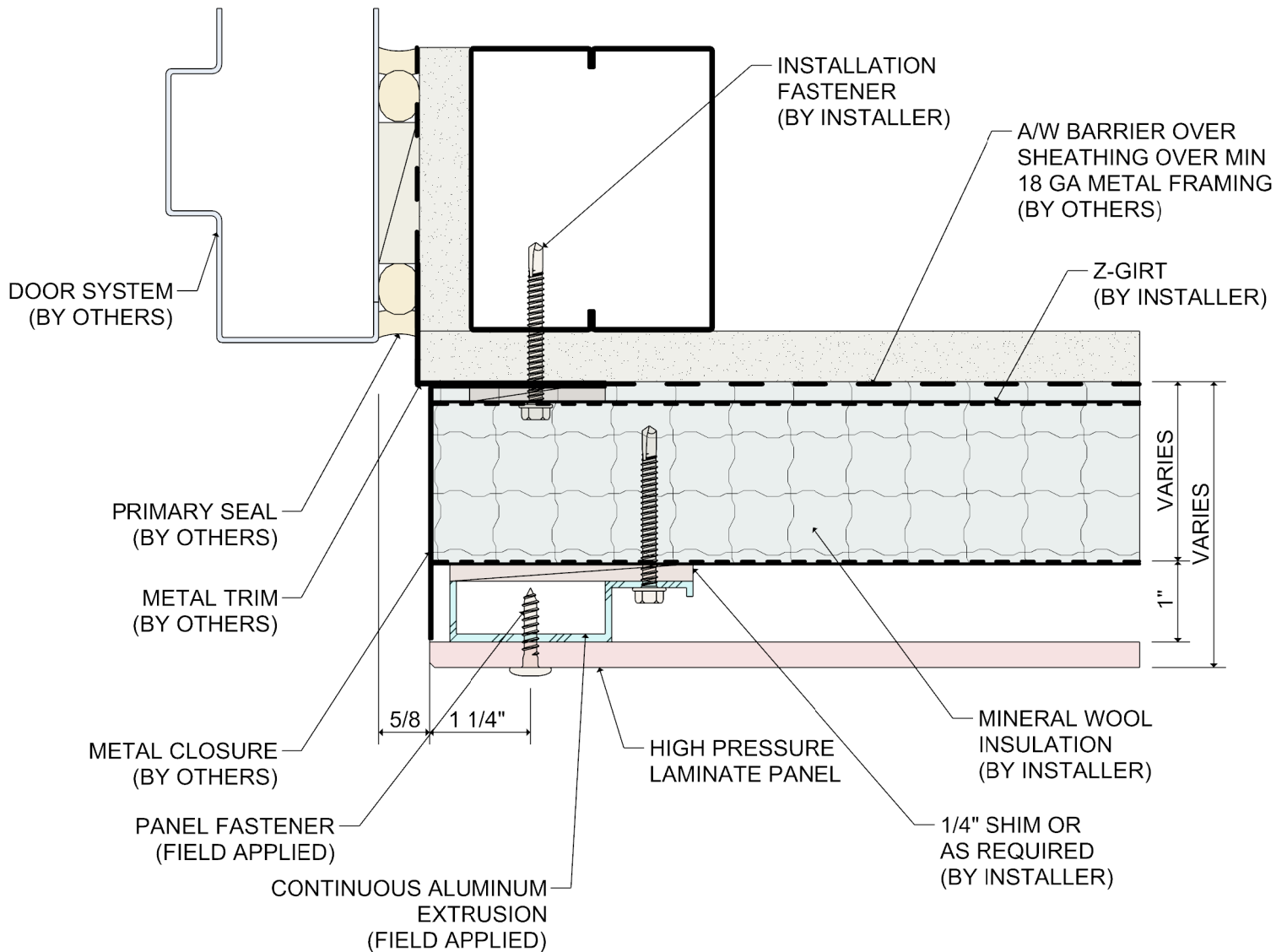
8

SYSTEM 2100

HPL RAINSCREEN

WINDOW JAMB DETAIL





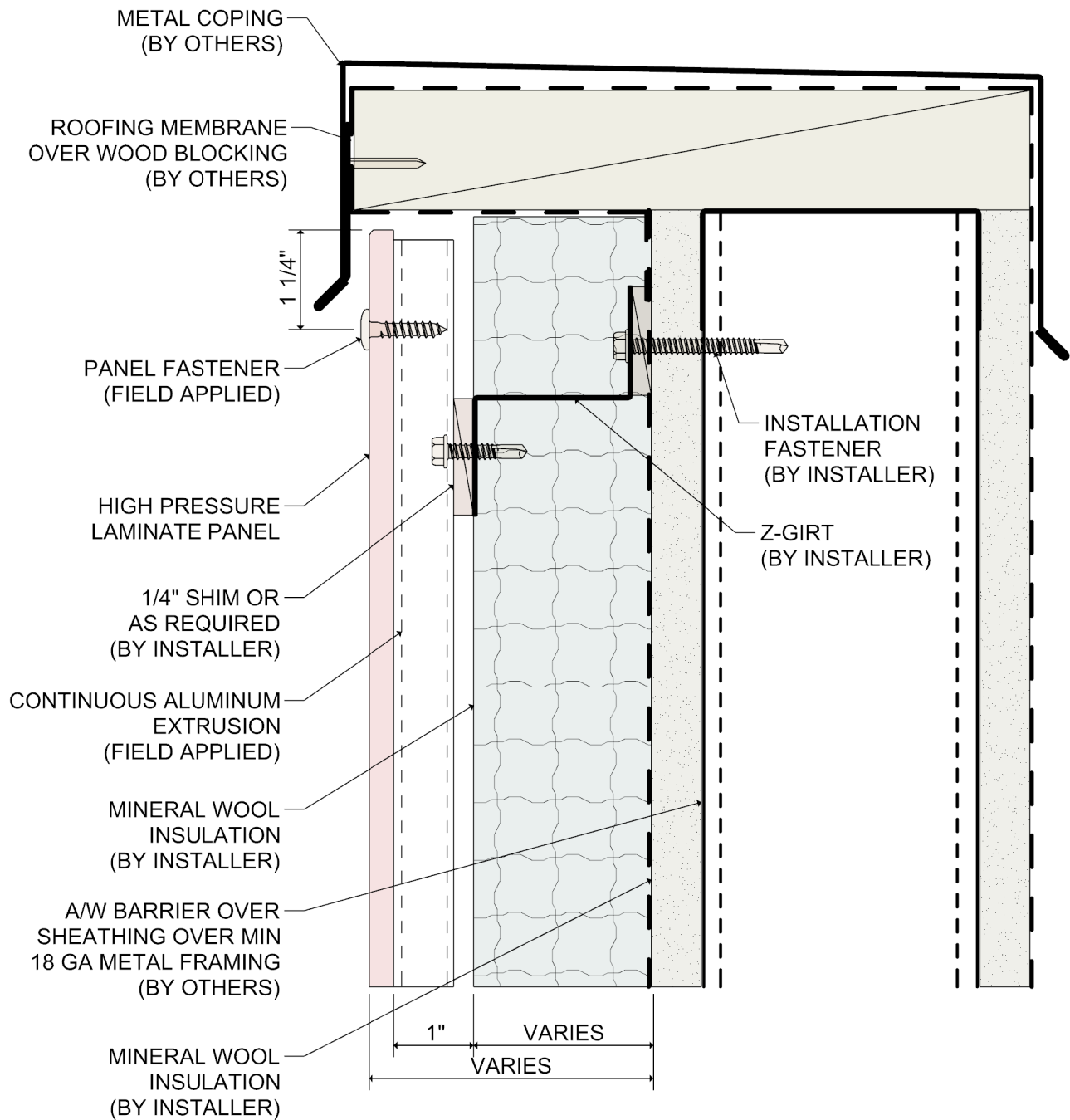
DETAIL:

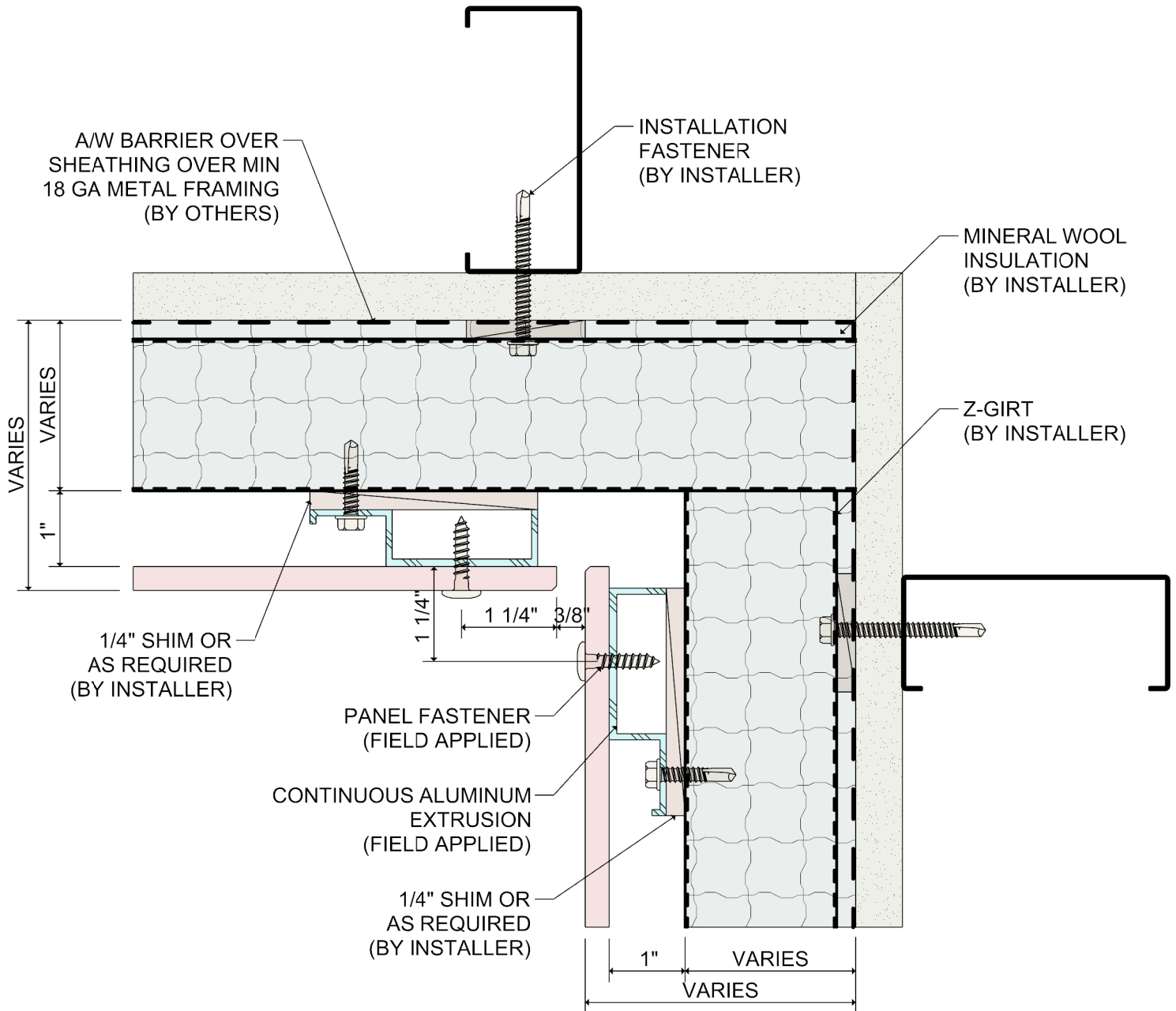
10

SYSTEM 2100

HPL RAINSCREEN

TERMINATION @ DOOR JAMB





DETAIL:

12

SYSTEM 2100

HPL RAINSCREEN

INSIDE CORNER

