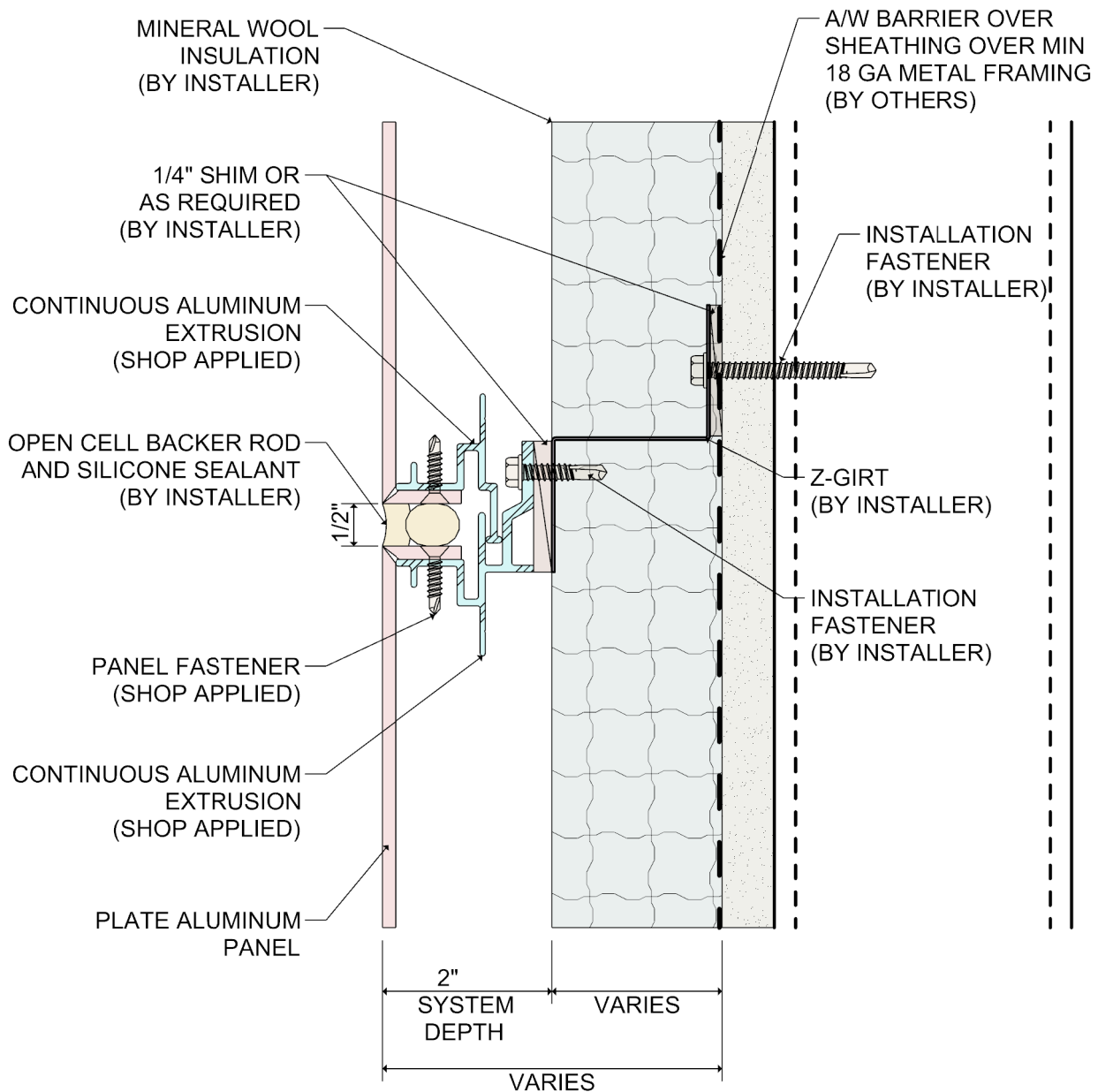




System 3100 Plate Aluminum Wet Seal Attachment System Details with Mineral Wool Insulation

Revised 11/2020

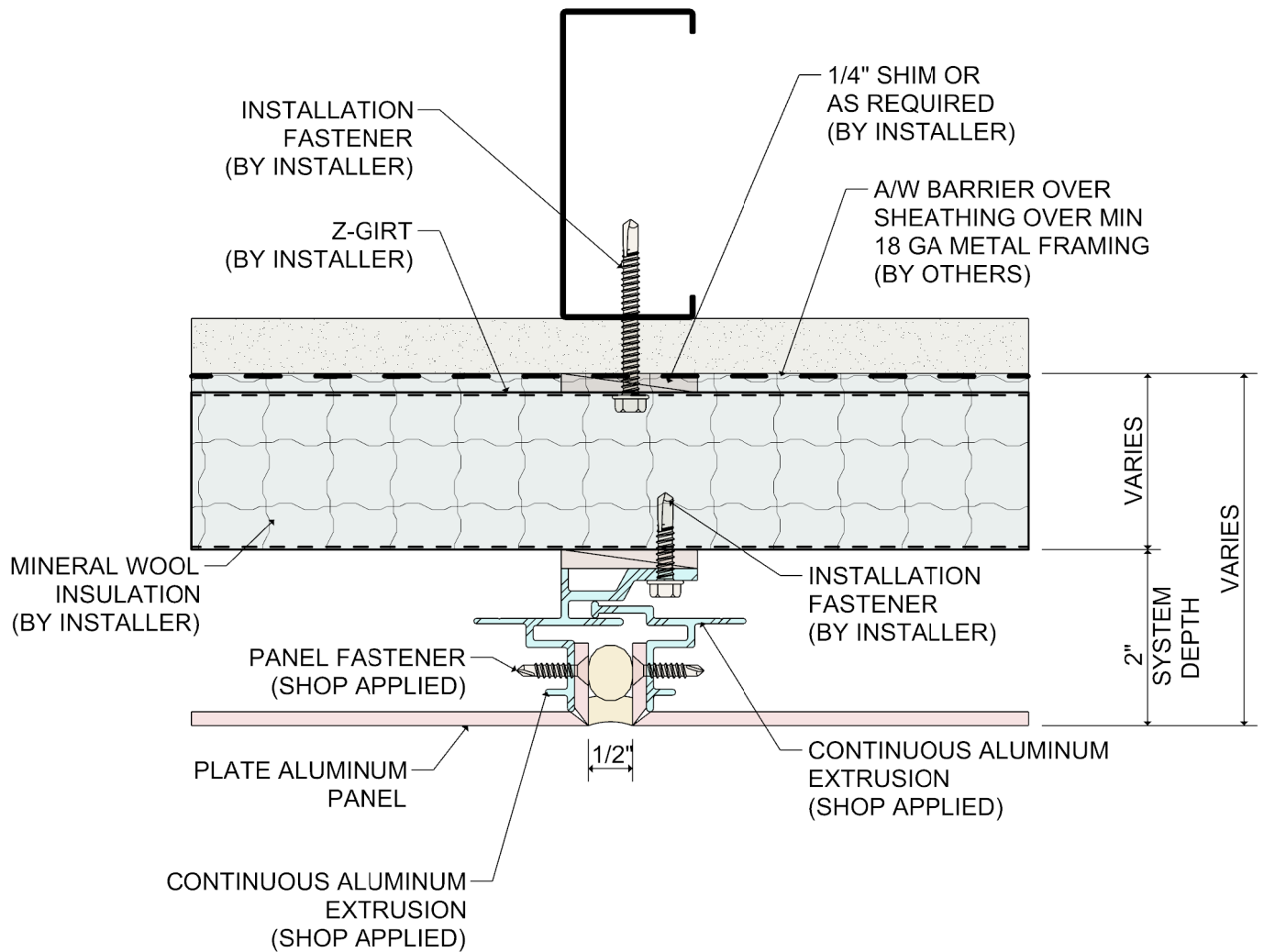


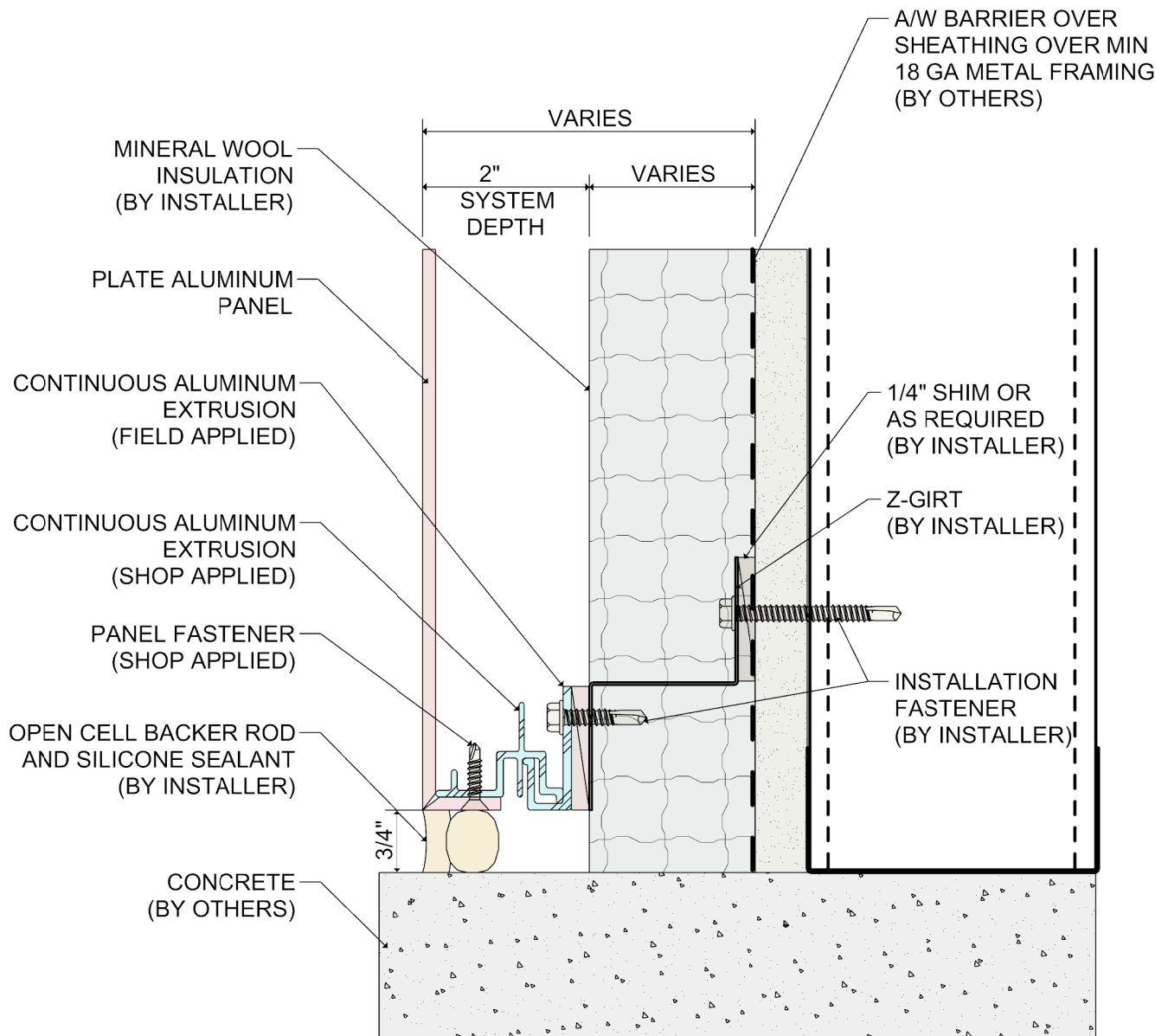
DETAIL:

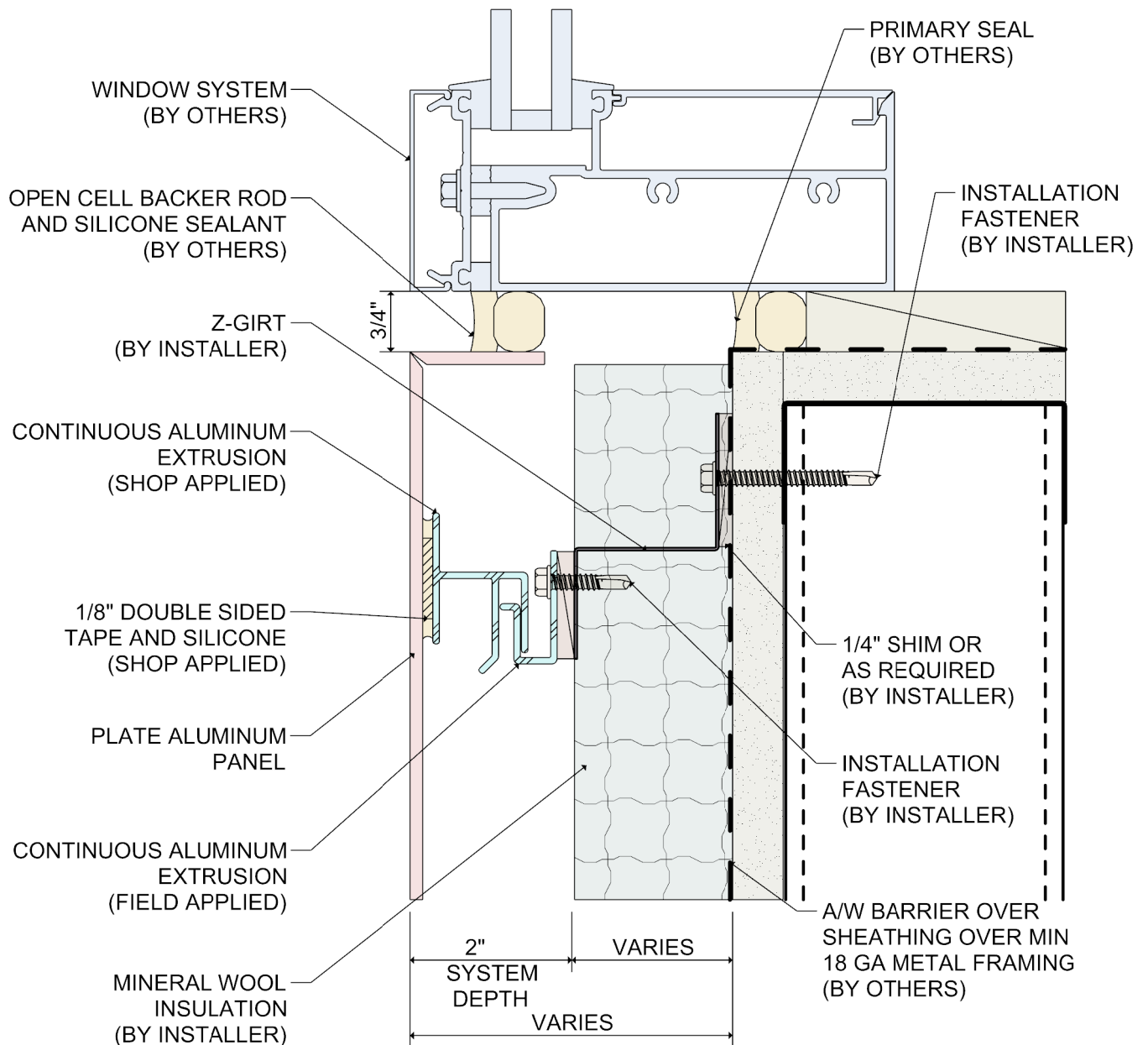
1

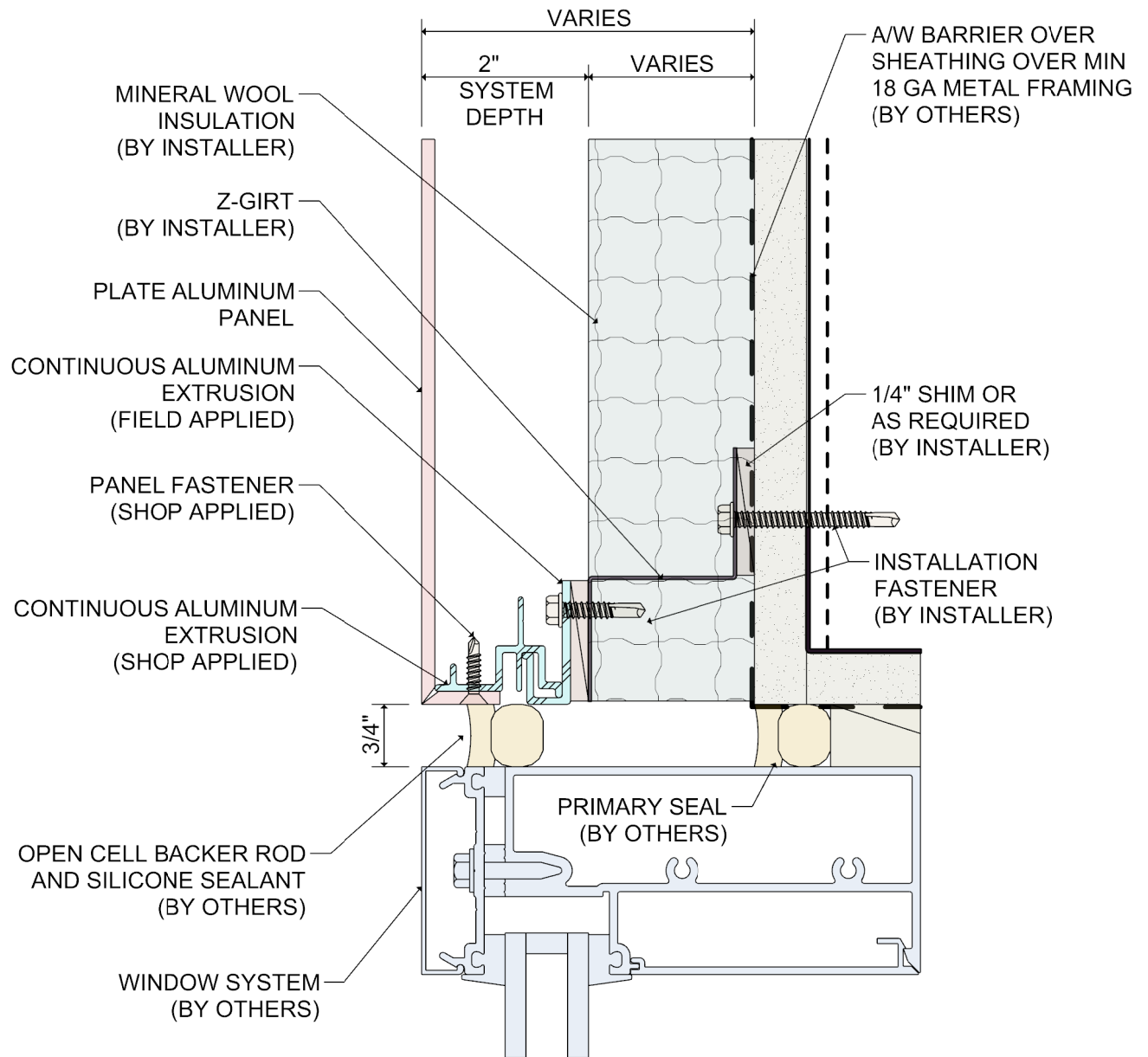
SYSTEM 3100 WET SEAL SYSTEM

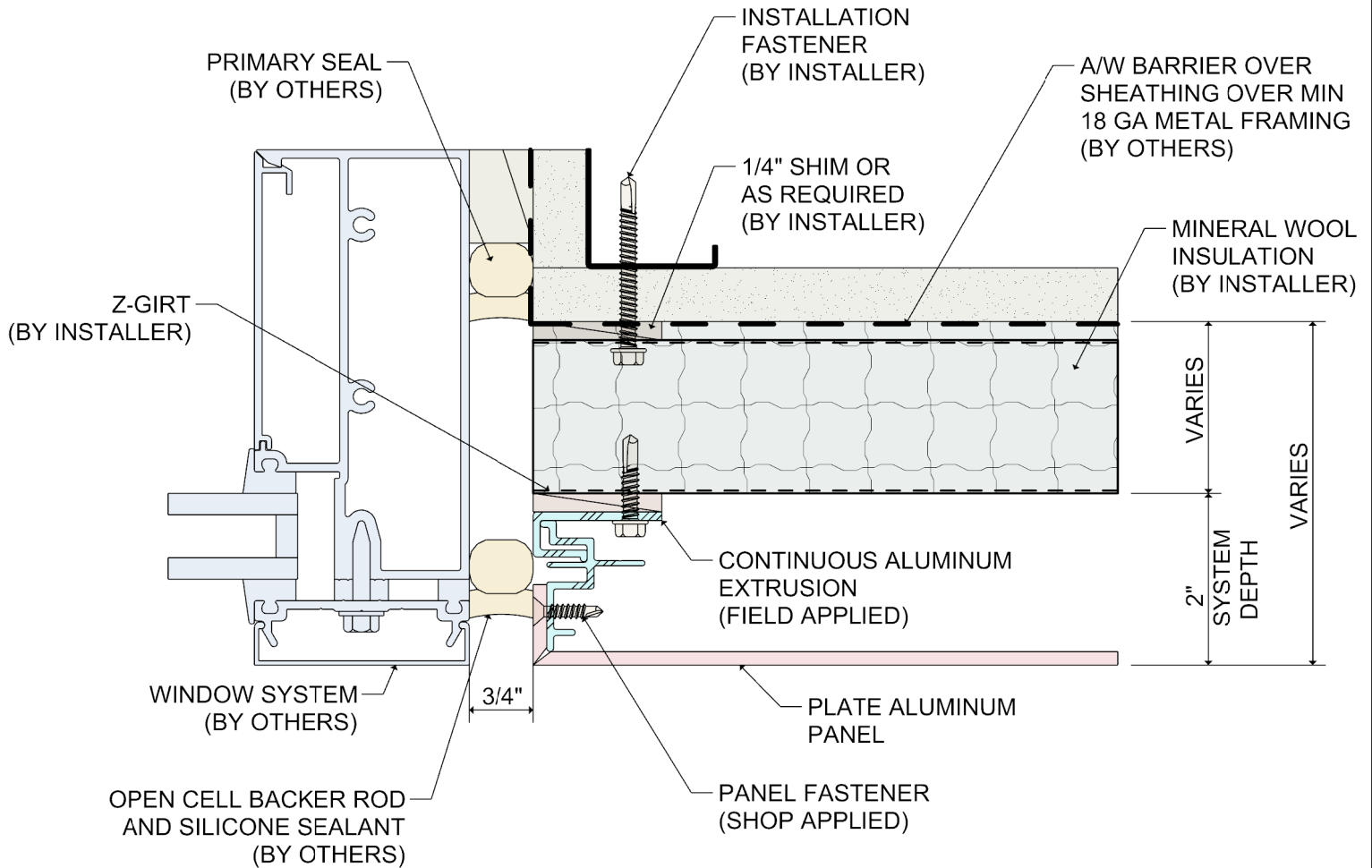
HORIZONTAL JOINT

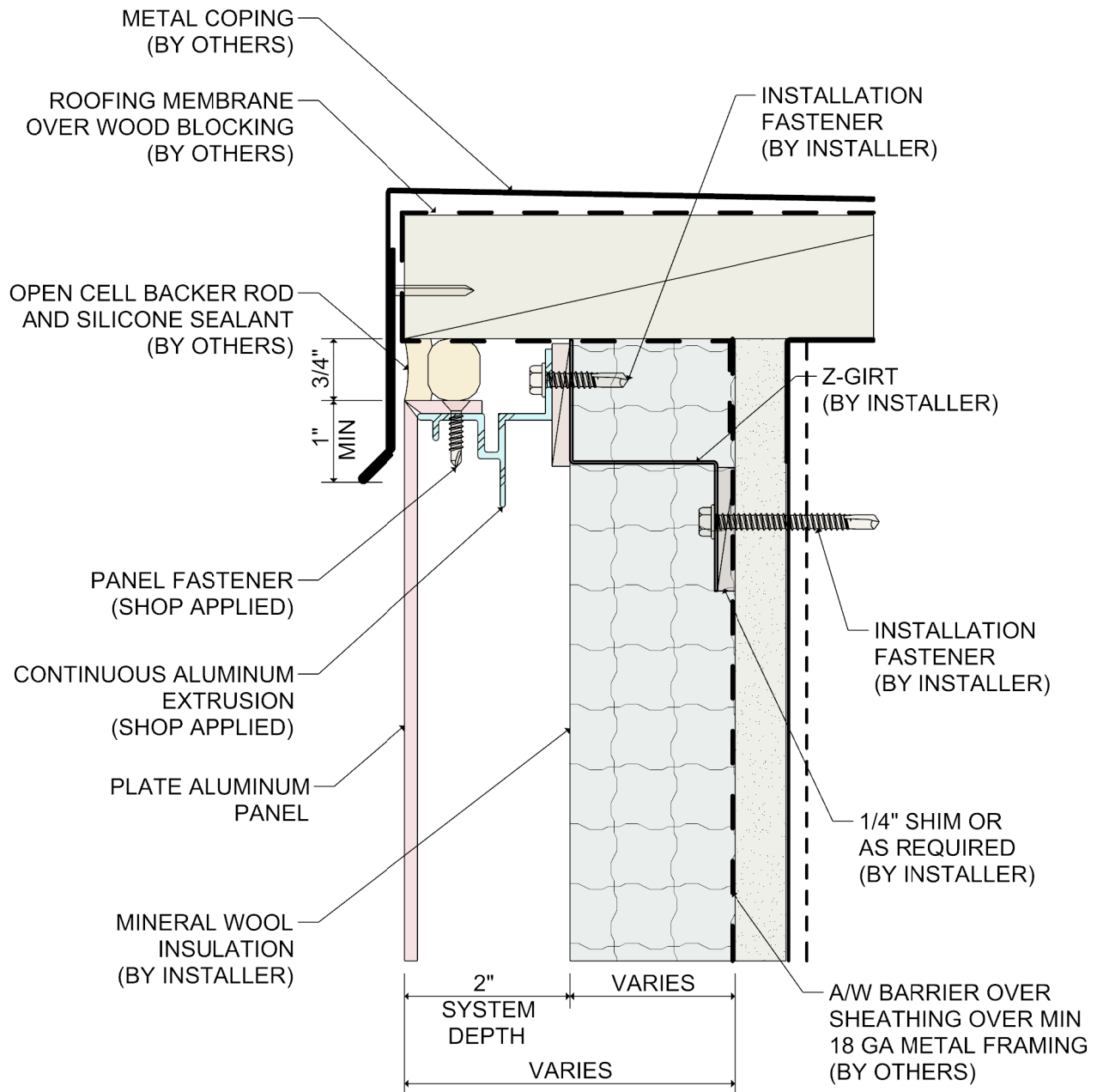


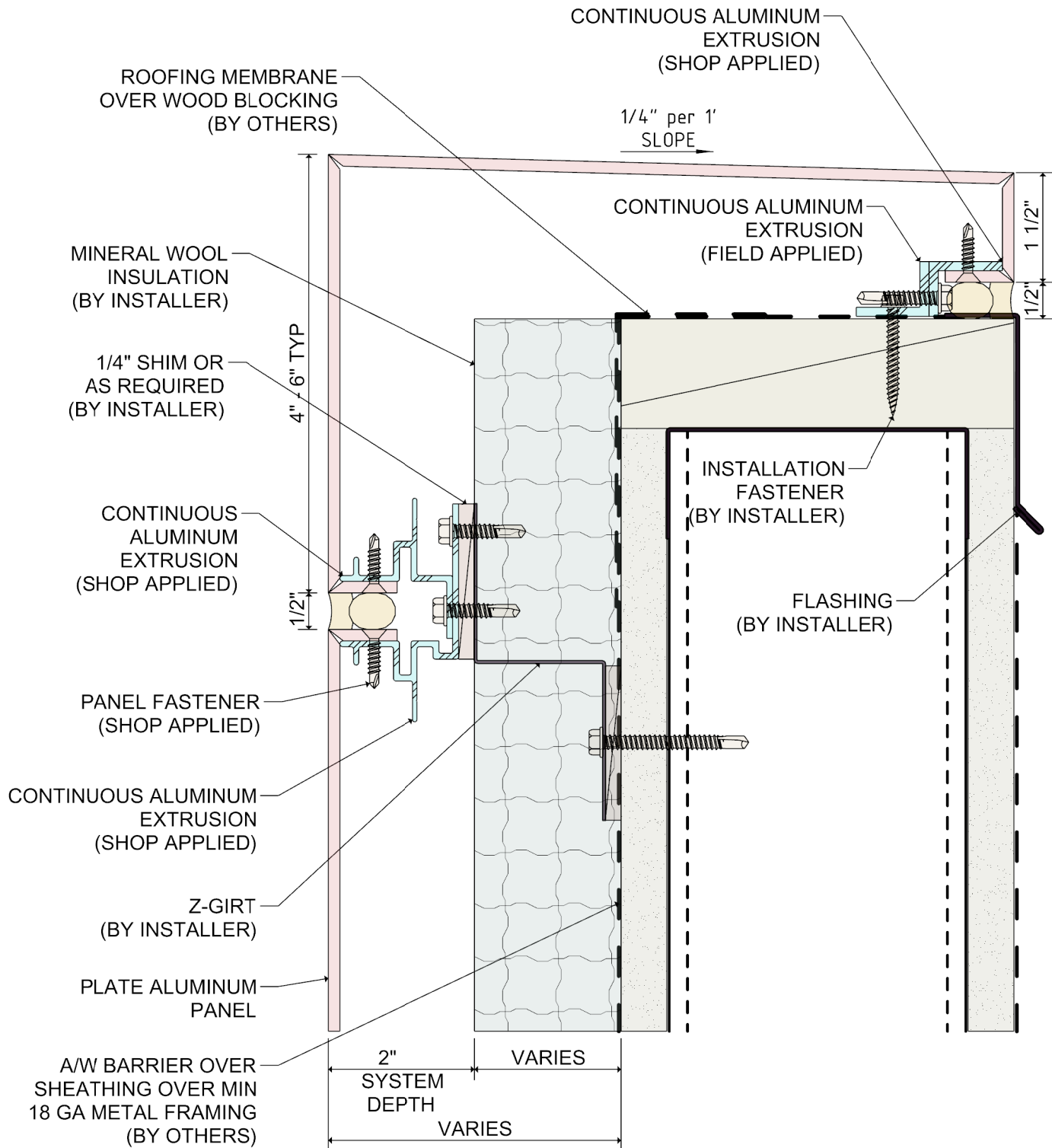


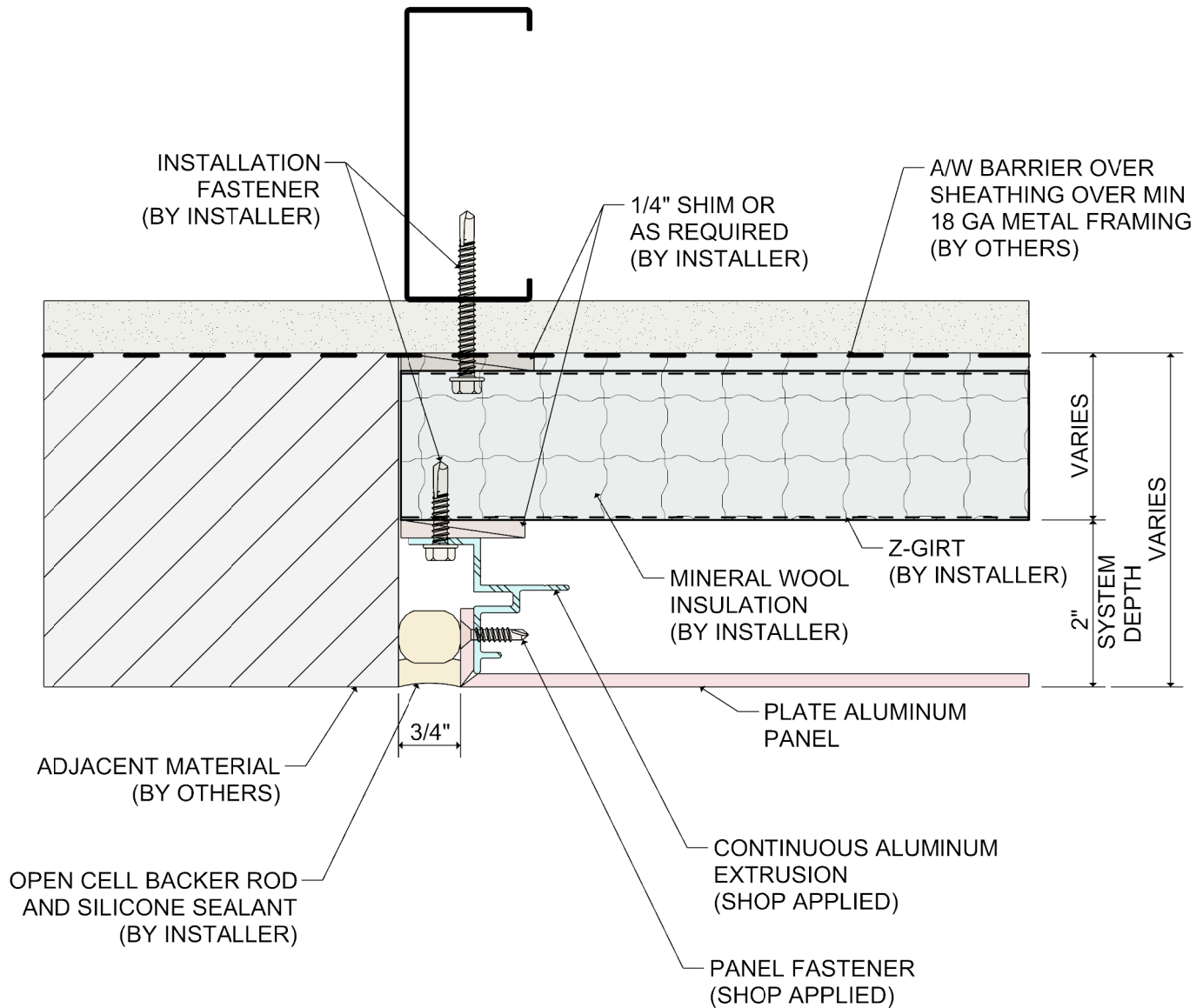


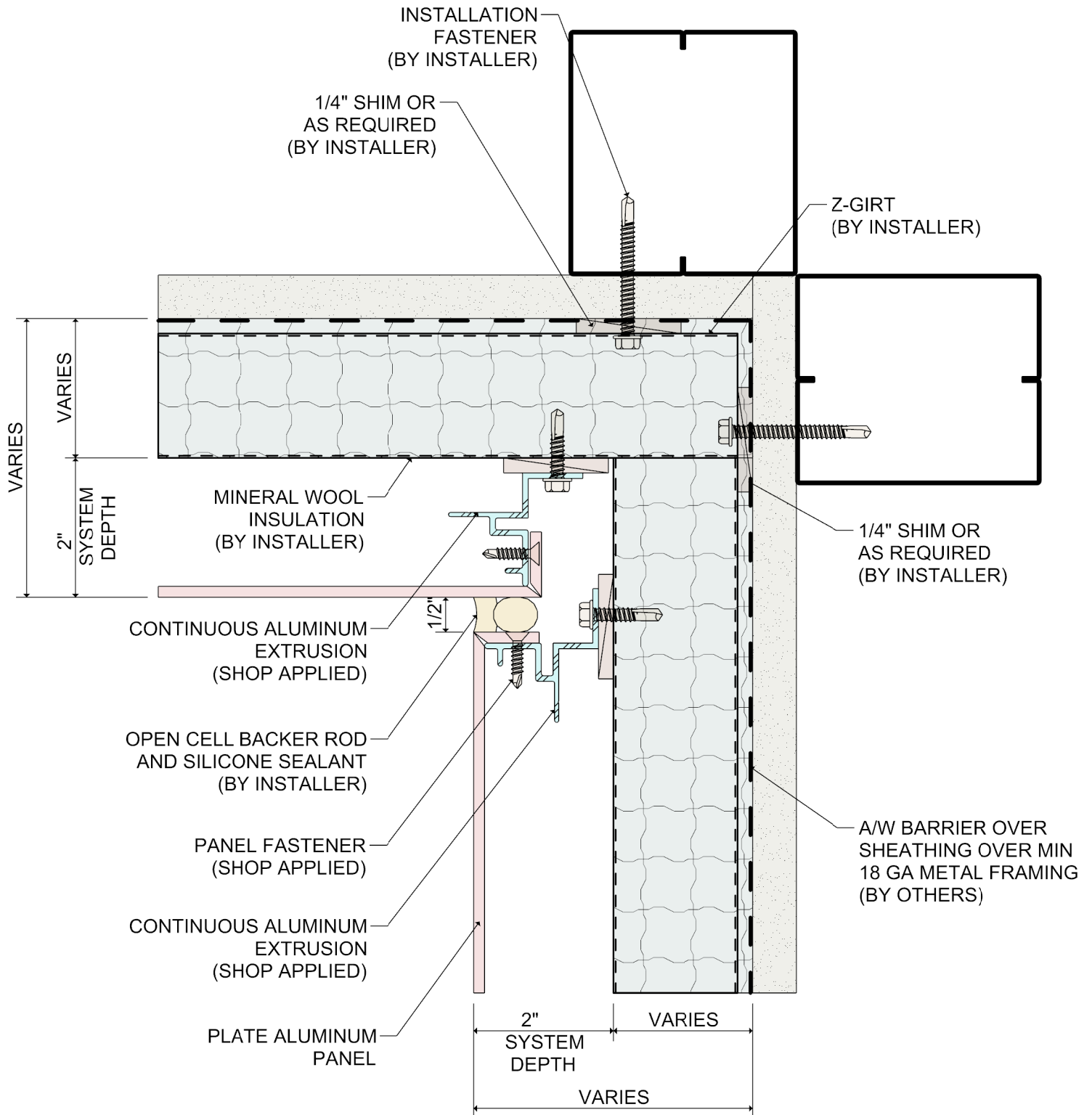


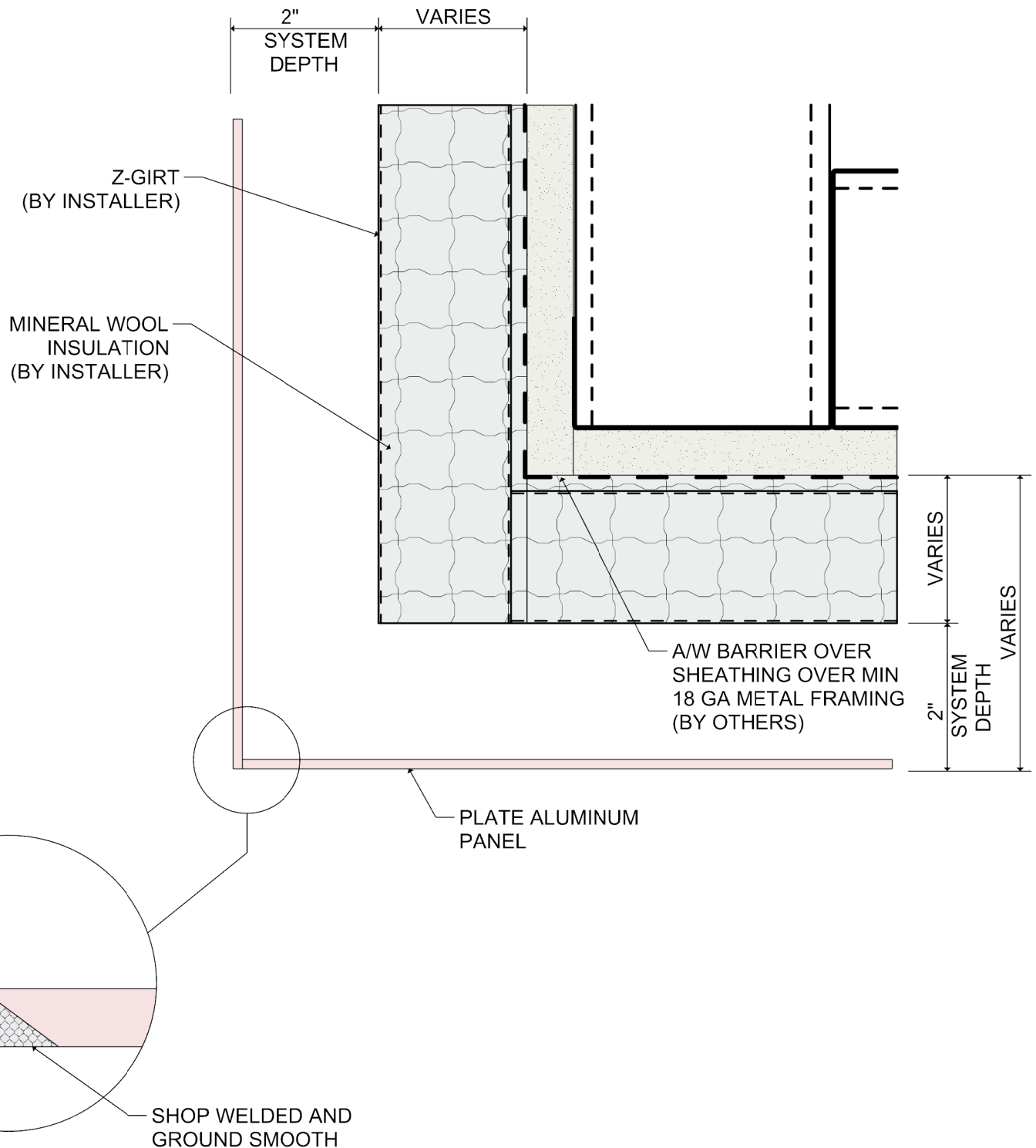












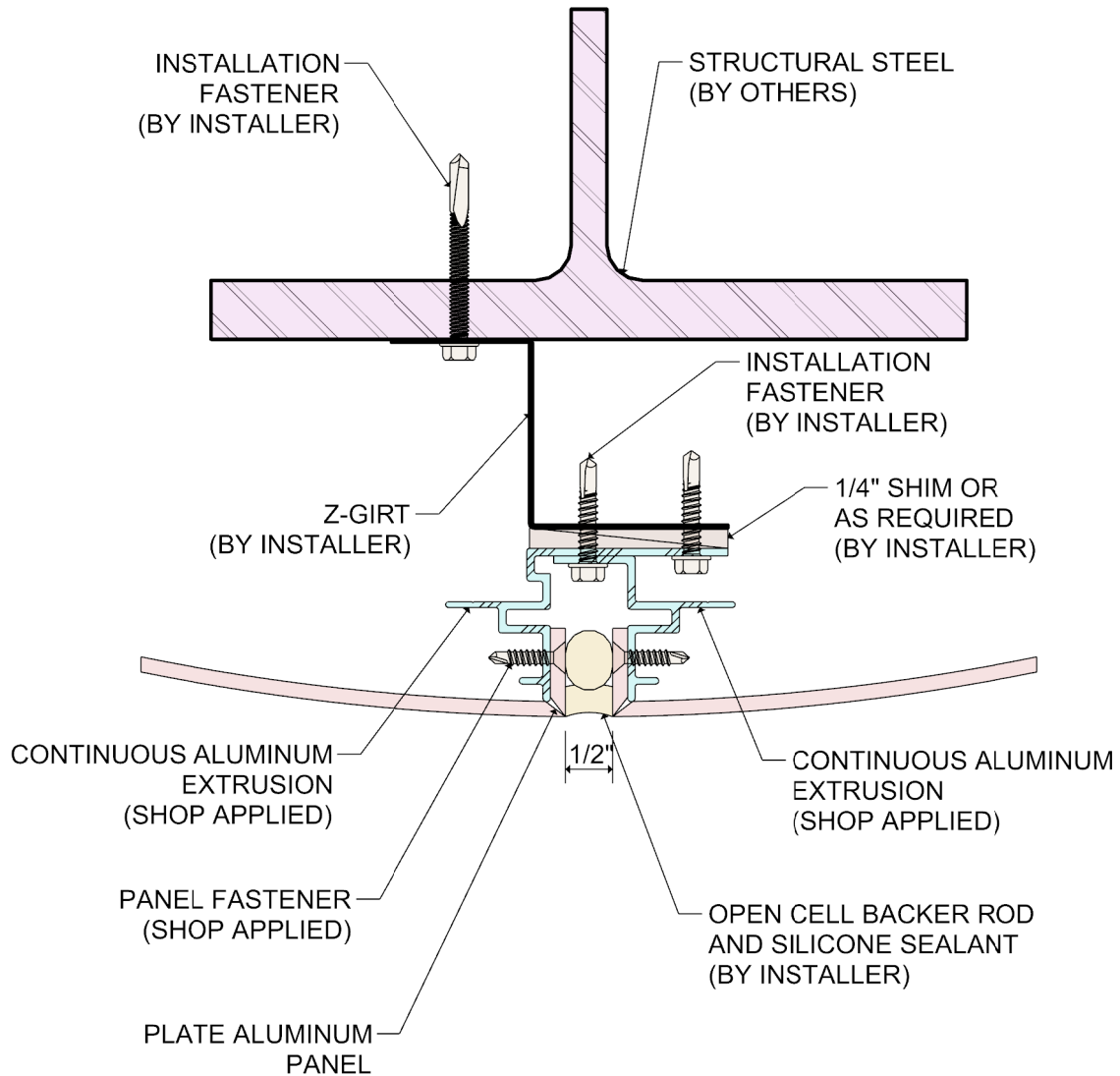
DETAIL:

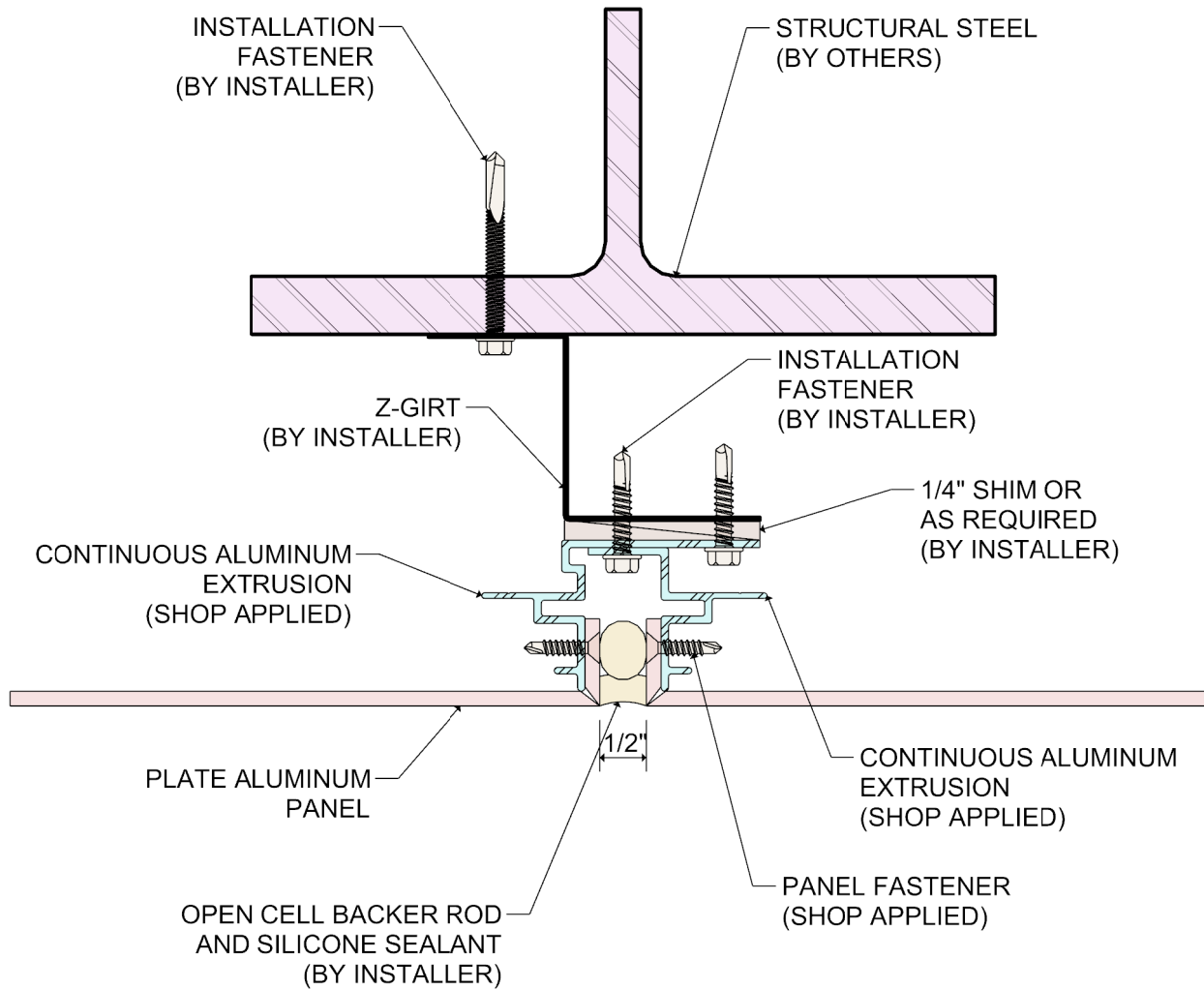
11

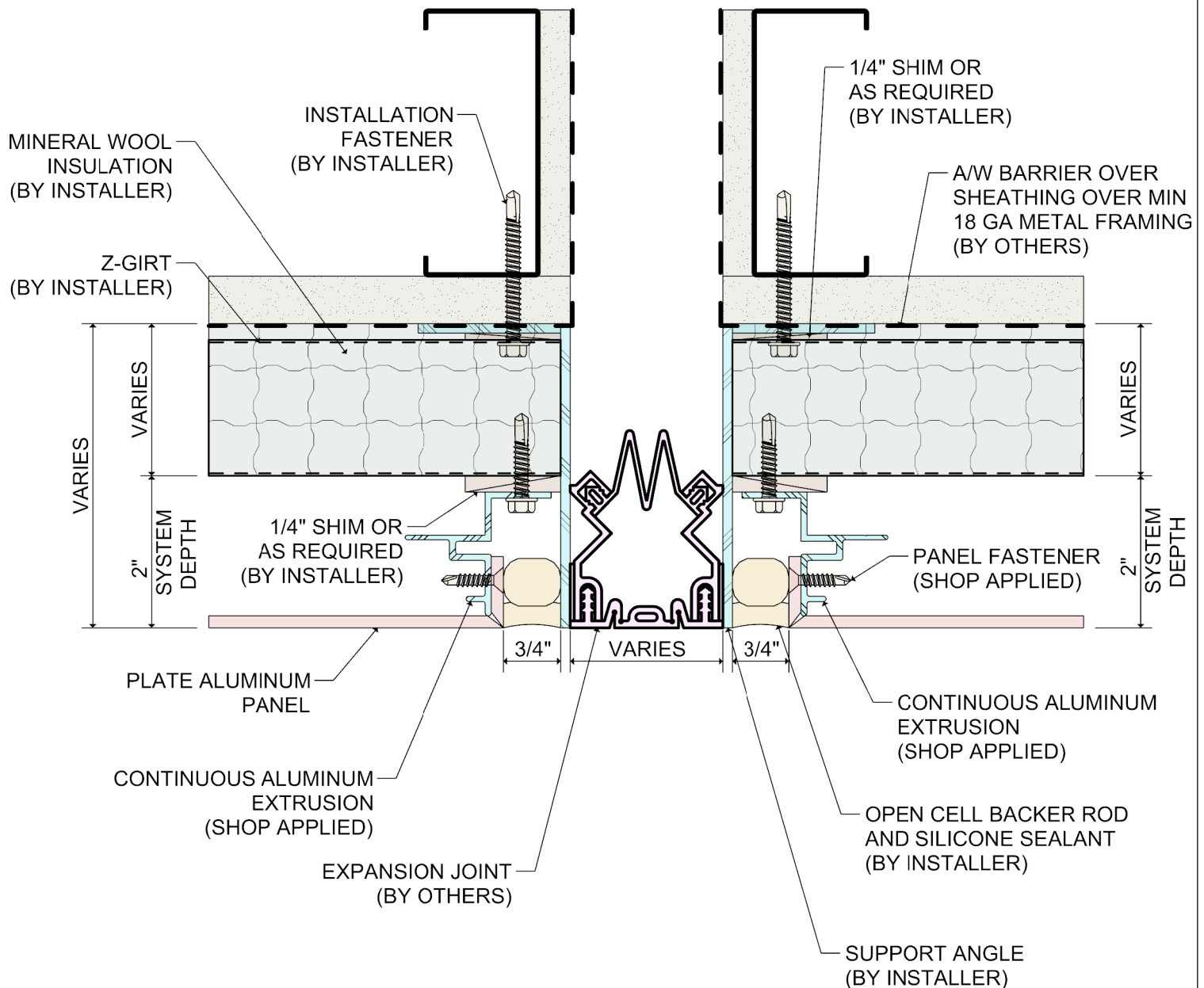
SYSTEM 3100

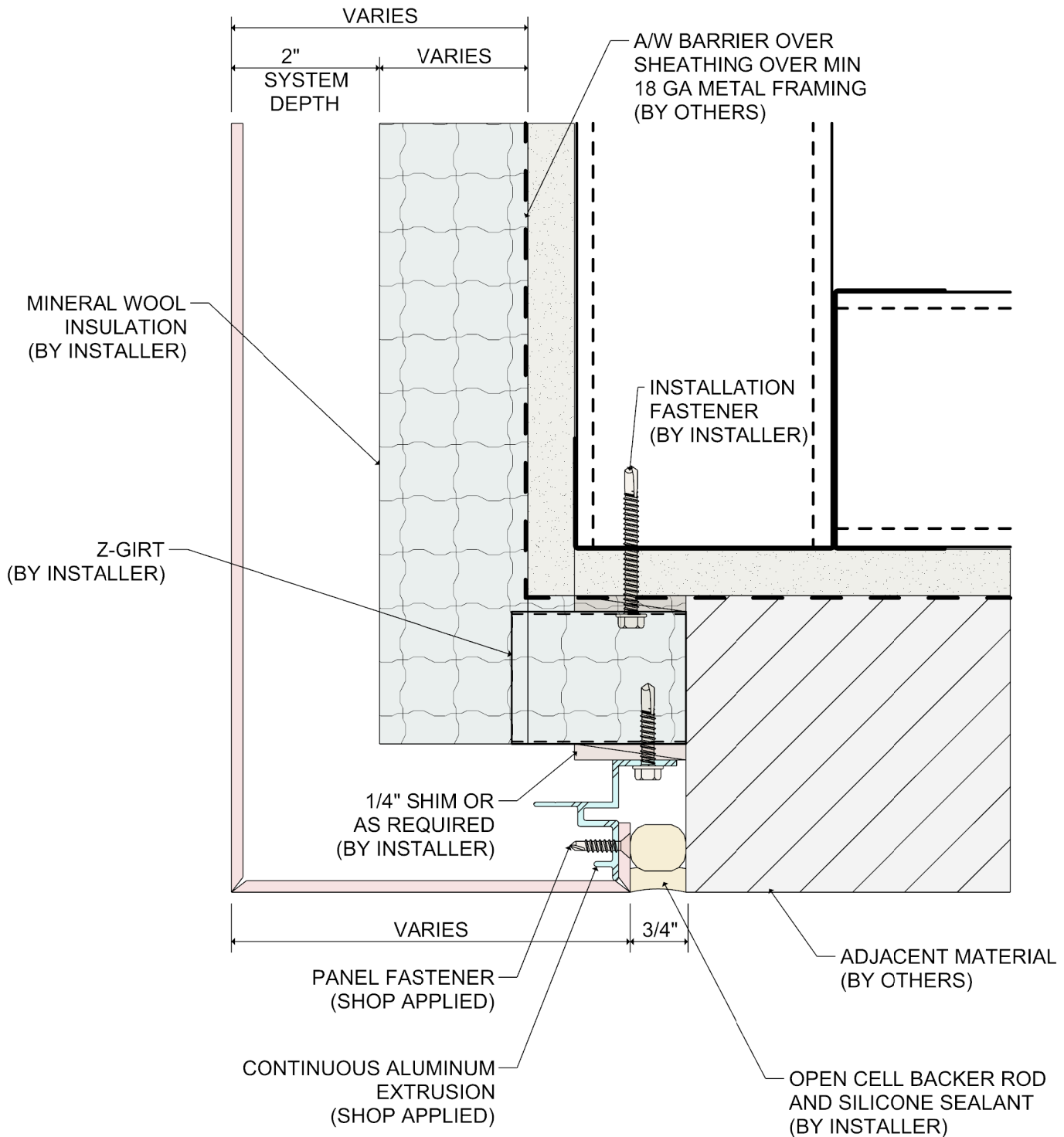
WET SEAL SYSTEM

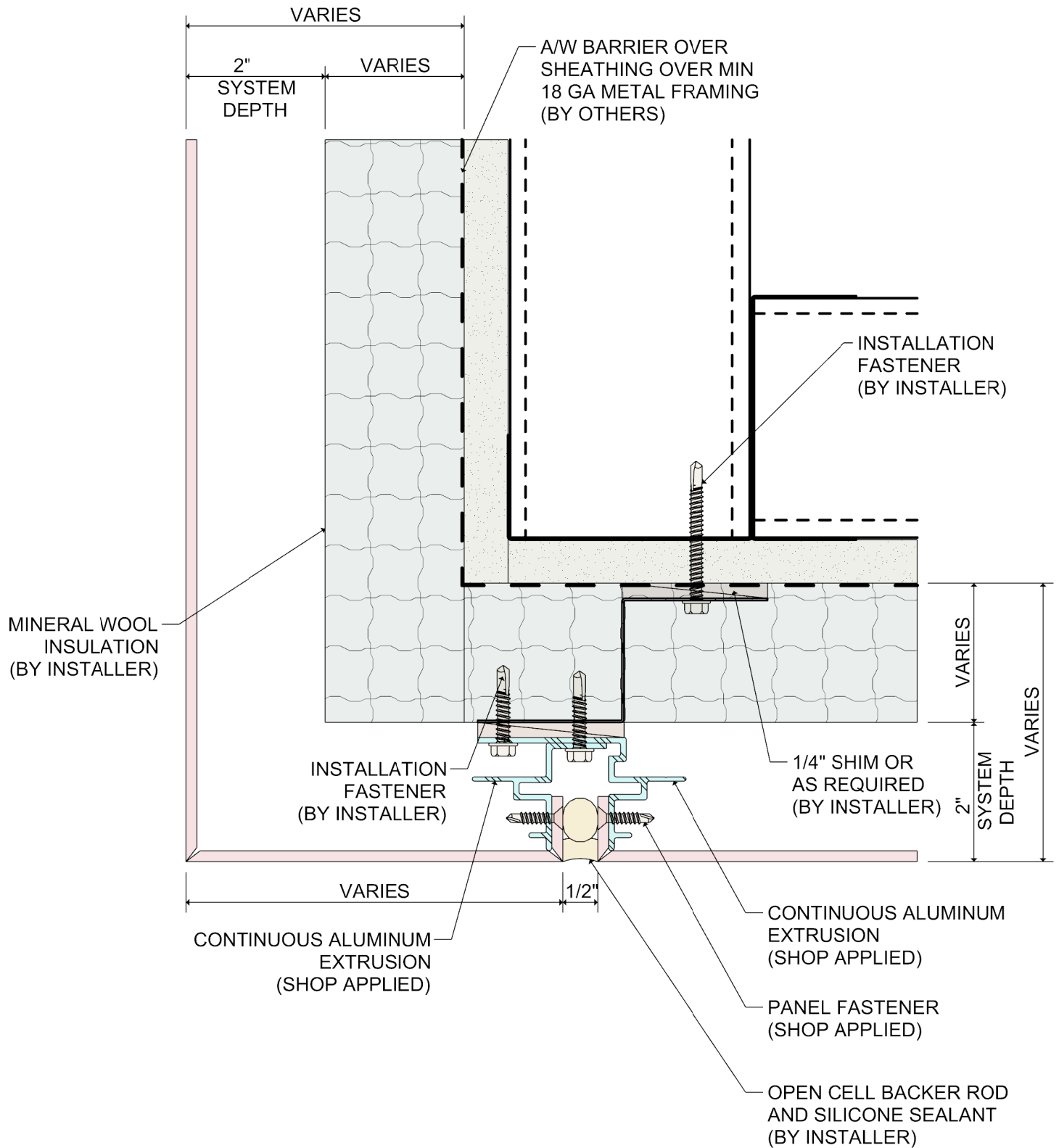
HEM JOINT DETAIL

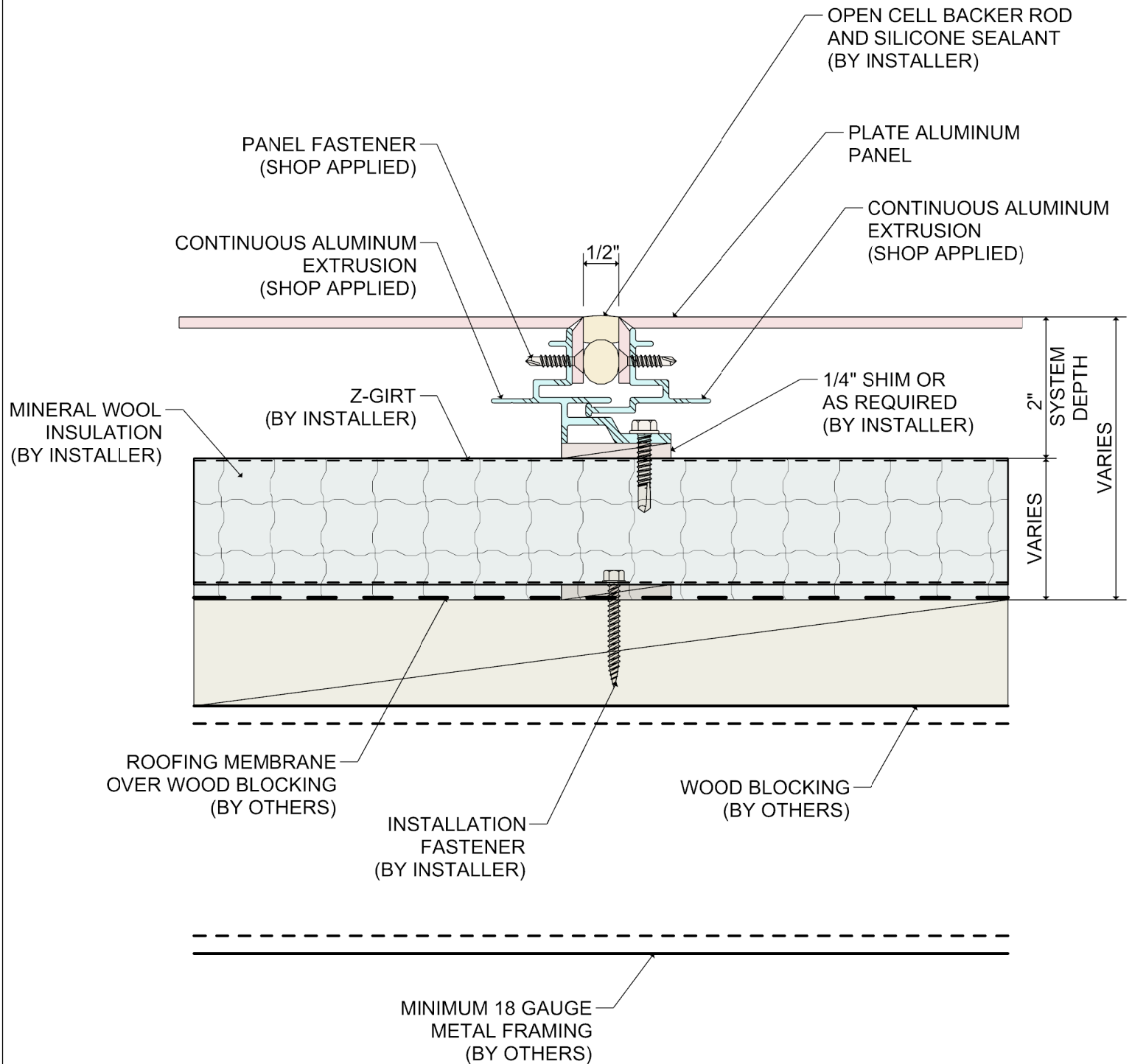












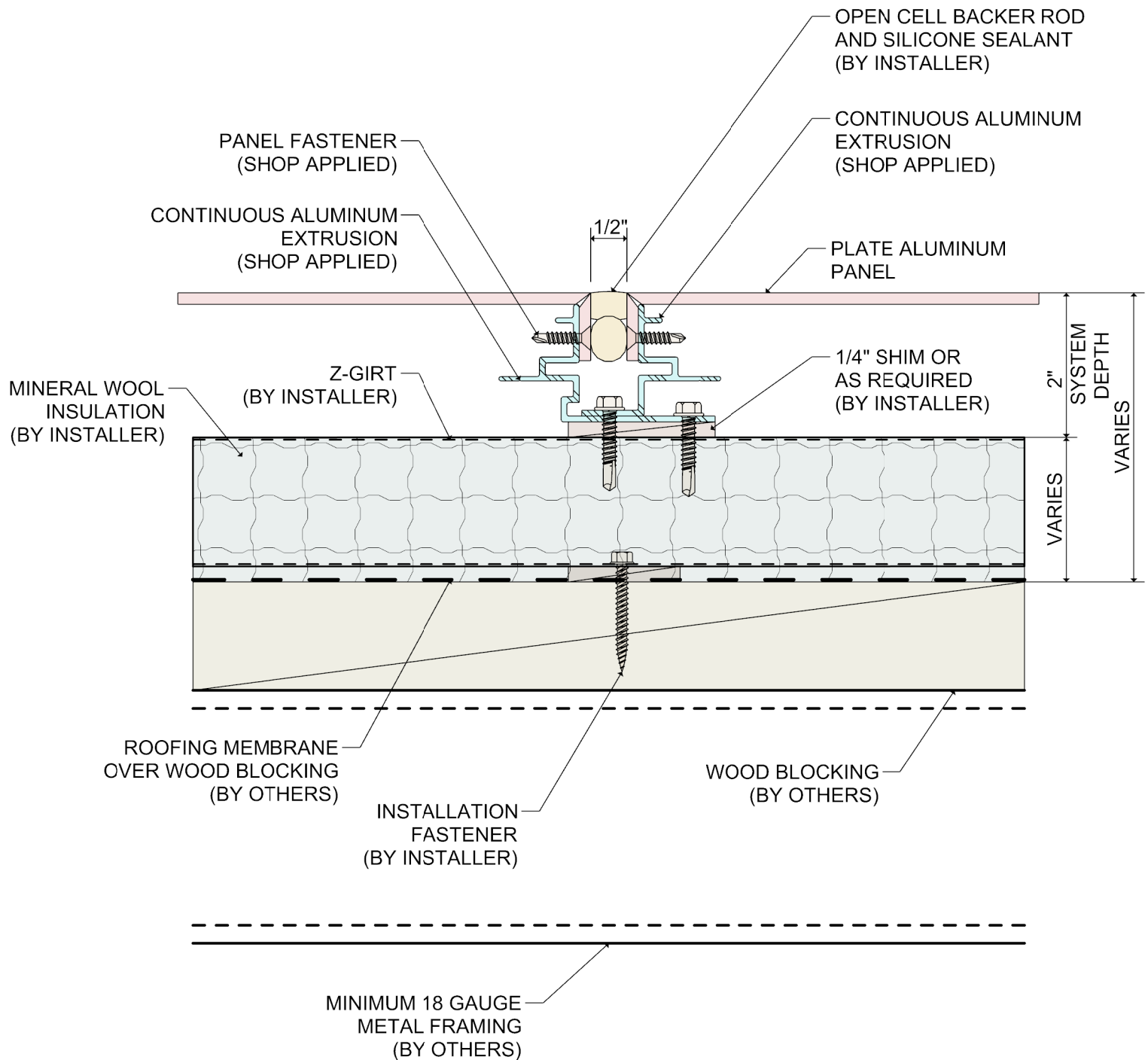
DETAIL:

SYSTEM 3100

WET SEAL SYSTEM

16

SKYWARD FACING JOINT- THERMAL EXPANSION



DETAIL:

16A

SYSTEM 3100

WET SEAL SYSTEM

SKYWARD FACING JOINT- HARD FASTENED

