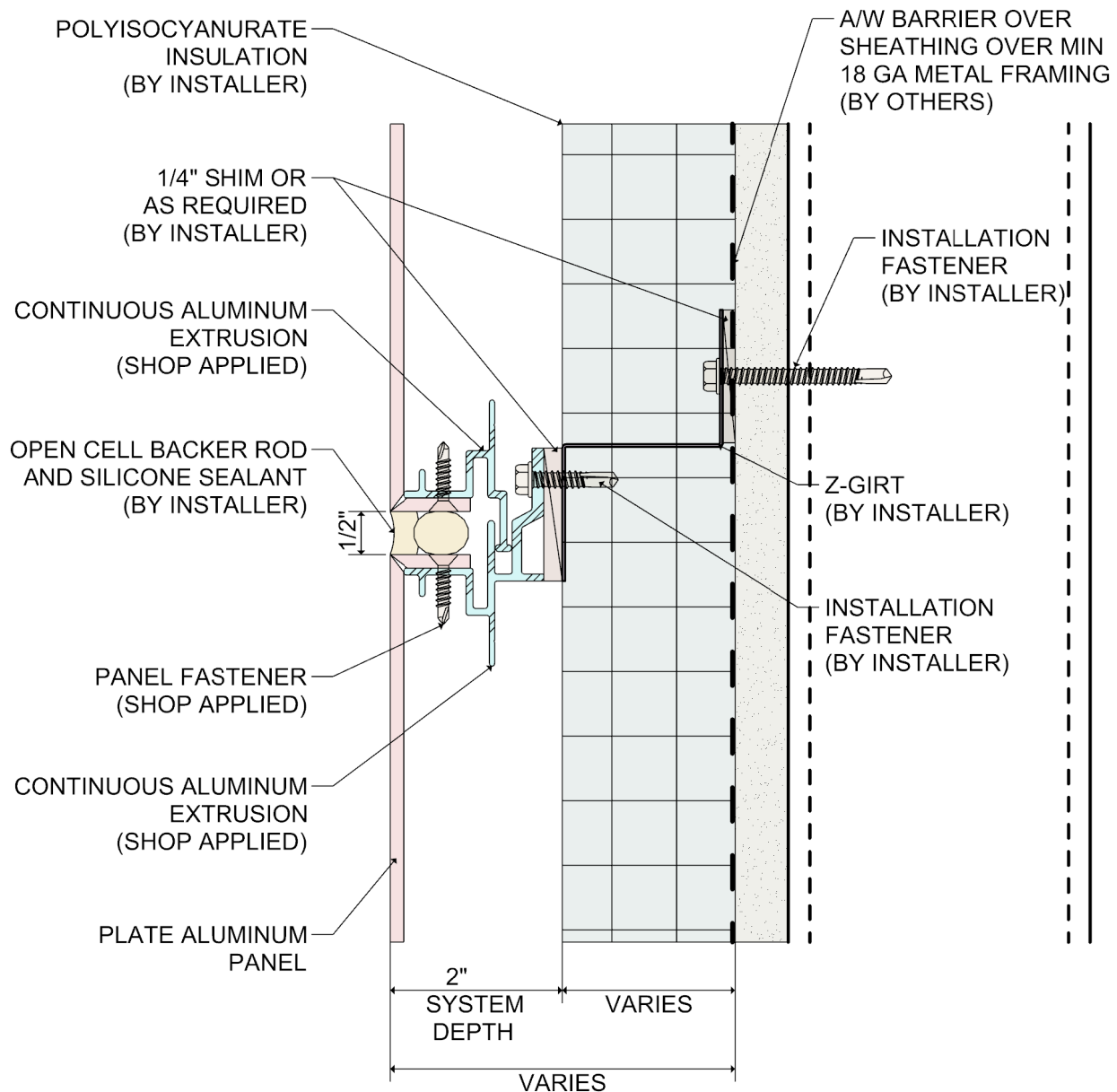
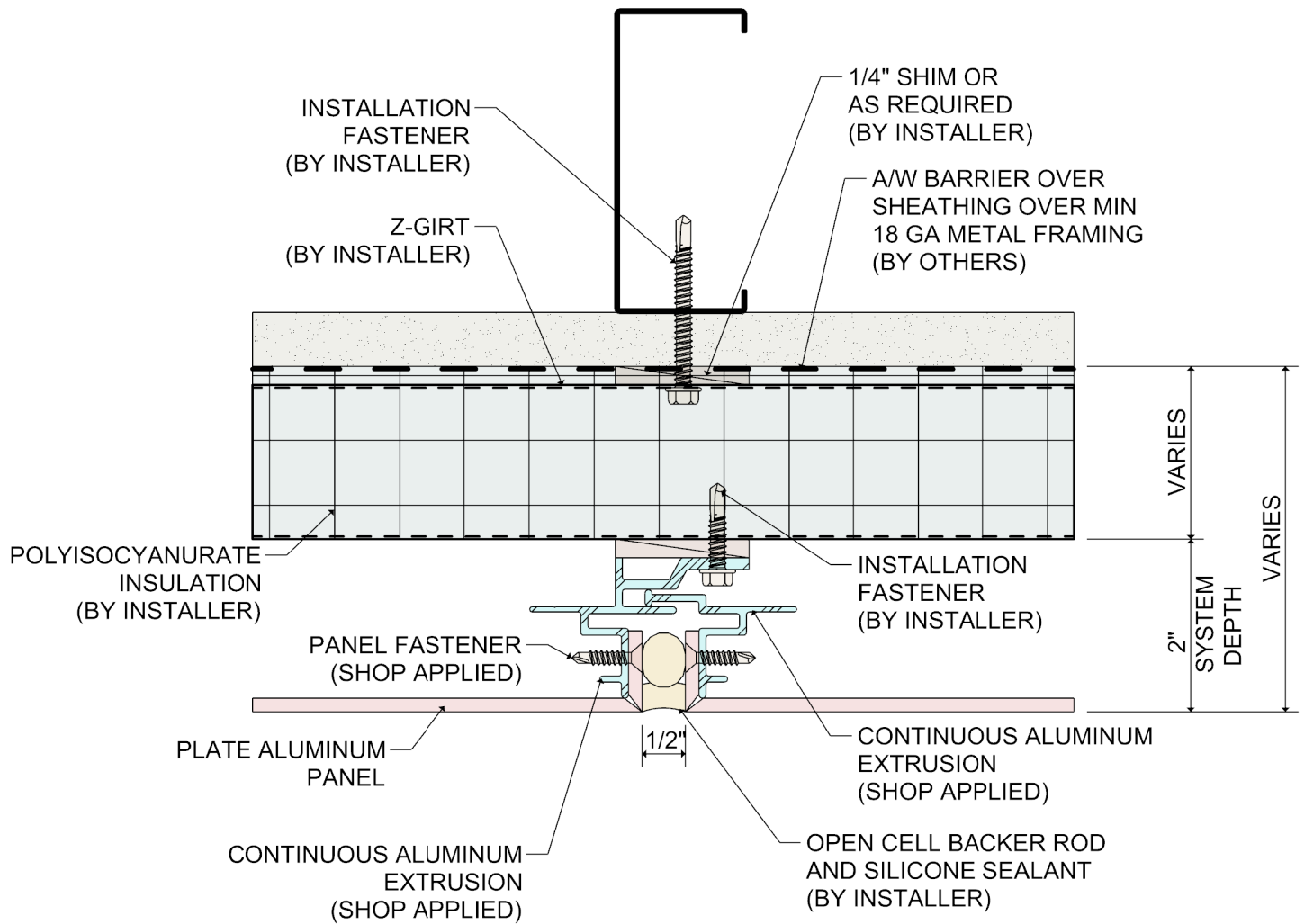
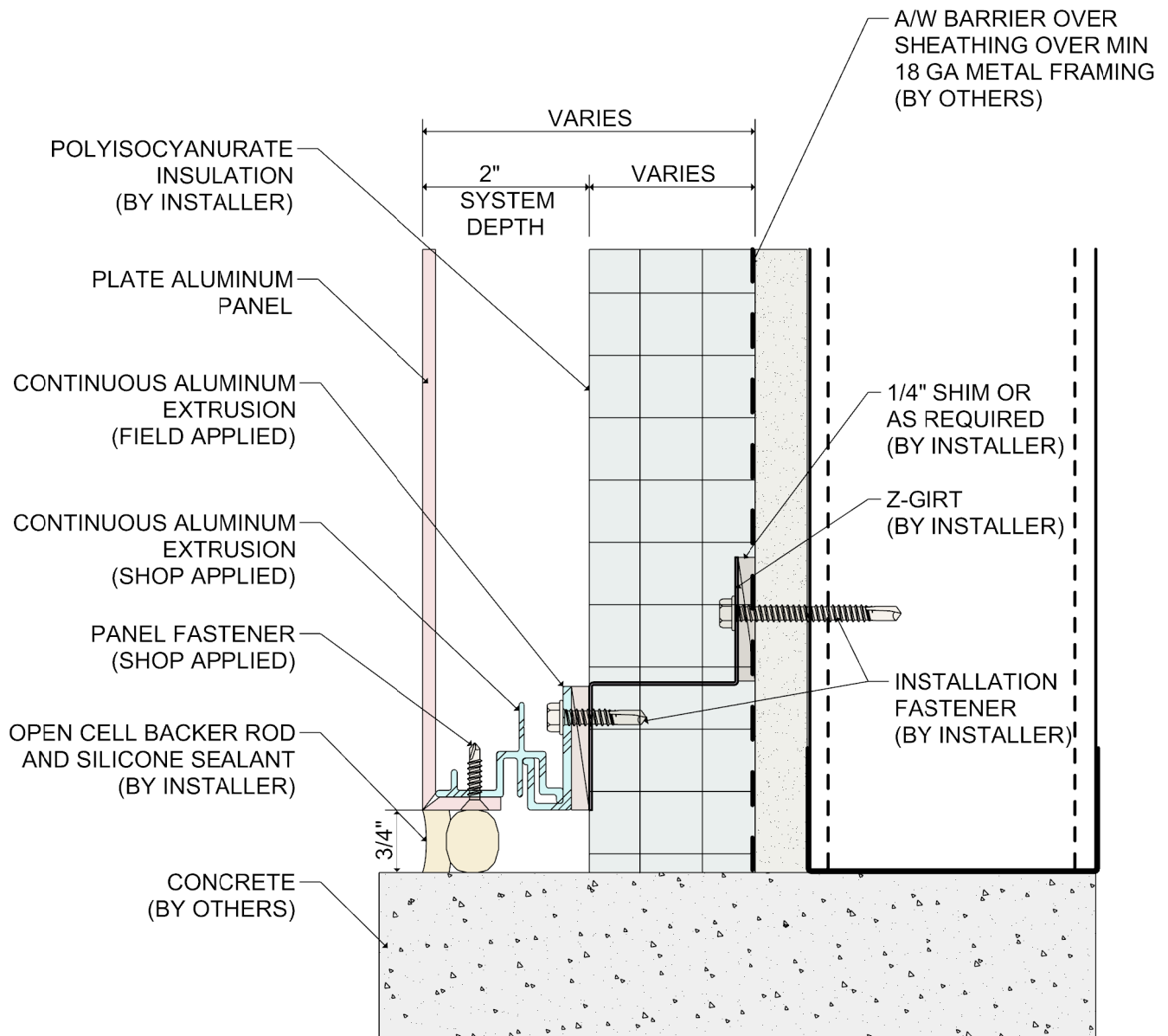


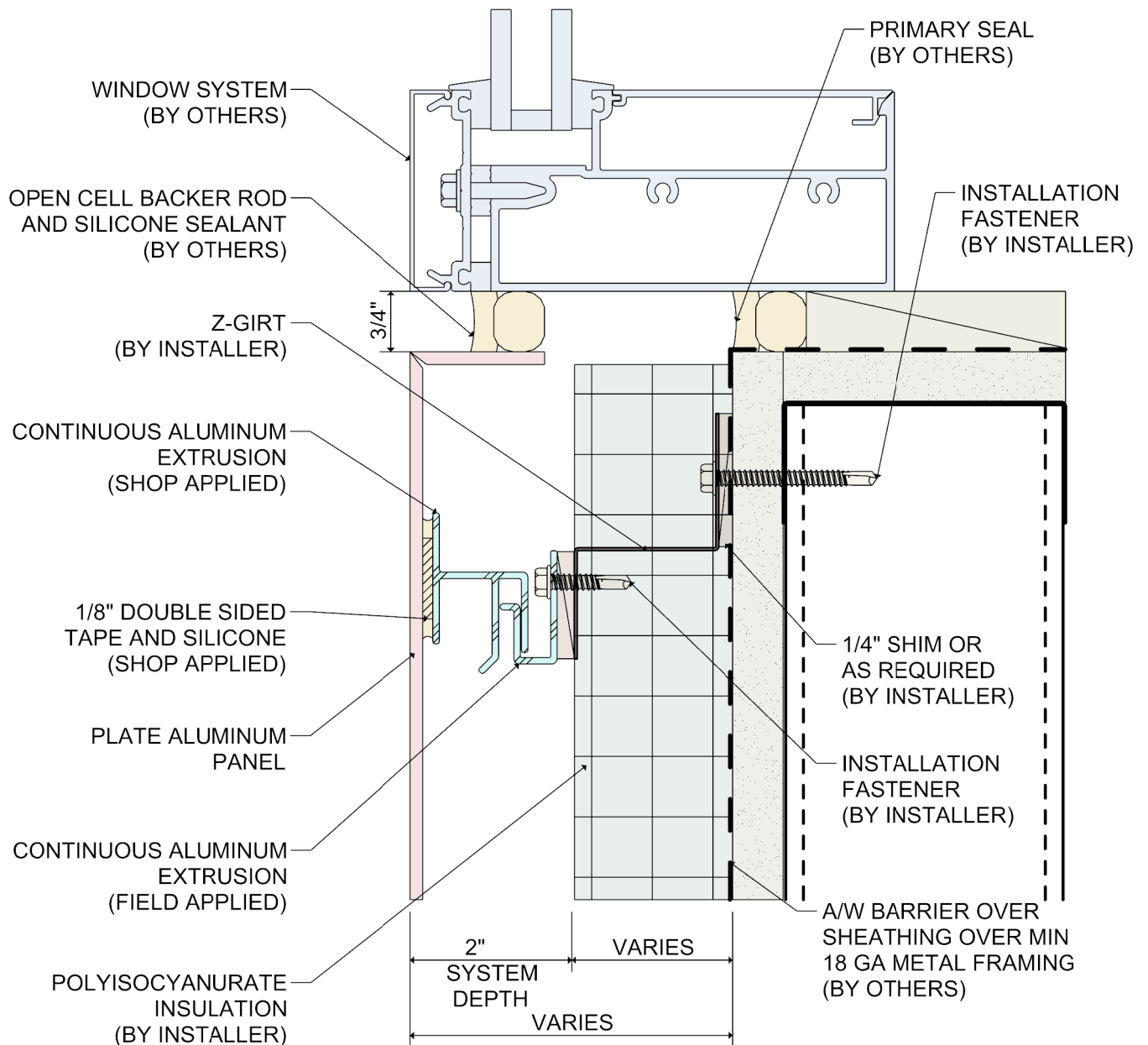
System 3100 Plate Aluminum Wet Seal Attachment System Details with Polyisocyanurate Insulation

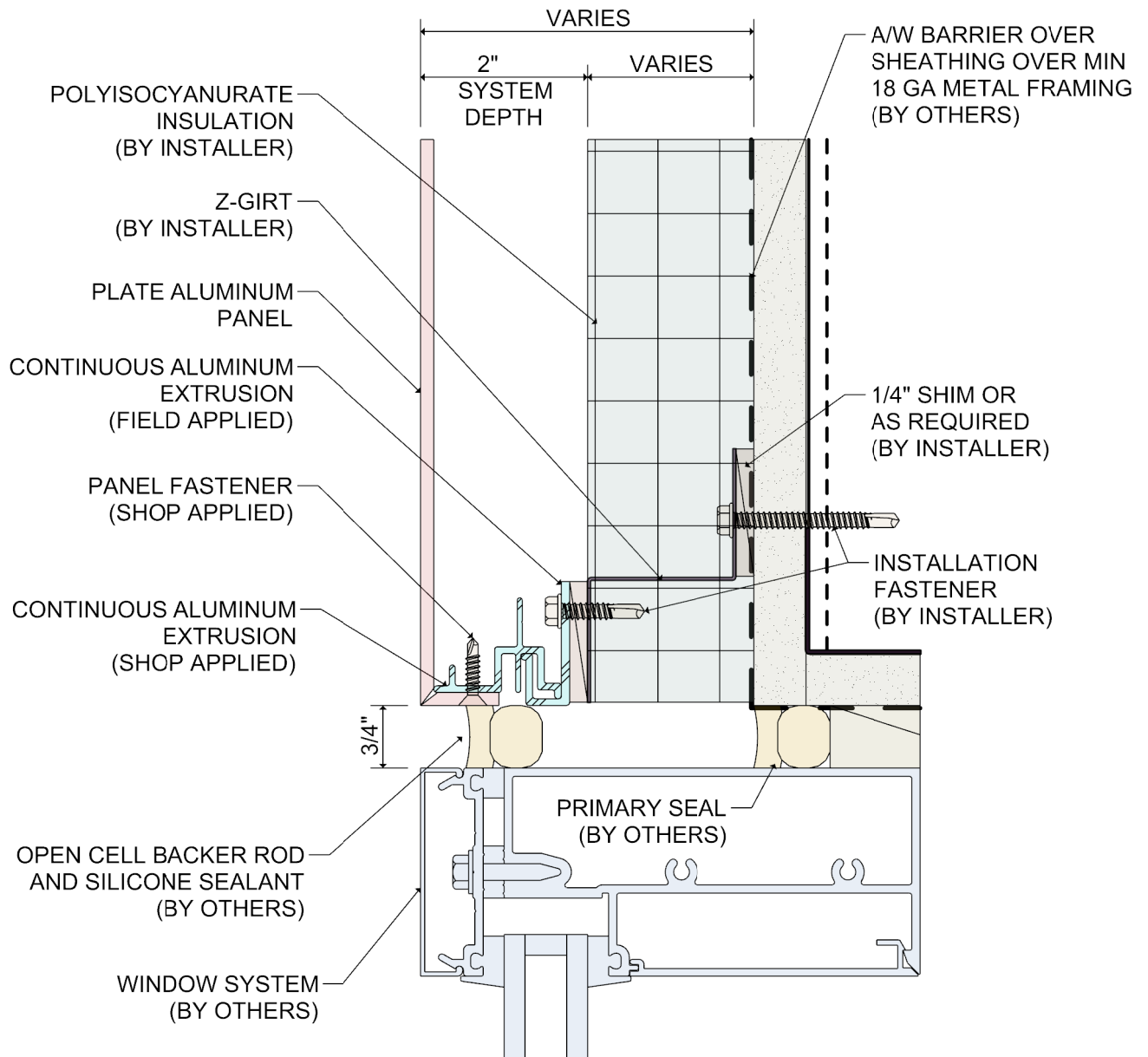
Revised 11/2020

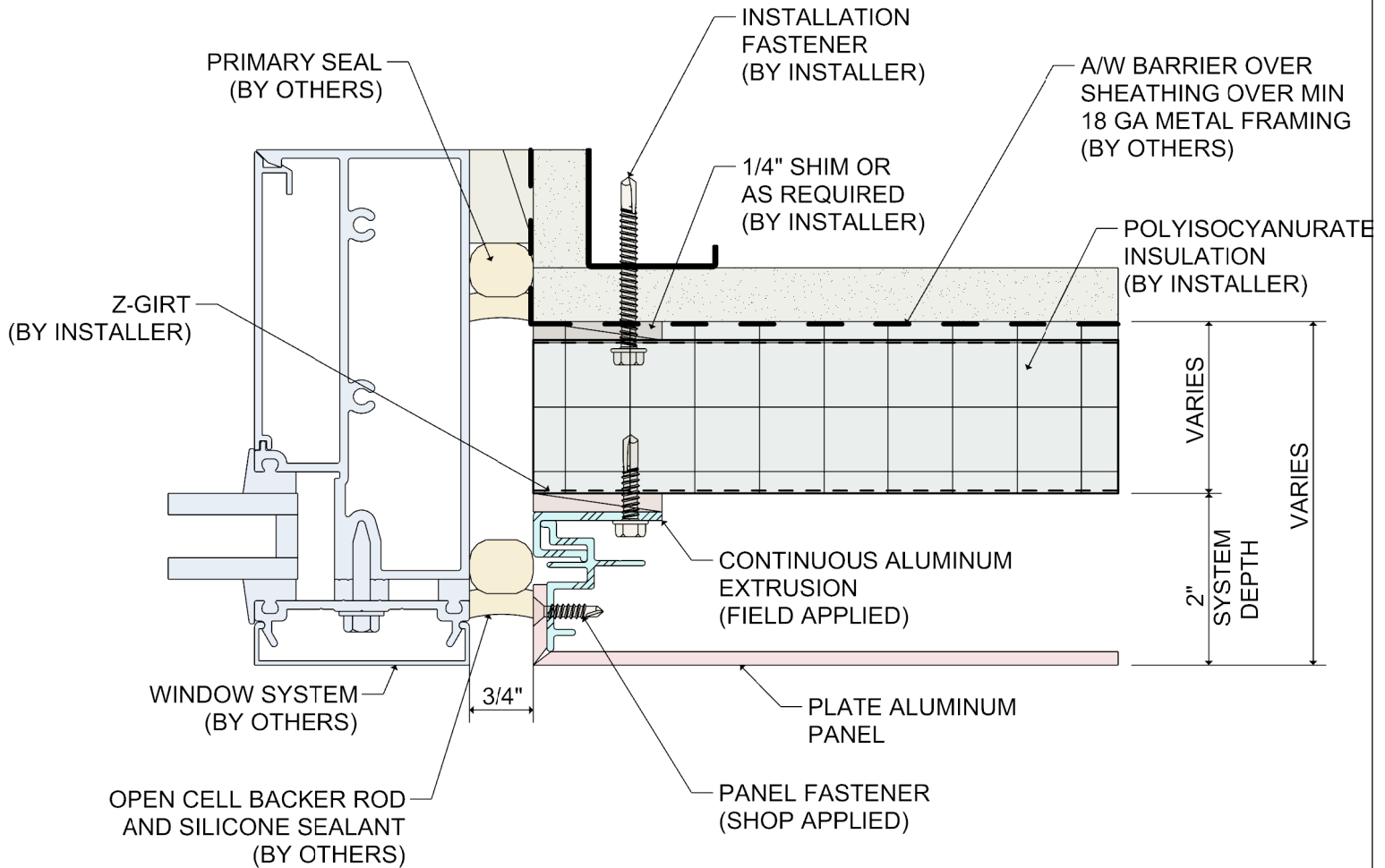


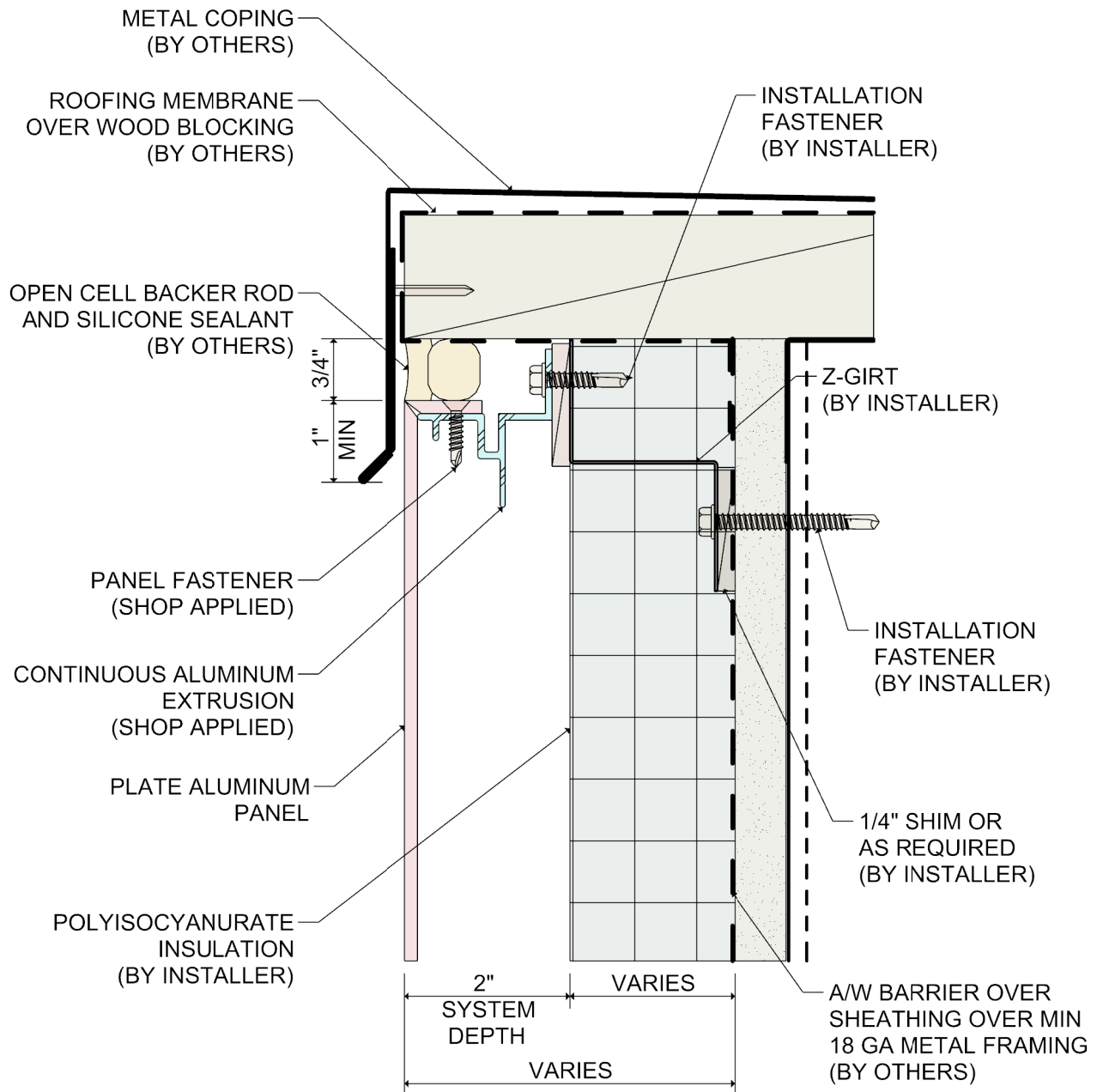


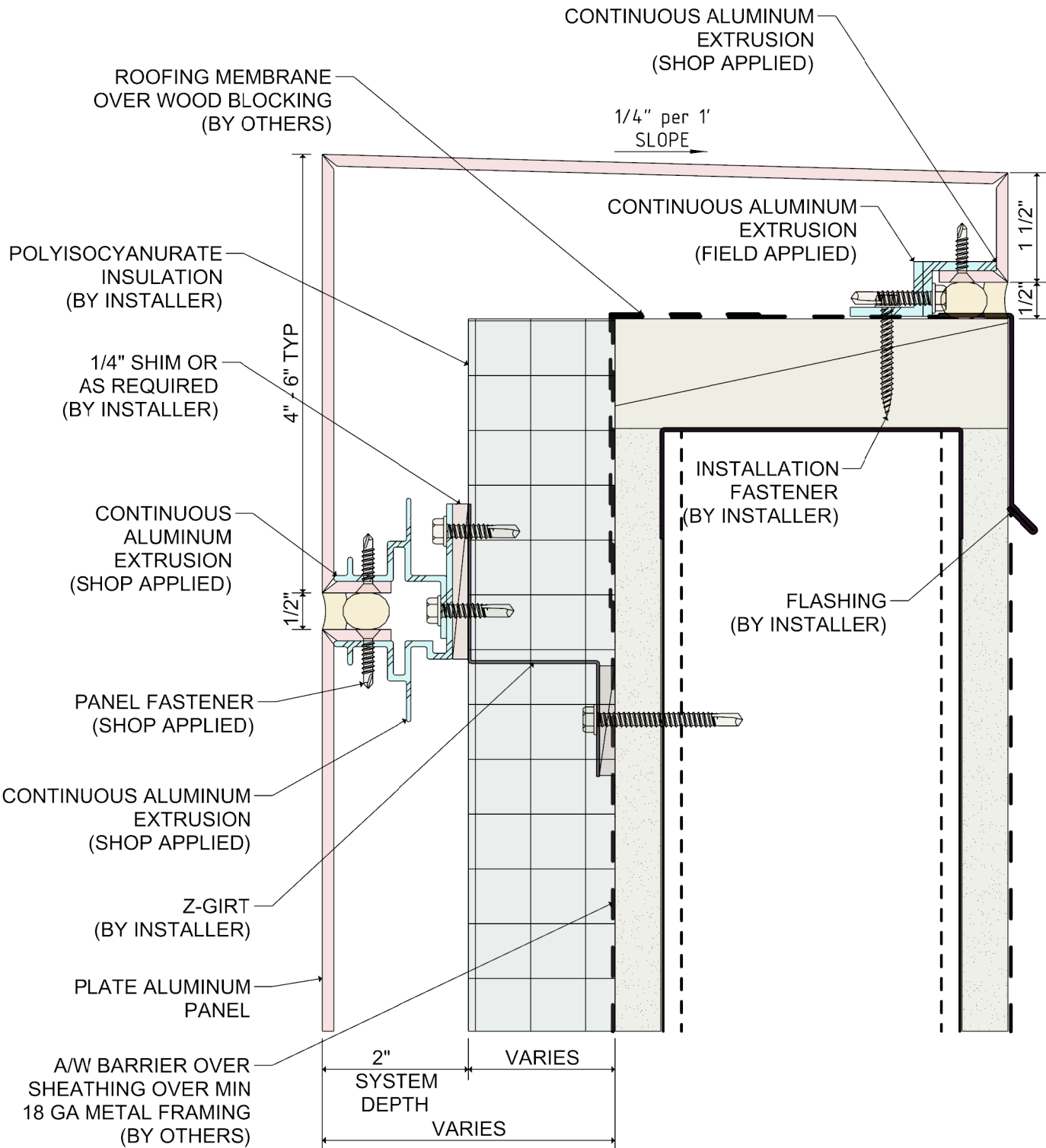


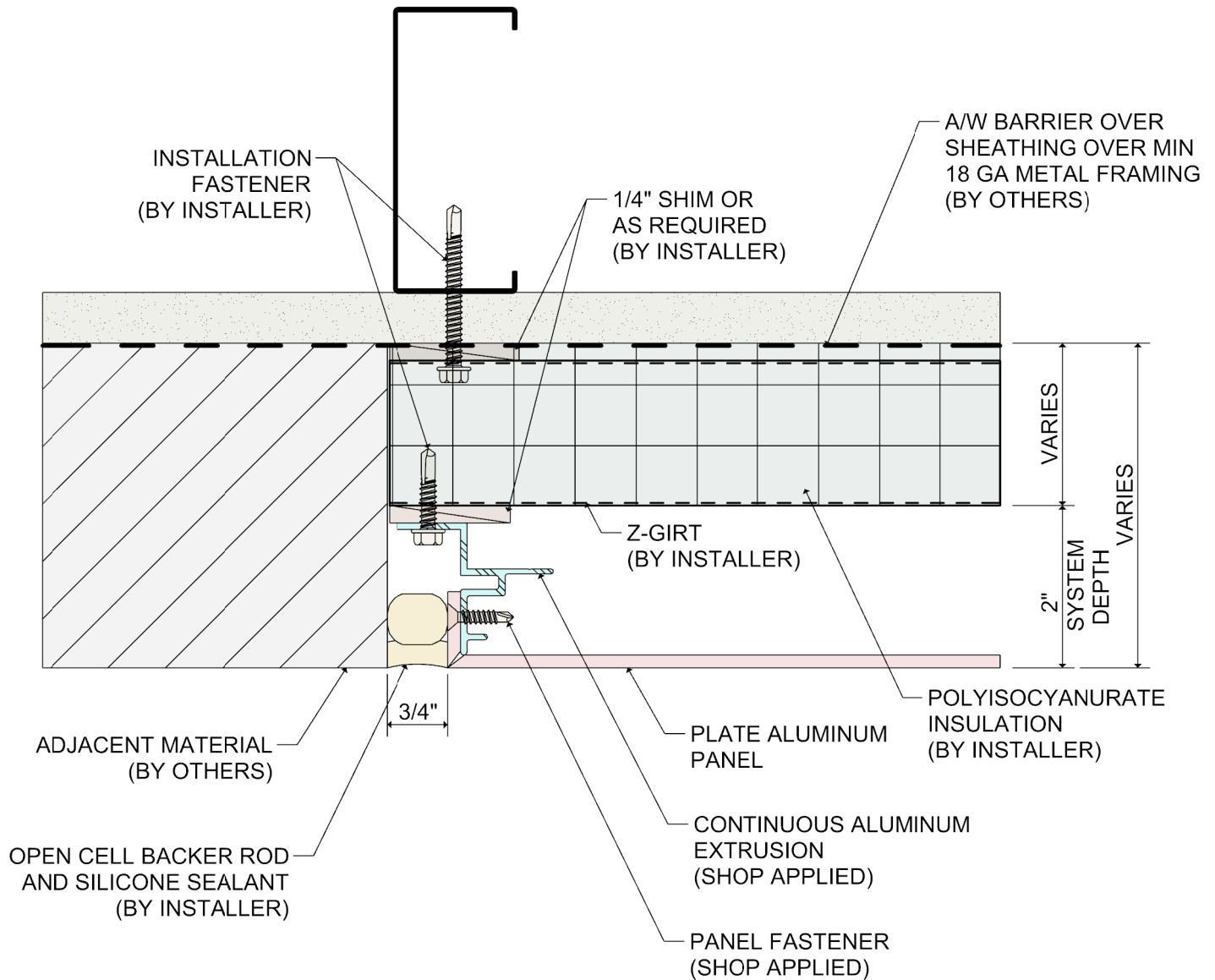


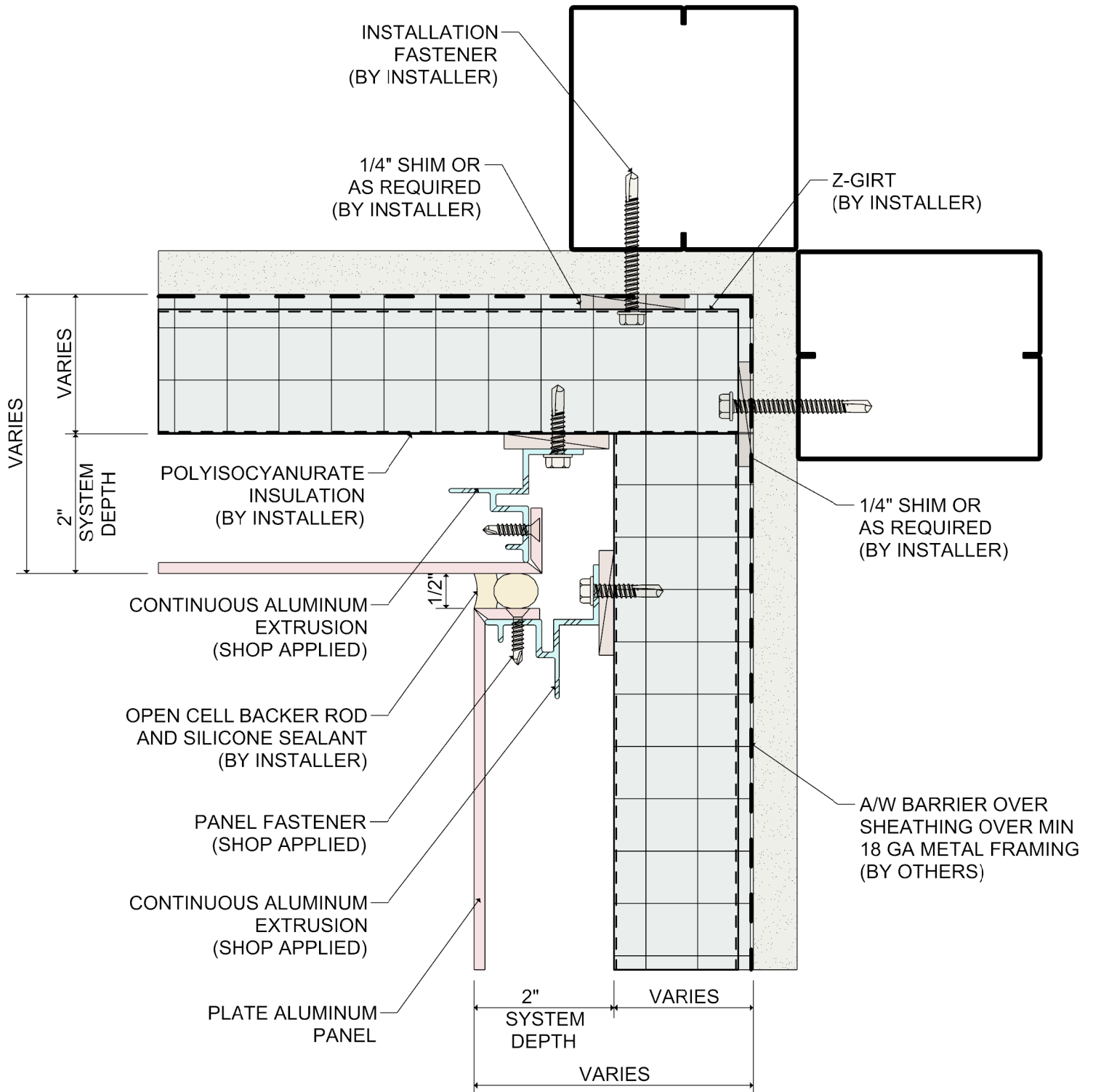


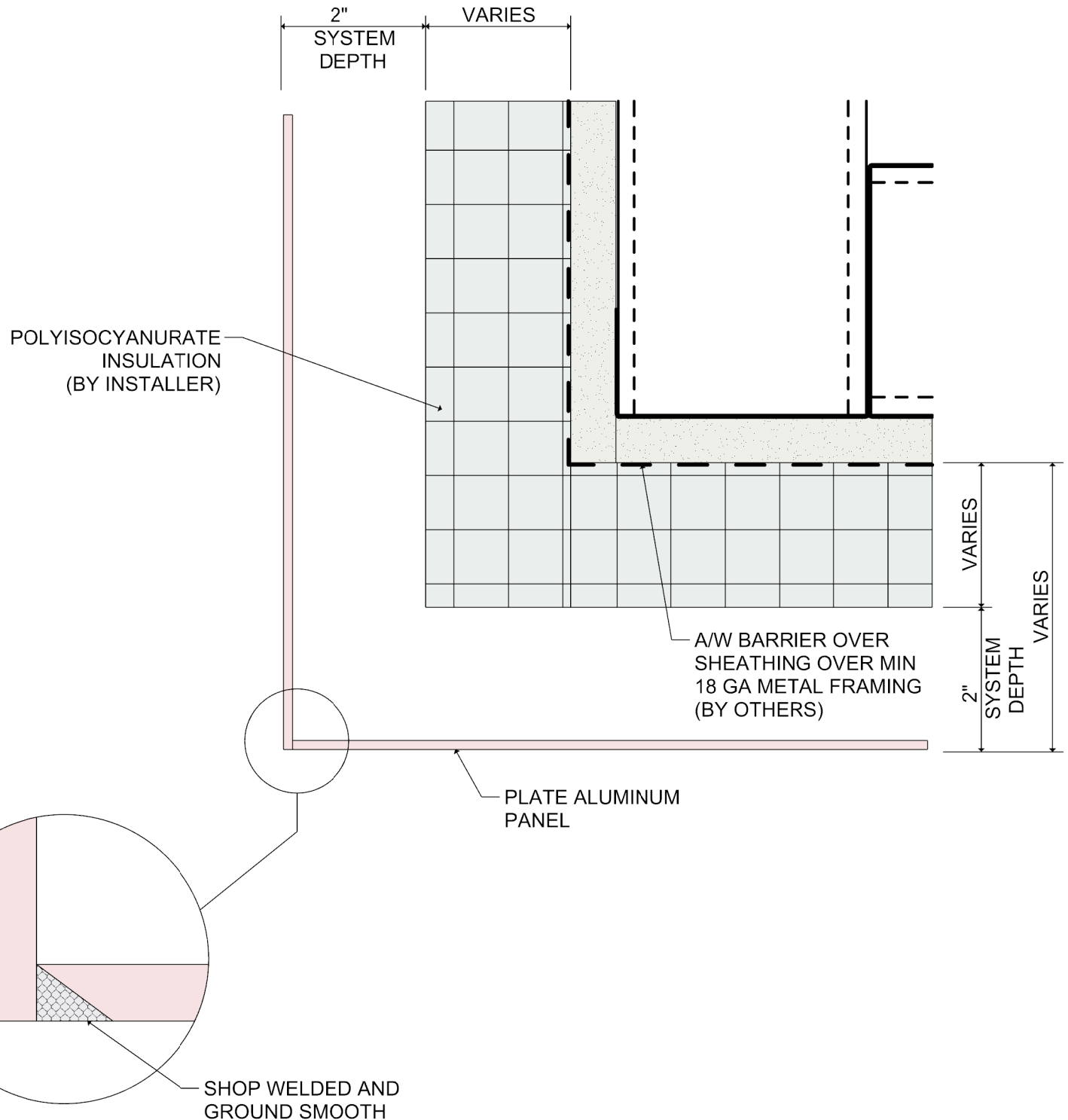


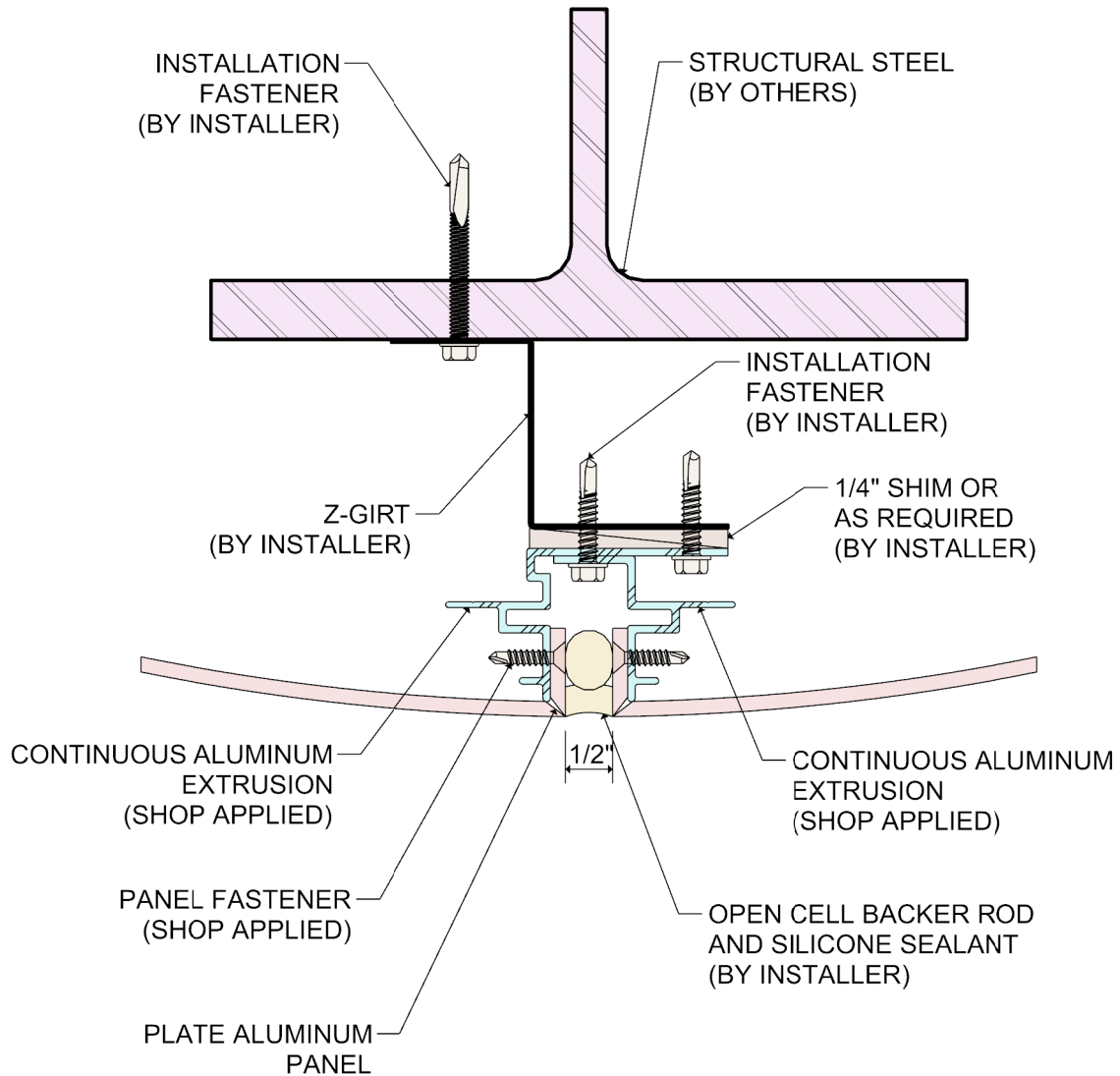


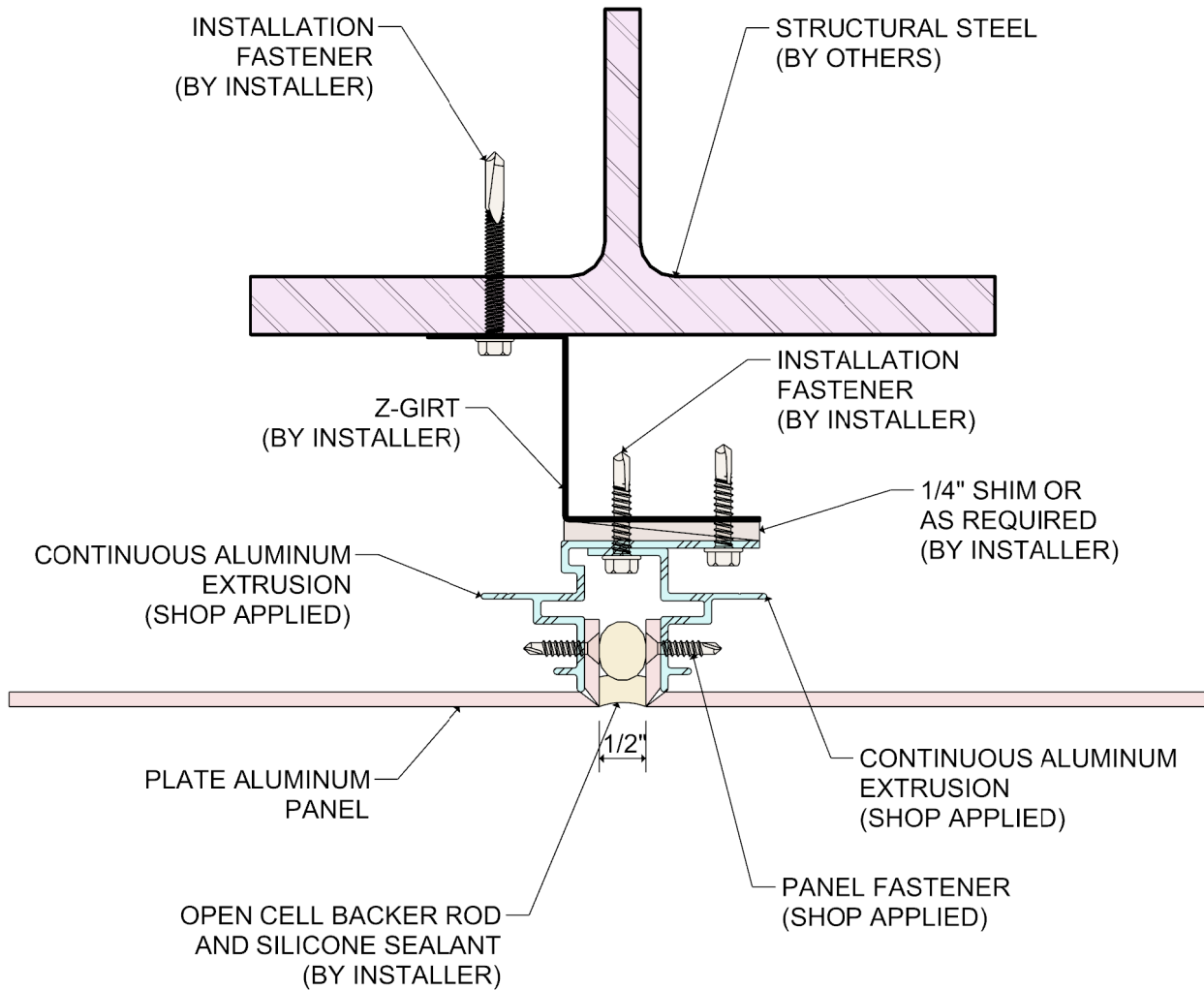


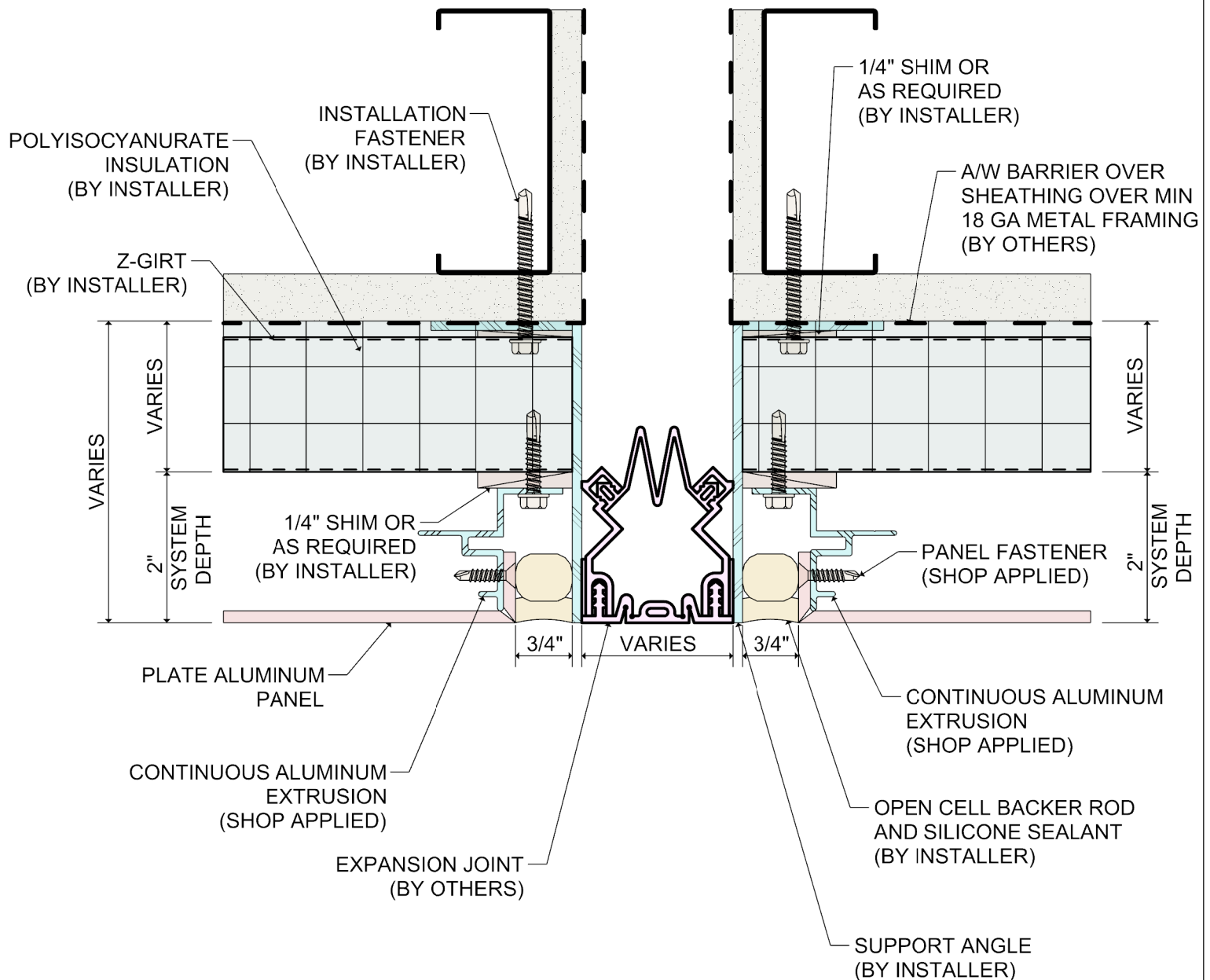


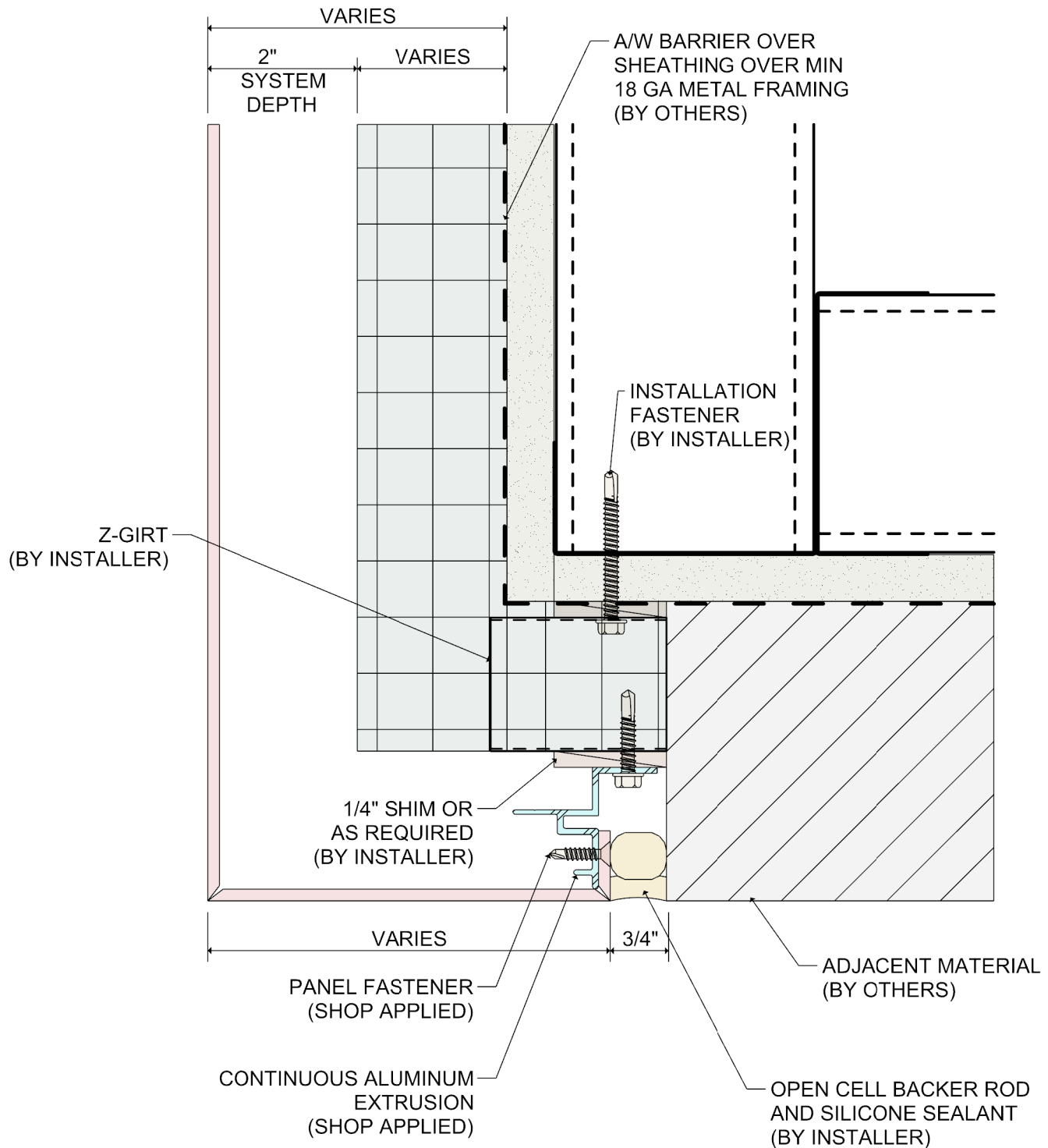


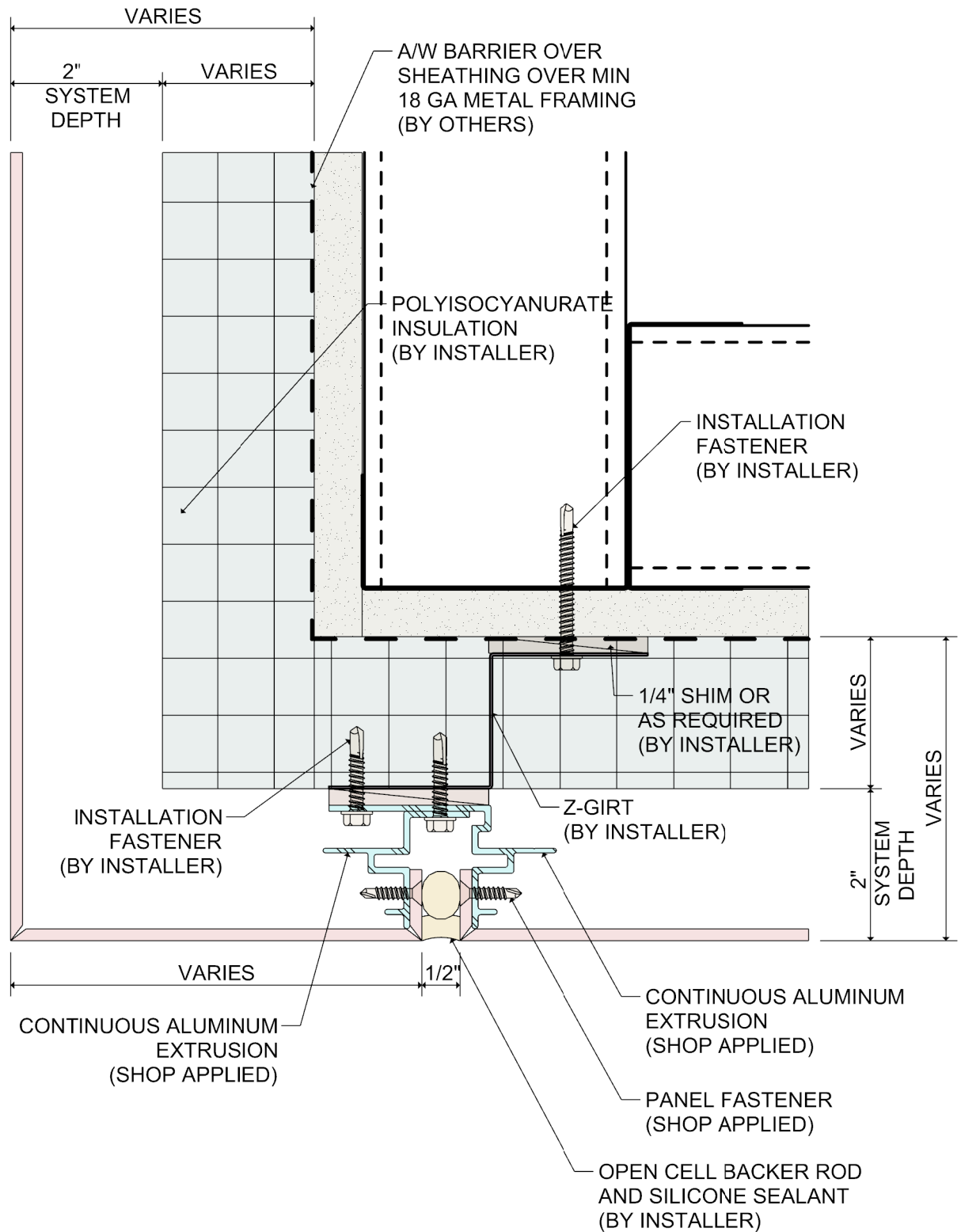










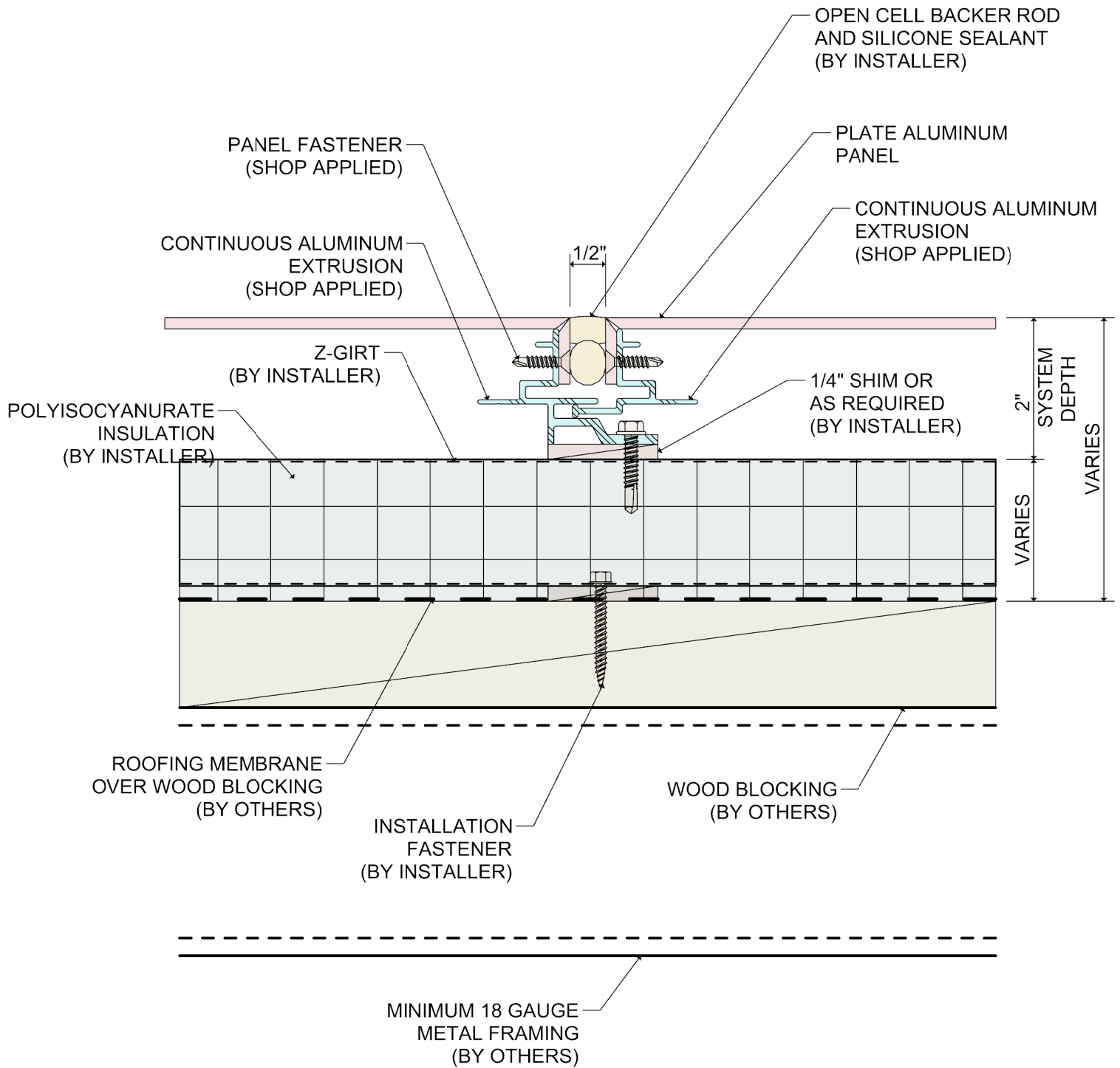


DETAIL:

15

SYSTEM 3100 WET SEAL SYSTEM

SOFFIT TRANSITION



DETAIL:

16

SYSTEM 3100

WET SEAL SYSTEM

SKYWARD FACING JOINT- THERMAL EXPANSION

