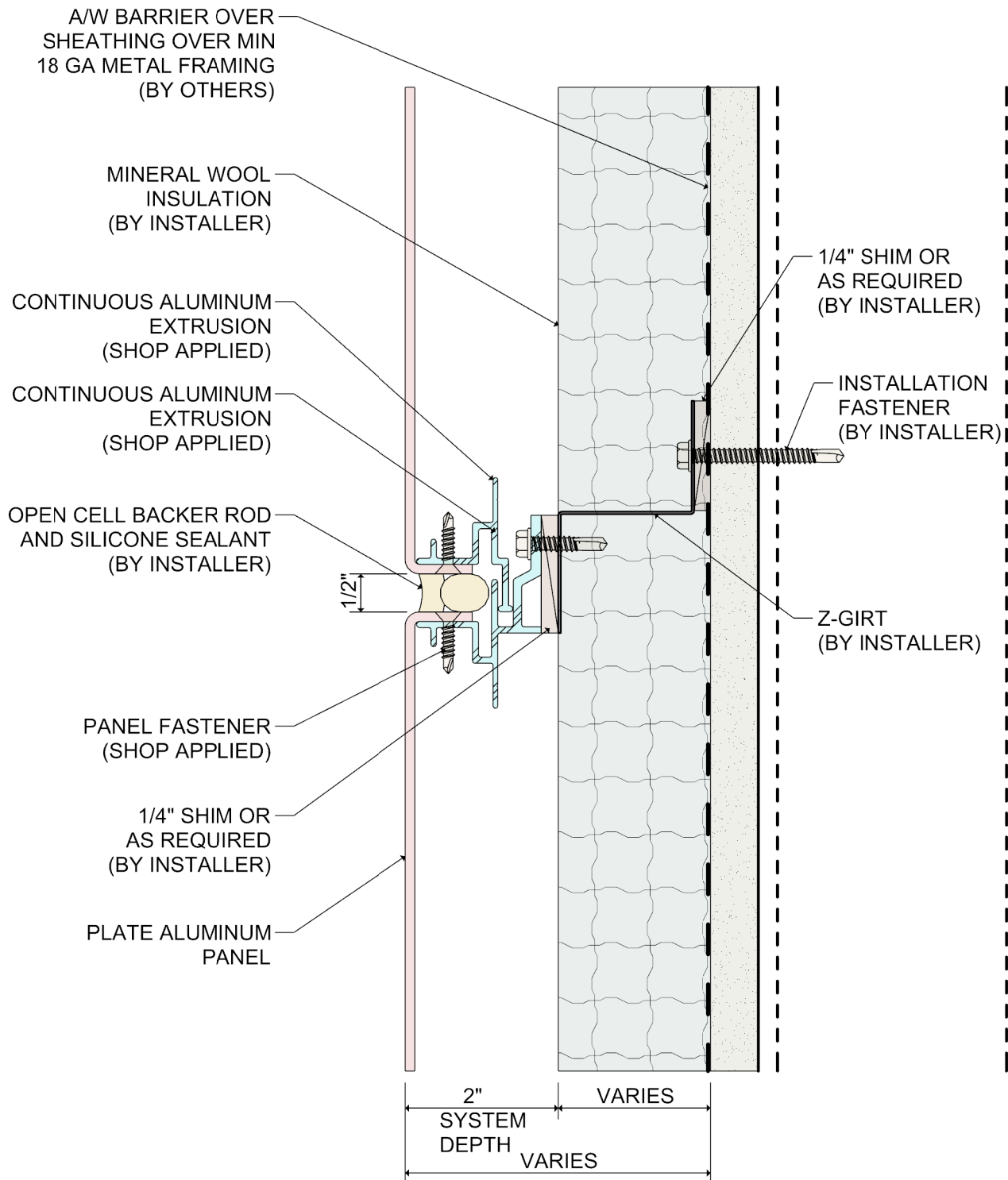
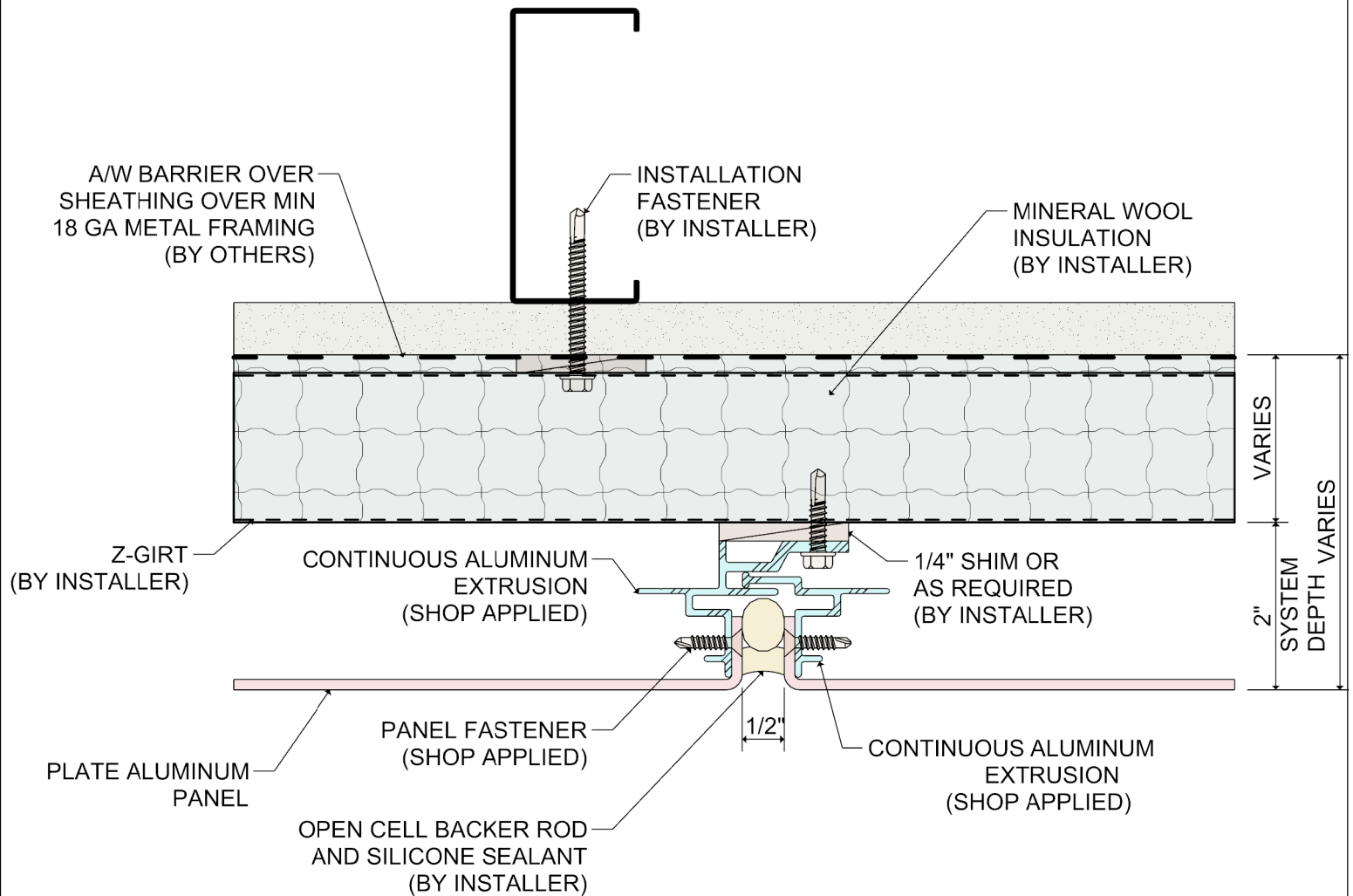
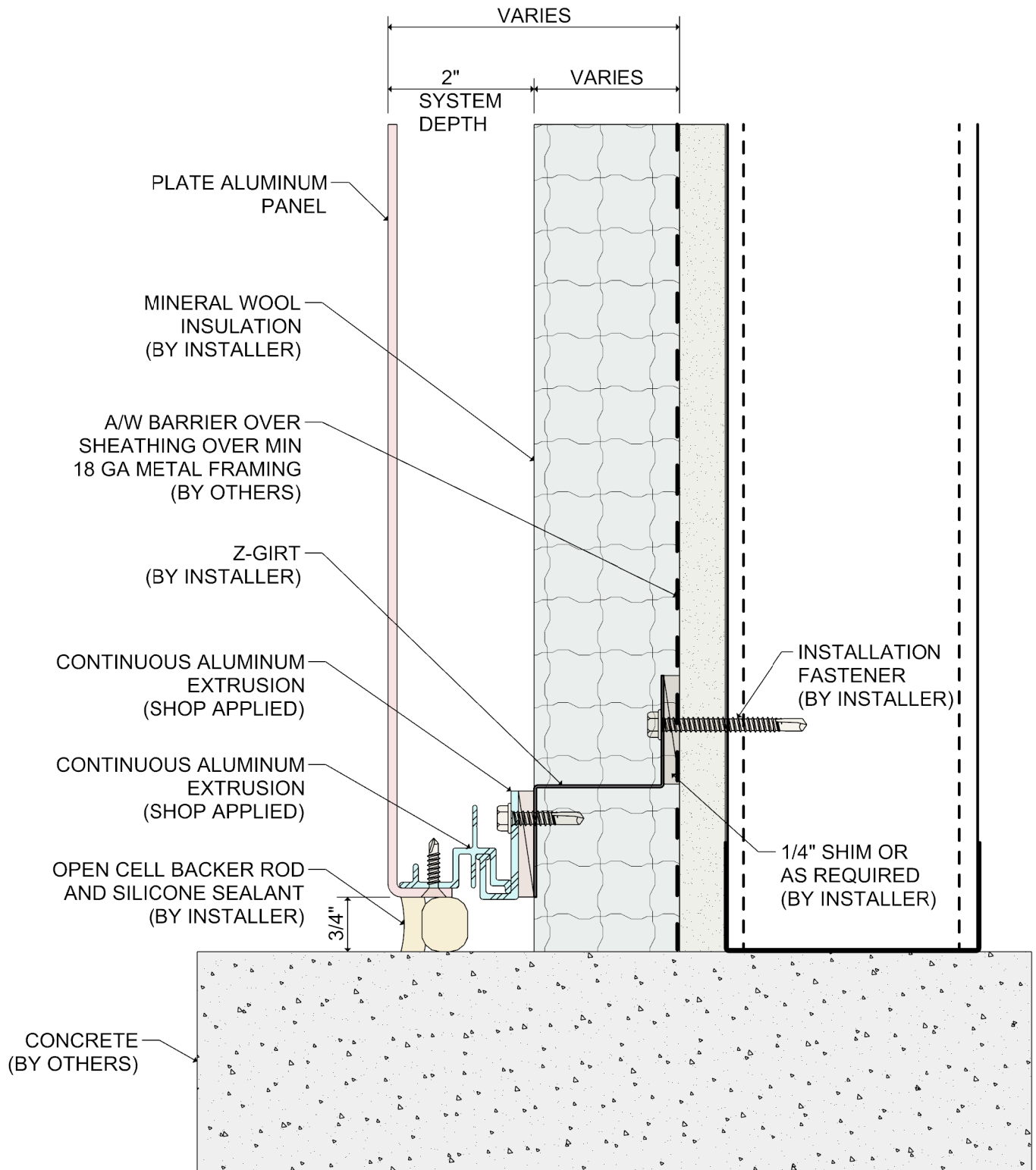


System 3150 Plate Aluminum Wet Seal Attachment System Details with Mineral Wool Insulation

Revised 11/2020







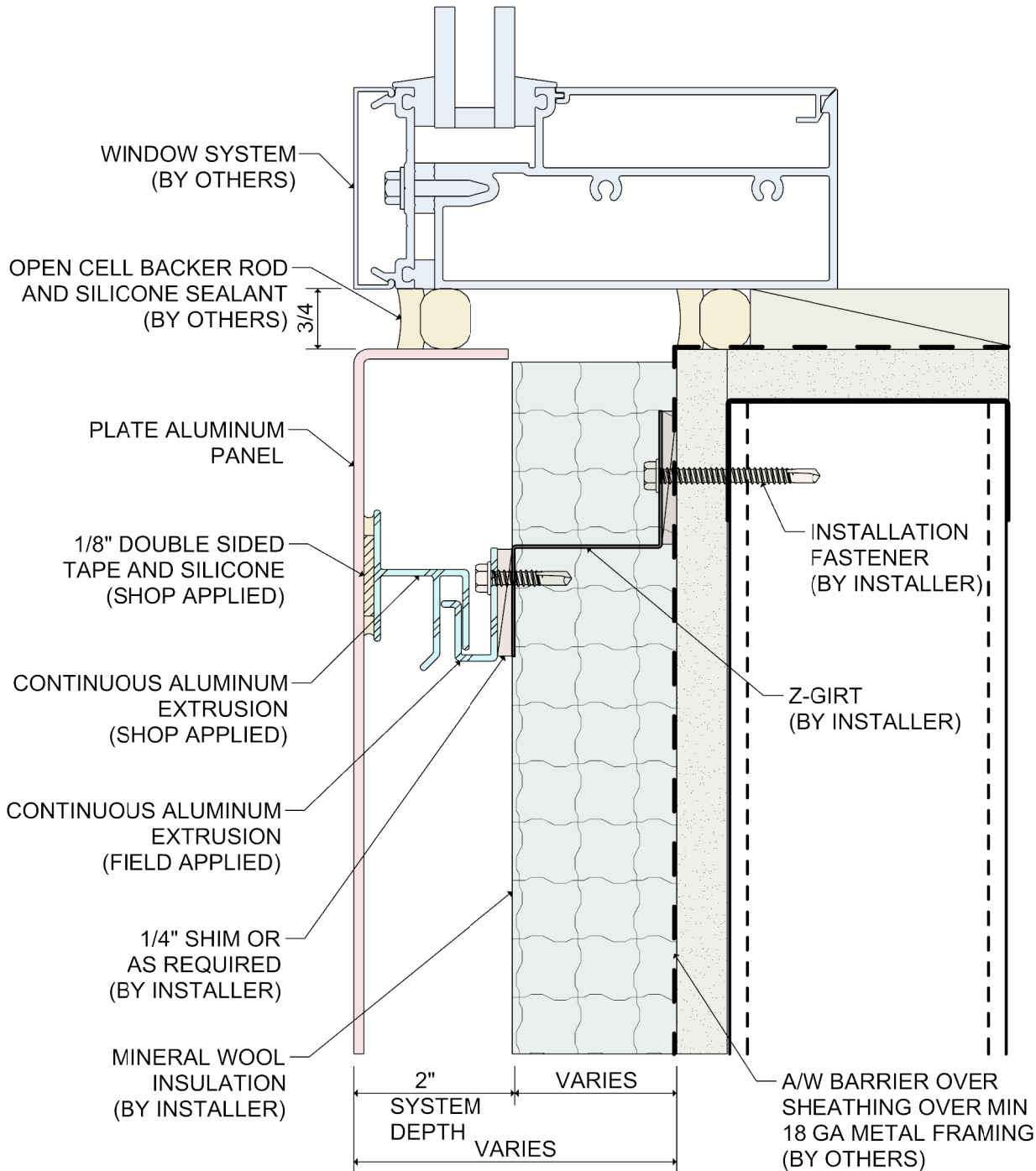
DETAIL:

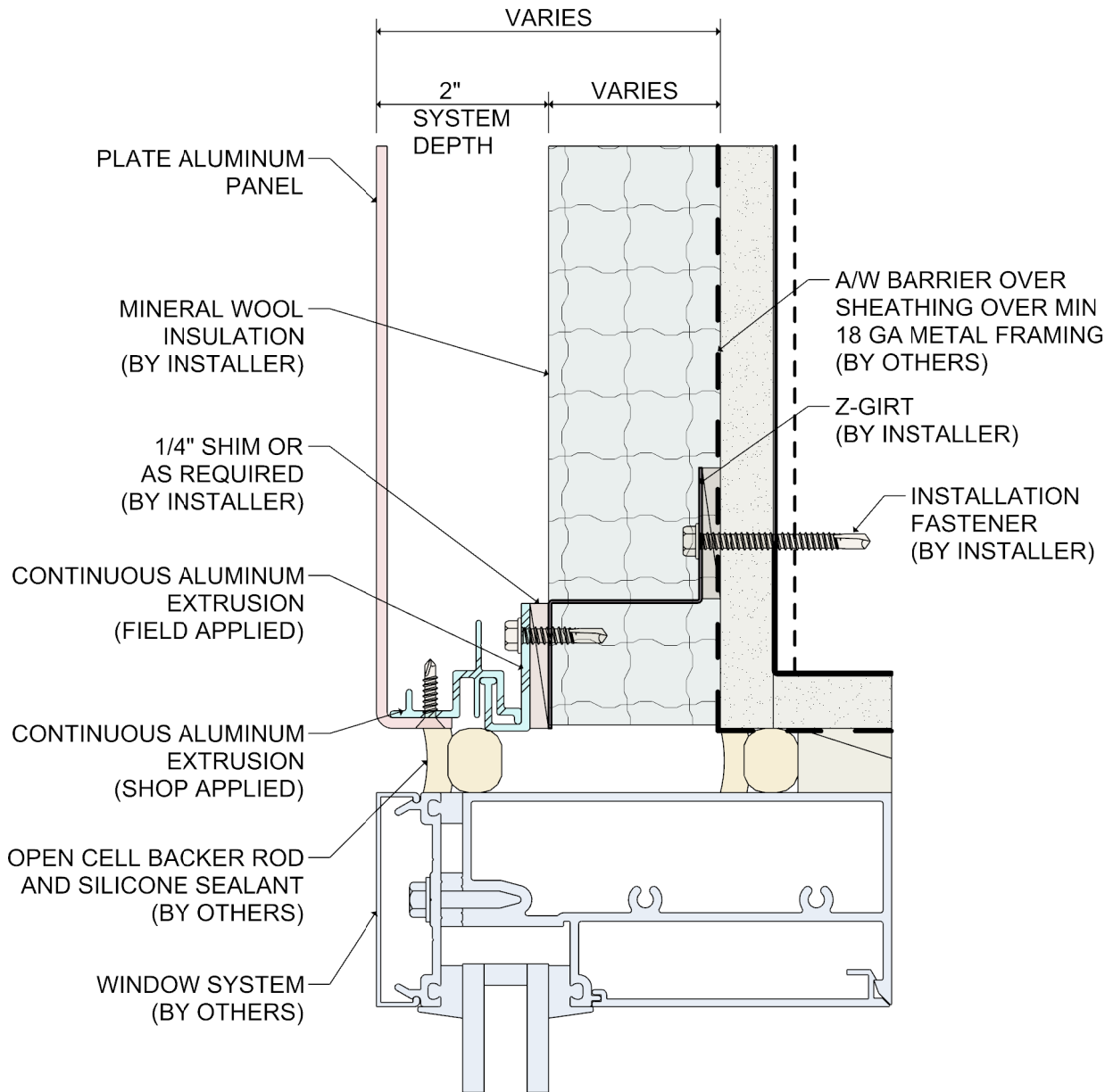
3

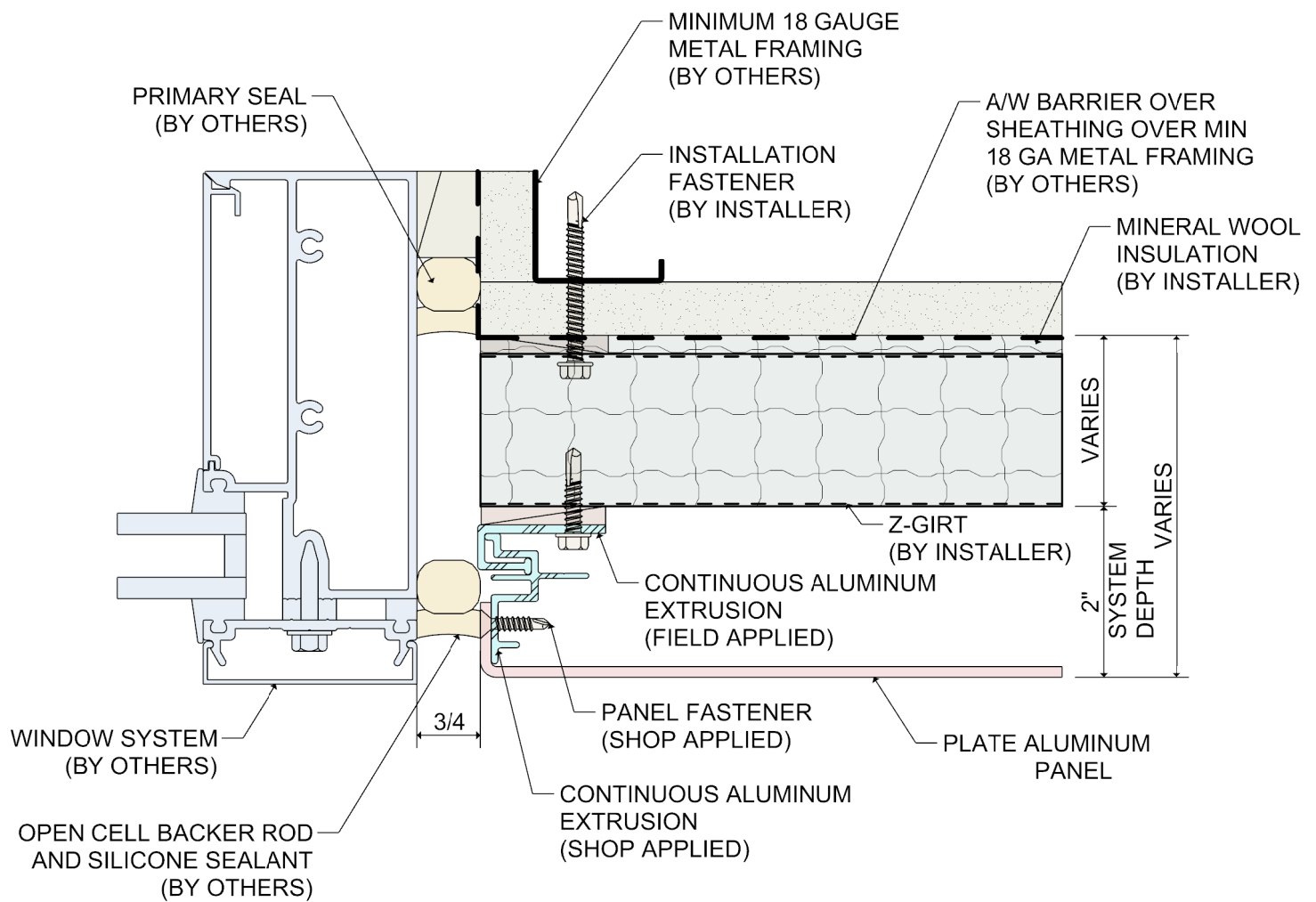
SYSTEM 3150

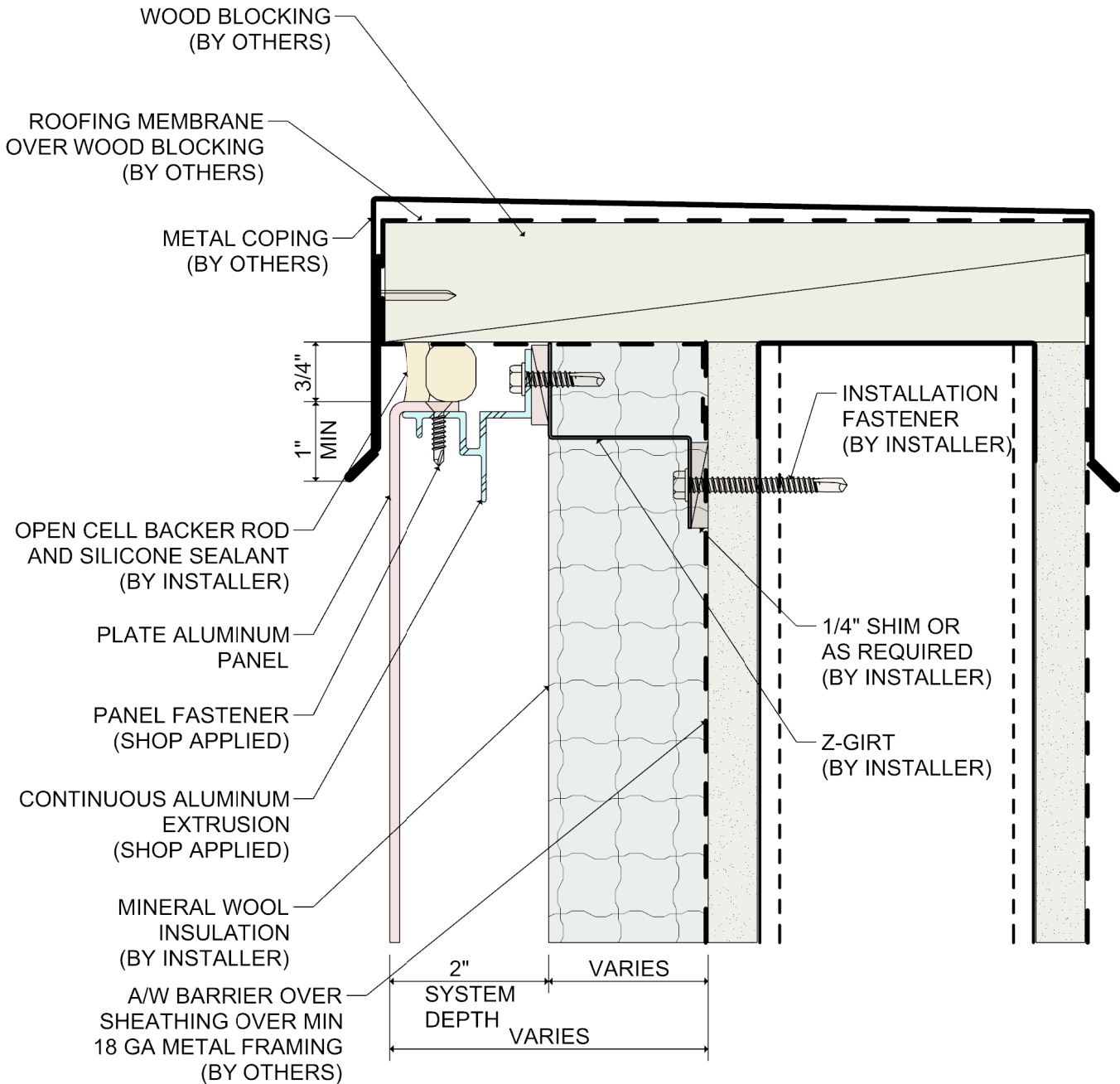
WET SEAL SYSTEM

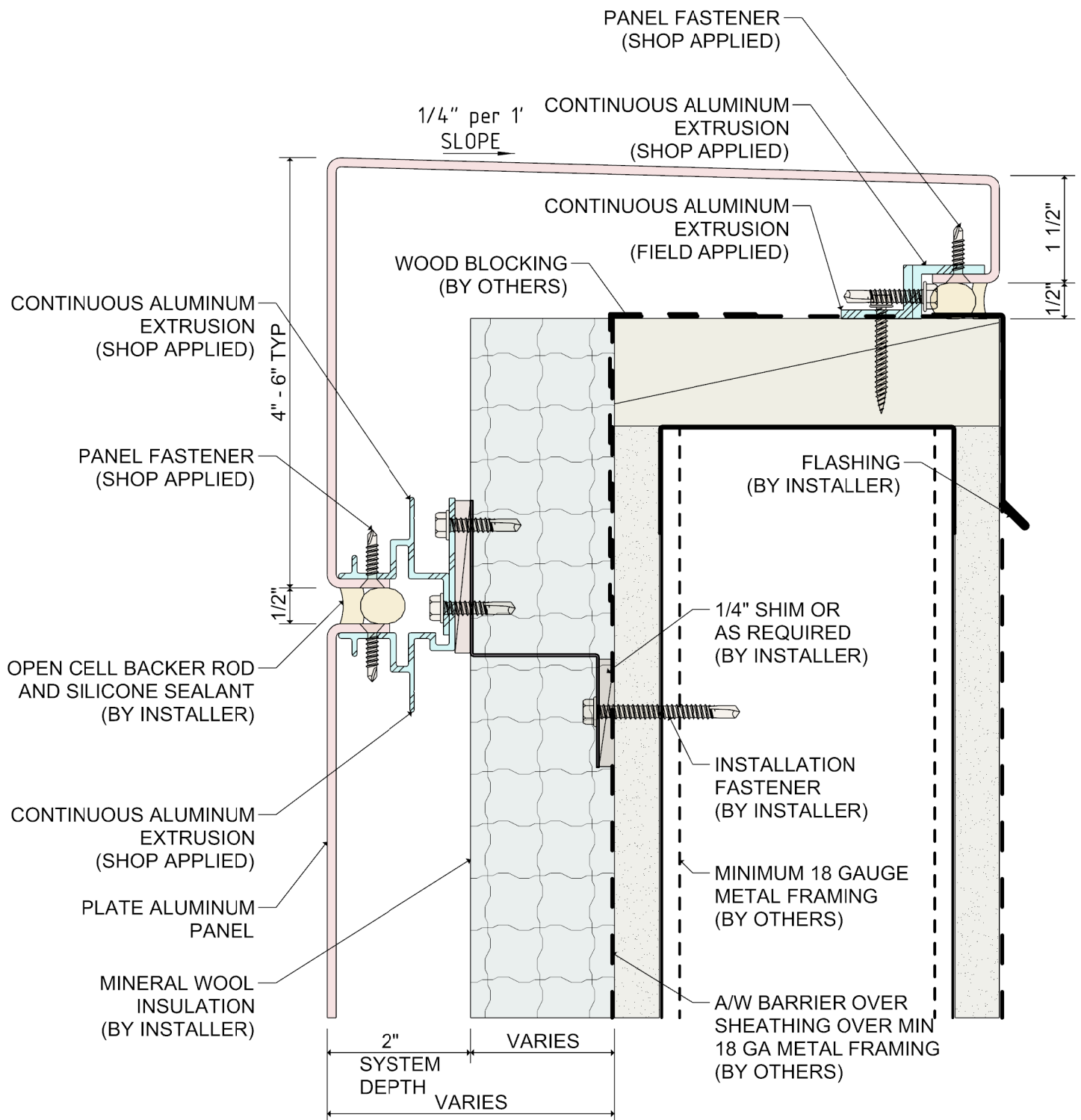
BASE DETAIL

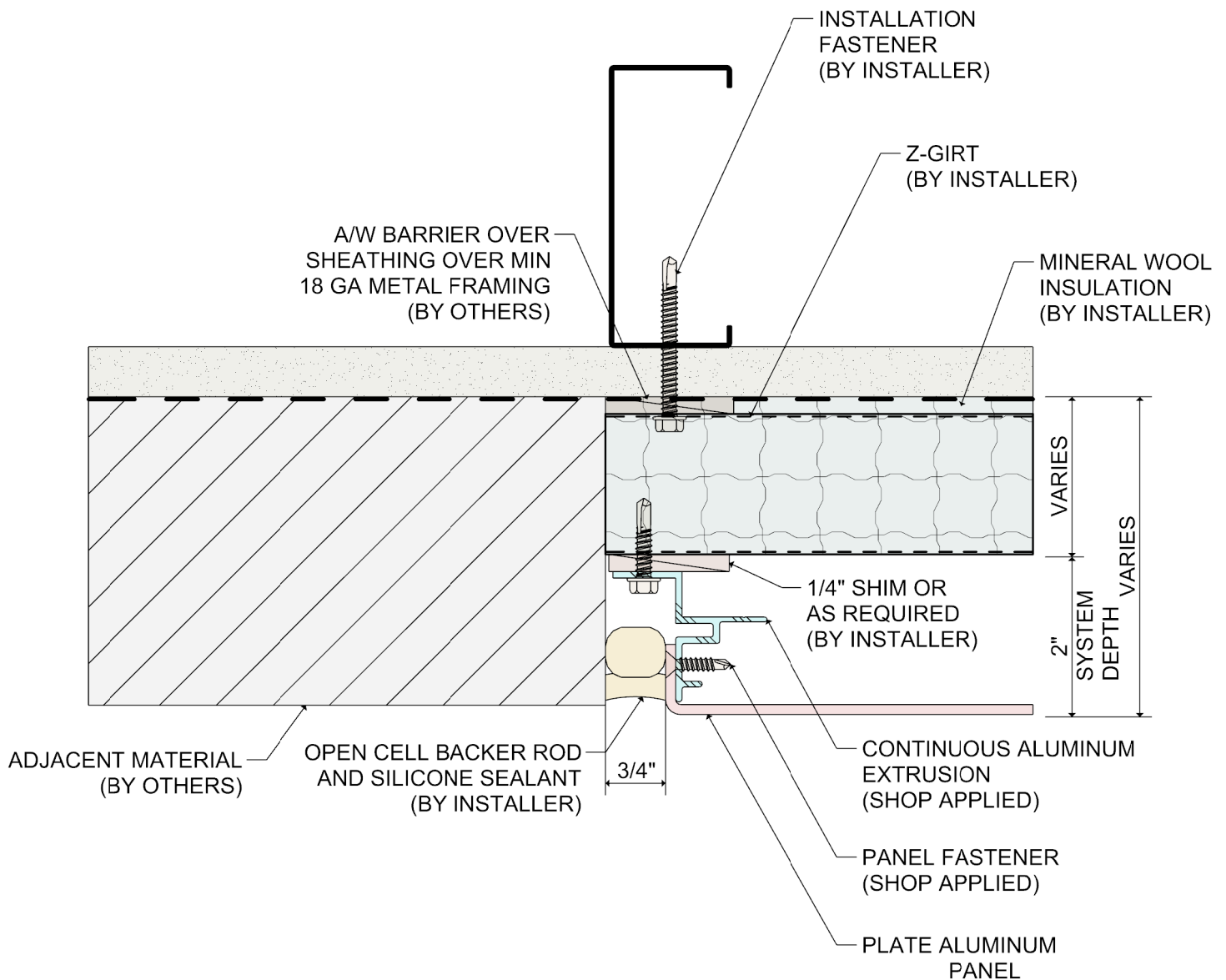


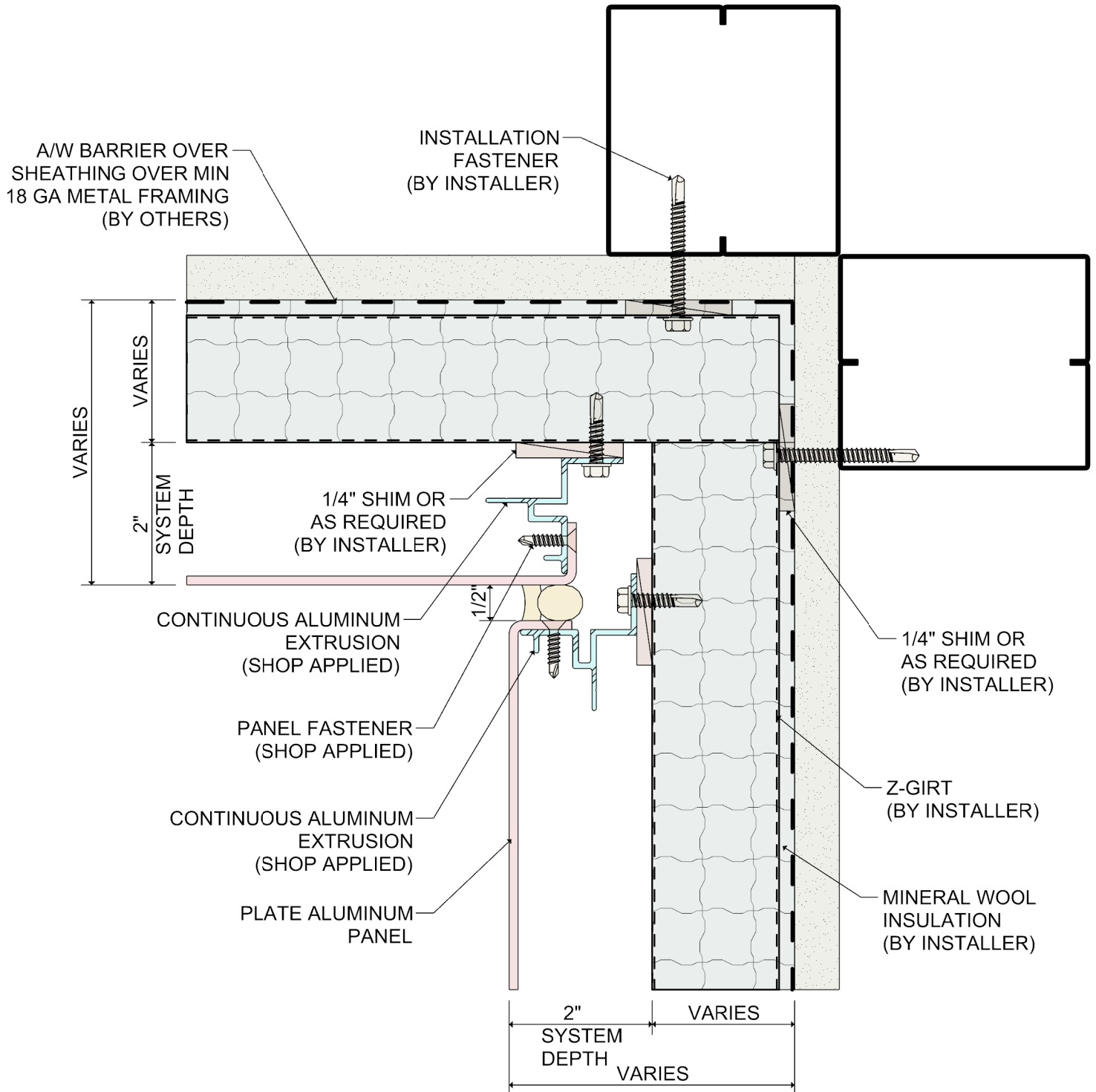


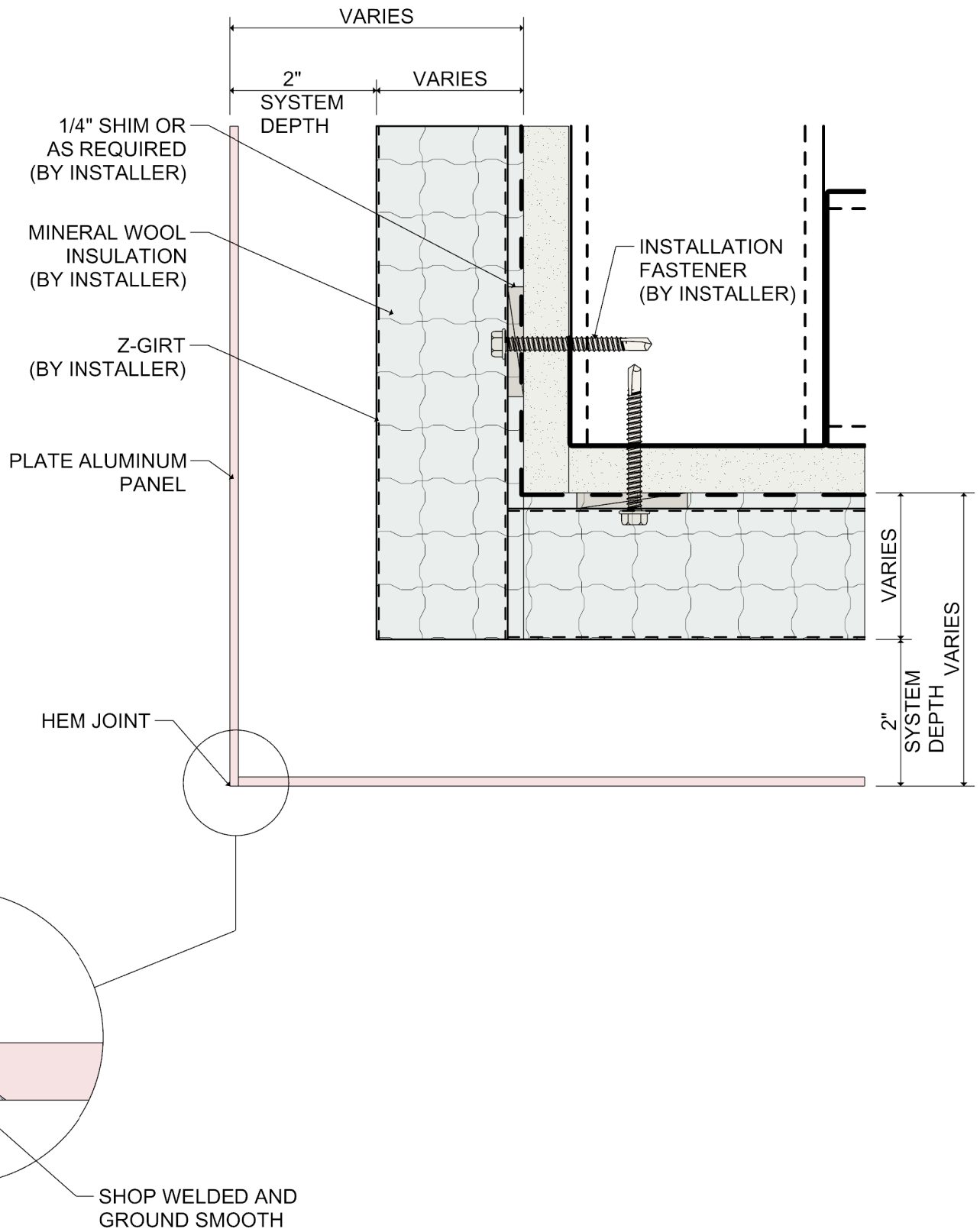












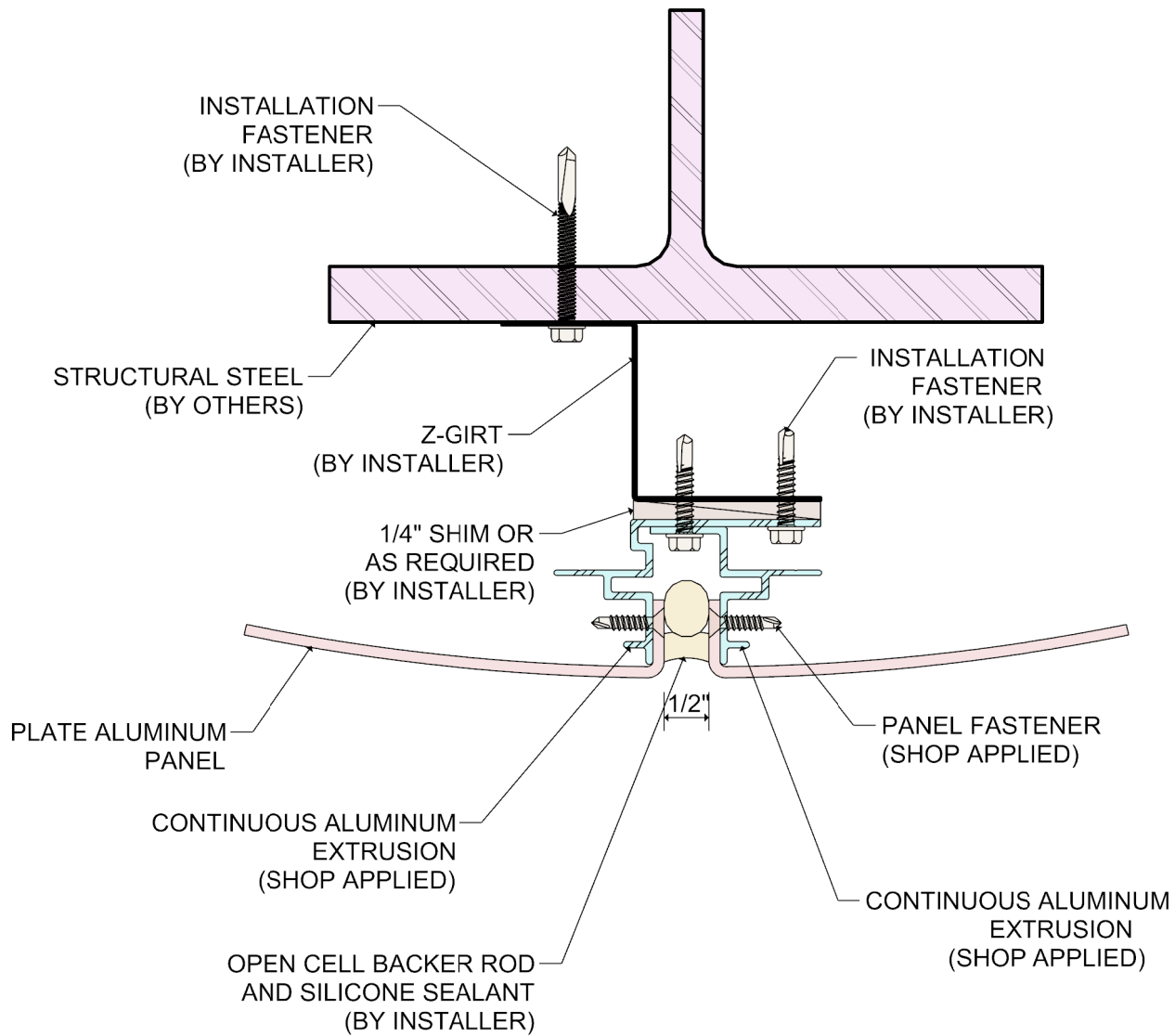
DETAIL:

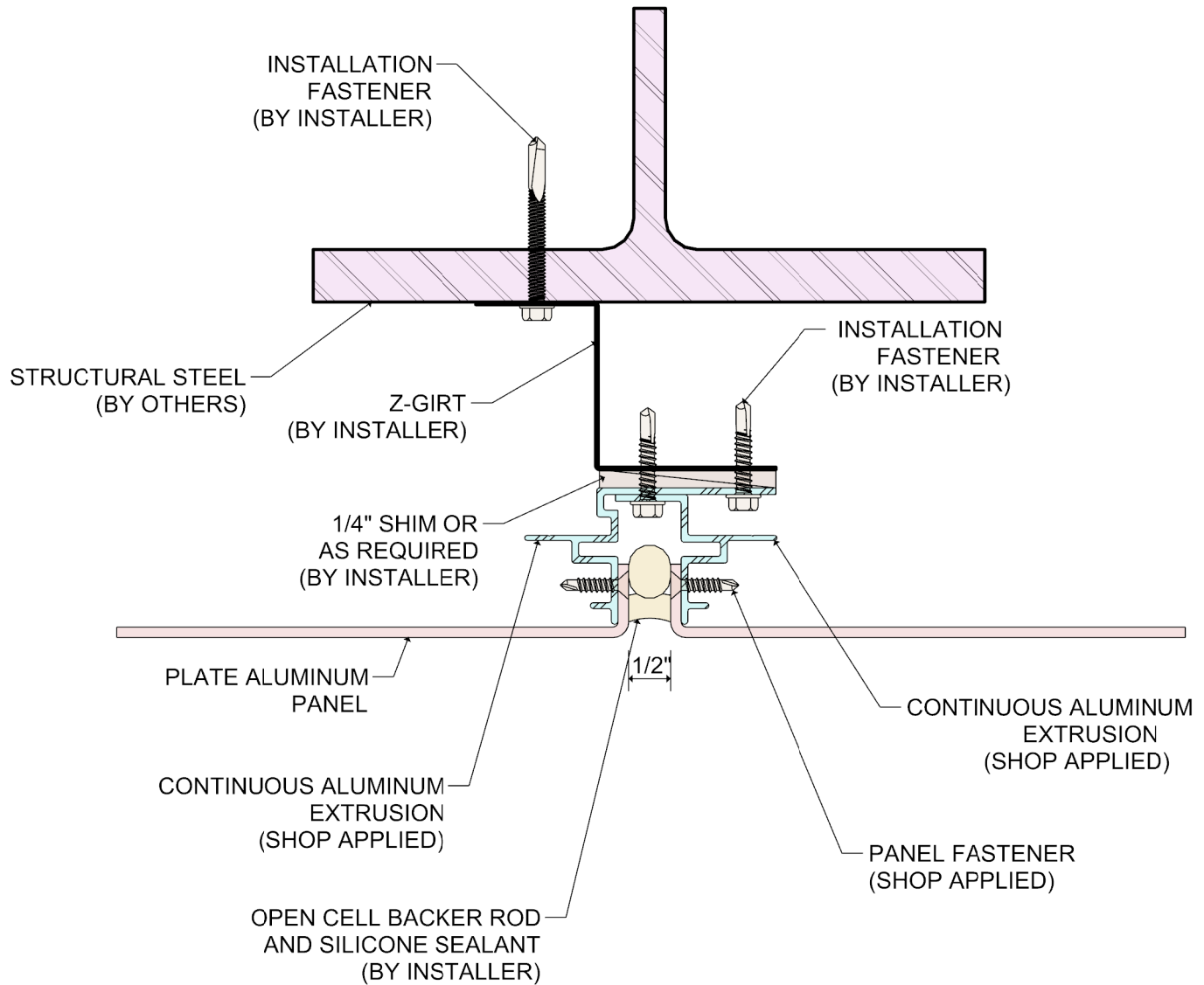
11

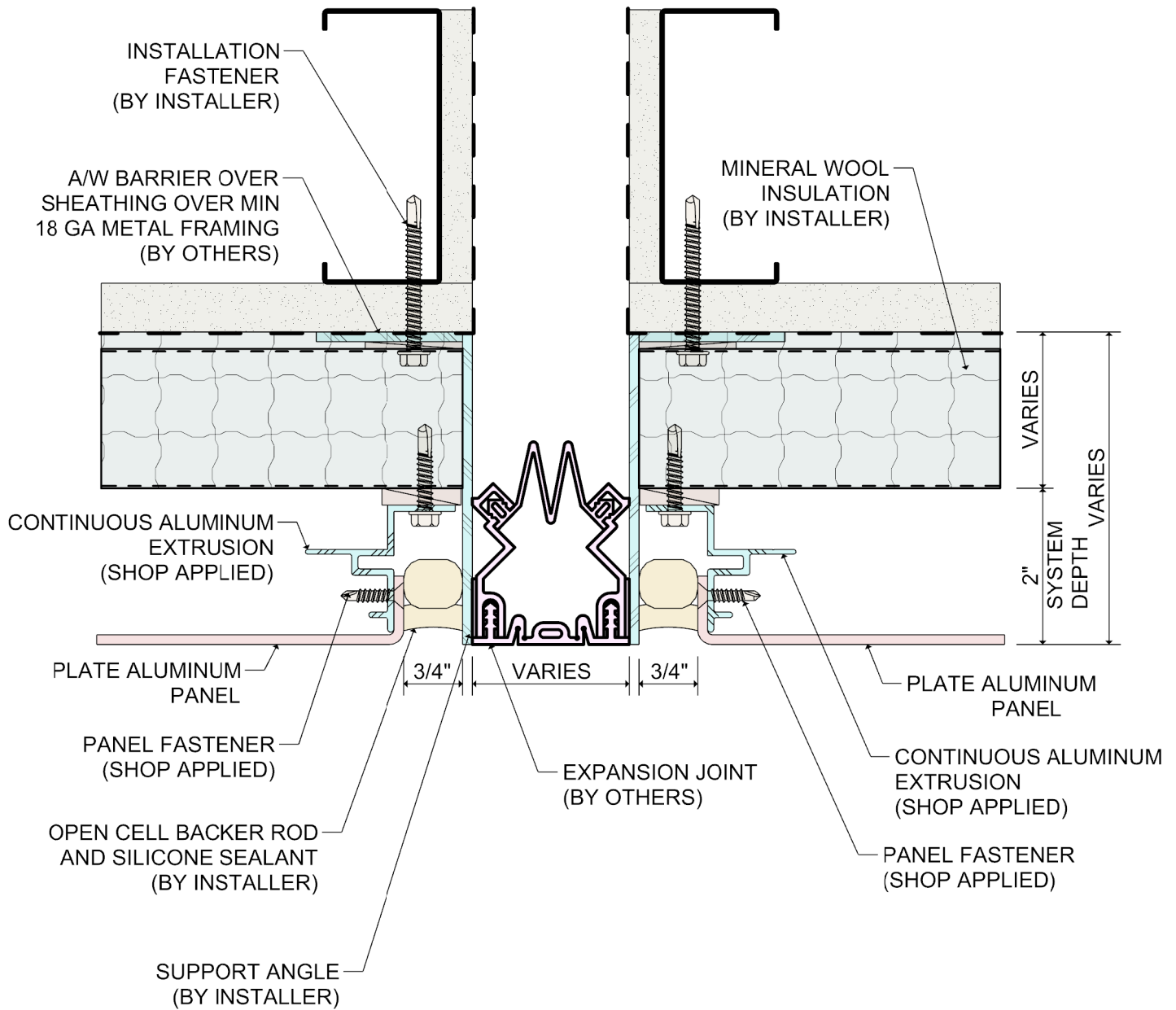
SYSTEM 3150

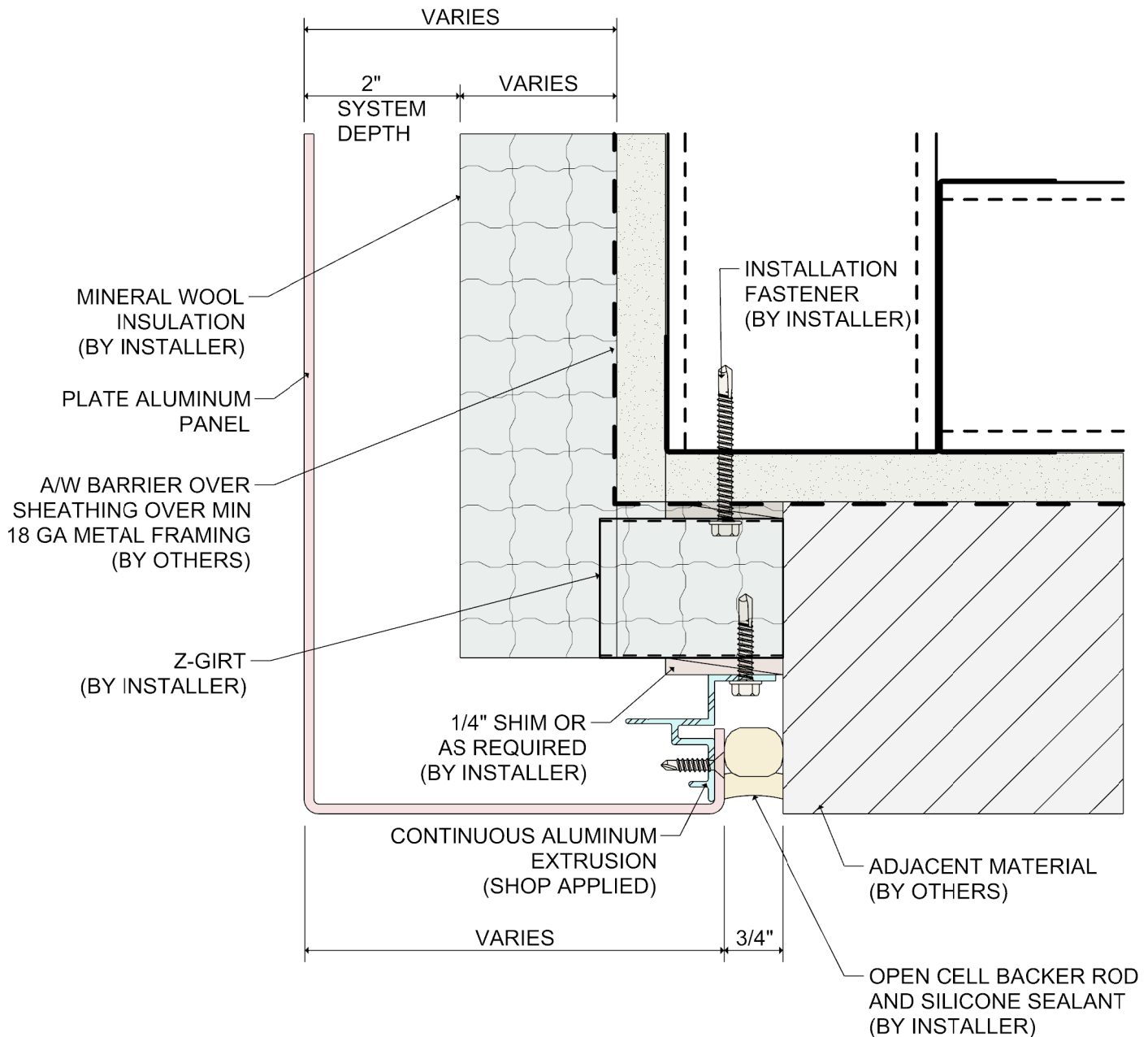
WET SEAL SYSTEM

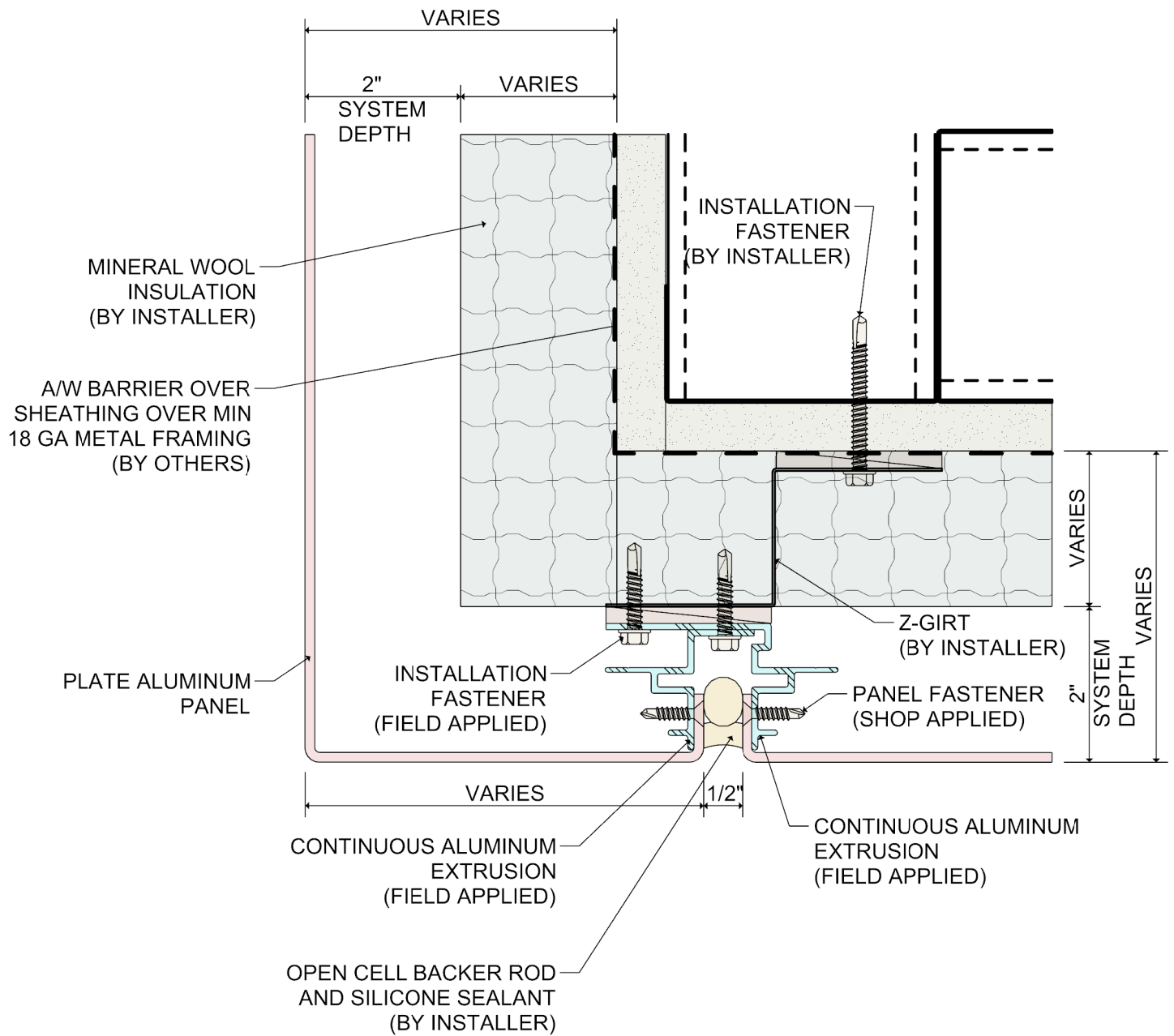
HEM JOINT DETAIL

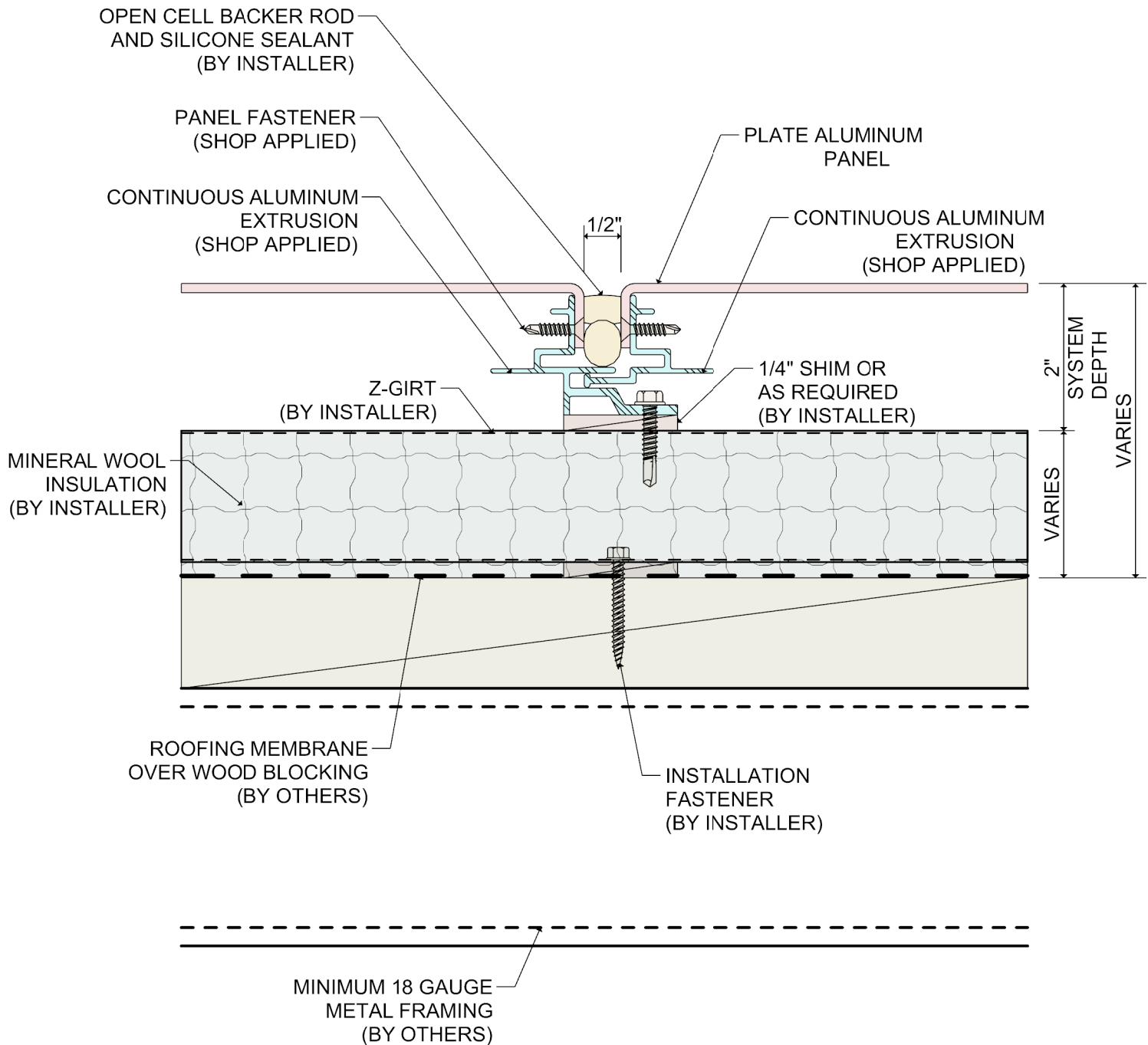


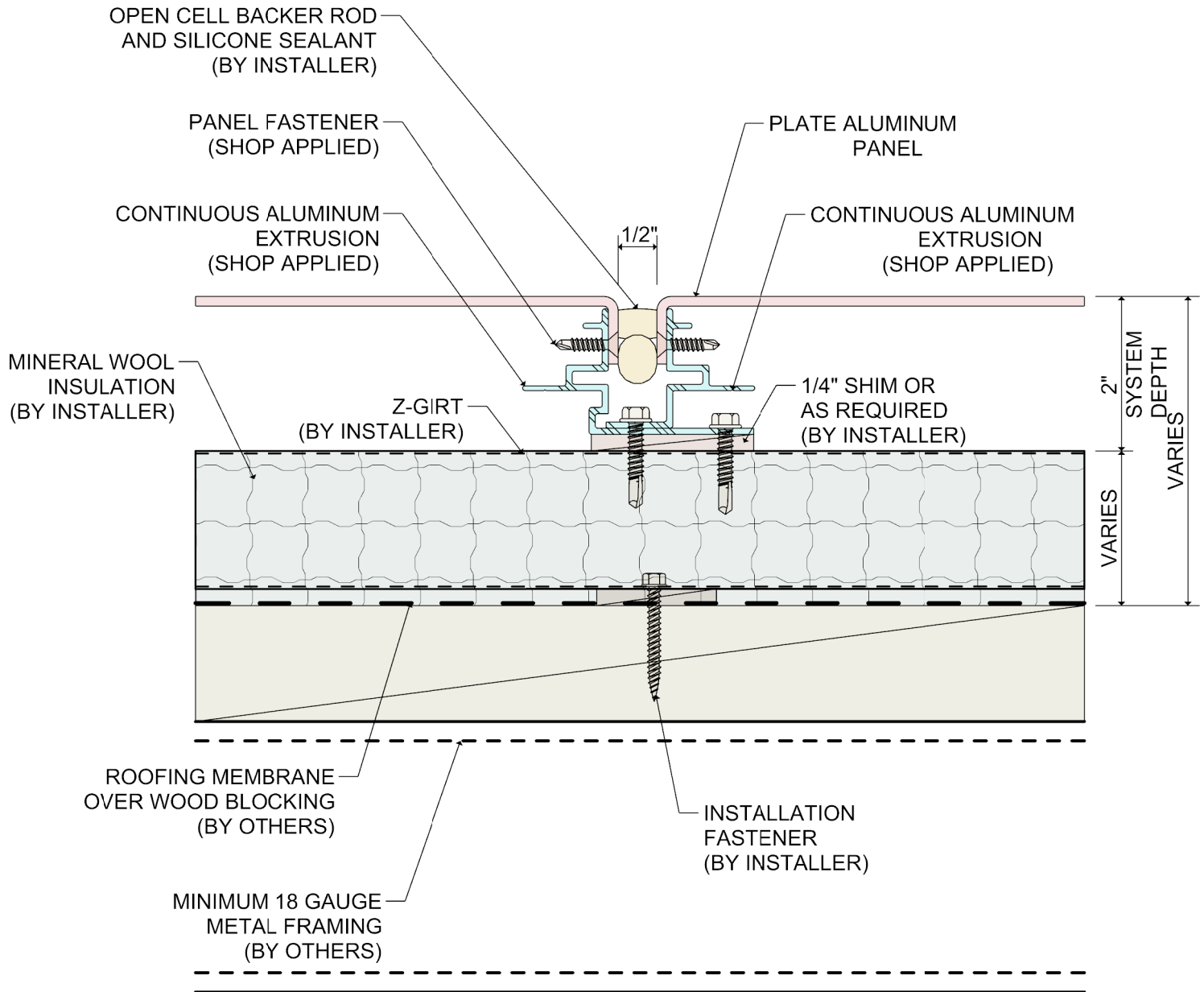












DETAIL:

16A

SYSTEM 3150

WET SEAL SYSTEM

SKYWARD FACING JOINT- HARD FASTENED

