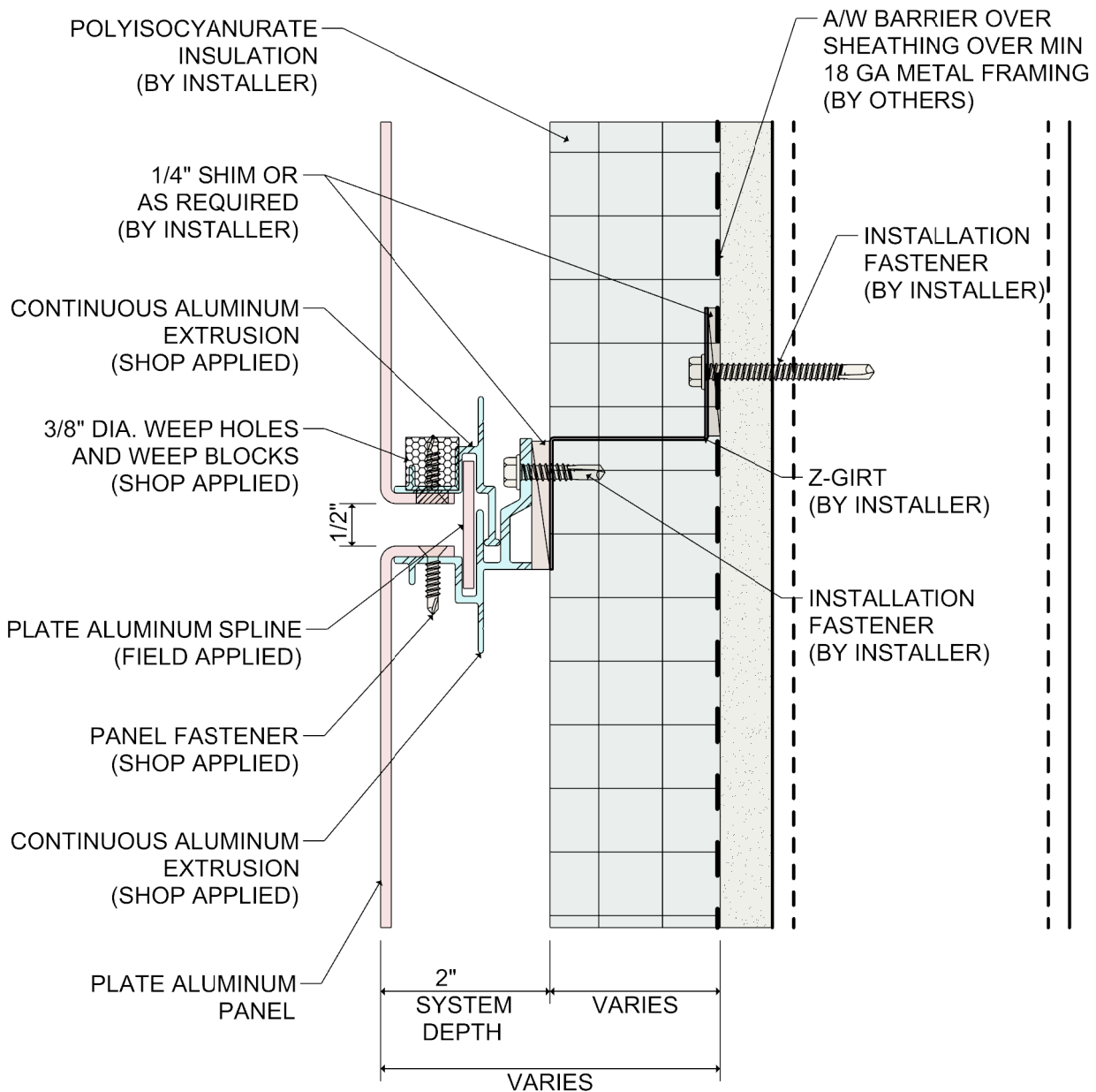
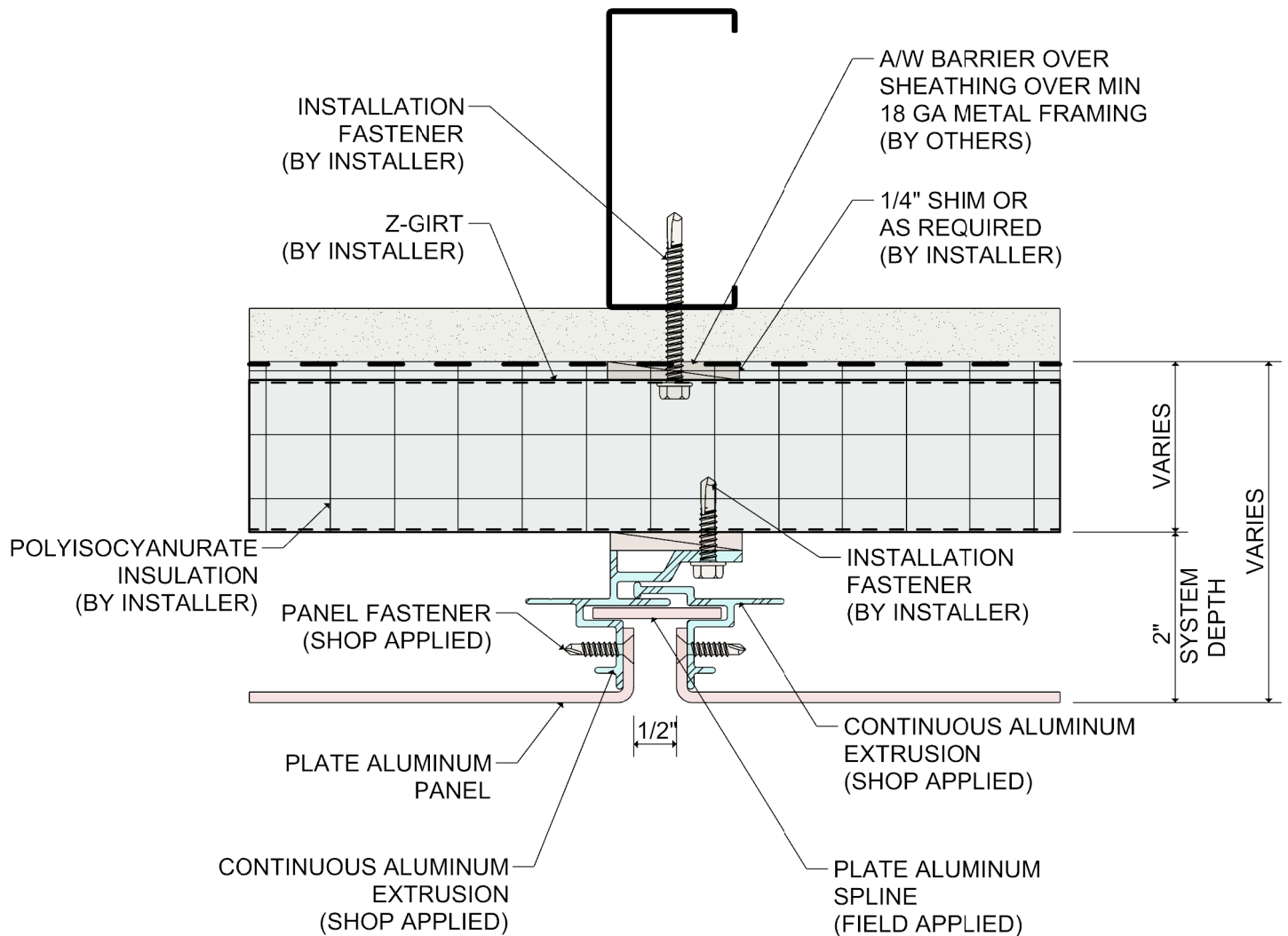




## System 3550 Rainscreen Attachment System Details with Polyisocyanurate Insulation

Revised 11/2020





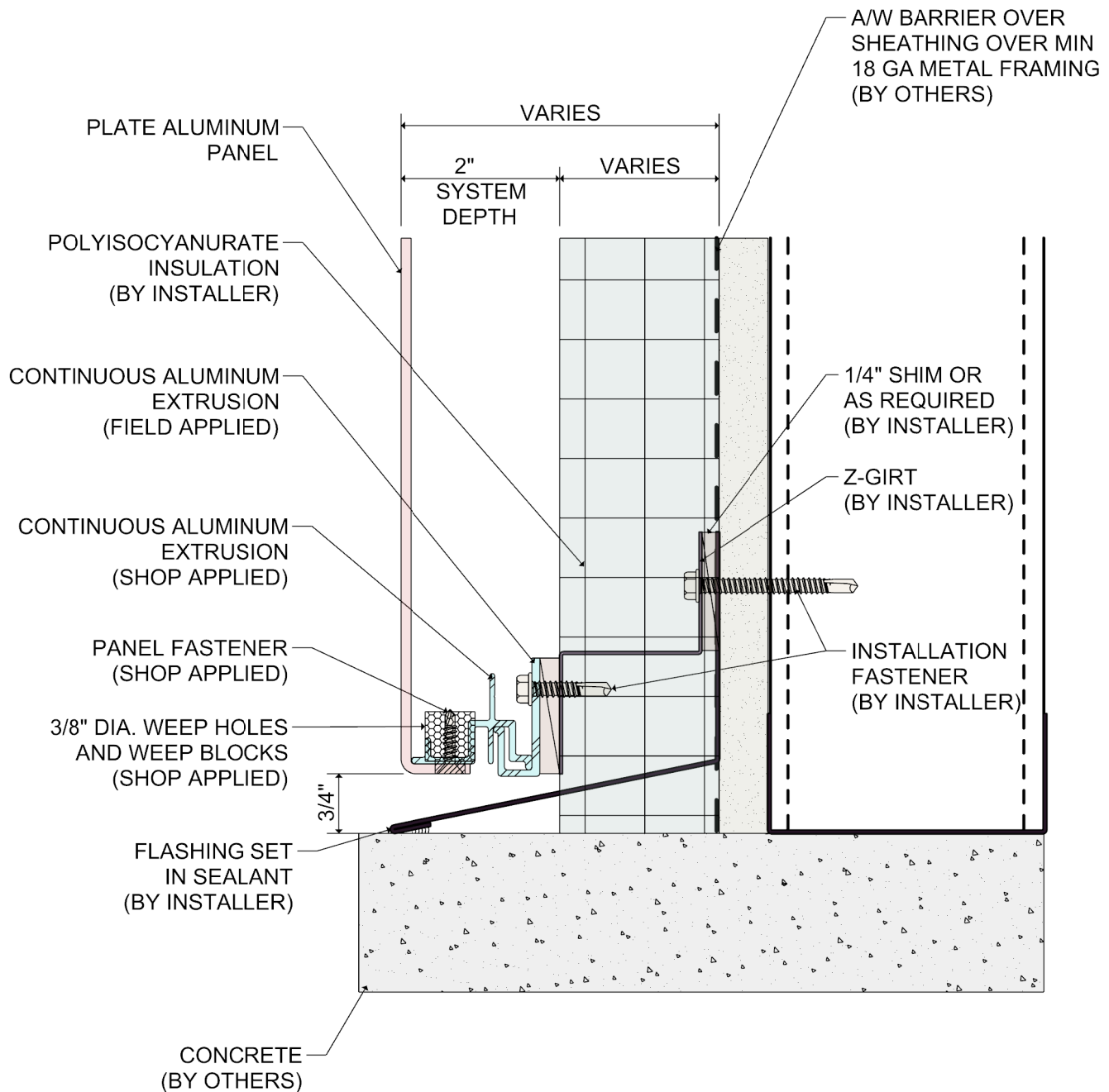
DETAIL:

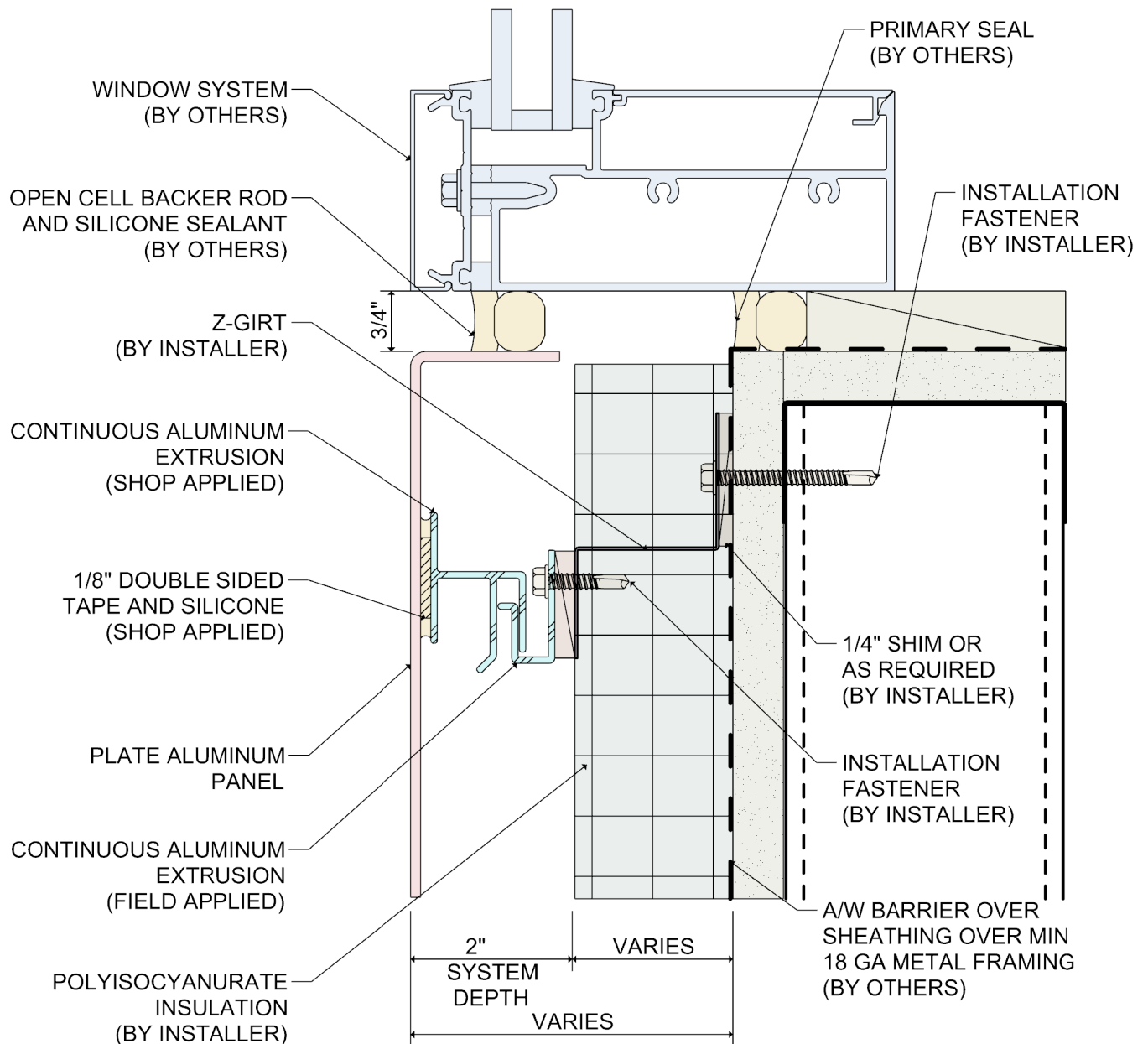
2

SYSTEM 3550

RAINSCREEN SYSTEM

VERTICAL JOINT



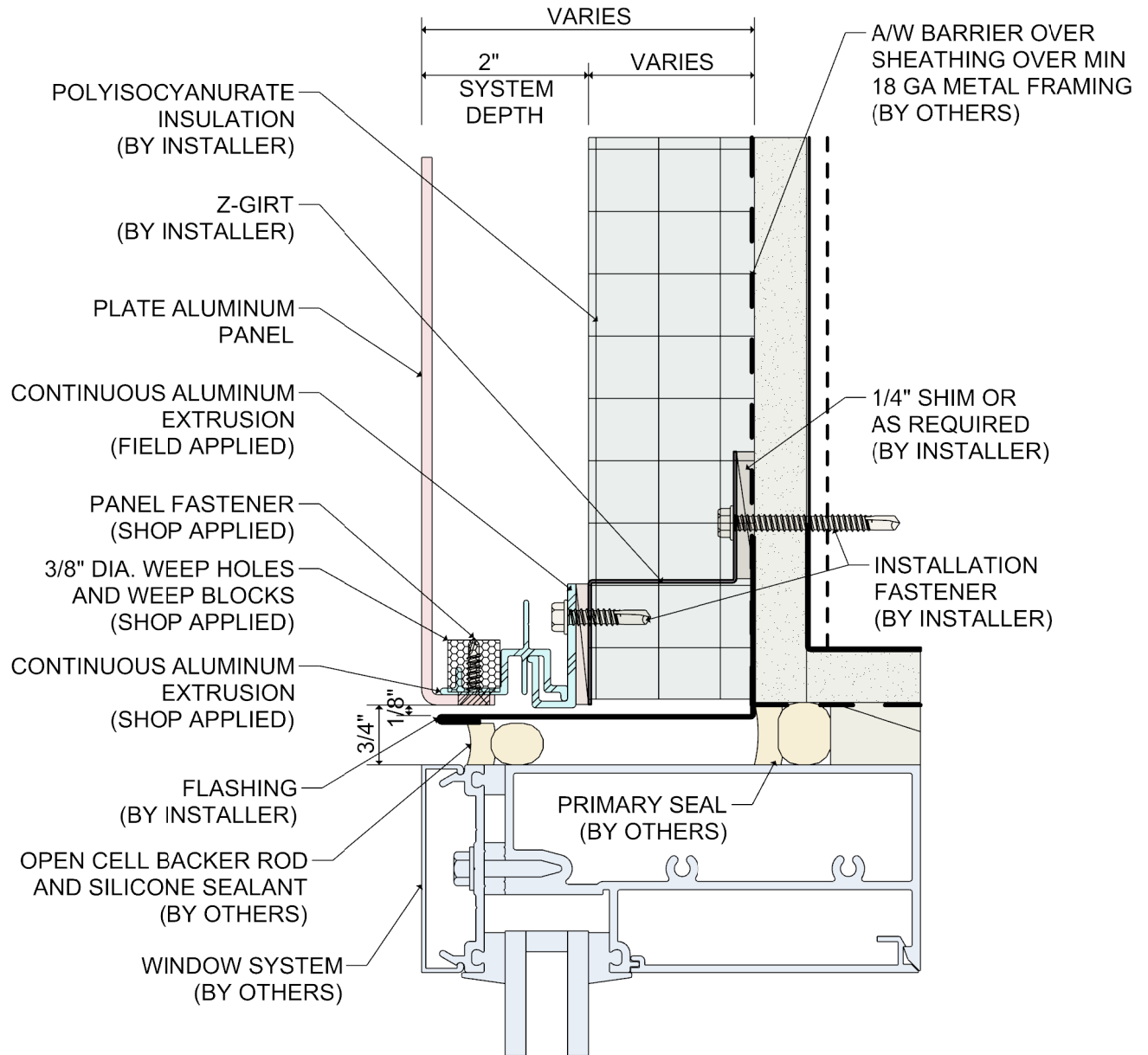


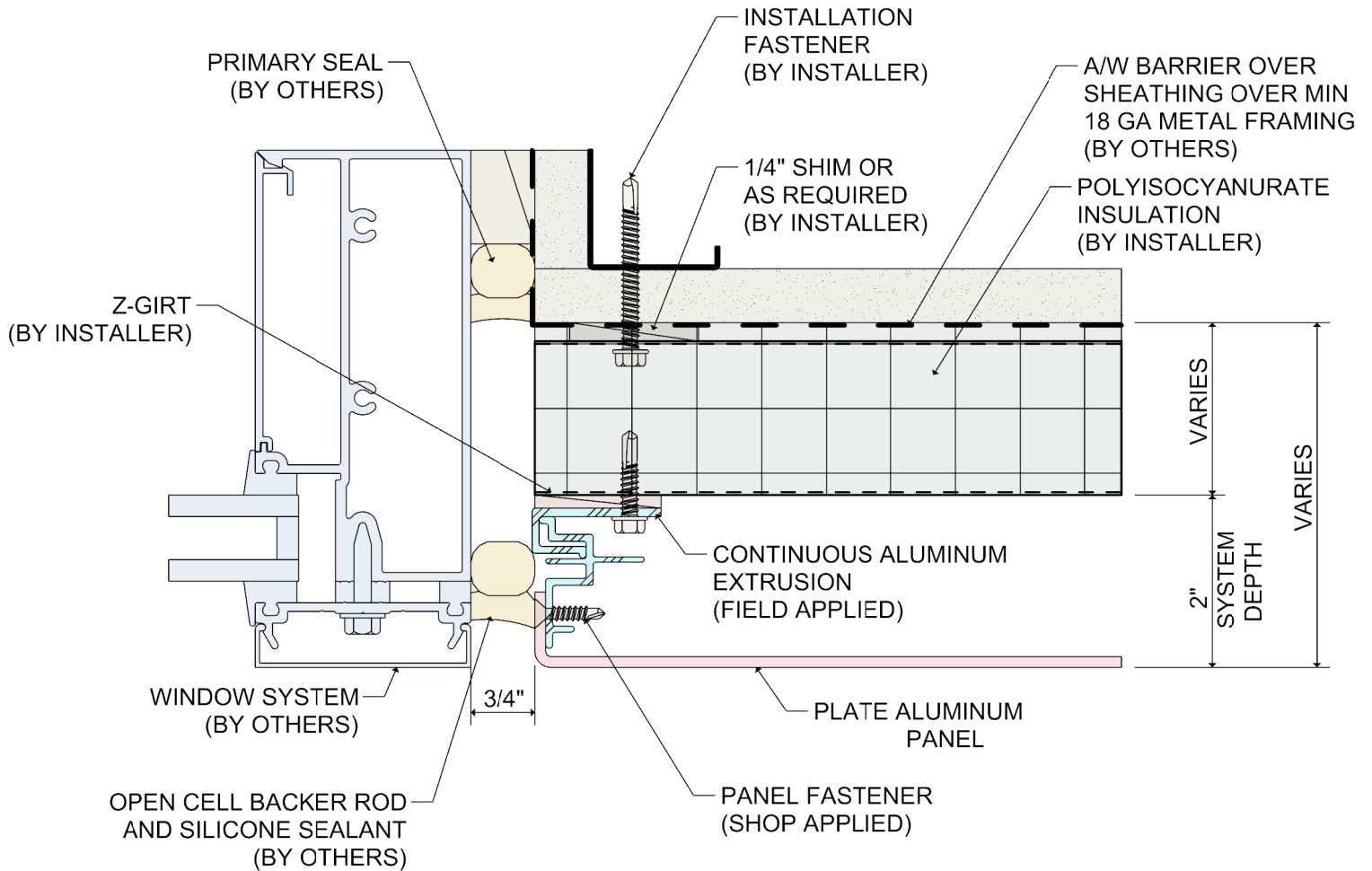
DETAIL:

4

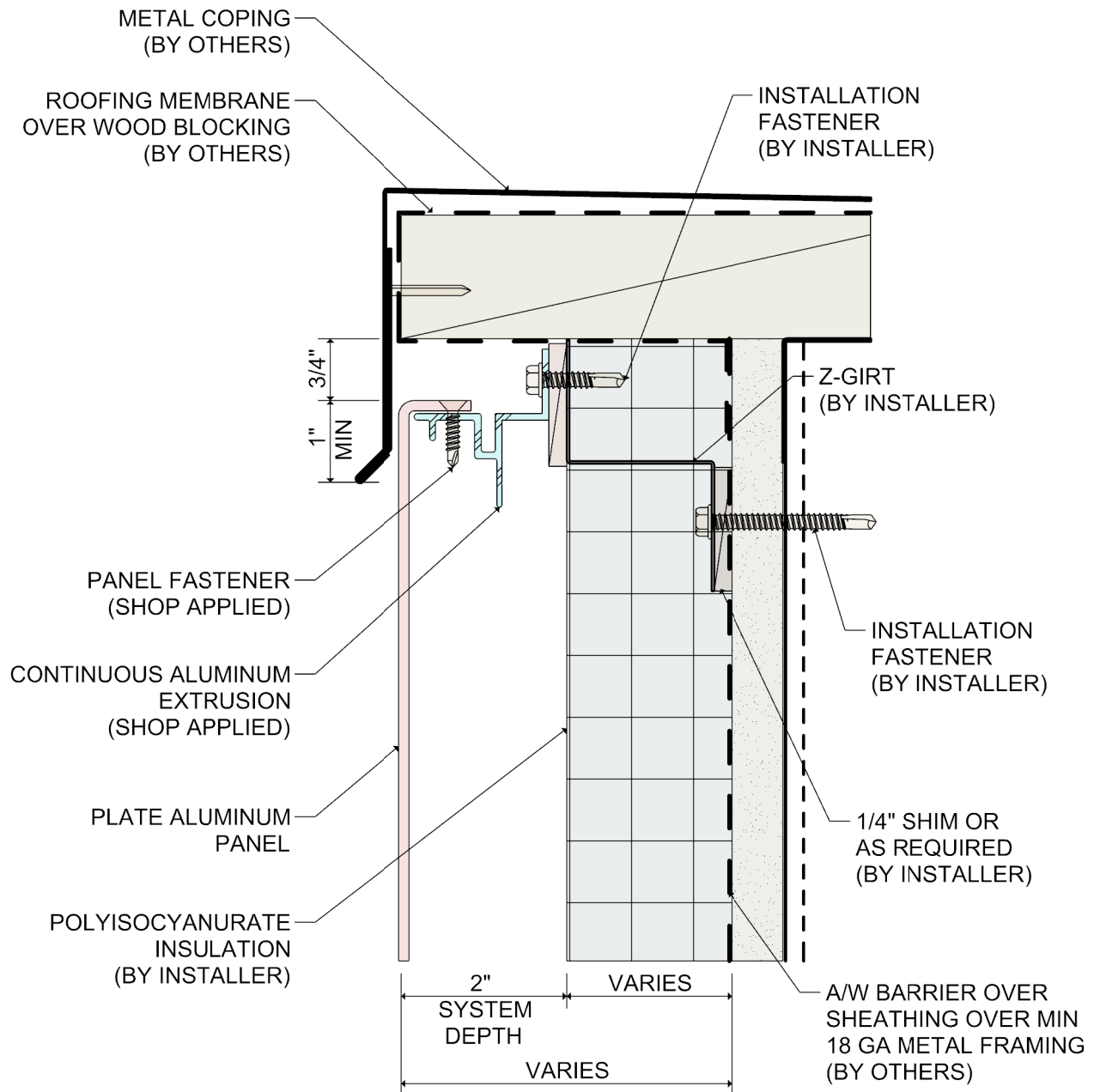
SYSTEM 3550    RAINSCREEN SYSTEM

WINDOW SILL DETAIL

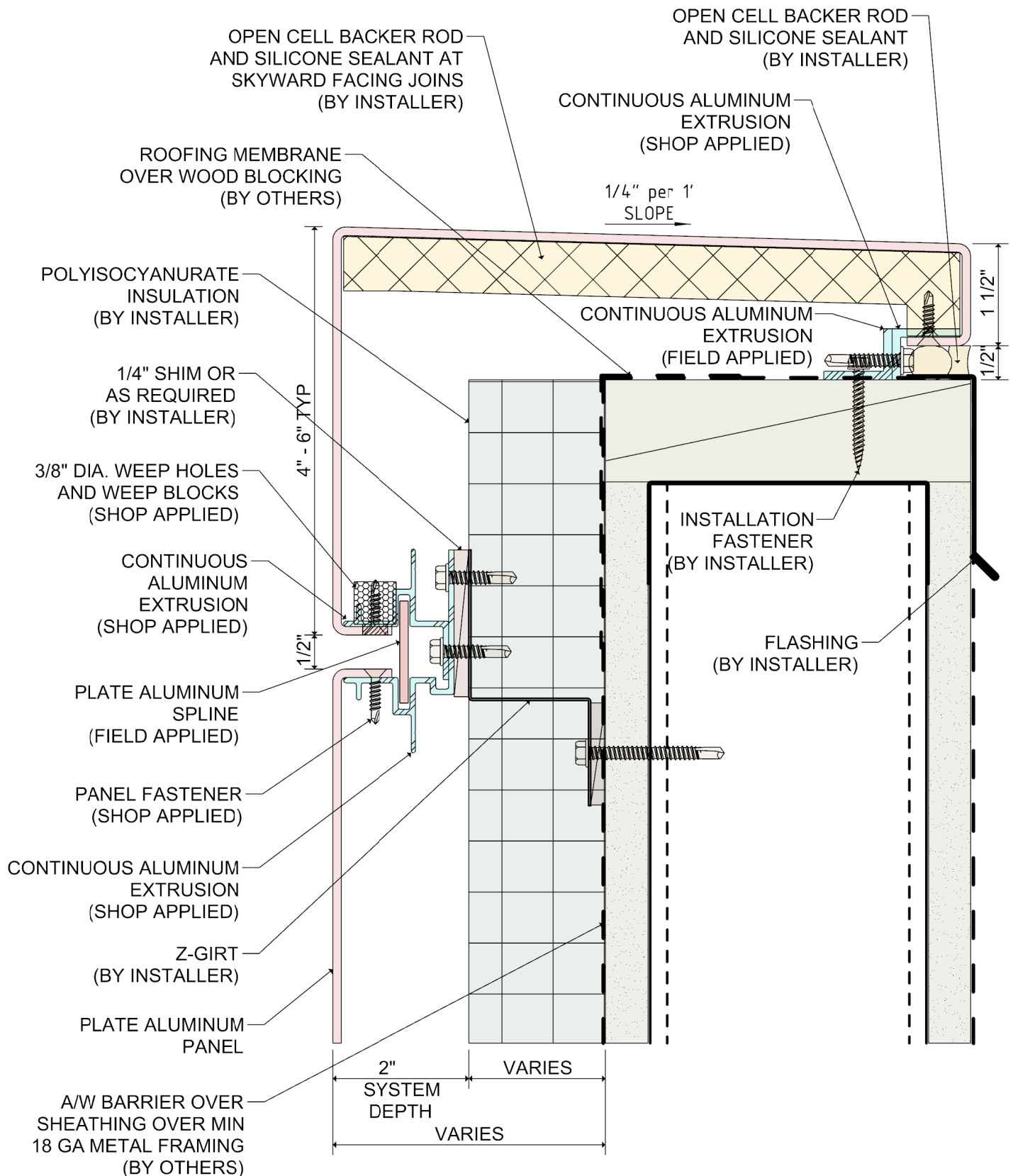












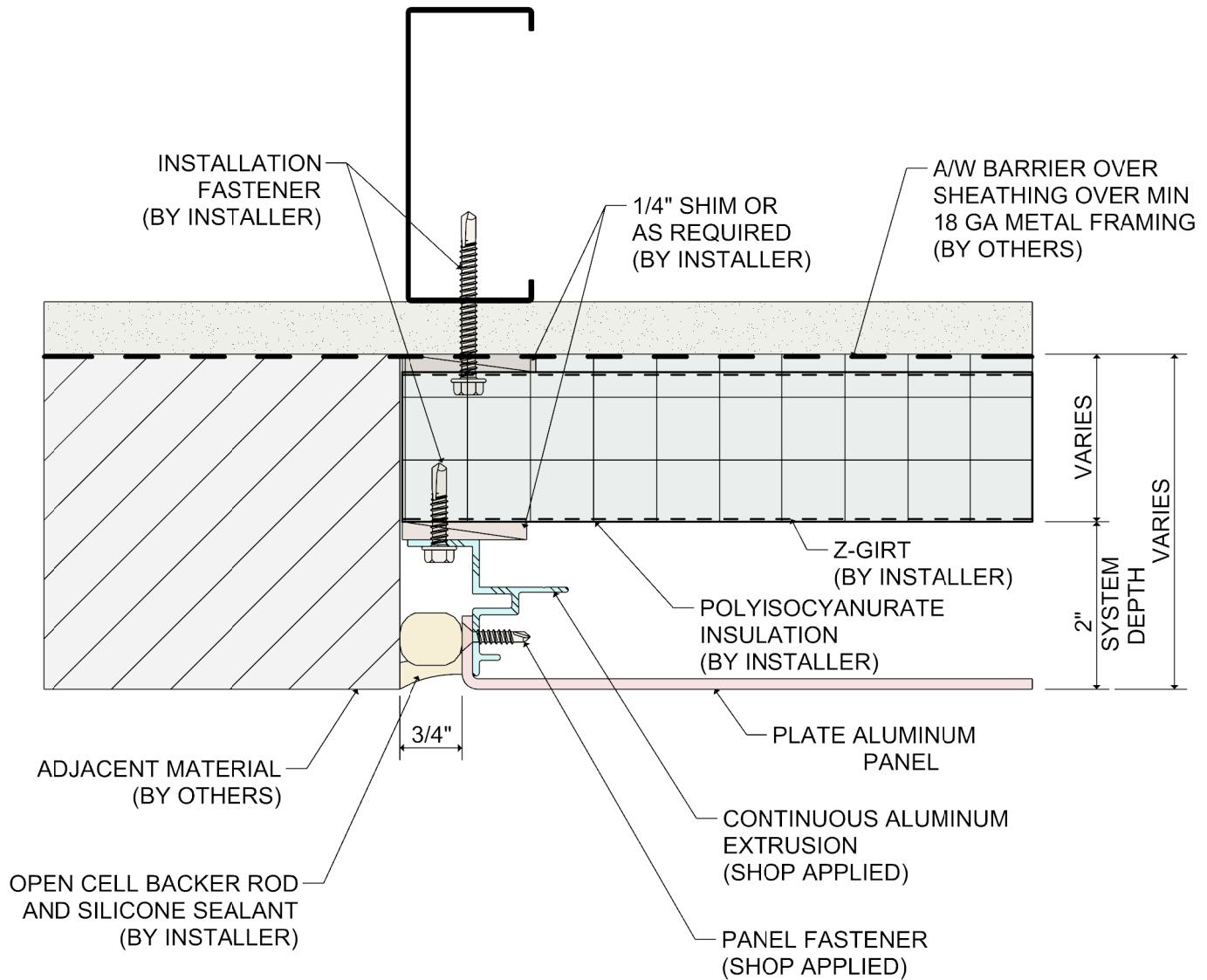
DETAIL:

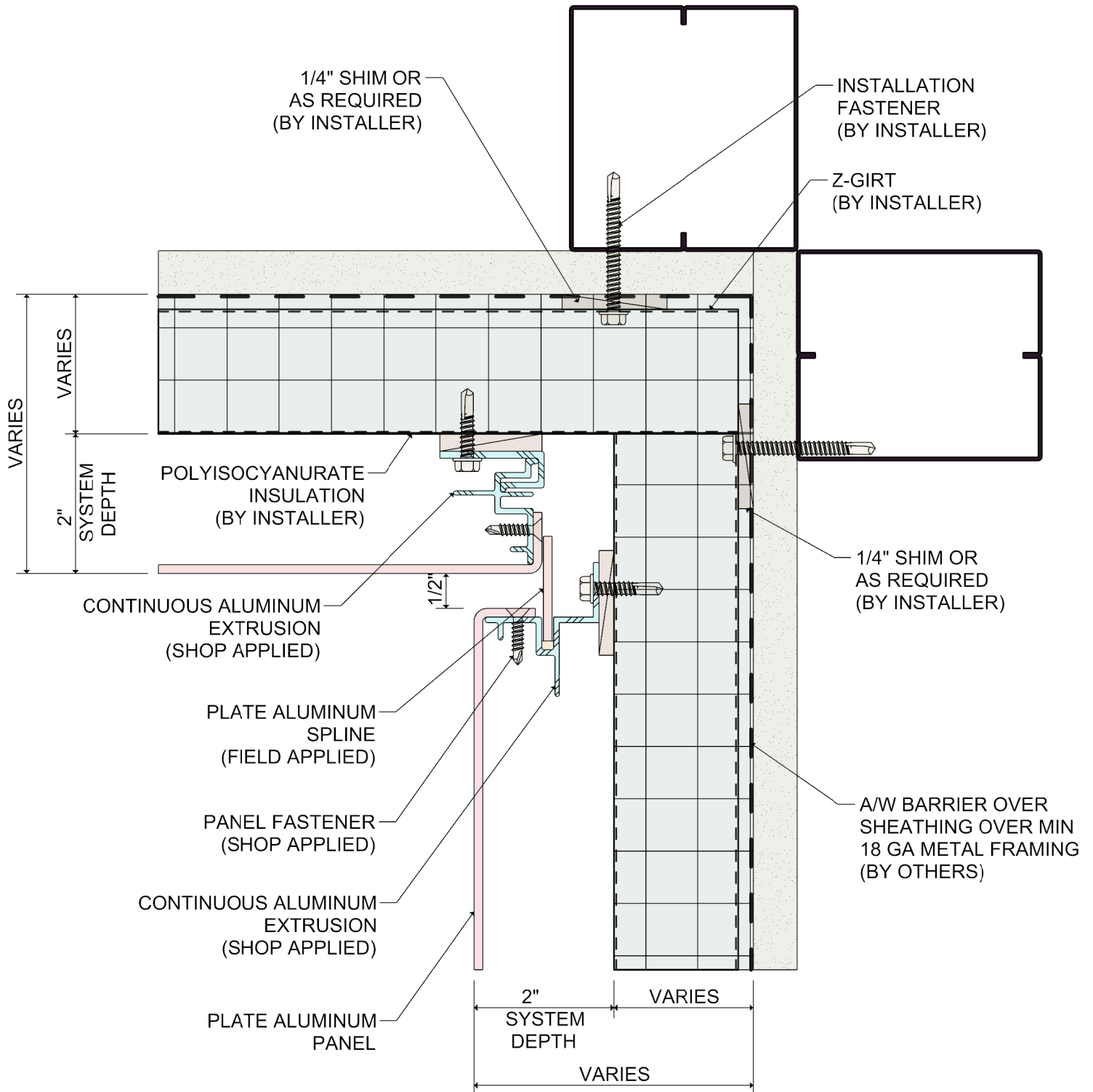
8

SYSTEM 3550

RAINSCREEN SYSTEM

PLATE ALUMINUM COPING DETAIL





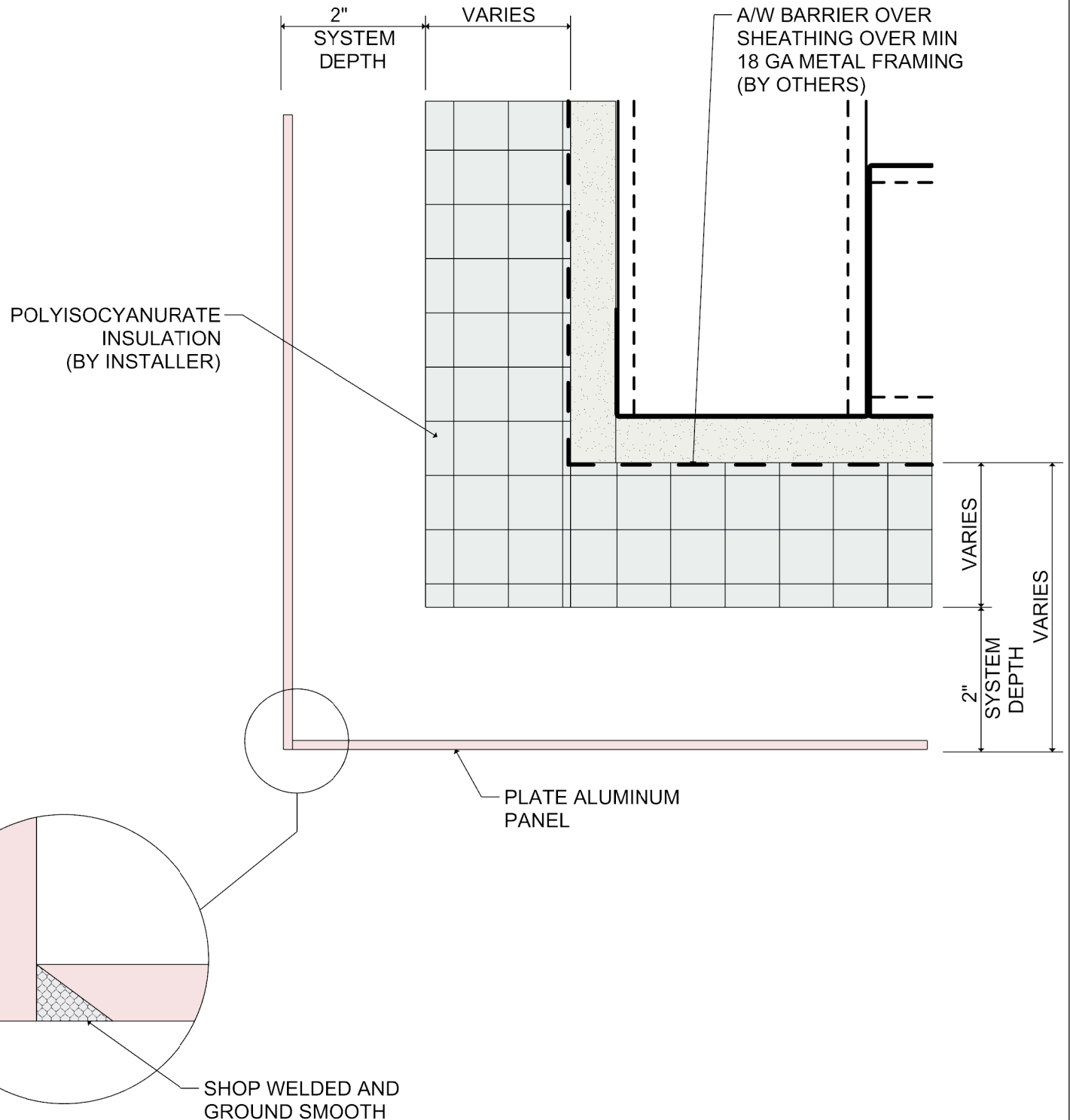
DETAIL:

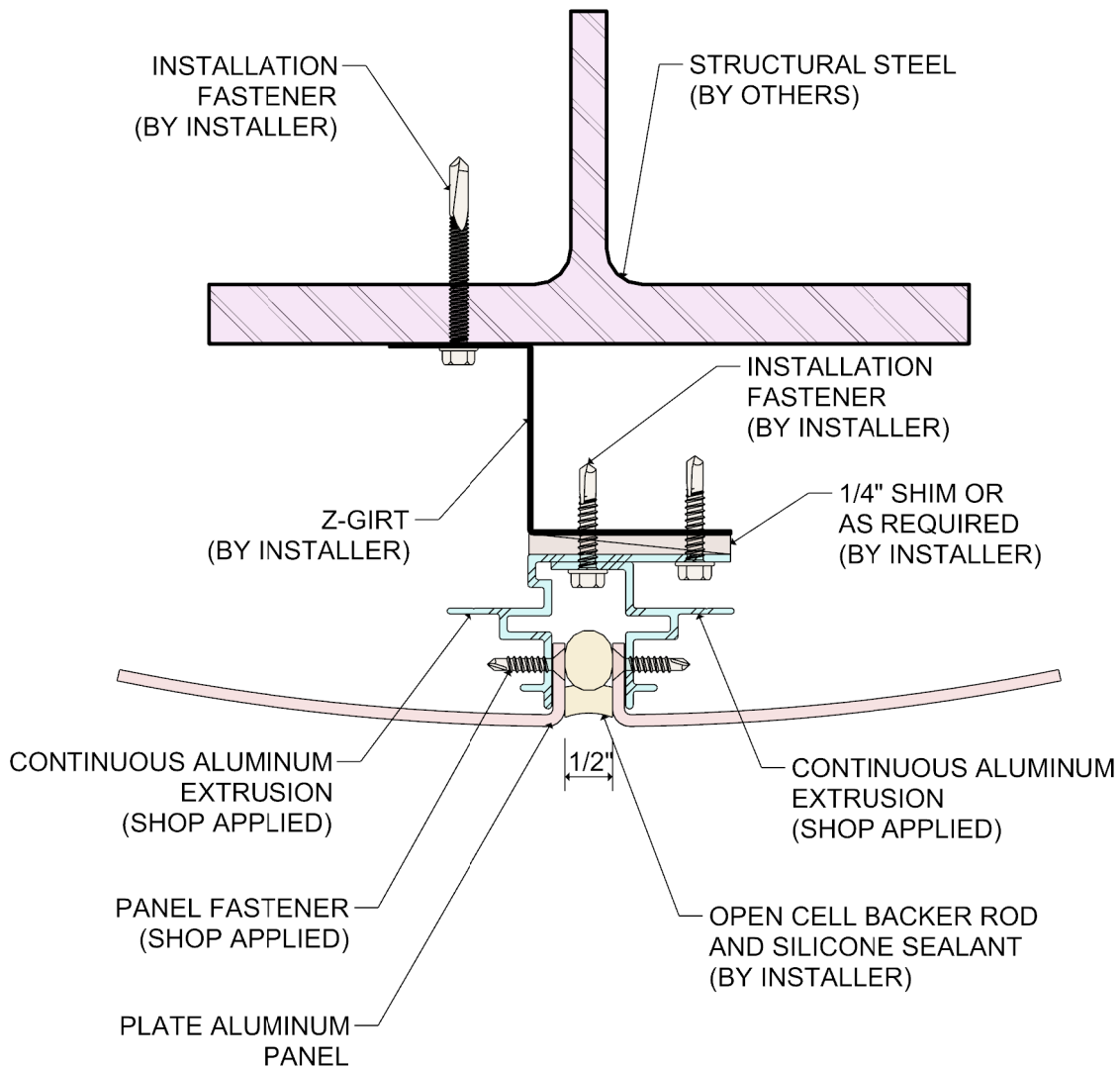
10

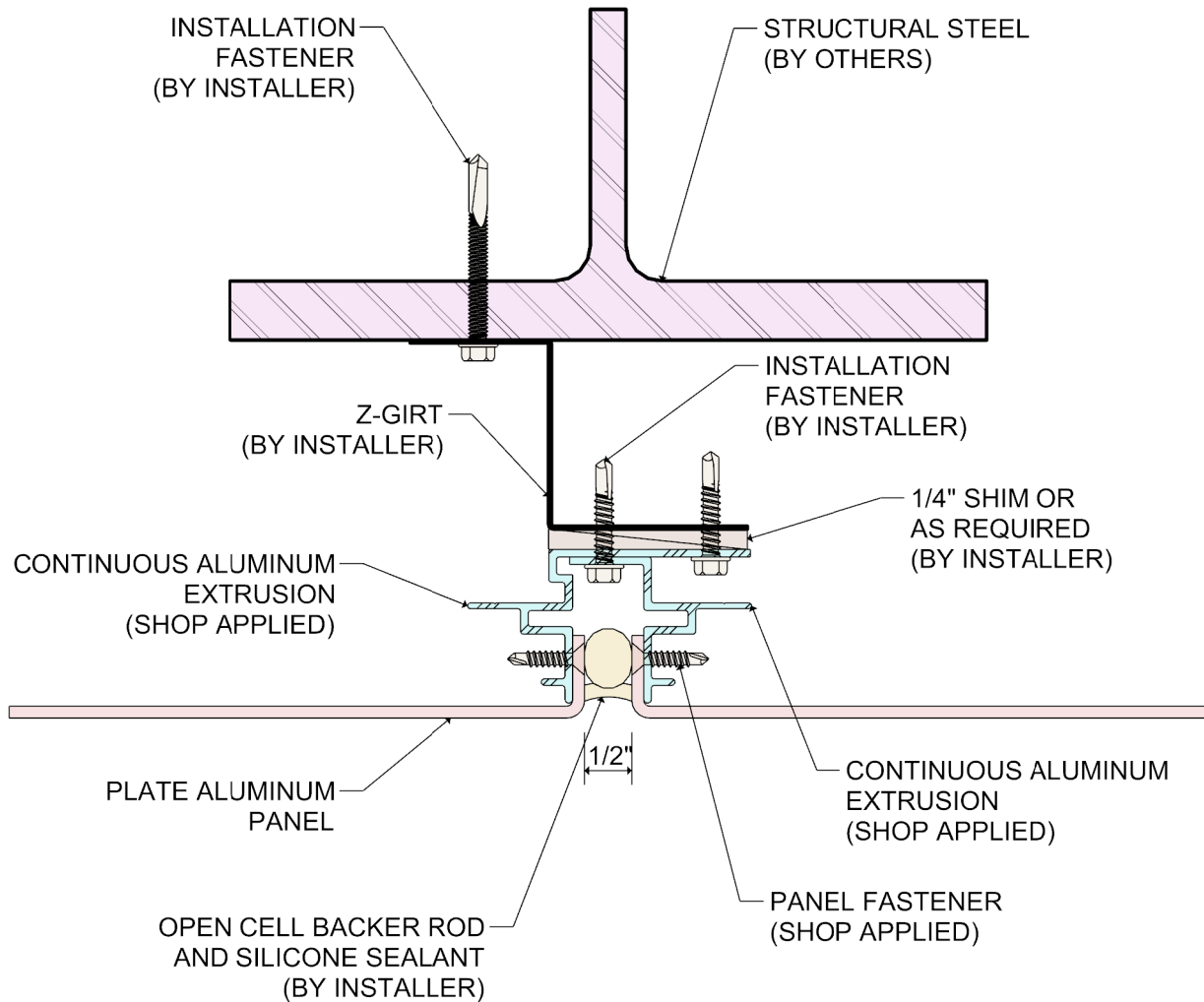
SYSTEM 3550

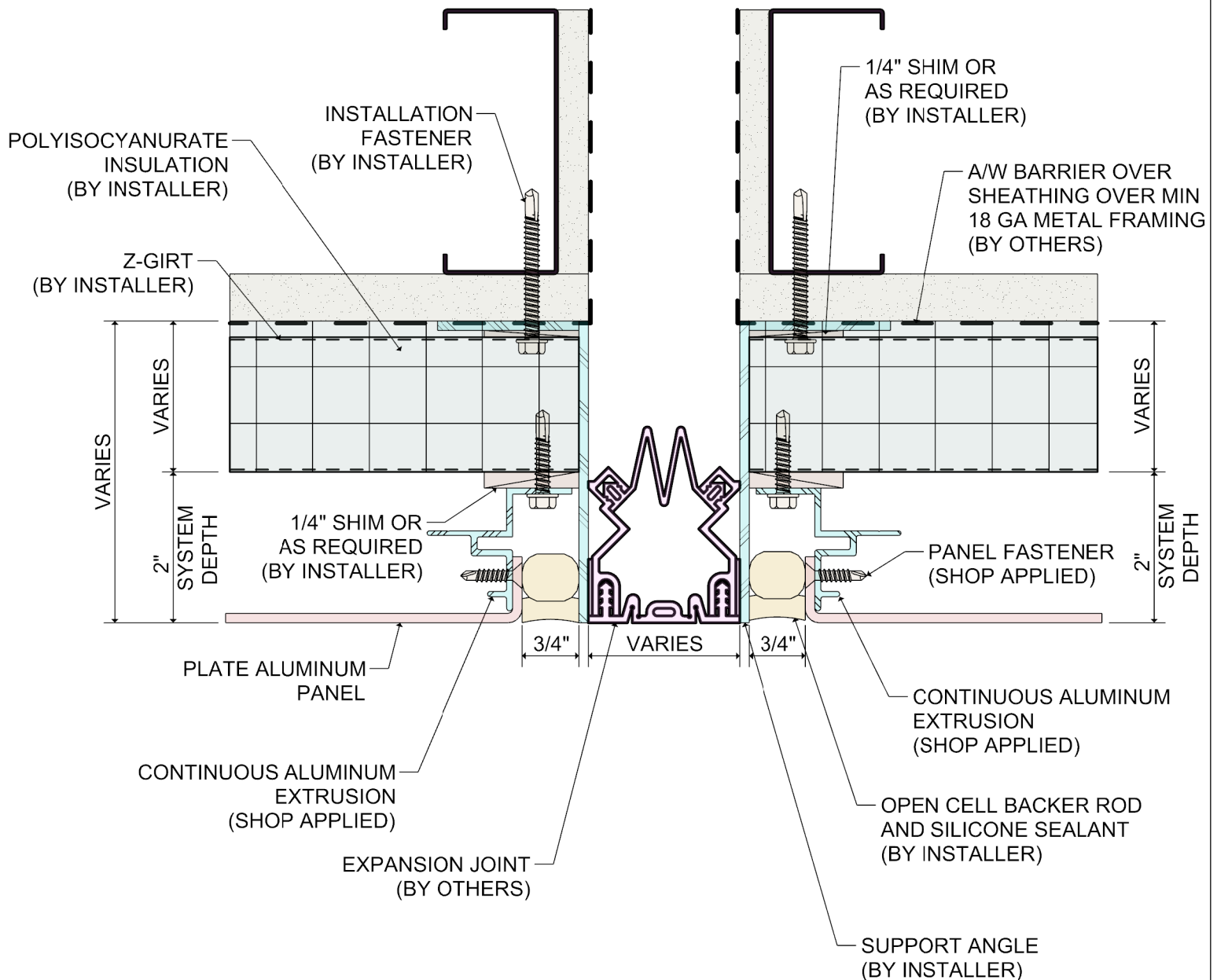
RAINSCREEN SYSTEM

INSIDE CORNER DETAIL

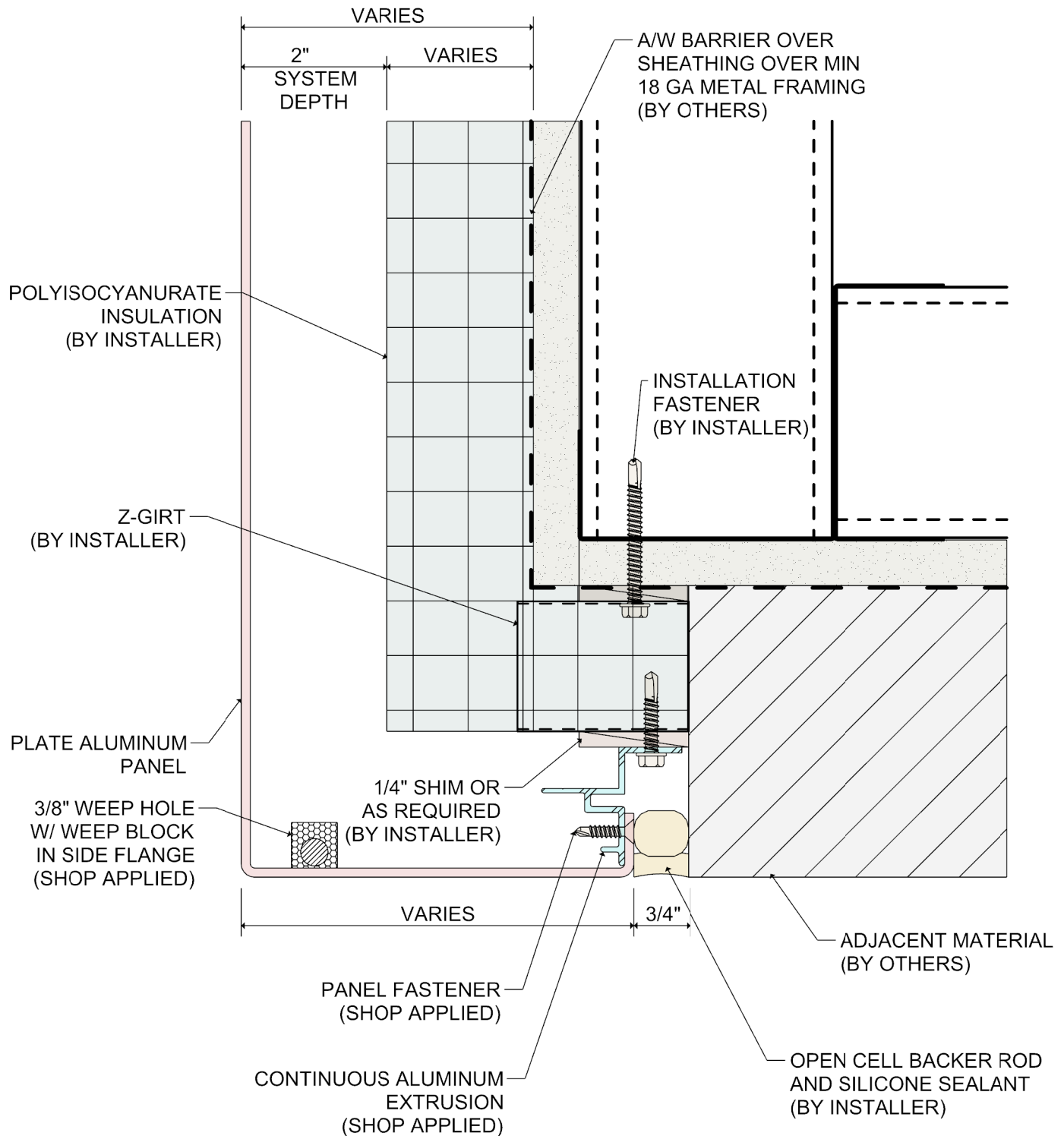


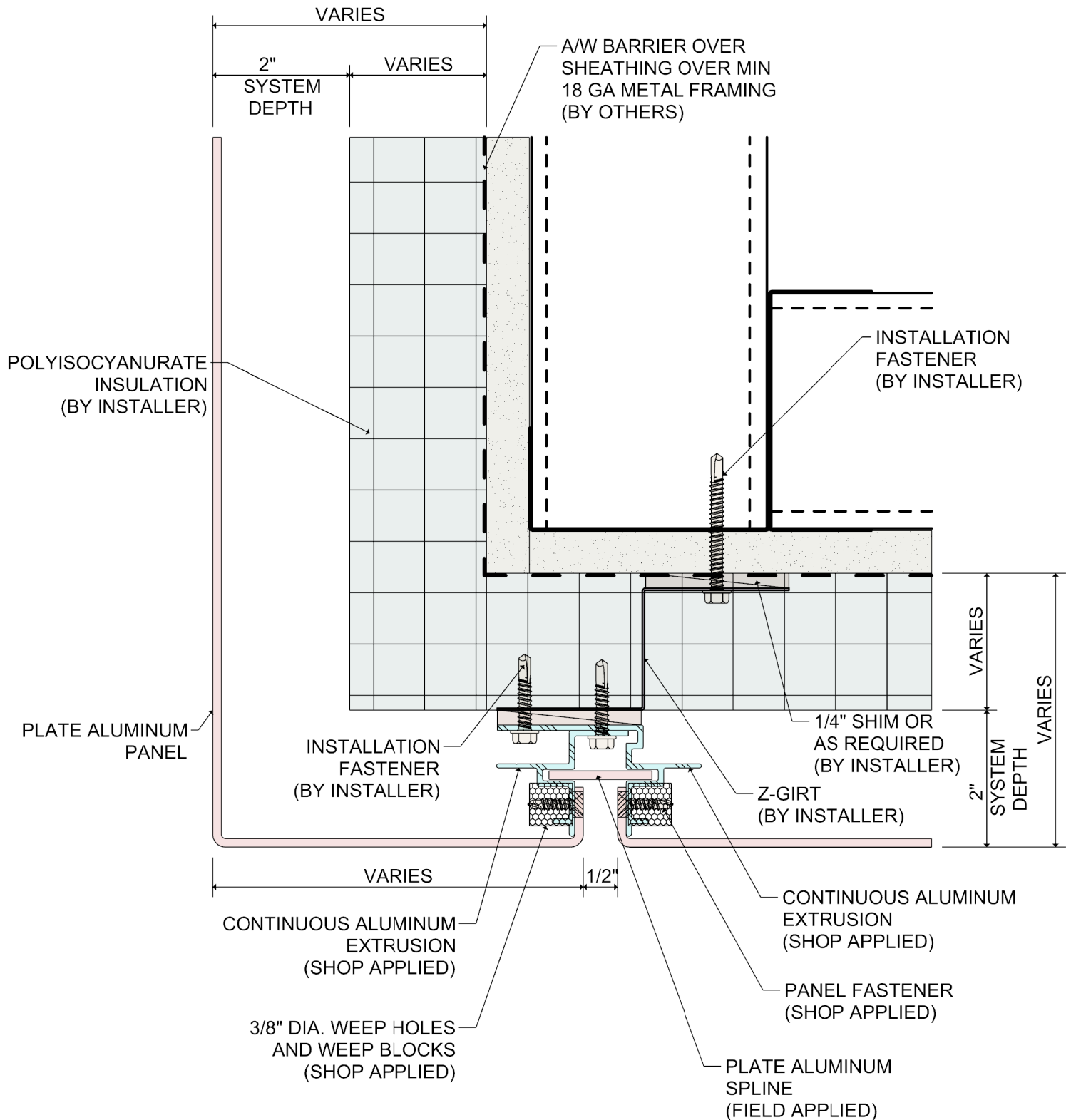










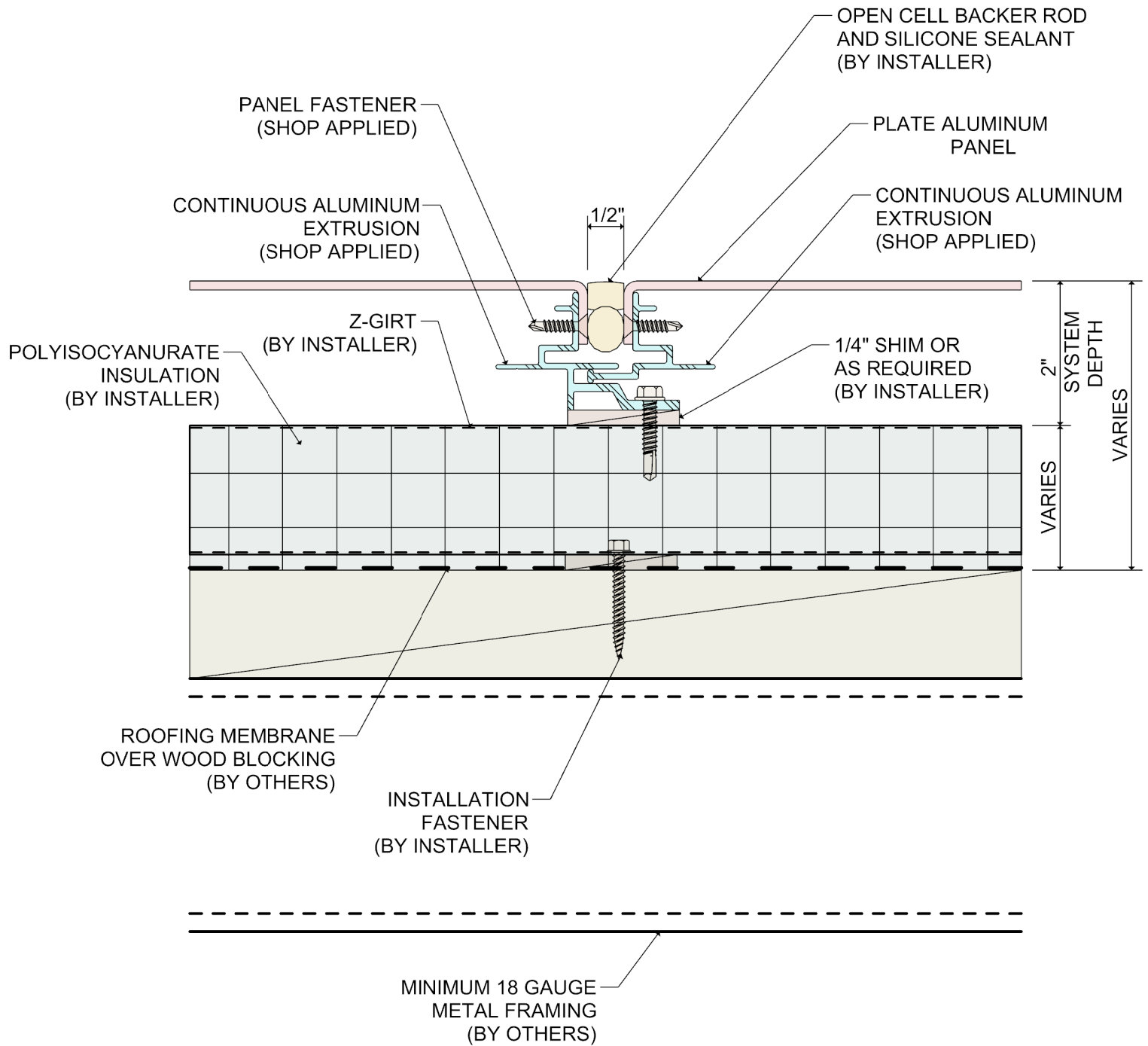


DETAIL:

15

SYSTEM 3550    RAINSCREEN SYSTEM

SOFFIT TRANSITION



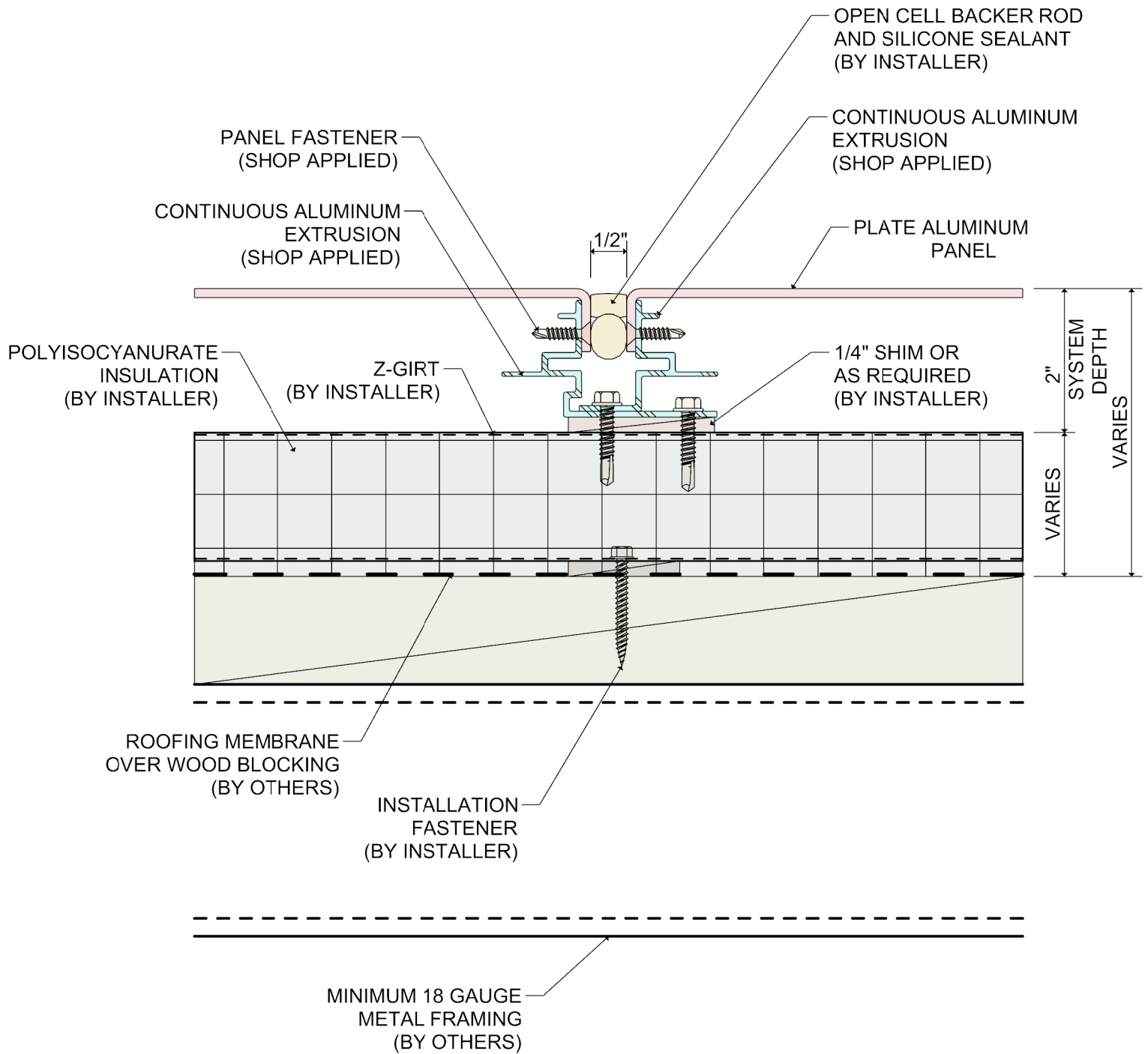
DETAIL:

16

SYSTEM 3550

RAINSCREEN SYSTEM

SKYWARD FACING JOINT- THERMAL EXPANSION



DETAIL:  
**16A**

SYSTEM 3550    RAINSCREEN SYSTEM  
SKYWARD FACING JOINT- HARD FASTENED

