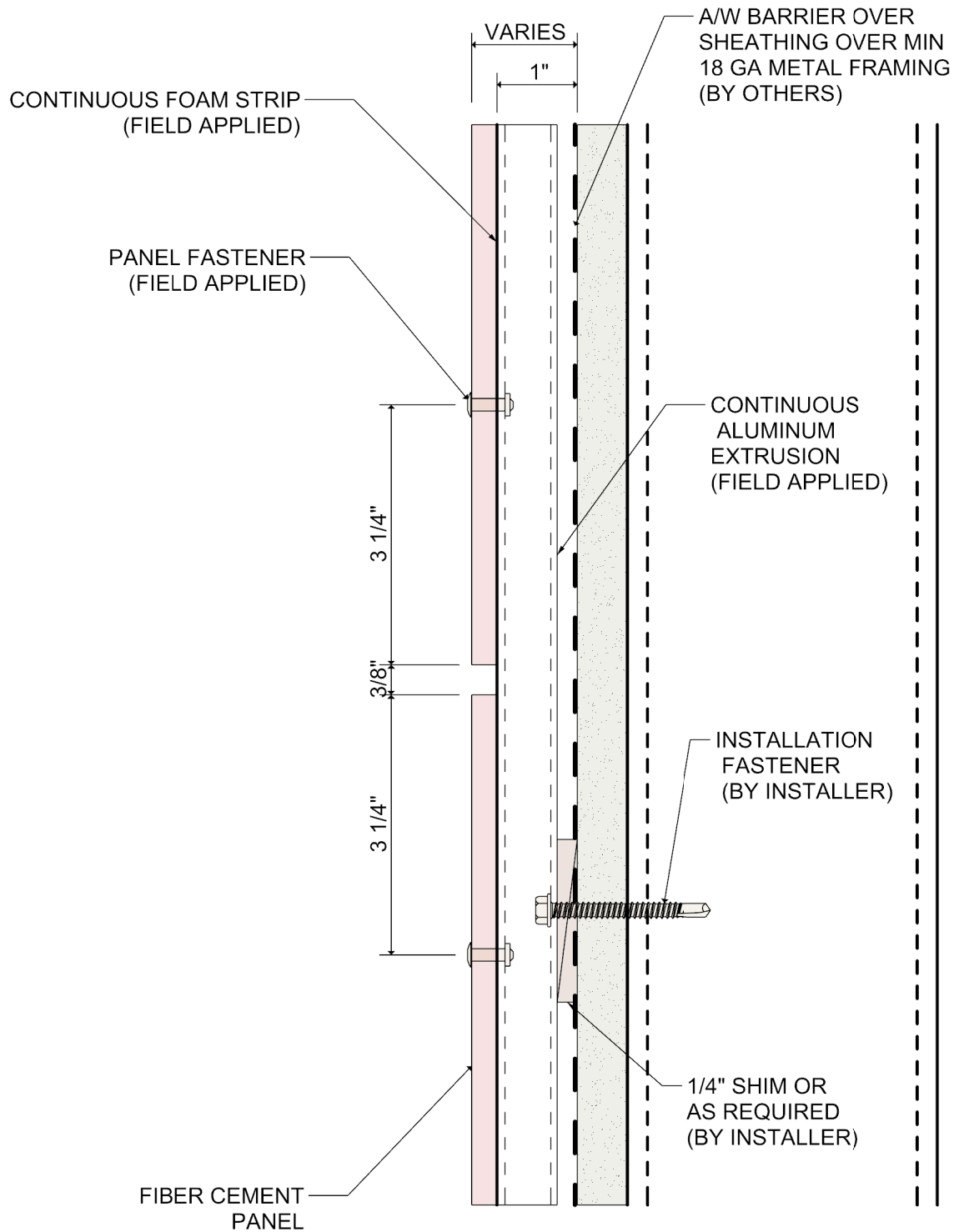


System 5100 Fiber Cement Panel Rainscreen Attachment System

Standard Details

Revised November, 2020



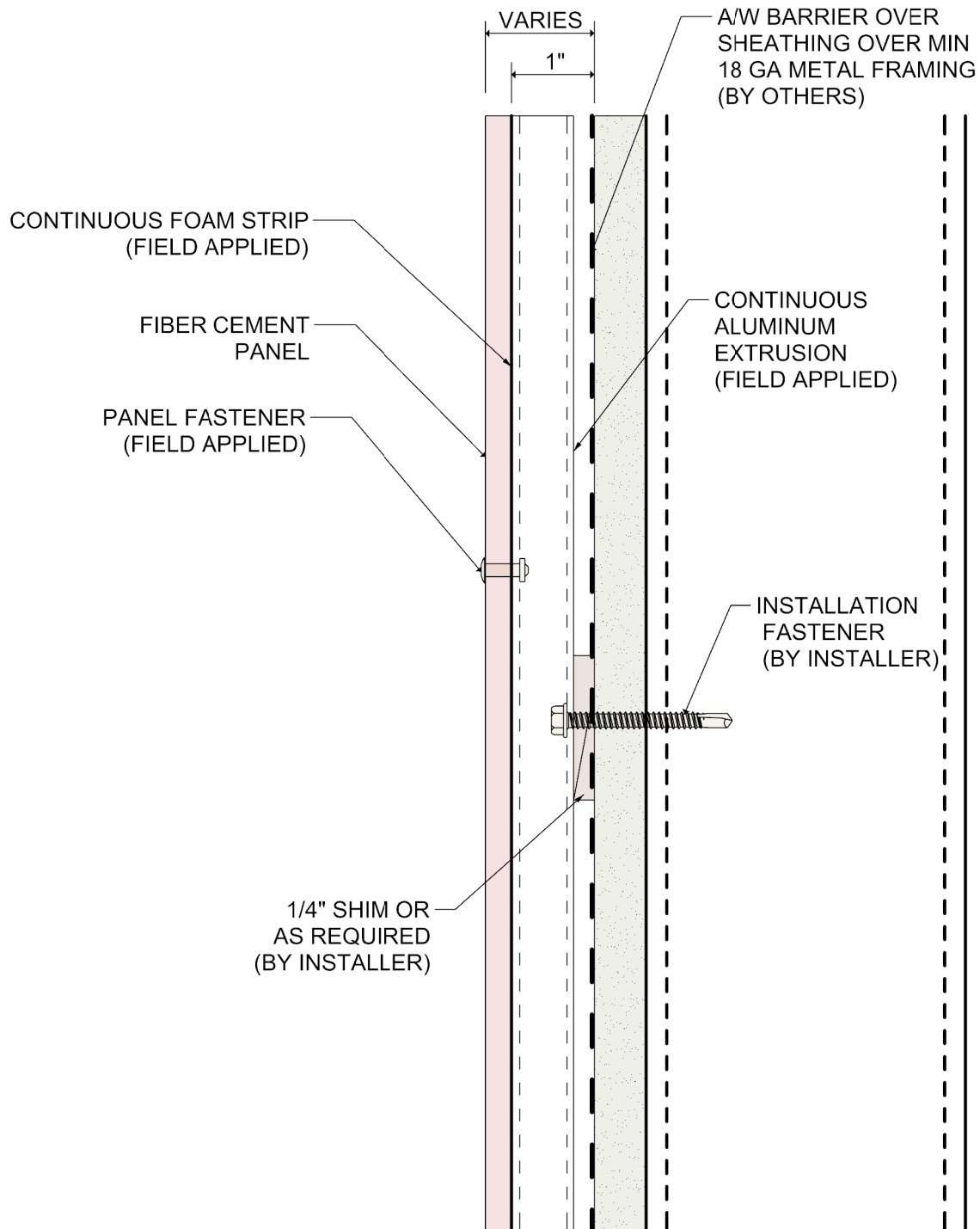
DETAIL:

1

SYSTEM 5100

FIBER CEMENT PANEL RAINSCREEN

HORIZONTAL PANEL JOINT



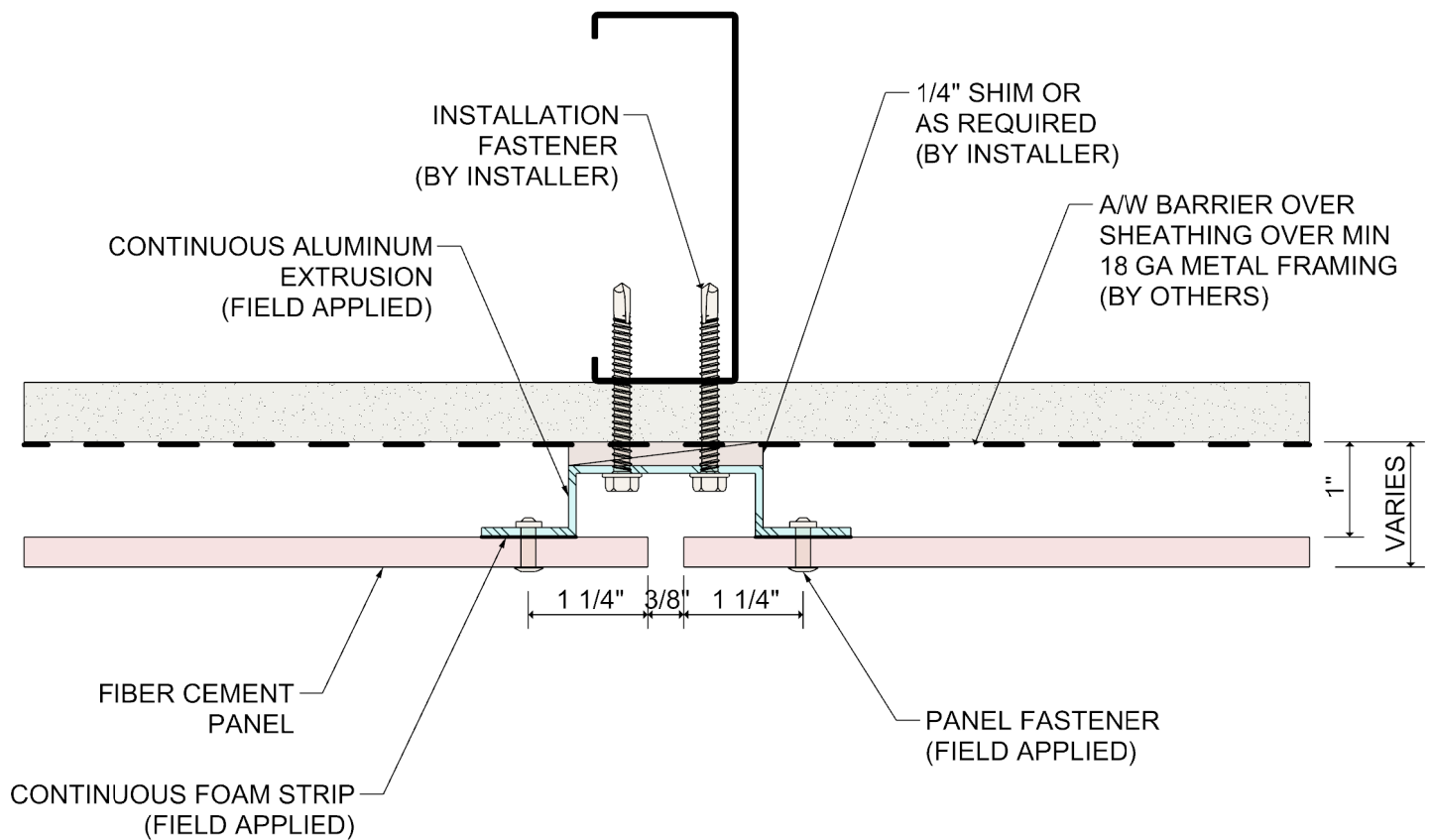
DETAIL:

2

SYSTEM 5100

FIBER CEMENT PANEL RAINSCREEN

HORIZONTAL MID PANEL DETAIL



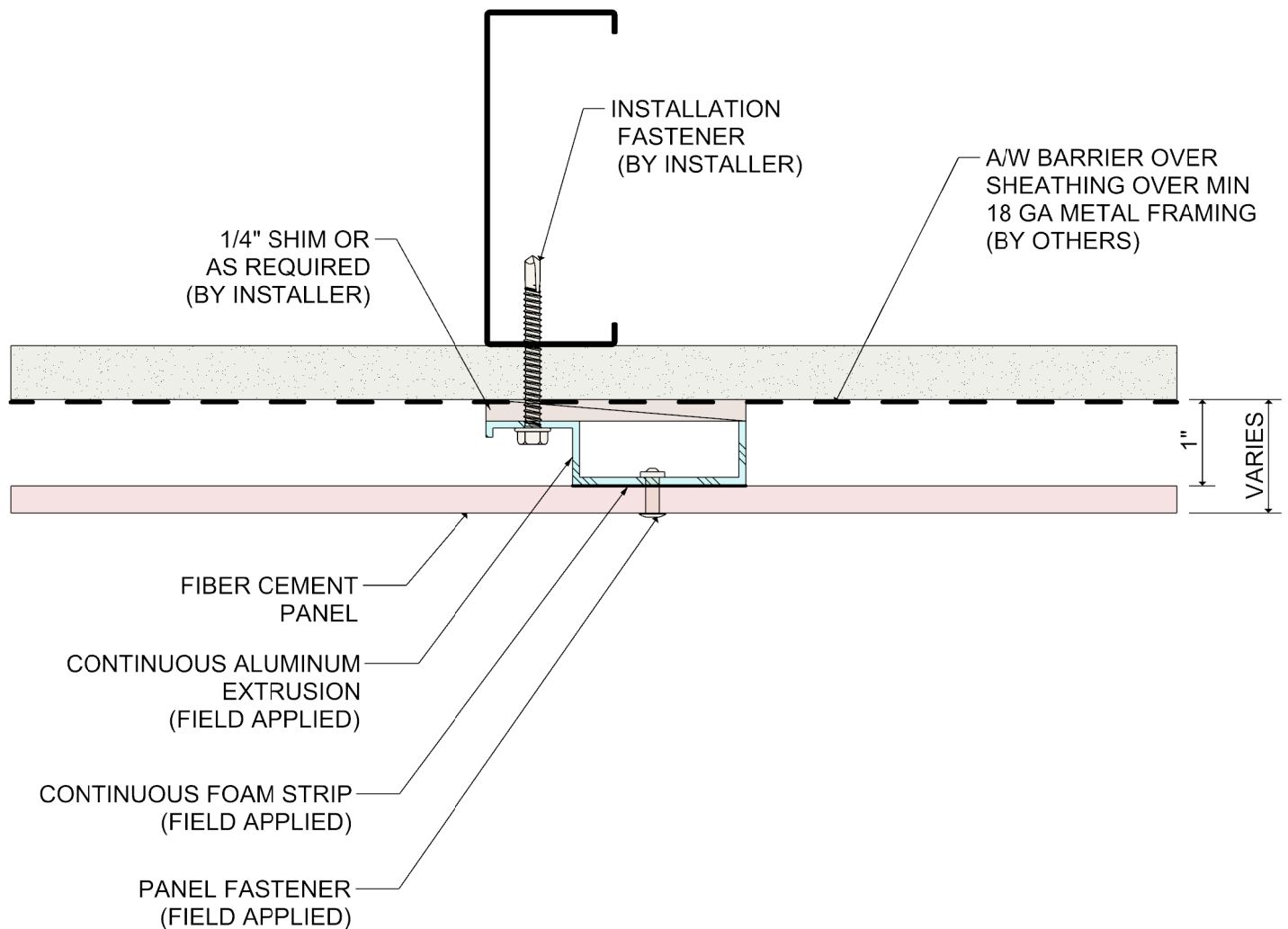
DETAIL:

3

SYSTEM 5100

FIBER CEMENT PANEL RAINSCREEN

VERTICAL PANEL JOINT



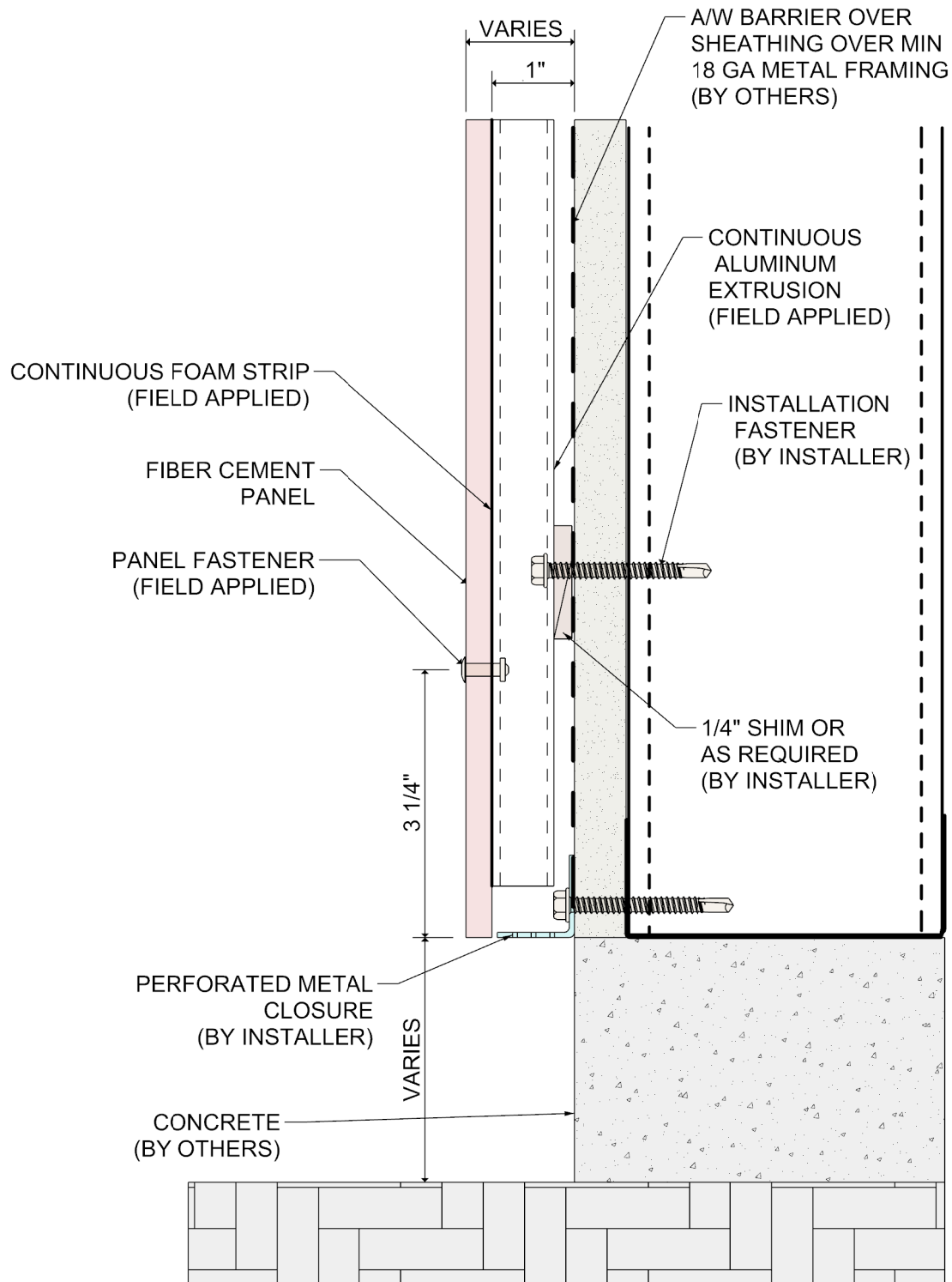
DETAIL:

4

SYSTEM 5100

FIBER CEMENT PANEL RAINSCREEN

VERTICAL MID PANEL DETAIL



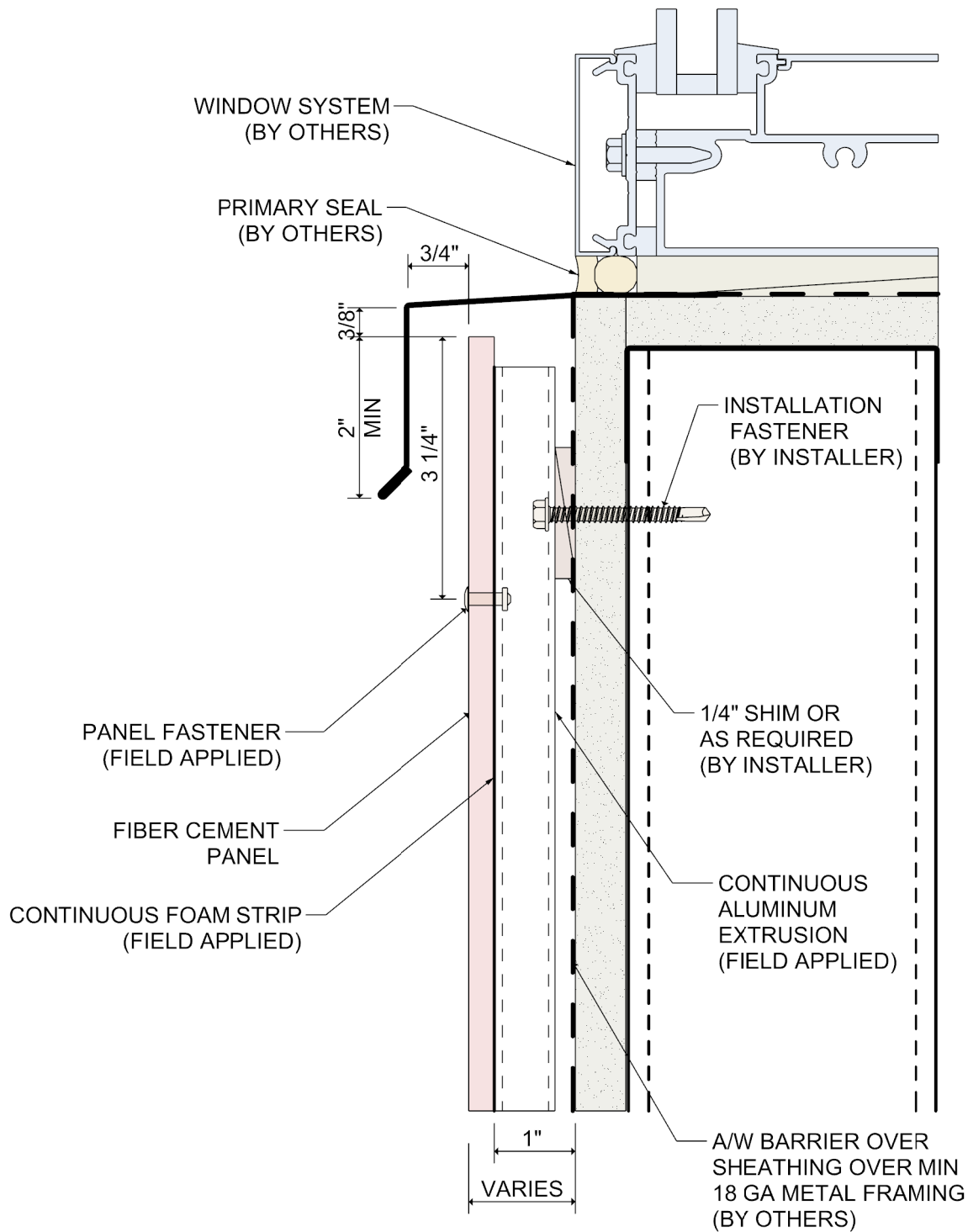
DETAIL:

5

SYSTEM 5100

FIBER CEMENT PANEL RAINSCREEN

BASE OF WALL DETAIL



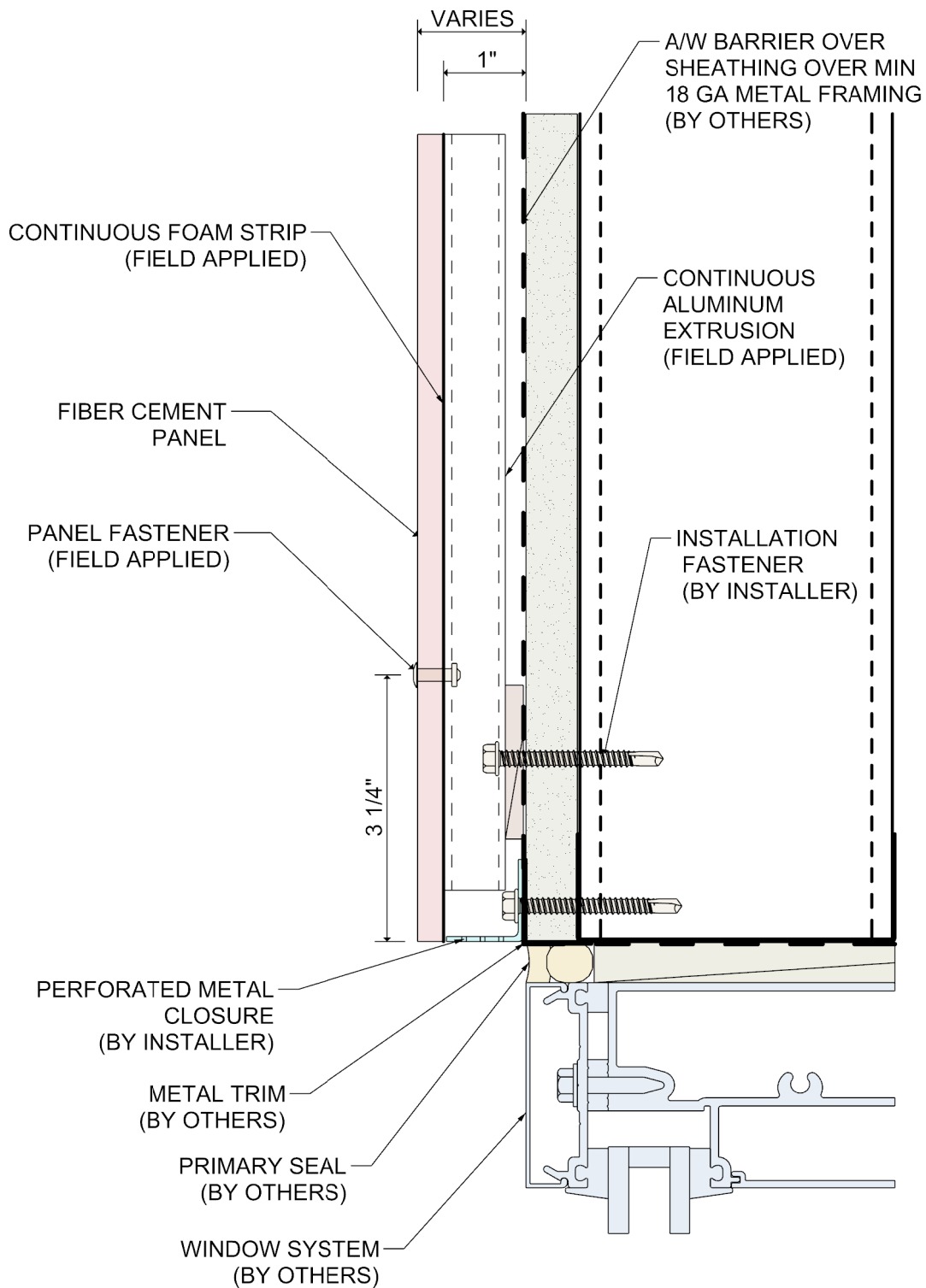
DETAIL:

6

SYSTEM 5100

FIBER CEMENT PANEL RAINSCREEN

WINDOW SILL DETAIL



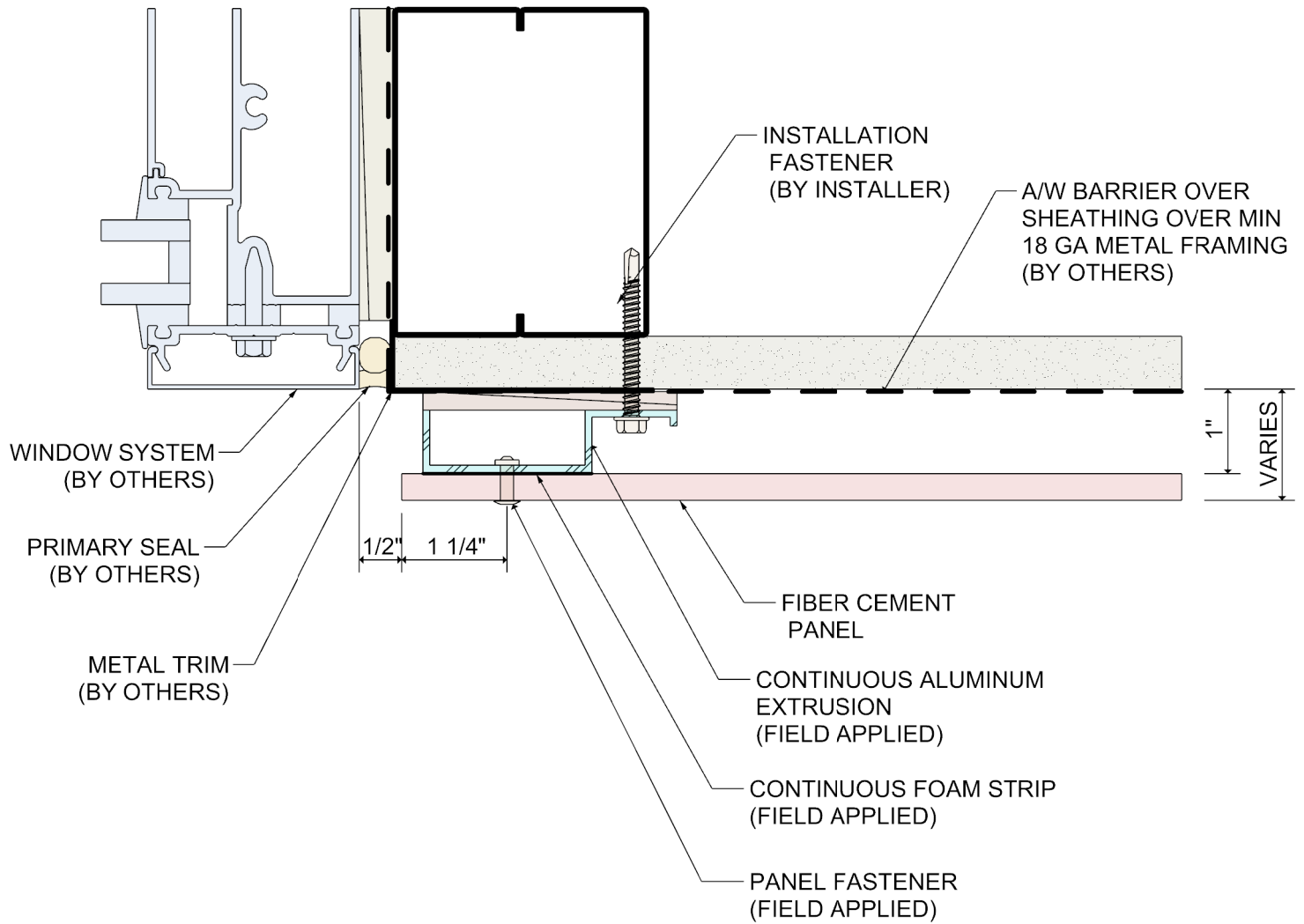
DETAIL:

7

SYSTEM 5100

FIBER CEMENT PANEL RAINSCREEN

WINDOW HEAD DETAIL



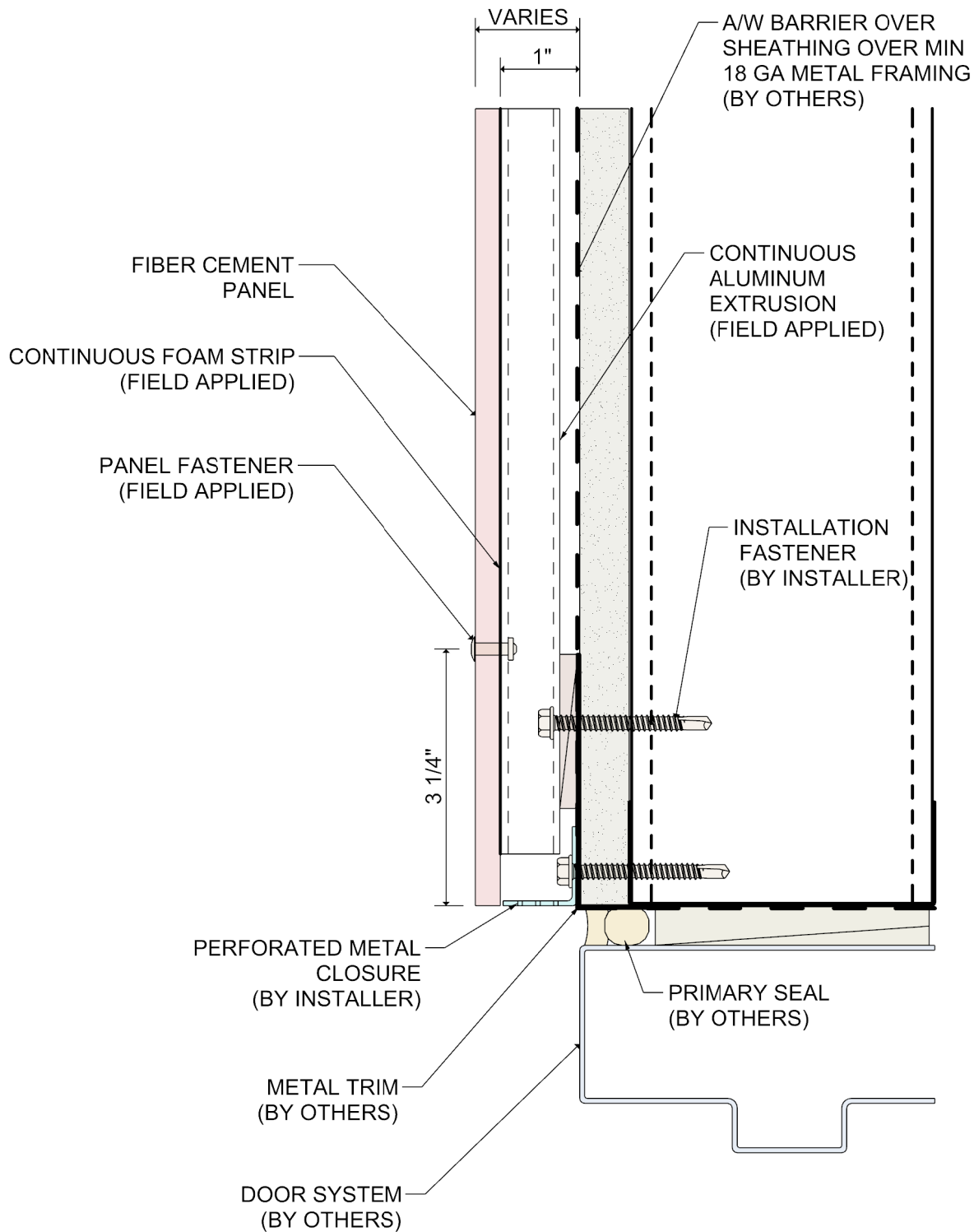
DETAIL:

8

SYSTEM 5100

FIBER CEMENT PANEL RAINSCREEN

TERMINATION AT WINDOW JAMB



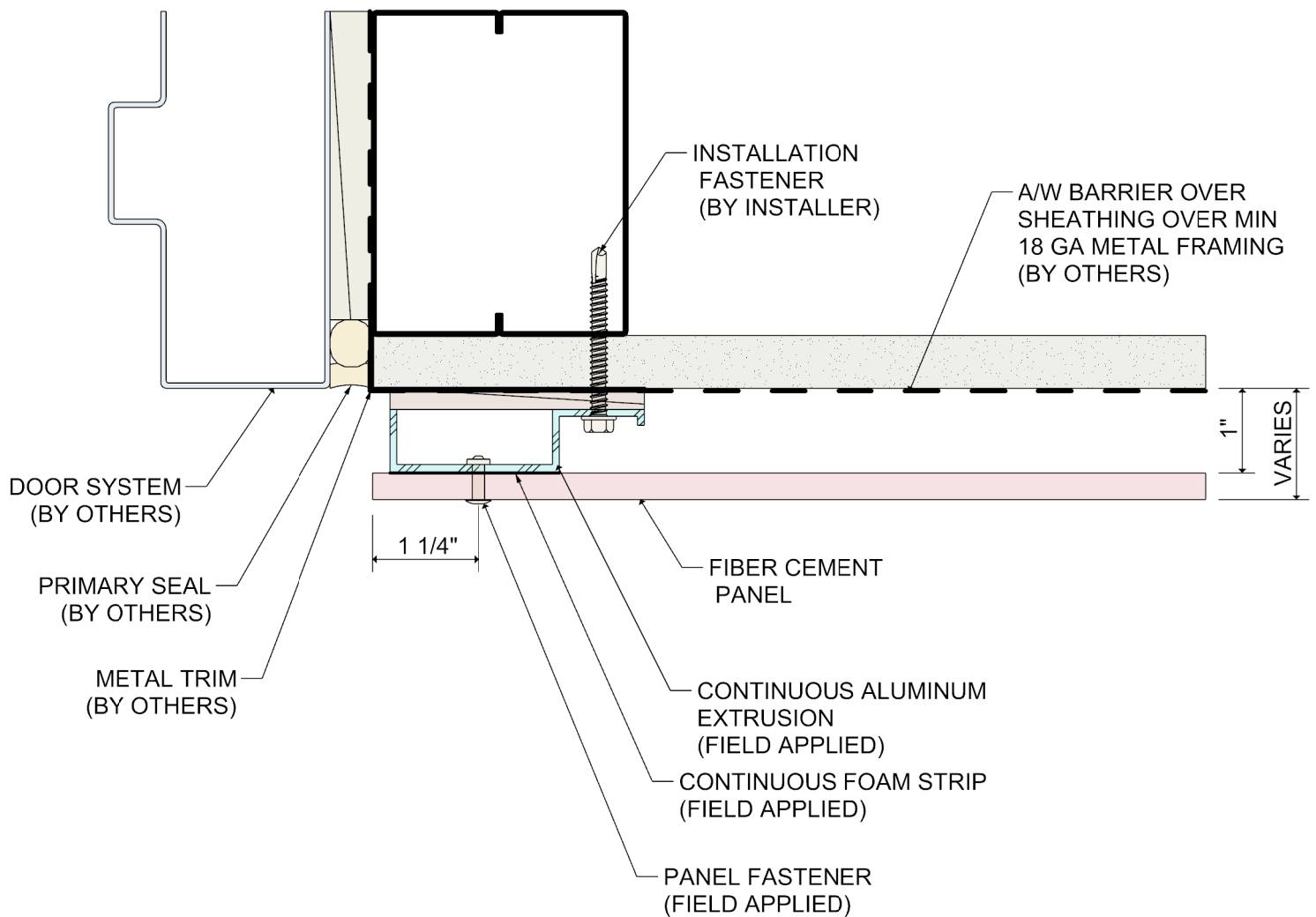
DETAIL:

9

SYSTEM 5100

FIBER CEMENT PANEL RAINSCREEN

DOOR HEAD DETAIL



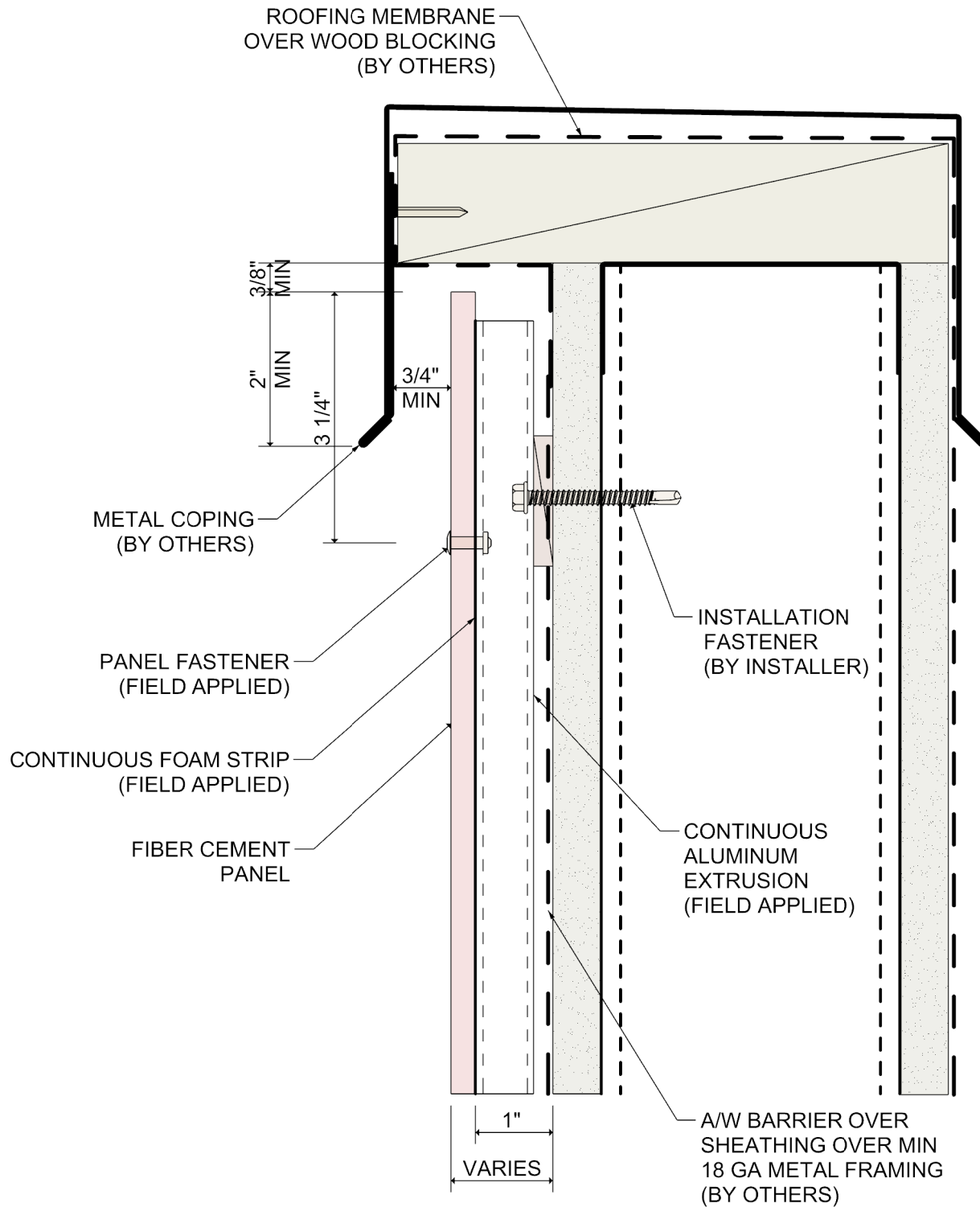
DETAIL:

10

SYSTEM 5100

FIBER CEMENT PANEL RAINSCREEN

TERMINATION AT DOOR JAMB



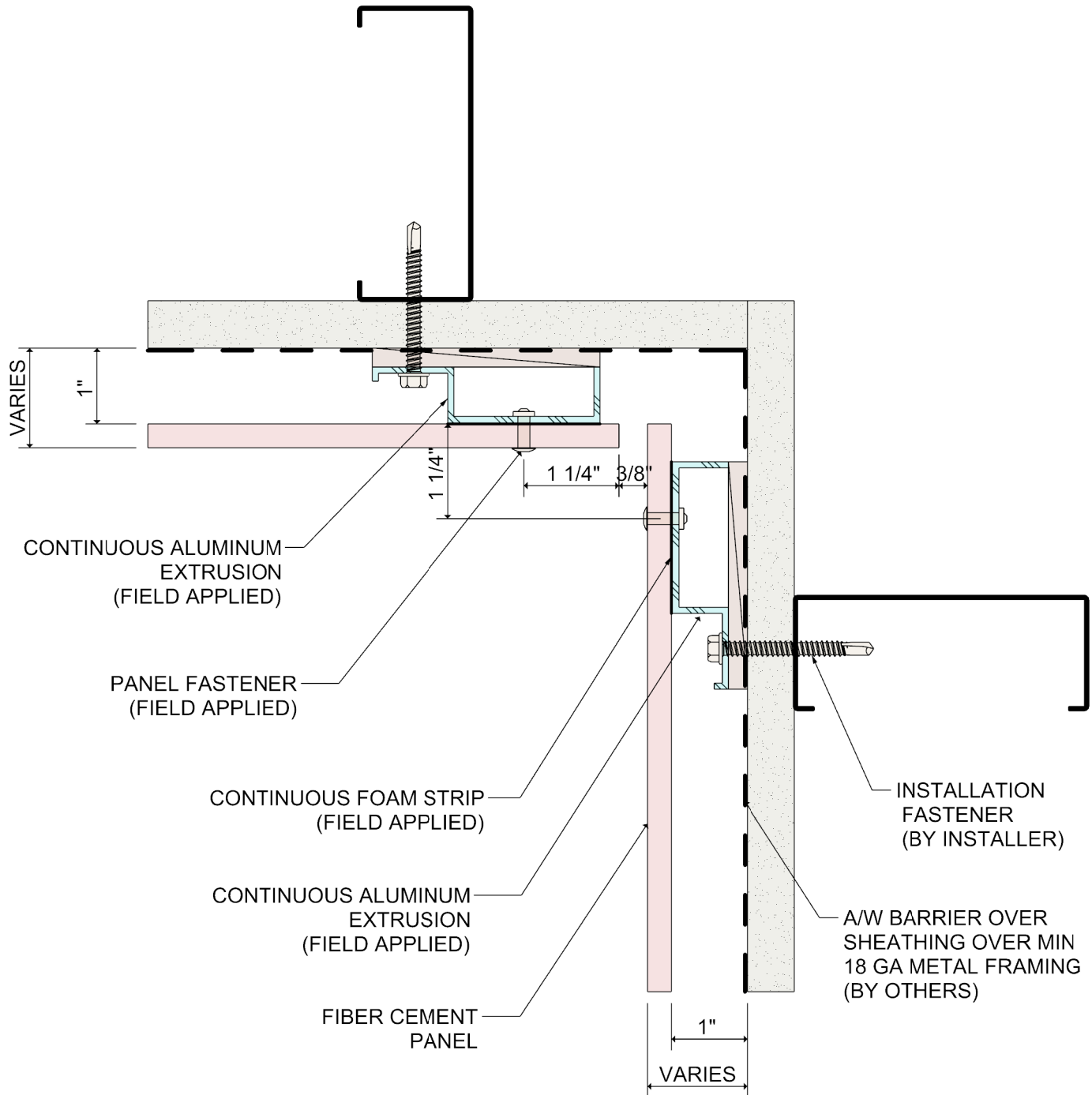
DETAIL:

11

SYSTEM 5100

FIBER CEMENT PANEL RAINSCREEN

TERMINATION AT PARAPET CAP



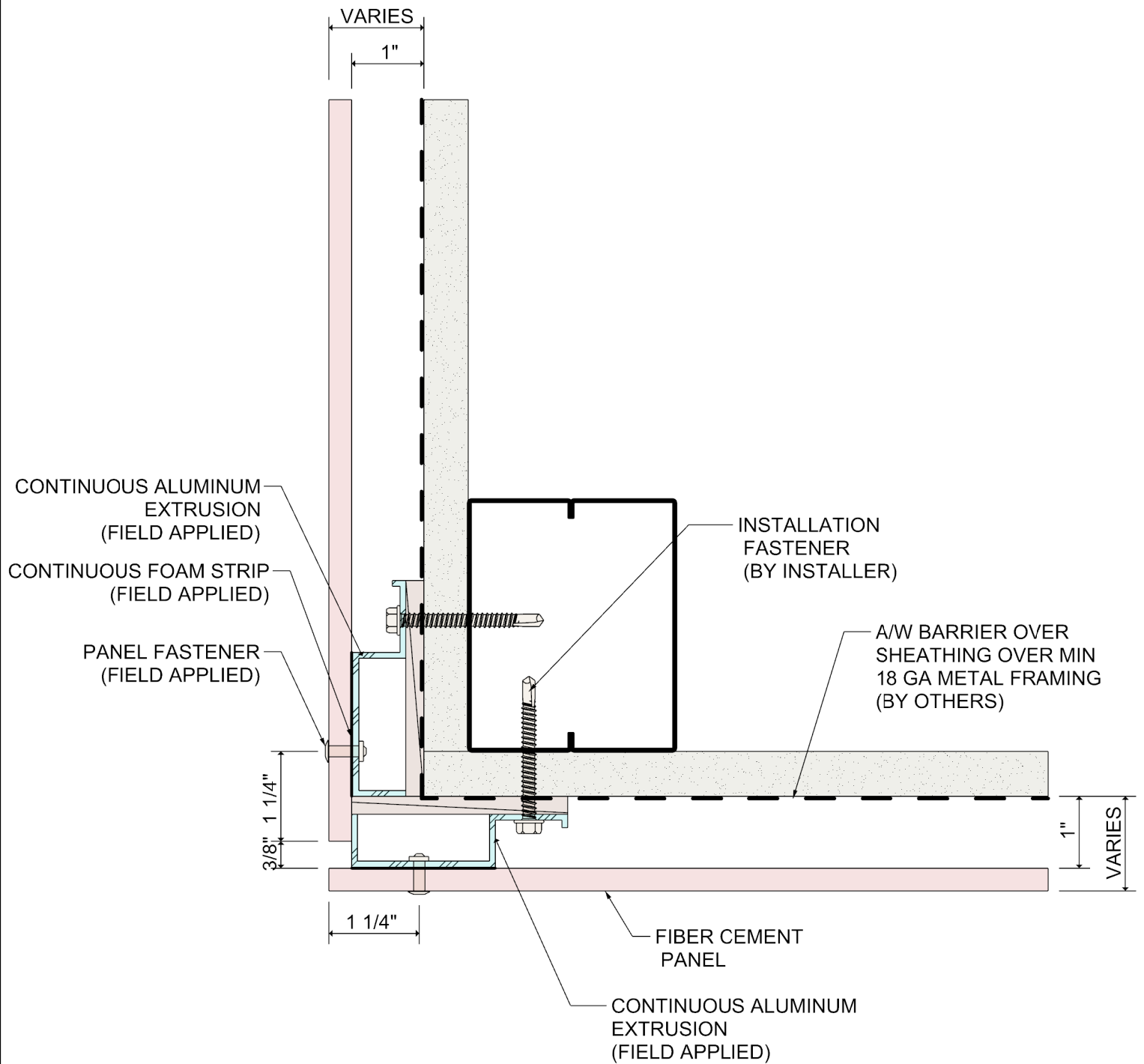
DETAIL:

12

SYSTEM 5100

FIBER CEMENT PANEL RAINSCREEN

INSIDE CORNER



DETAIL:

13

SYSTEM 5100

FIBER CEMENT PANEL RAINSCREEN

OUTSIDE CORNER