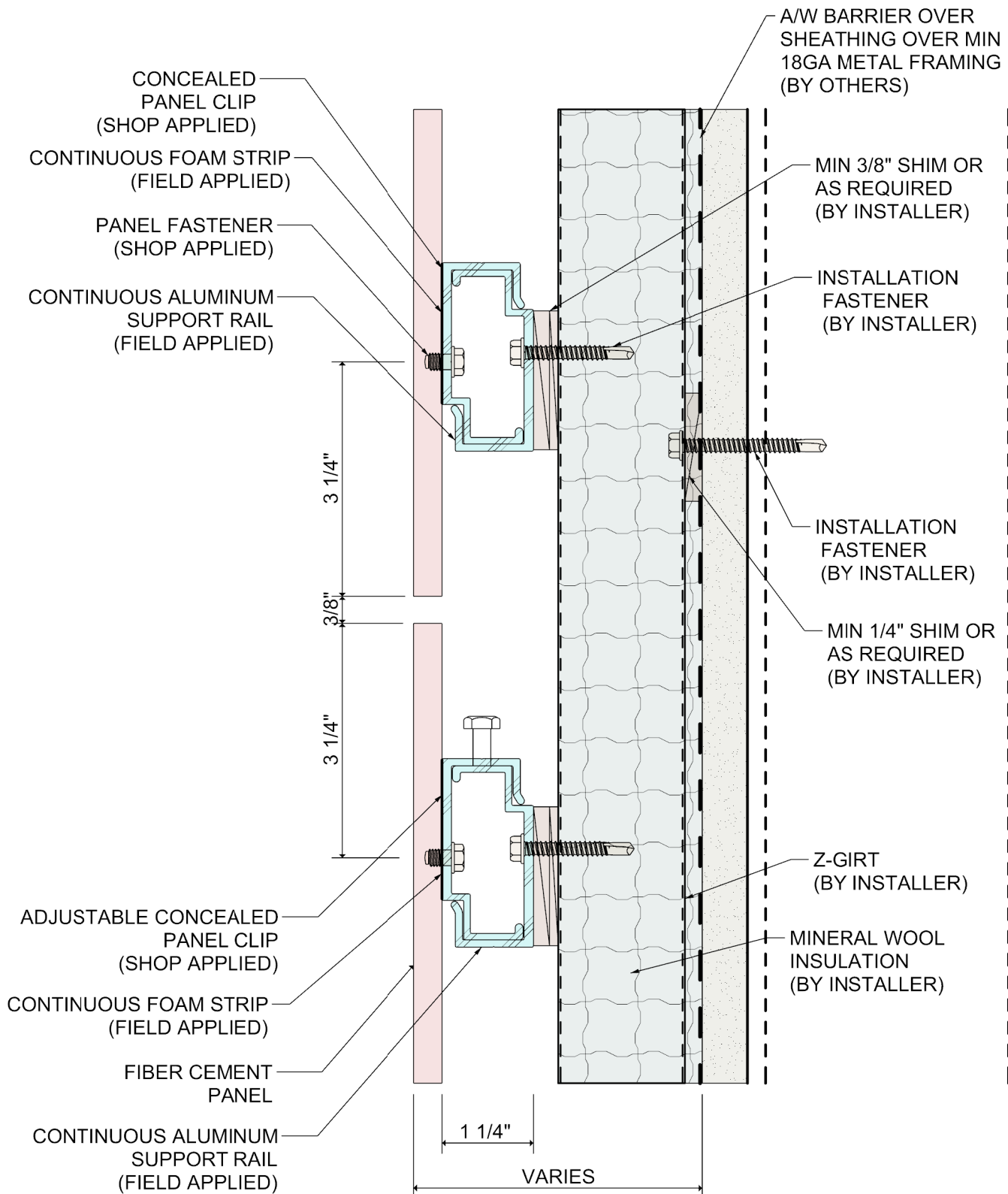


System 5200

Fiber Cement Panel Rainscreen Attachment System with Mineral Wool Insulation

Standard Details

Revised November, 2020



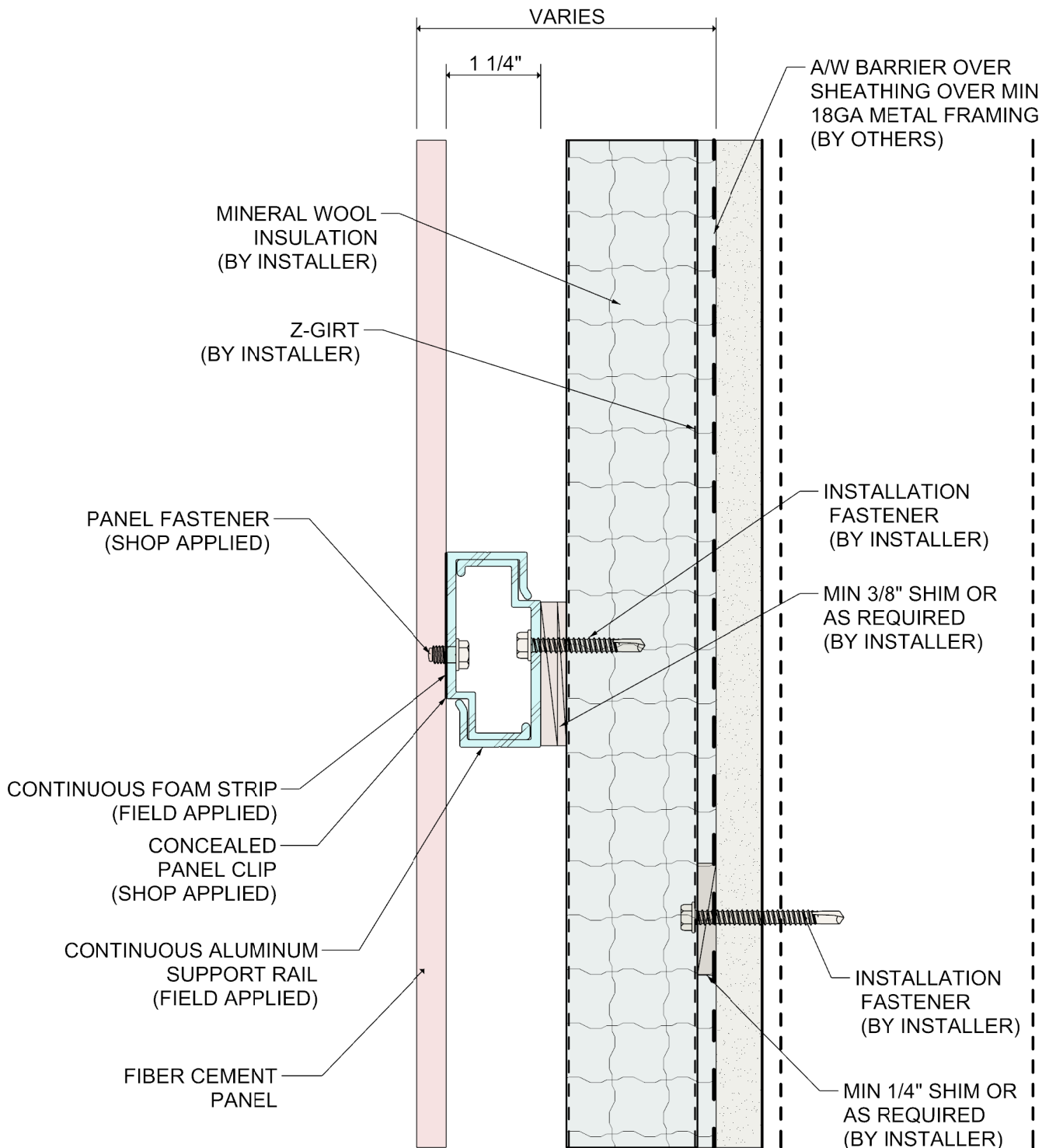
DETAIL:

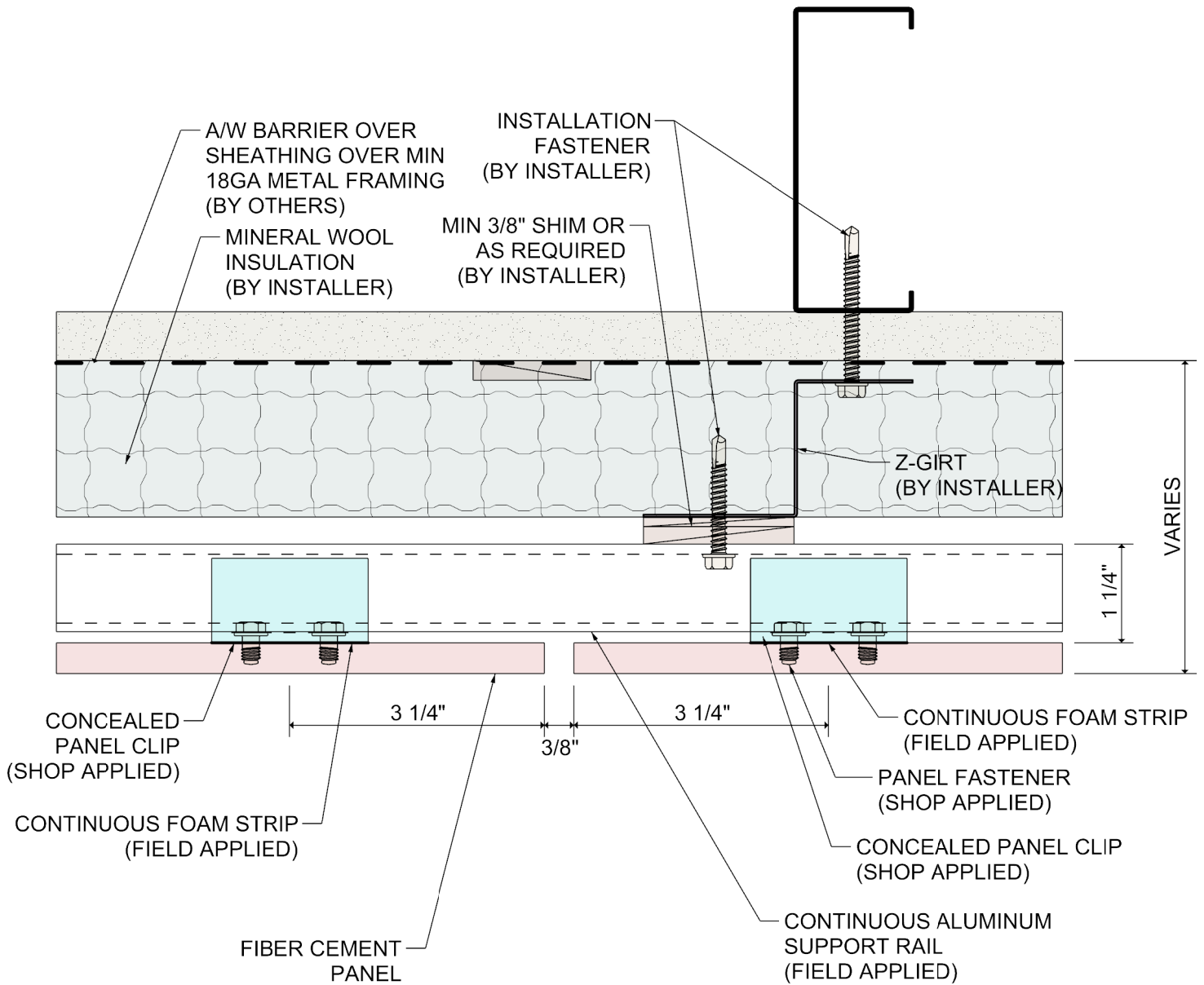
1

SYSTEM 5200

FIBER CEMENT PANEL RAINSCREEN

HORIZONTAL PANEL JOINT





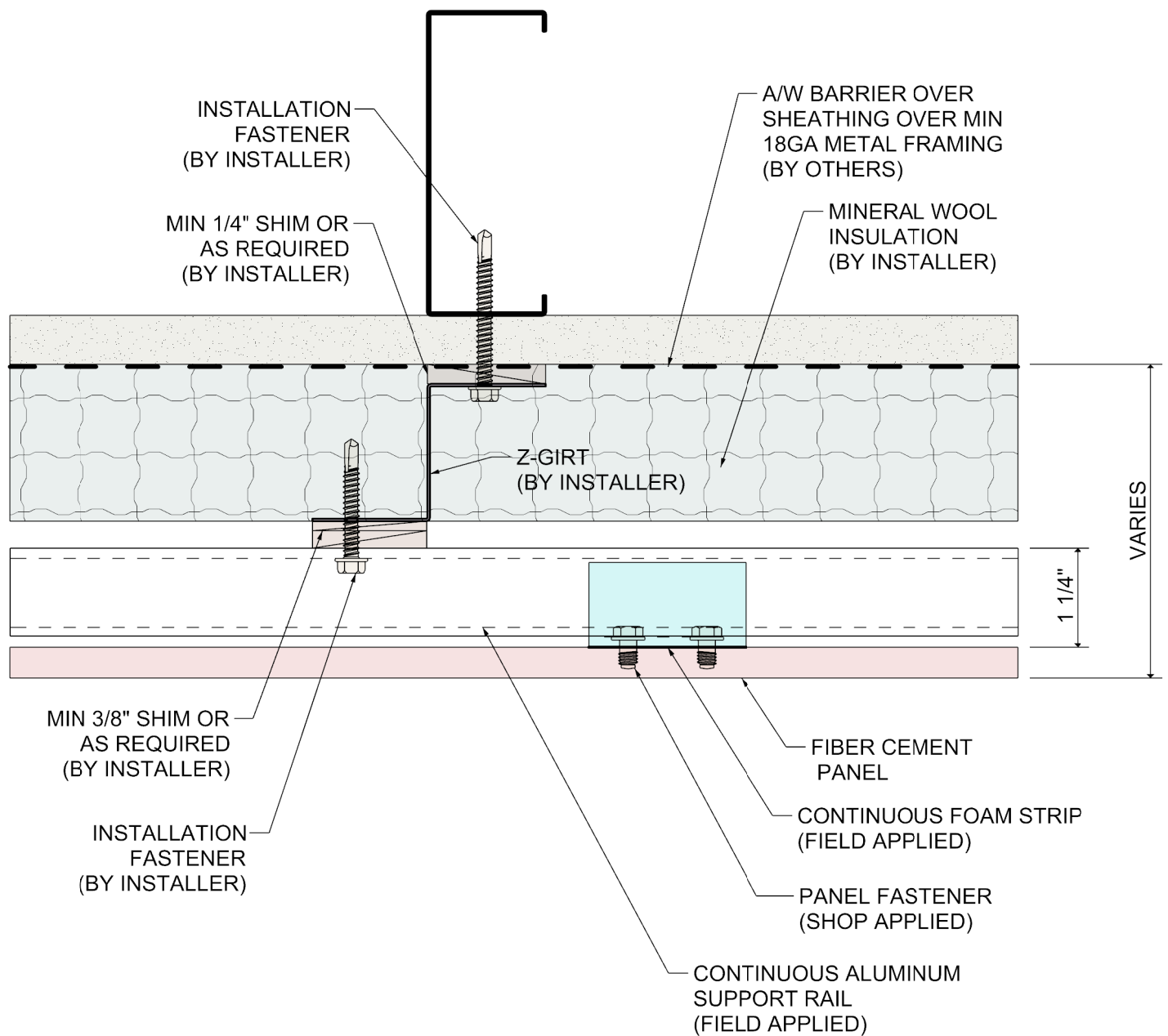
DETAIL:

3

SYSTEM 5200

FIBER CEMENT PANEL RAINSCREEN

VERTICAL PANEL JOINT



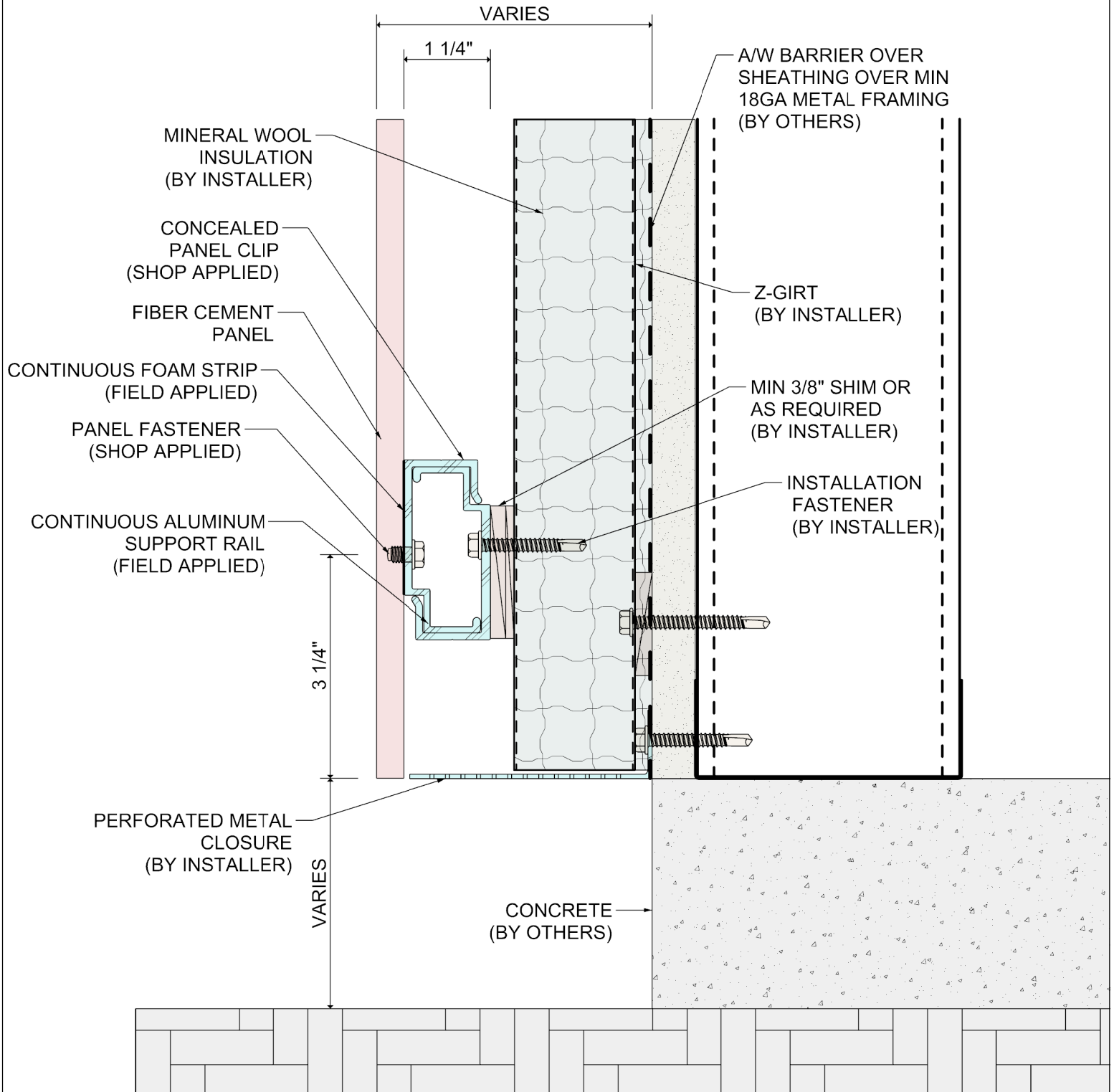
DETAIL:

4

SYSTEM 5200

FIBER CEMENT PANEL RAINSCREEN

VERTICAL MID PANEL DETAIL



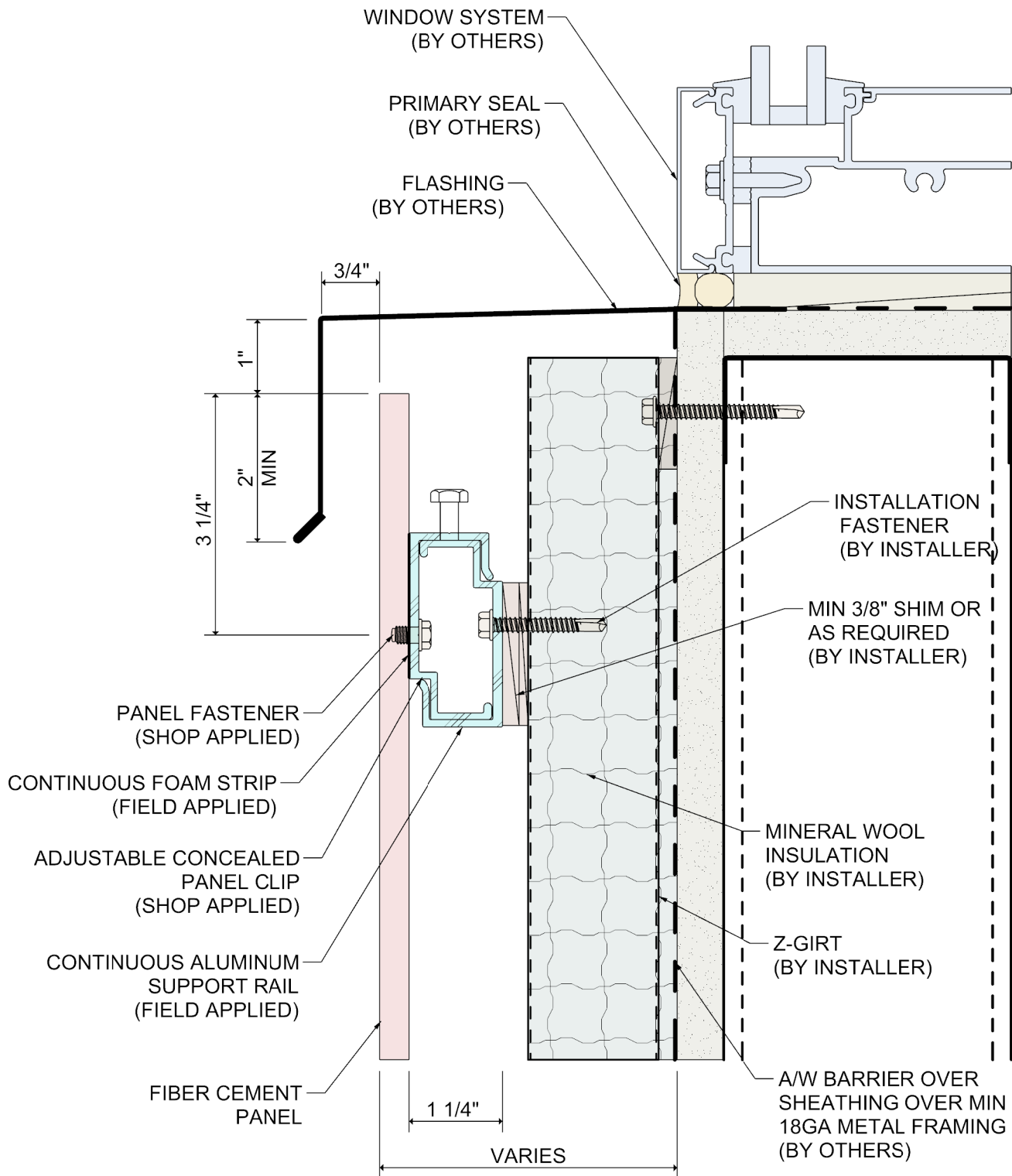
DETAIL:

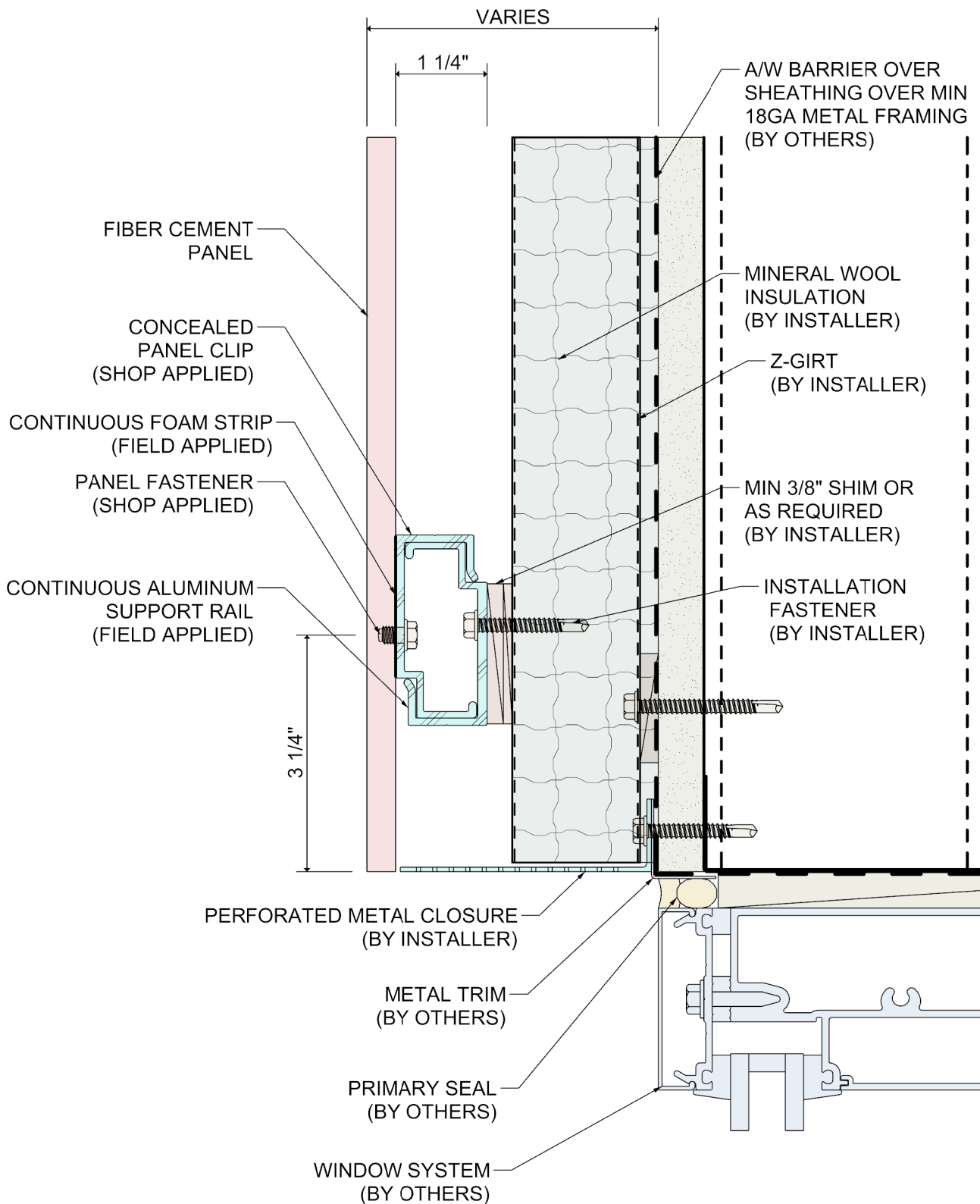
5

SYSTEM 5200

FIBER CEMENT PANEL RAINSCREEN

BASE OF WALL DETAIL





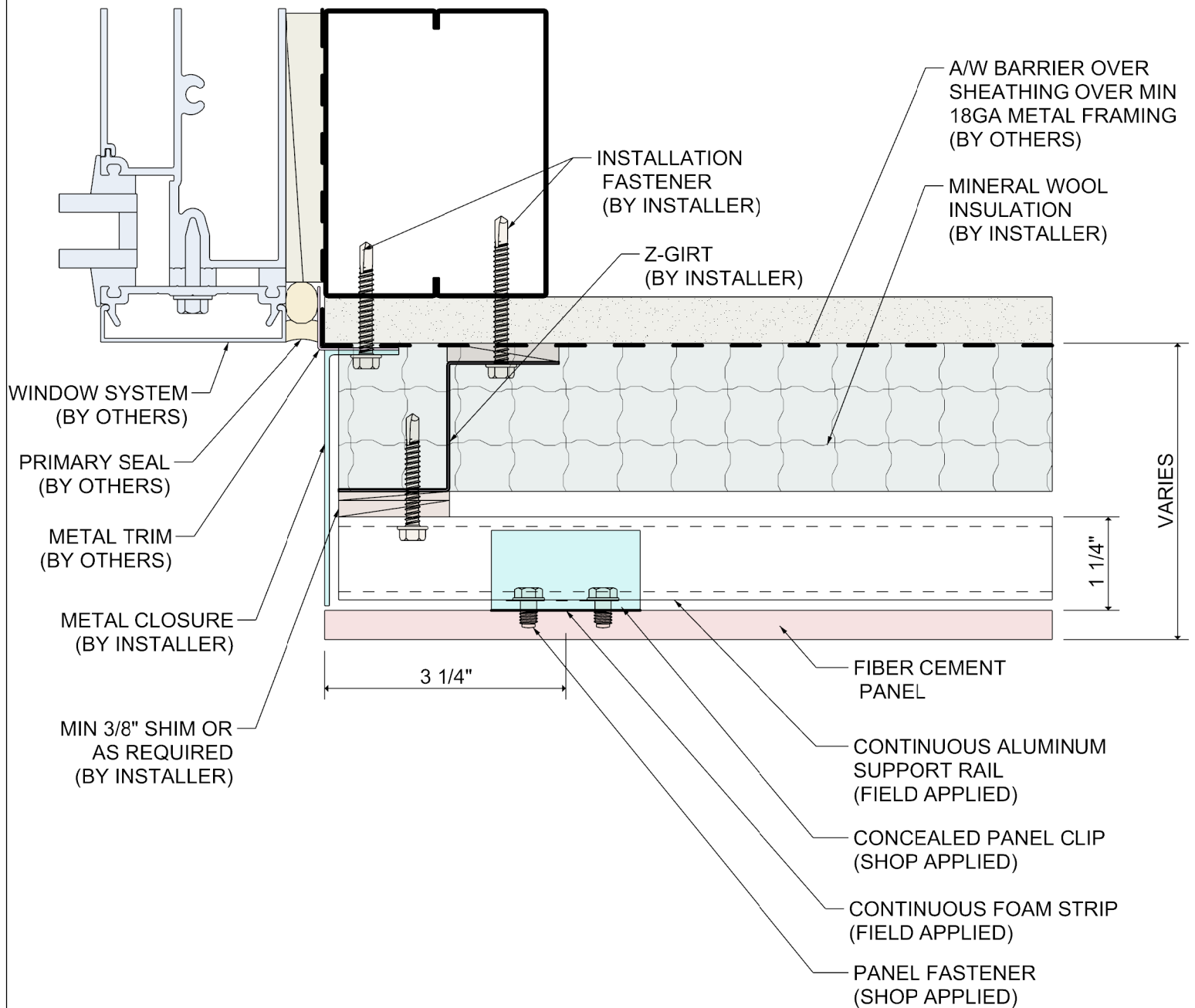
DETAIL:

7

SYSTEM 5200

FIBER CEMENT PANEL RAINSCREEN

WINDOW HEAD DETAIL



DETAIL:

8

SYSTEM 5200

FIBER CEMENT PANEL RAINSCREEN

TERMINATION AT WINDOW JAMB



VARIES

1 1/4"

A/W BARRIER OVER SHEATHING OVER MIN 18GA METAL FRAMING (BY OTHERS)

Z-GIRT (BY INSTALLER)

MINERAL WOOL INSULATION (BY INSTALLER)

MIN 3/8" SHIM OR AS REQUIRED (BY INSTALLER)

INSTALLATION FASTENER (BY INSTALLER)

FIBER CEMENT PANEL

CONCEALED PANEL CLIP (SHOP APPLIED)

CONTINUOUS FOAM STRIP (FIELD APPLIED)

PANEL FASTENER (SHOP APPLIED)

CONTINUOUS ALUMINUM SUPPORT RAIL (FIELD APPLIED)

3 1/4"

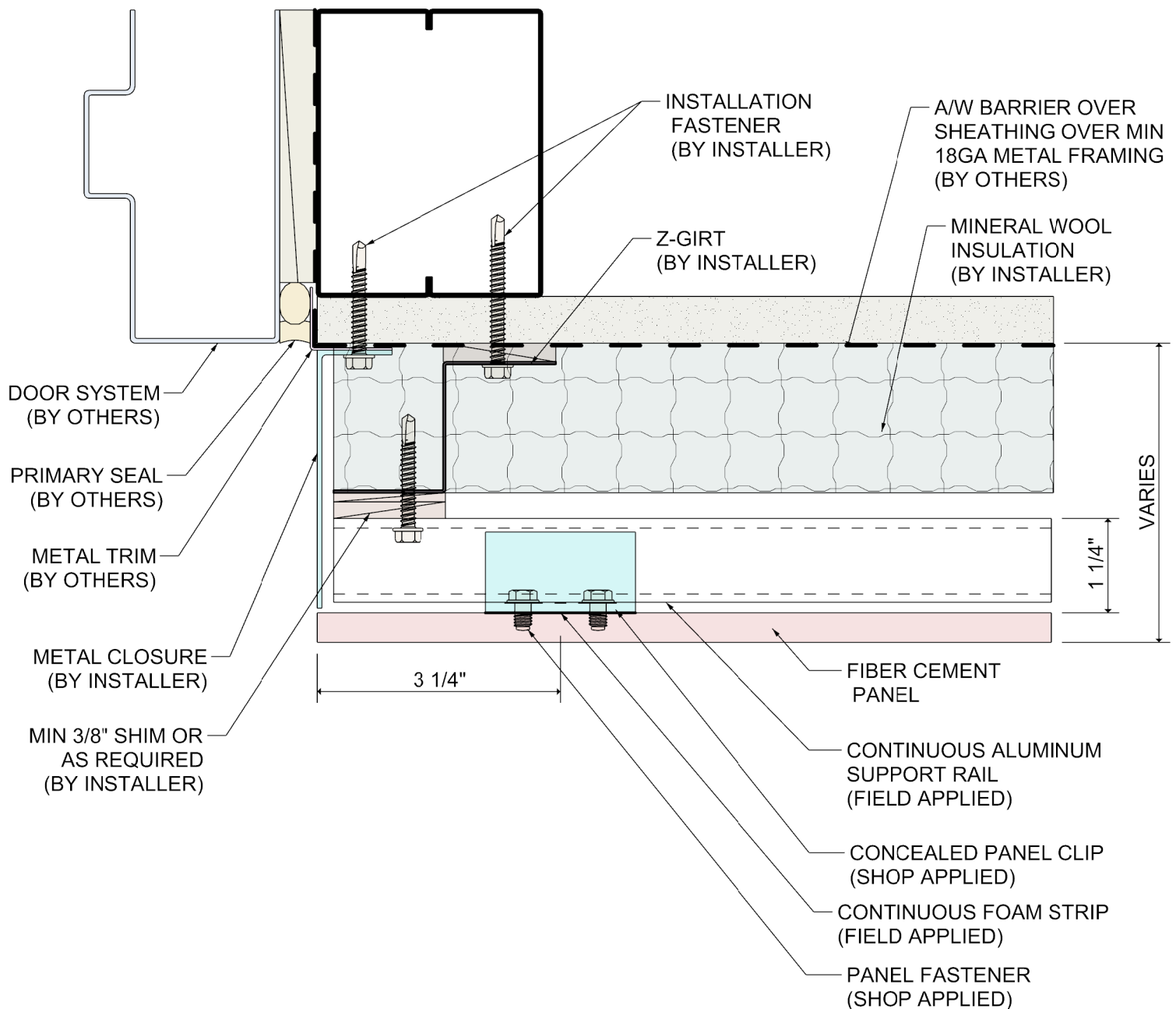
PERFORATED METAL CLOSURE (BY INSTALLER)

METAL TRIM (BY OTHERS)

PRIMARY SEAL (BY OTHERS)

DOOR SYSTEM (BY OTHERS)

DOOR HEAD DETAIL



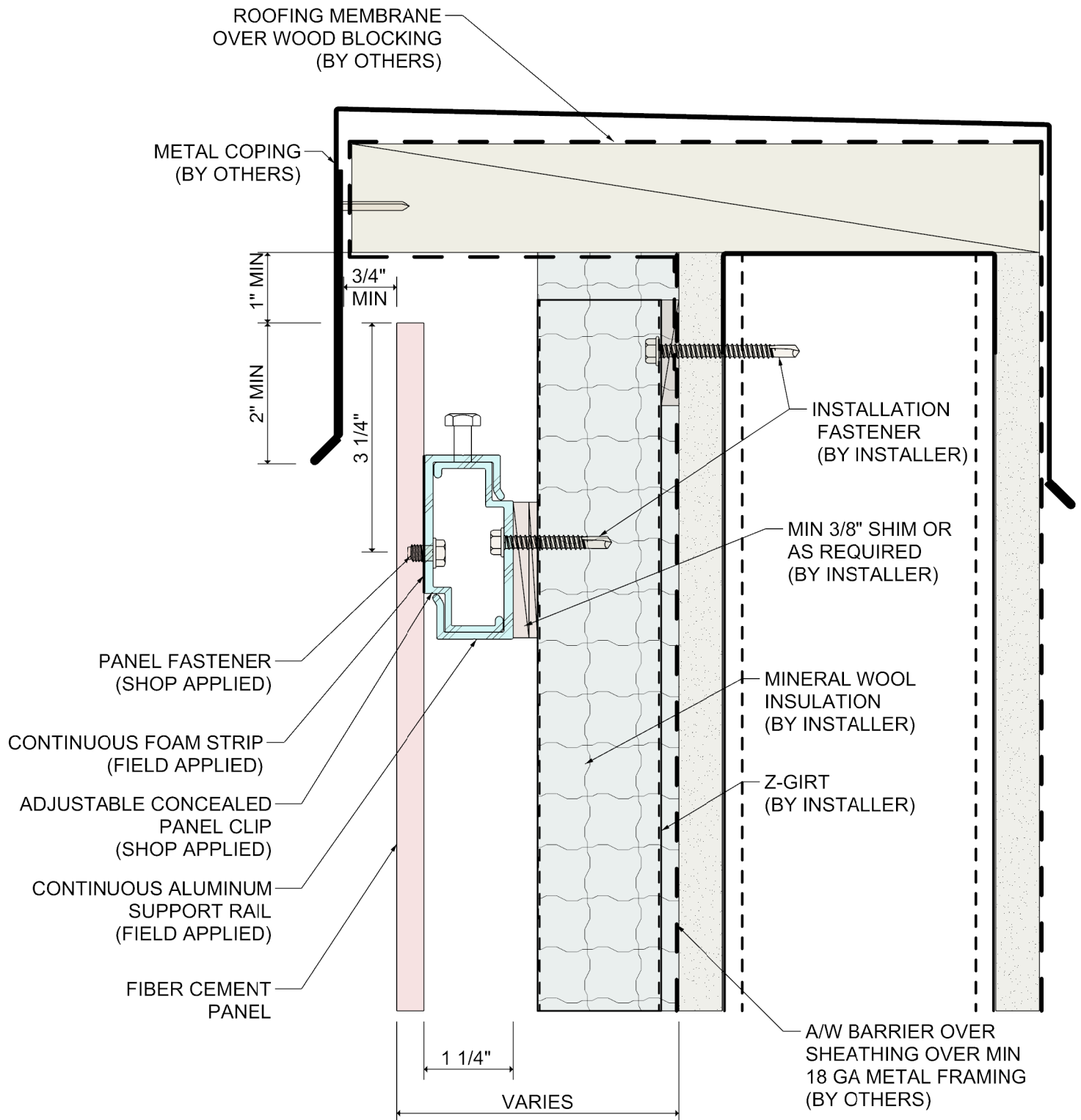
DETAIL:

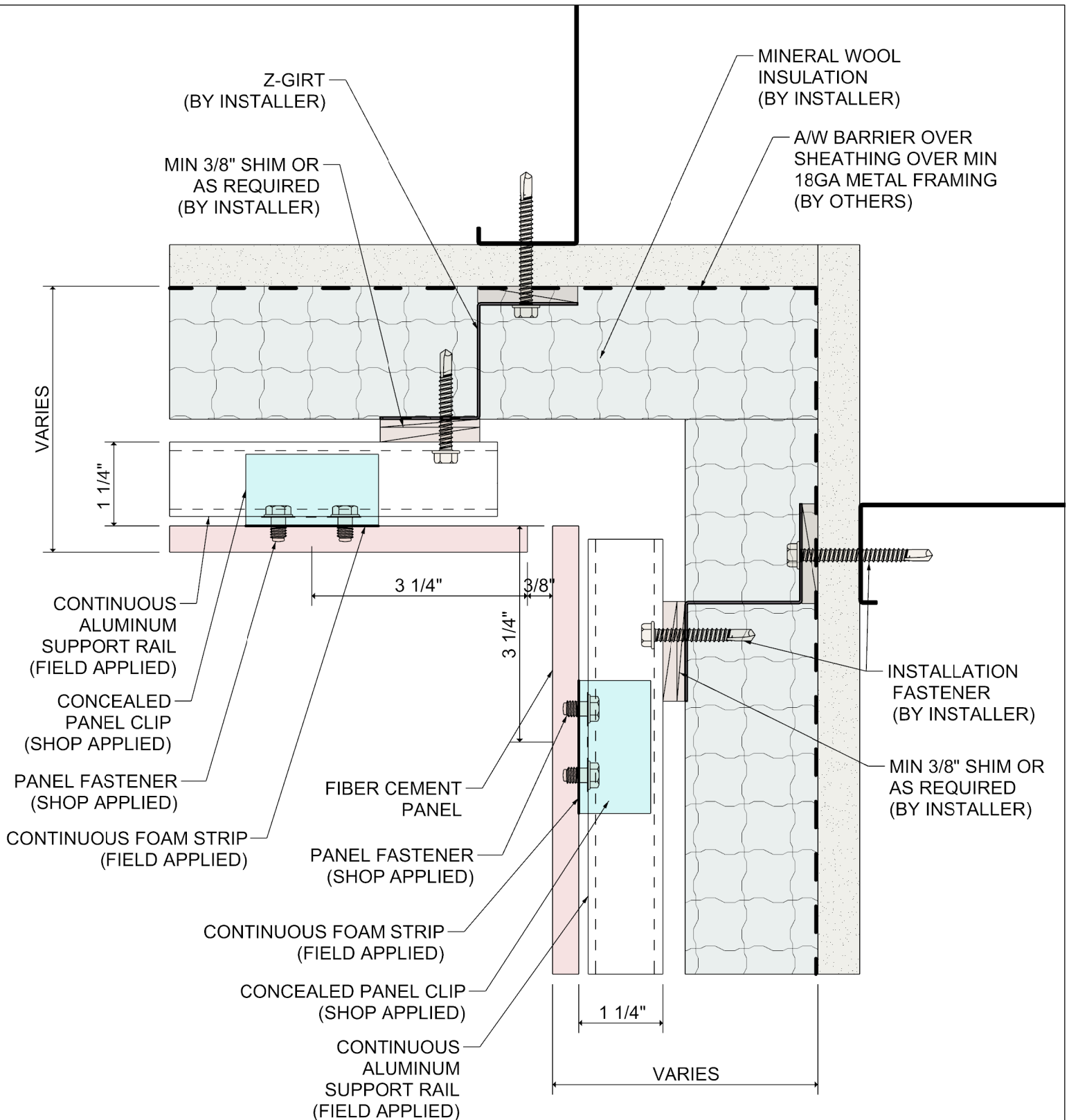
10

SYSTEM 5200

FIBER CEMENT PANEL RAINSCREEN

TERMINATION AT DOOR JAMB





DETAIL:

12

SYSTEM 5200

FIBER CEMENT PANEL RAINSCREEN

INSIDE CORNER

